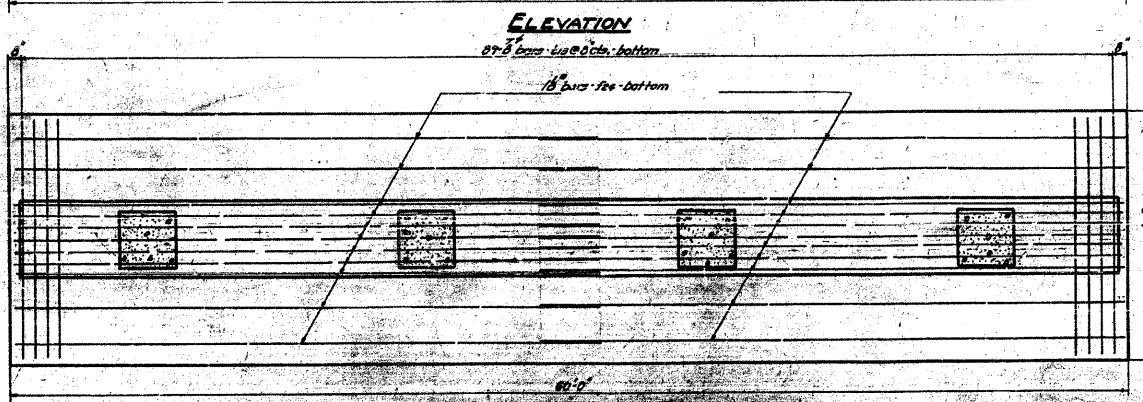
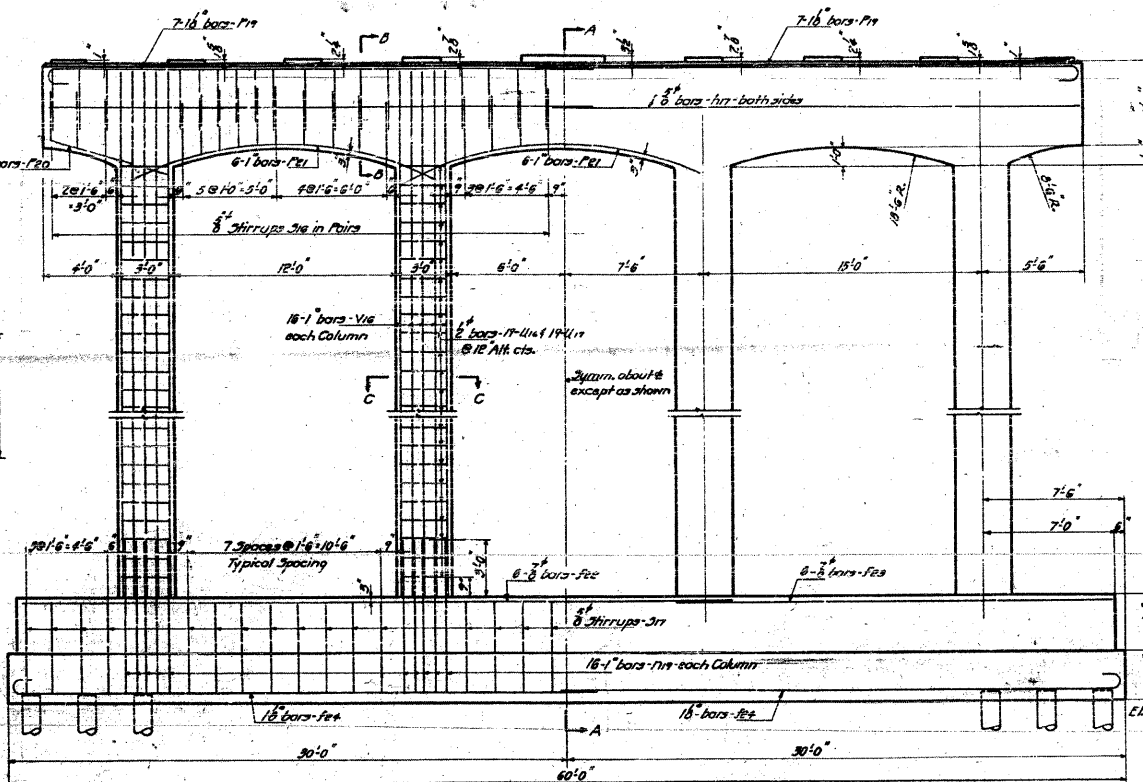
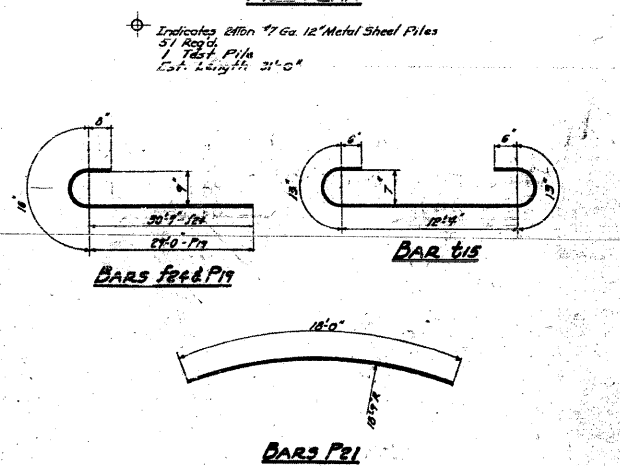
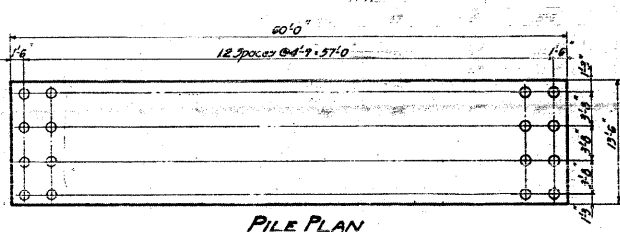
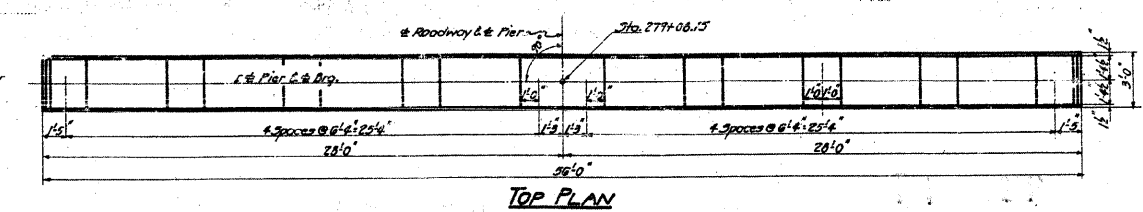
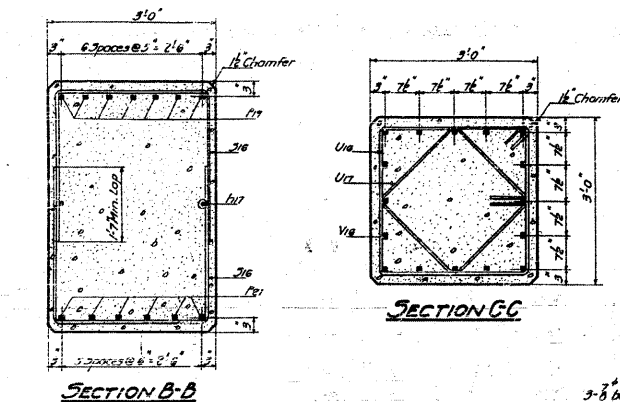


STATE OF ILLINOIS
DEPARTMENT OF PUBLIC WORKS & BUILDINGS
DIVISION OF HIGHWAYS

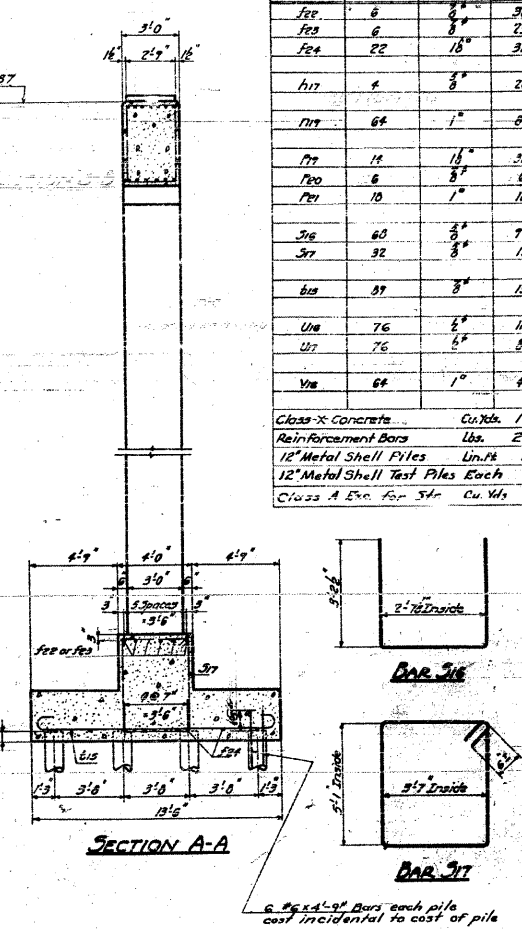
BOOK SHEET NO.	SECTION	COUNTY	TOTAL SHEETS	SHEET NO.	SHEET NO.
4	64-1VBR	ST. CLAIR	36	30	30 SHEETS
FED. ROAD DIST. NO. 1		ILLINOIS		FEB. 110 PROJECT	



BILL OF MATERIAL

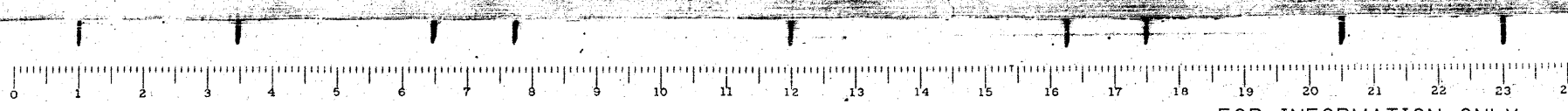
BAR NO.	NO.	SIZE	LENGTH
FE1	6	3"	38'-0"
FE2	6	3"	23'-0"
FE3	22	18"	38'-0"
FE4	4	3"	20'-6"
FE5	64	1"	8'-5"
FE6	14	18"	34'-0"
FE7	6	3"	6'-9"
FE8	10	1"	18'-0"
FE9	60	3"	7'-0"
FE10	32	3"	18'-6"
FE11	37	3"	15'-6"
FE12	76	6"	11'-6"
FE13	76	6"	8'-6"
FE14	64	1"	42'-6"

Class-X Concrete - Cu Yds 189.0
Reinforcement Bars - Lbs. 23,150
12" Metal Shell Piles - Lin. Ft. 1581
12" Metal Shell Test Piles Each 1
Class A Exc. for Str. - Cu Yds 270



COMPUTED	W.F. Uebay	EXAMINED	B-10 1954
CHECKED	W.F. Uebay	DESIGNED BY	W. E. Hanson
DRAWN	W.F. Uebay	PASSED	ENGINEER OF BRIDGE AND TRUSS STRUCTURE
CHECKED	W.F. Uebay	APPROVED	R.R. Kautsky
ASSEMBLED			
CHECKED			

PIERS
GRADE SEPARATION
MISSOURI PACIFIC R.R.
NORTH OF DUPE
E.A. COOMBE & BLOXDORF, INC.



FOR INFORMATION ONLY

CB Coombe-Bloxdorf P.C.
- CIVIL ENGINEERS -
- STRUCTURAL ENGINEERS -
- LAND SURVEYORS -
Design Firm License No. 184-002703