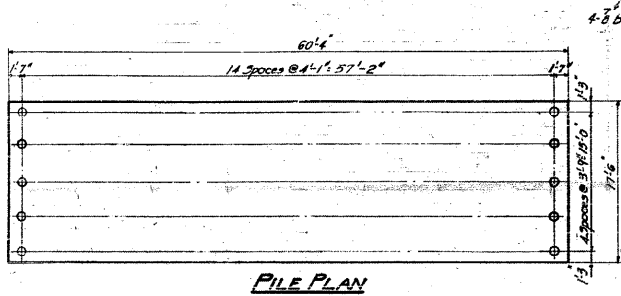
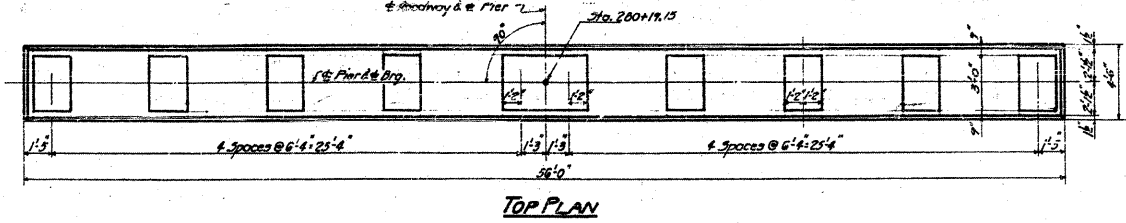
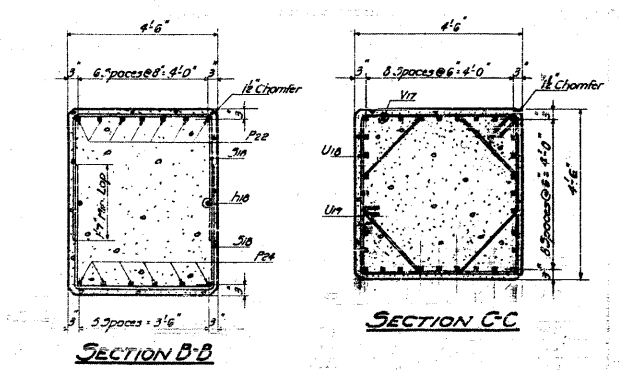


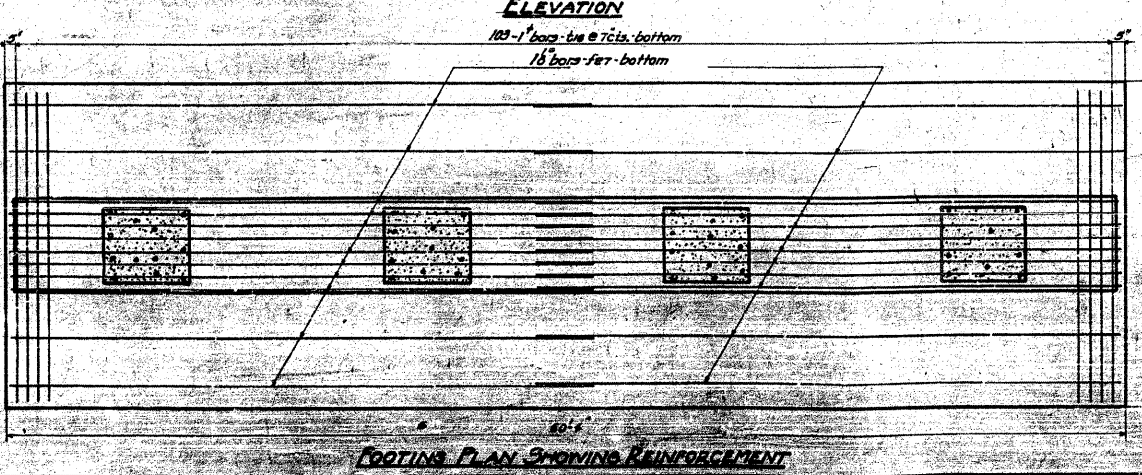
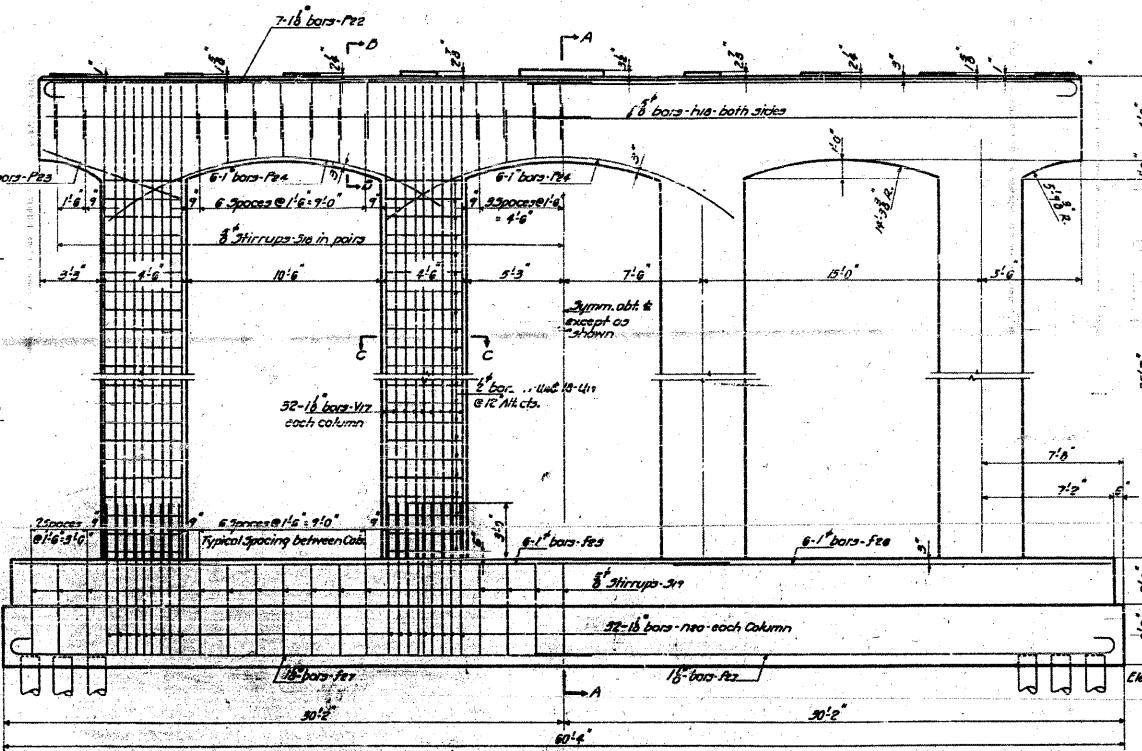
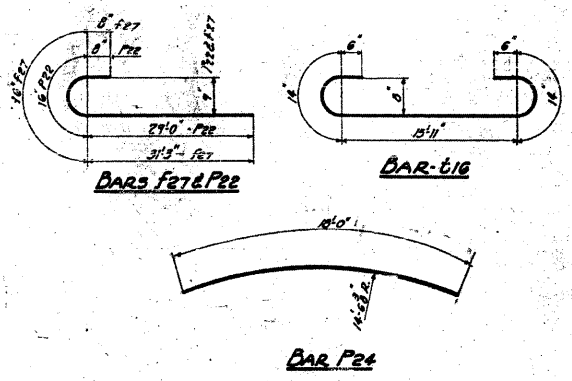
STATE OF ILLINOIS
DEPARTMENT OF PUBLIC WORKS & BUILDINGS
DIVISION OF HIGHWAYS

ROAD DIST. NO.	SECTION	COUNTY	TOTAL SHEETS	SHEET NO.
64-IVBR	64-IVBR	ST. CLAIR	259	125
FED. AID PROJECT				

SHEET NO. 25
30 SWELTS



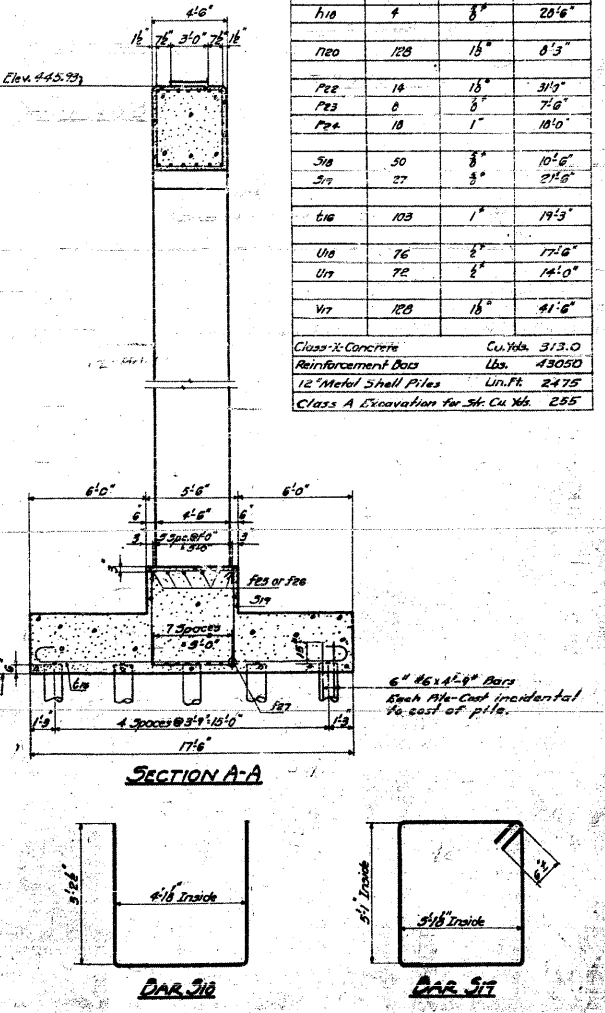
Indicates 25 Ton "10x12" Metal Shell Piles
75 Required
No Test Piles
25' Length = 33'-0"



BILL OF MATERIAL

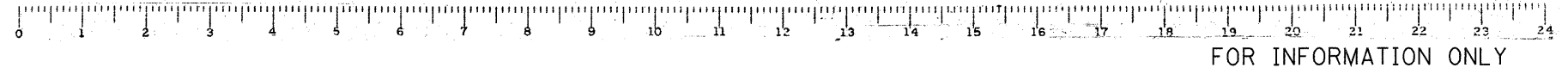
BAR NO.	NO.	SIZE	LENGTH
F25	6	1"	30'-0"
F26	6	1"	25'-6"
F27	24	1/2"	33'-0"
F10	4	3/8"	20'-6"
F20	120	1/2"	0'-3"
F22	14	1/2"	31'-0"
F23	8	3/8"	7'-0"
F24	18	1"	18'-0"
F30	50	3/8"	10'-6"
F37	27	3/8"	21'-6"
F16	103	1"	19'-3"
U10	76	3/8"	17'-0"
U17	72	3/8"	14'-0"
V17	120	1/2"	41'-6"

Class X Concrete Cu. Yds. 313.0
Reinforcement Bars Lbs. 43050
12" Metal Shell Piles Lin. Ft. 2475
Class A Excavation for St. Cl. Co. 255



COMPUTED	2/17/54	EXAMINED	8-10 1954
CHECKED	W. E. Hanson	DRAWN	W. E. Hanson
DRAWN	W. E. Hanson	CHECKED	W. E. Hanson
CHECKED	W. E. Hanson	APPROVED	R. B. Brantley
SPECIAL		ASSEMBLED	
CHECKED			

PIER 3
GRADE SEPARATION
MISSOURI PACIFIC R.R.
NORTH OF DUKE
E. A. RYAN & SONS
ST. CLAIR COUNTY



CB Coombe-Bloxdorf P.C.
- CIVIL ENGINEERS -
- STRUCTURAL ENGINEERS -
- LAND SURVEYORS -
Design Firm License No. 184-002703