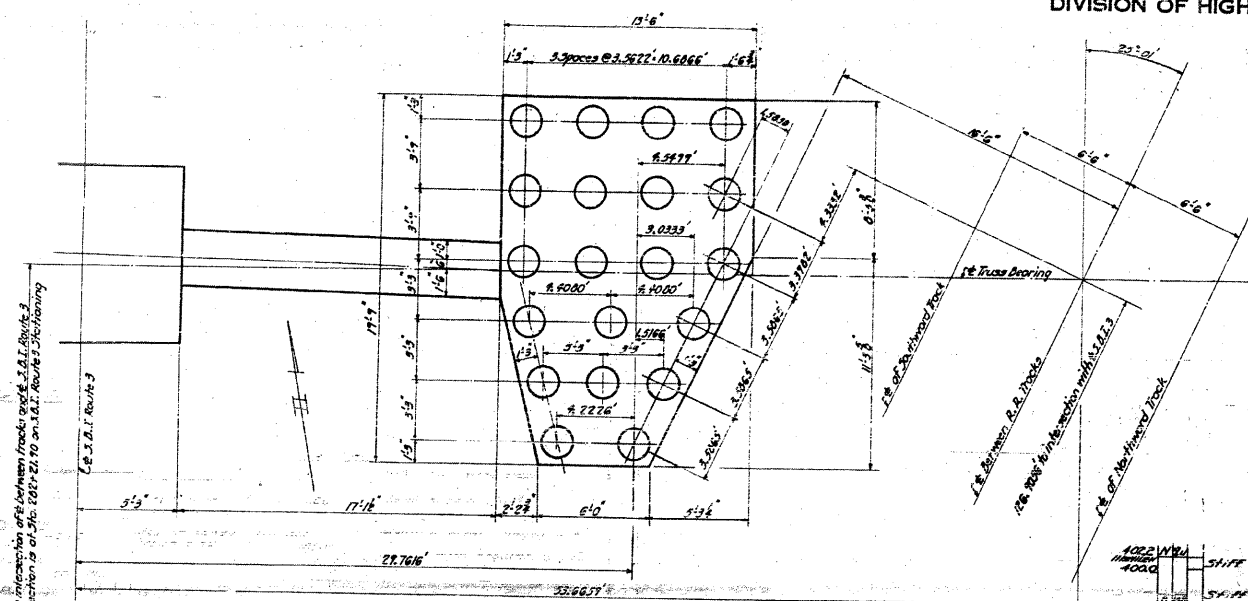


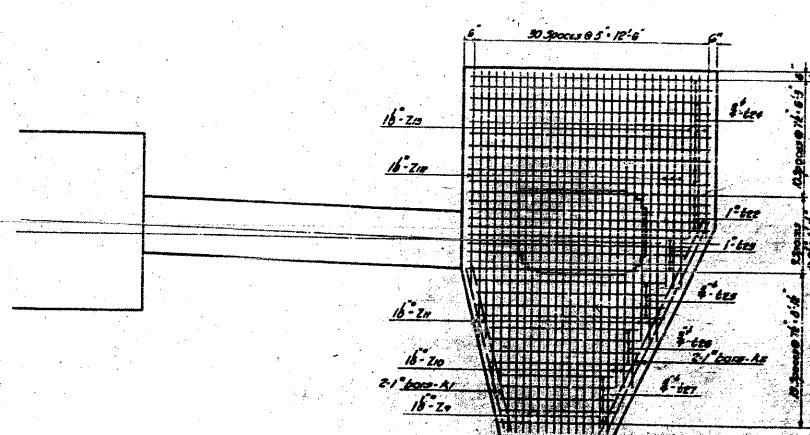
STATE OF ILLINOIS
DEPARTMENT OF PUBLIC WORKS & BUILDINGS
DIVISION OF HIGHWAYS

ROAD DISTRICT NO.	SECTION	COUNTY	SHEET NO.	SHEET NO.
4	64-IVB	ST. Clair	56	55
SHEET NO. 28				
30 SHEETS				



PLAN OF EAST FOOTING OF PIER 6 SHOWING LOCATION OF PILES

○ Indicates 33 Ton capacity #7 Ga. 14" metal Shell Piles - Est. Length = 50'-0"



PLAN OF EAST FOOTING OF PIER 6 SHOWING REINFORCEMENT IN BOTTOM

BORING DATA

Station	Depth (ft)	Soil Description	Station	Depth (ft)	Soil Description	Station	Depth (ft)	Soil Description
STA. 275+46	410.0	Stiff brown clay	STA. 281+06	410.0	Loose brown sandy silt	STA. 285+58	410.0	Stiff black silty clay
STA. 275+46	4050.2	Medium brown sandy silty clay	STA. 281+06	4050.2	Stiff yellow silty clay	STA. 285+58	4050.2	Hard brown clay
STA. 275+46	3950.0	Stiff mottled clay	STA. 281+06	3950.0	Loose brown silty sand	STA. 285+58	3950.0	Medium brown clayey silt
STA. 275+46	3900.0	Medium mottled clay	STA. 281+06	3900.0	Very stiff mottled gray and brown clay	STA. 285+58	3900.0	Loose brown angular very fine sand
STA. 275+46	3880.0	Very loose fine gray silty sand	STA. 281+06	3880.0	Stiff mottled gray and brown clay	STA. 285+58	3880.0	Medium brown angular very fine sand Occasional thin clay lenses
STA. 275+46	3800.0	Medium fine gray silty sand	STA. 281+06	3800.0	Medium mottled clay	STA. 285+58	3800.0	Medium gray uniform angular very fine sand Slightly silty
STA. 275+46	3750.0	Medium fine gray silty sand Occasional gravel lenses	STA. 281+06	3750.0	Very loose gray skeletal sandy silt	STA. 285+58	3750.0	Free Water El. 386.00
STA. 275+46	3700.0	Medium fine gray silty sand	STA. 281+06	3700.0	Dense very fine gray uniform sand	STA. 285+58	3700.0	Medium gray uniform angular very fine sand
STA. 275+46	3650.0	Medium fine gray silty sand	STA. 281+06	3650.0	Very dense very fine uniform gray sand	STA. 285+58	3650.0	Dense gray uniform angular sand Occasional small rounded pebbles
STA. 275+46	3600.0	Medium fine gray silty sand	STA. 281+06	3600.0	Medium well graded angular gray sand	STA. 285+58	3600.0	Medium gray clayey silt. Not organic, low compressibility
STA. 275+46	3550.0	Medium coarse angular gray sand	STA. 281+06	3550.0	Medium slightly clayey gray sand silt	STA. 285+58	3550.0	Medium gray silty very fine sand
STA. 275+46	3500.0	Medium coarse angular gray sand	STA. 281+06	3500.0	Dense very fine uniform gray sand	STA. 285+58	3500.0	Medium gray uniform angular coarse sand
STA. 275+46	3450.0	Very dense dark gray very fine sand	STA. 281+06	3450.0	Very fine uniform gray sand	STA. 285+58	3450.0	Dense fine gray sand
STA. 275+46	3410.0		STA. 281+06	3410.0		STA. 285+58	3410.0	

Note: Borings from logs made in 1954
N = No of Blows per Ft.
qu = Unconfined Compressive strength Tons per Sq. Ft.

BAR	SIZE	LENGTH	A	B	C	L
1#	1"	10'0"	8"	16"	8"	10'0"
2#	1"	10'0"	8"	16"	8"	10'0"
3#	1"	10'0"	8"	16"	8"	10'0"
4#	1"	10'0"	8"	16"	8"	10'0"
5#	1"	10'0"	8"	16"	8"	10'0"
6#	1"	10'0"	8"	16"	8"	10'0"
7#	1"	10'0"	8"	16"	8"	10'0"
8#	1"	10'0"	8"	16"	8"	10'0"
9#	1"	10'0"	8"	16"	8"	10'0"
10#	1"	10'0"	8"	16"	8"	10'0"

COMPUTED *W. J. Wilby*
CHECKED *W. J. Wilby*
DRAWN *W. J. Wilby*
CHECKED *W. J. Wilby*
ASSEMBLED
CHECKED

EXAMINED *W. E. Hanson*
PASSED
APPROVED *R. B. ...*



DETAIL PIER 6
GRADE SEPARATION
ILLINOIS DEPARTMENT OF PUBLIC WORKS & BUILDINGS
DIVISION OF HIGHWAYS
C.A. ROBERTSON

CB Coombe-Bloxdorf P.C.
- CIVIL ENGINEERS -
- STRUCTURAL ENGINEERS -
- LAND SURVEYORS -
Design Firm License No. 184-002703