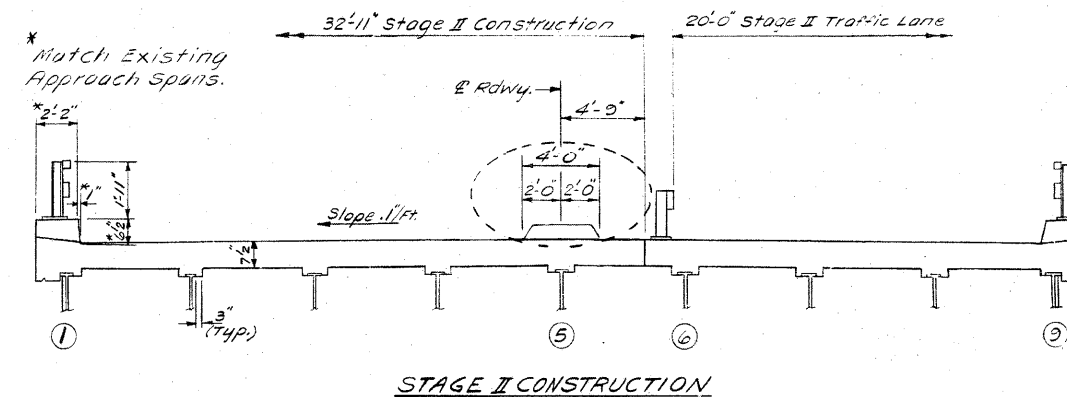
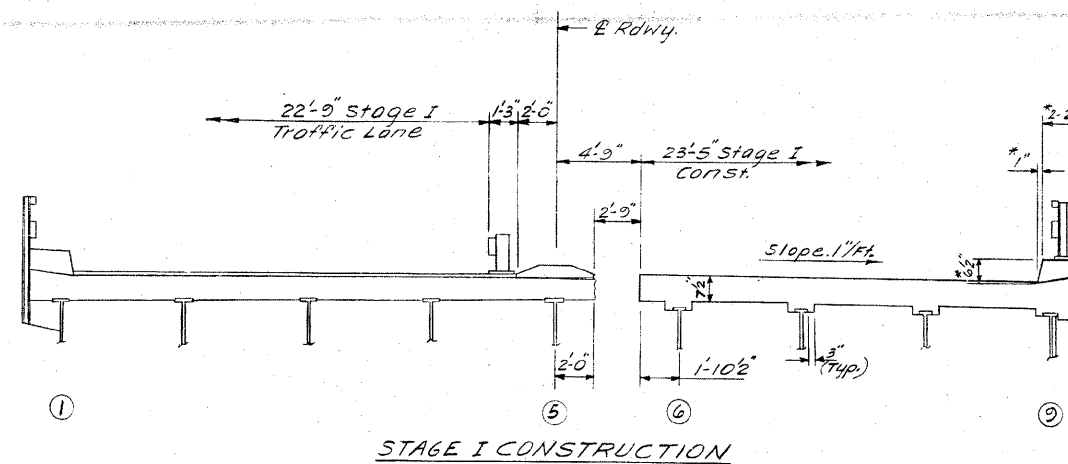
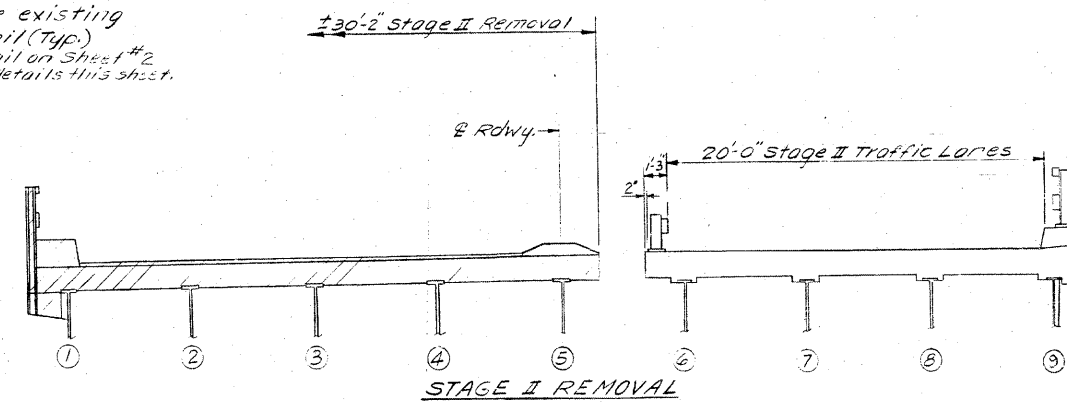
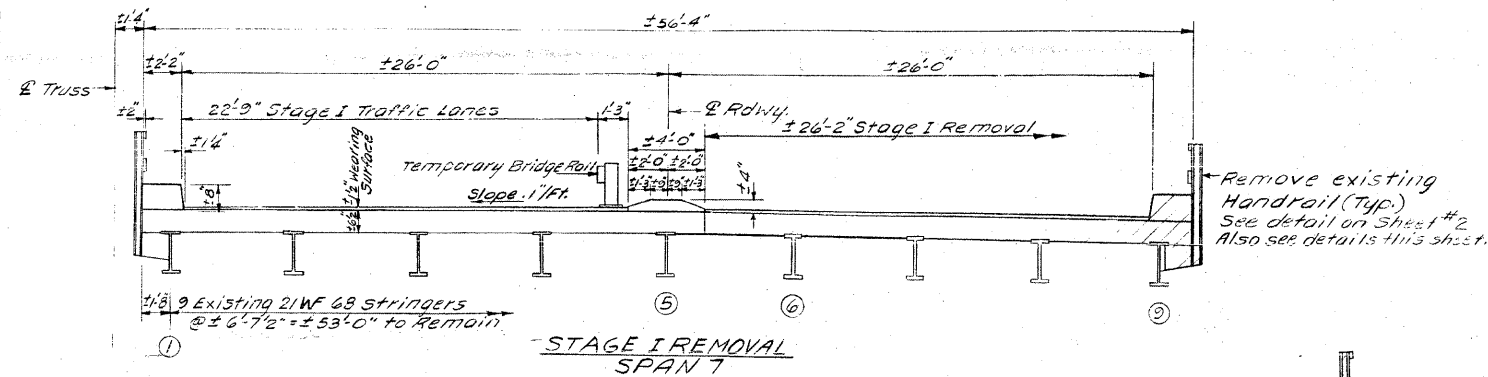


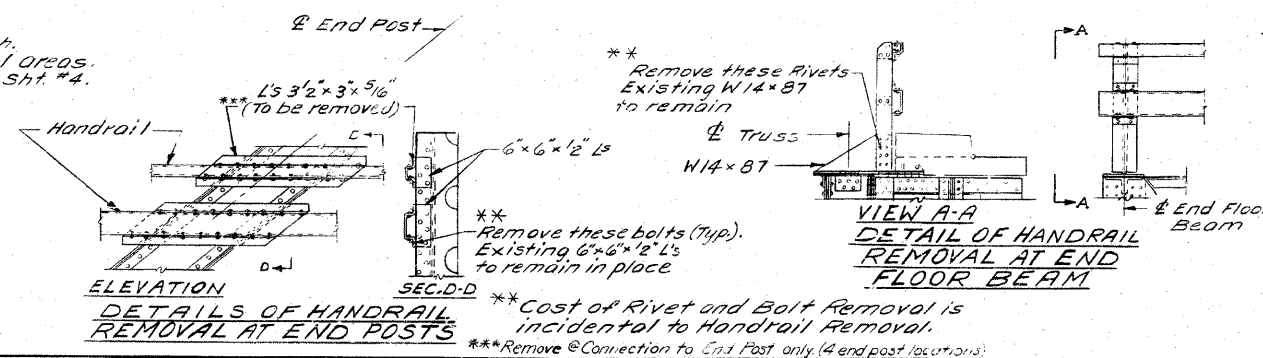
STATE OF ILLINOIS
DEPARTMENT OF TRANSPORTATION

ROUTE NO.	SECTION	COUNTY	TOTAL SHEETS	SHEET NO.
14	64-IVBR	ST. CLAIR	23	7a
SHEET NO. 30 18 SHEETS				

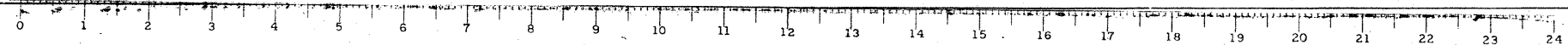


All cross sections are looking South.
Hatched Portions indicate Removal Areas.
For Temporary Bridge Rail details, see Sht. #4.

DESIGNED	Feb. 4 1985
CHECKED	
DRAWN	
CHECKED	



STAGE CONSTRUCTION DETAILS
SPAN 7
FA. RTE. 14 SEC. 64-IVB1
ST. CLAIR COUNTY
STA. 281 + 07.13
AS REVISED 2-28-86 D.E.A.



FOR INFORMATION ONLY

FILE NAME =	USER NAME = CFC...	DESIGNED -	REVISED -	STATE OF ILLINOIS DEPARTMENT OF TRANSPORTATION	SN 082-0030 PLANS (REHABILITATION PLANS)	SCALE:	SHEET NO. OF SHEETS STA. TO STA.	F.A.P. RTE.	SECTION	COUNTY	TOTAL SHEETS	SHEET NO.
...136-0876882-exist-bridge-repair-plans-06.dgn	PLOT SCALE = 40,000,000 / IN.	DRAWN -	REVISED -					312	64-IVBR	ST. CLAIR	259	136
CB JOB NO 09021	PLOT DATE = 8/5/2010	CHECKED -	REVISED -					CONTRACT NO. 76882				
		DATE - / /	REVISED -					ILLINOIS FED. AID PROJECT				

CB Coombe-Bloxdorf P.C.
- CIVIL ENGINEERS -
- STRUCTURAL ENGINEERS -
- LAND SURVEYORS -
Design Firm License No. 184-002703