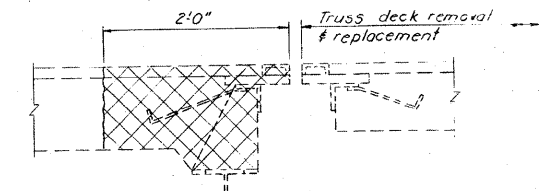
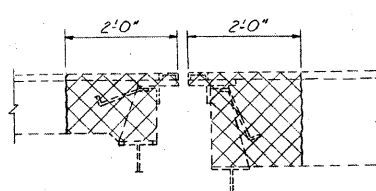
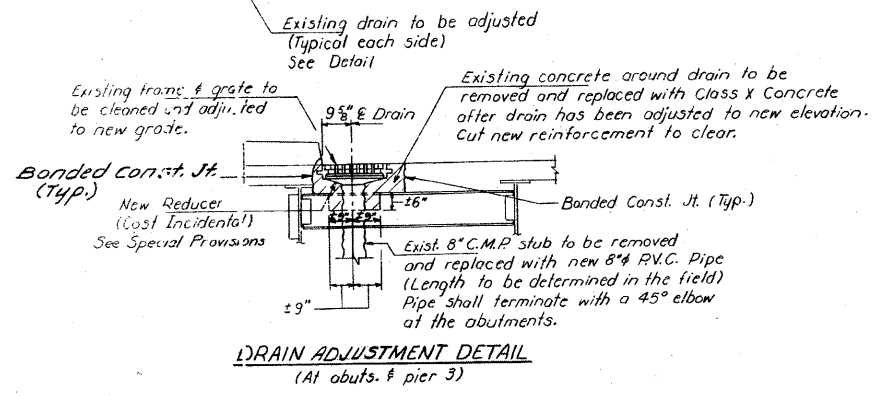
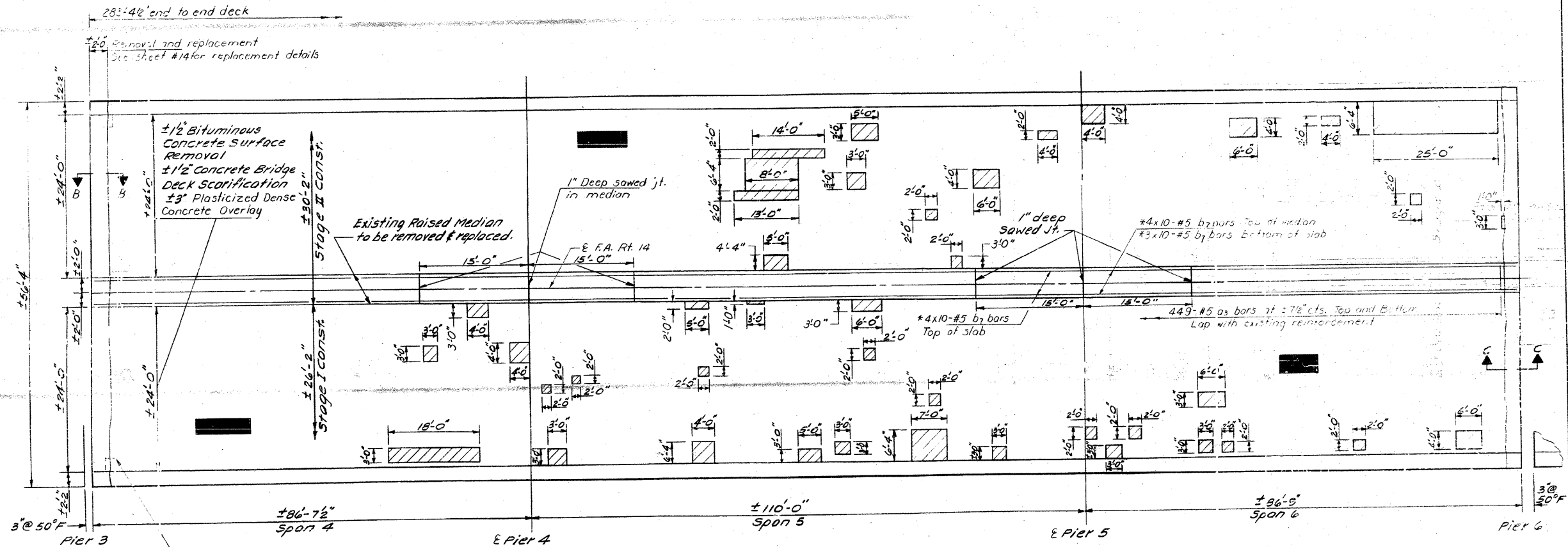


STATE OF ILLINOIS
DEPARTMENT OF TRANSPORTATION

ROUTE NO.	SECTION	COUNTY	TOTAL SHEETS	SHEET NO.	SHEET NO. / TOTAL SHEETS
114	64-1VBR	ST. CLAIR	23	14	13 SHEETS
DESIGNED BY	DRAWN BY	CHECKED BY	DATE	PROJECT	



Note: Removal of existing expansion devices above the diaphragms is incidental to "Concrete Removal."

* For placement see median replacement details on sheet #14.

For notes see sheet #9.

DECK REPAIR DETAILS
SPANS 4, 5 & 6
E.A. RTE. 14 SEC. 64-1VBR
ST. CLAIR COUNTY
STA. 218+07.13

DESIGNED: *James F. Blawie*
CHECKED: *David G. Goff*
DRAWN: LH
CHECKED: DG

EXAMINED: *James F. Blawie*
APPROVED: *James F. Blawie*

Feb. 4 1985

FOR INFORMATION ONLY

CB Coombe-Bloxdorf P.C.
- CIVIL ENGINEERS -
- STRUCTURAL ENGINEERS -
- LAND SURVEYORS -
Design Firm License No. 184-002703

FILE NAME =	USER NAME = CFC...	DESIGNED -	REVISED -	STATE OF ILLINOIS DEPARTMENT OF TRANSPORTATION	SN 082-0030 PLANS (REHABILITATION PLANS)	SCALE:	SHEET NO. OF SHEETS STA. TO STA.	F.A.P. RTE.	SECTION	COUNTY	TOTAL SHEETS	SHEET NO.
...145-0876882-exist-bridge-repair-plans	S.dgn	DRAWN -	REVISED -					312	64-1VBR	ST. CLAIR	259	145
PLOT SCALE = 40,000,000 / 1 IN.		CHECKED -	REVISED -					CONTRACT NO. 76882				
PLOT DATE = 8/5/2010		DATE - / /	REVISED -					ILLINOIS FED. AID PROJECT				