

STATE OF ILLINOIS
DEPARTMENT OF TRANSPORTATION

ROUTE NO.	SECTION	COUNTY	TOTAL SHEETS	SHEET NO.
114	64-IVBR	ST. CLAIR	23	17a
SHEET NO. 130 18 SHEETS				

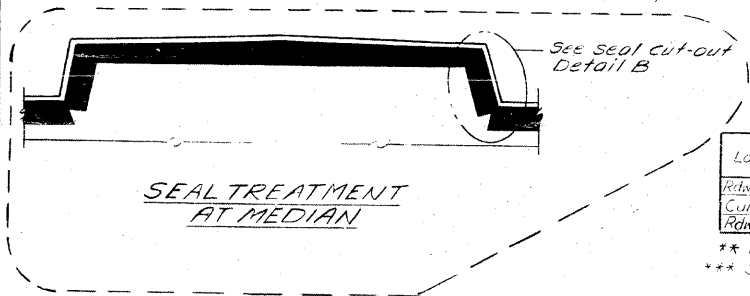
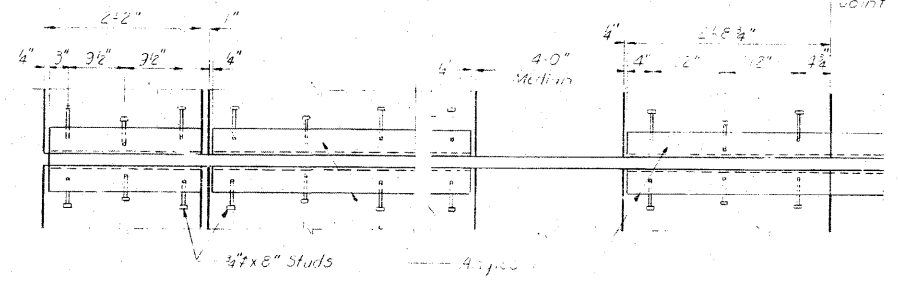
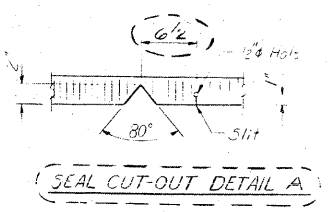
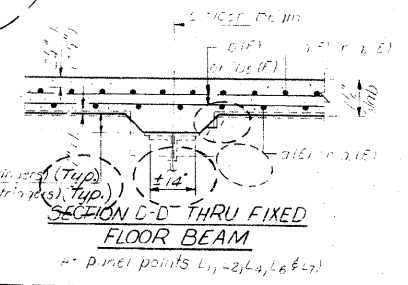
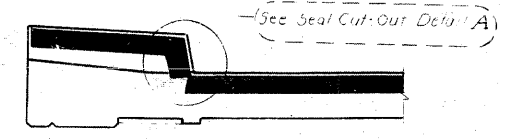
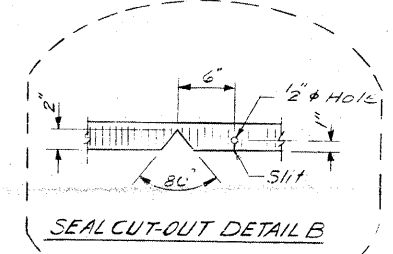
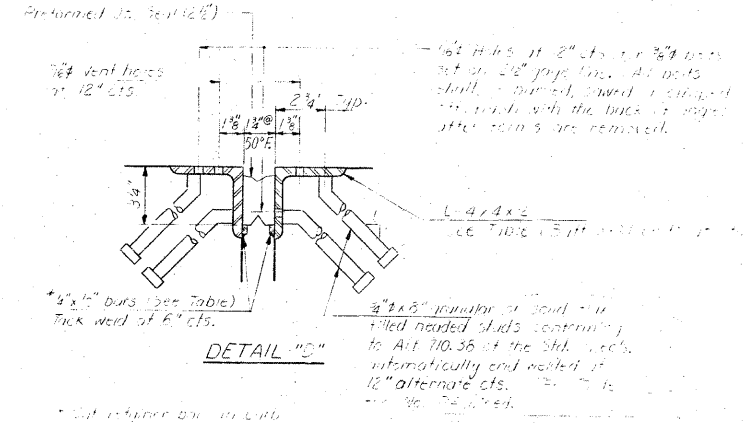
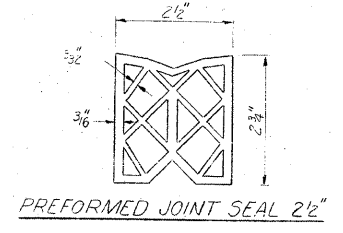
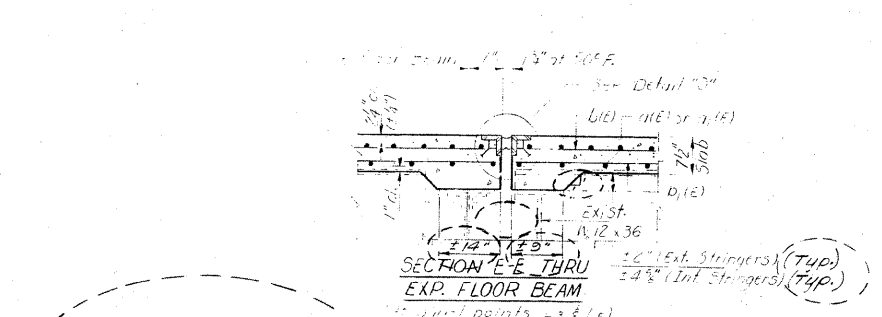
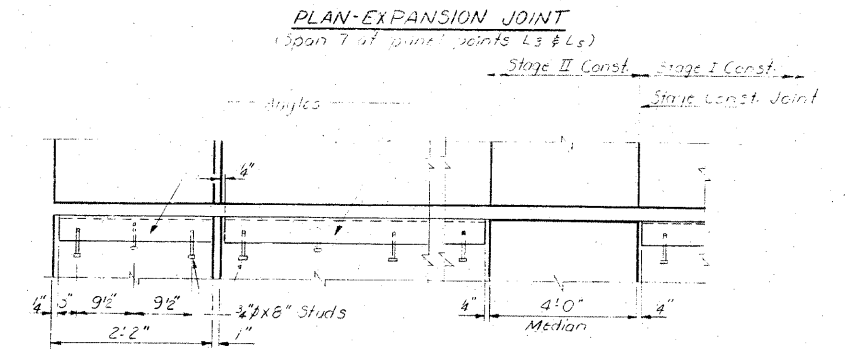


TABLE OF ANGLE AND BAR LENGTHS & NO. STUDS

Location	Angle	Bars	No. Studs	Stage II (No. Bd. Lanes)	
				Angle	No. Studs
Rdwy. (Sp. 11)	23°10'	48	48	23°10'	48
Curbs	**21°13'	18	**17	**21°13'	18
Rdwy. (Span 7)	21°13'	84	23°10'	23°10'	96

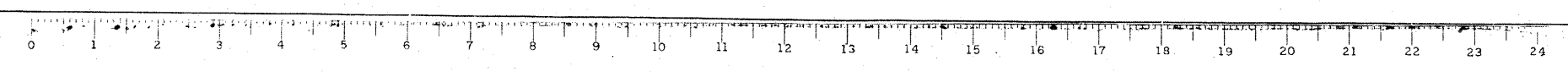
** Typical All
*** Span 7 Only.



DESIGNED *[Signature]*
CHECKED *[Signature]*
DRAWN *[Signature]*
CHECKED *[Signature]*

EXAMINED *[Signature]*
PASSED *[Signature]*
APPROVED *[Signature]*
DIRECTOR OF HIGHWAYS

Feb. 4 1981



FOR INFORMATION ONLY

SUPERSTRUCTURE DETAILS
E.A. RT. 14 SEC. 64-IVB1
ST. CLAIR COUNTY
STA. 281+07.13

FILE NAME = ...152-0876882-exist-bridge-repair-plans-22.dgn	USER NAME = CFC...	DESIGNED -	REVISED -	STATE OF ILLINOIS DEPARTMENT OF TRANSPORTATION	SN 082-0030 PLANS (REHABILITATION PLANS)	F.A.P. RTE. 312	SECTION 64-IVBR	COUNTY ST. CLAIR	TOTAL SHEETS 259	SHEET NO. 152		
PLOT SCALE = 40.000000' / 1" IN.	PLOT DATE = 8/5/2010	DRAWN -	REVISED -			SCALE:	SHEET NO. OF SHEETS	STA. TO STA.	ILLINOIS FED. AID PROJECT			
CB JOB NO 09021		CHECKED -	REVISED -									
		DATE - / /	REVISED -									

CB Coombe-Bloxdorf P.C.
- CIVIL ENGINEERS -
- STRUCTURAL ENGINEERS -
- LAND SURVEYORS -
Design Firm License No. 184-002703