

DATE	NO.	BY	REVISED	DATE	BY	SHEET NO.	OF SHEETS
11-14	14	WINST. CLAIR	23	19		15	18

Joint Size	"C" at 50°F	"D" at 50°F
2"	2"	1 1/2" Min.
2 1/2"	2 1/2"	2 1/2" Min.
4"	3"	1 1/2" Min.

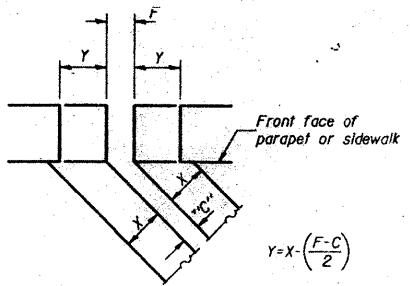
**INSTALLATION NOTES**

1. Install sponge mandrels in positions shown to form flap convolution.
2. Install parapet or sidewalk piece (trim roadway flap to fit before applying epoxy).
3. Install continuous seal in roadway.
4. Install anchor blocks as indicated.

NOTE A: Maximum spacing of anchor bolts shall be 12" centers.

**SKEW LIMITATIONS**

The details of the anchor blocks and the elastomeric membrane in the parapet, as shown, are for up to 50° skew. For skews greater than 50°, the anchor blocks and the elastomeric membrane, installed in accordance with dimension "D", might require modifications to insure a minimum clearance of 1/2" from centerline of anchor studs to edge of parapet opening. The anchor blocks and the elastomeric membrane shall also be installed to the top of the parapet with the anchor studs spaced at 12" cts.

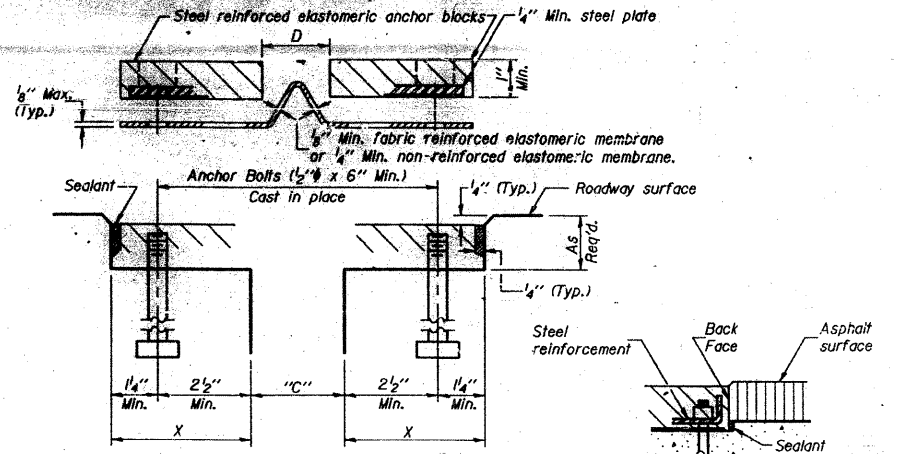


$$Y = X \cdot \left( \frac{F-C}{2} \right)$$

For dimension "F" see sheet #12.

**FORMING BLOCKOUT SKETCH**

**STATE OF ILLINOIS DEPARTMENT OF TRANSPORTATION**

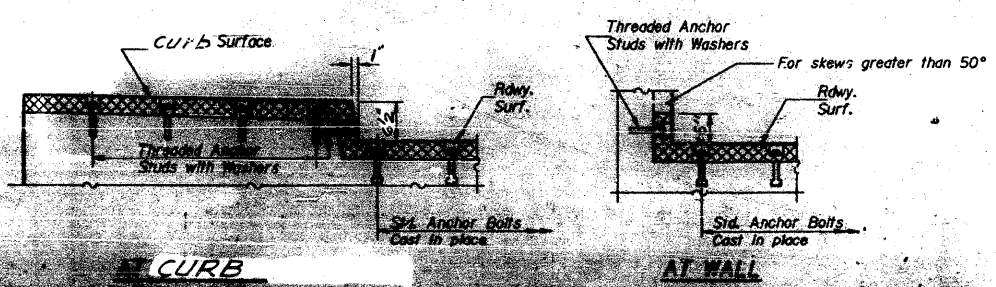
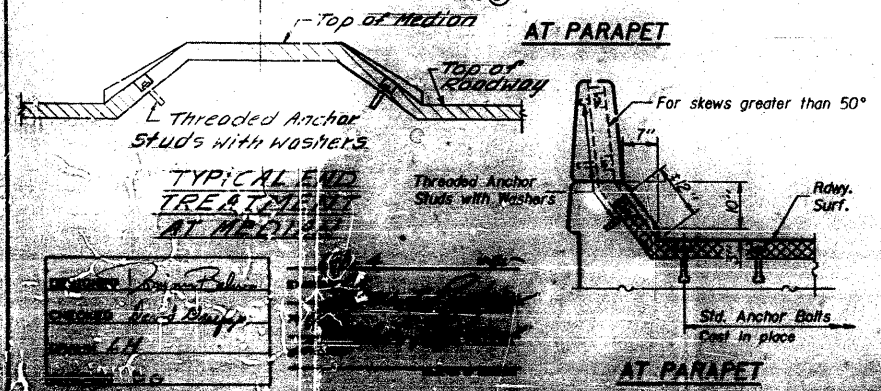
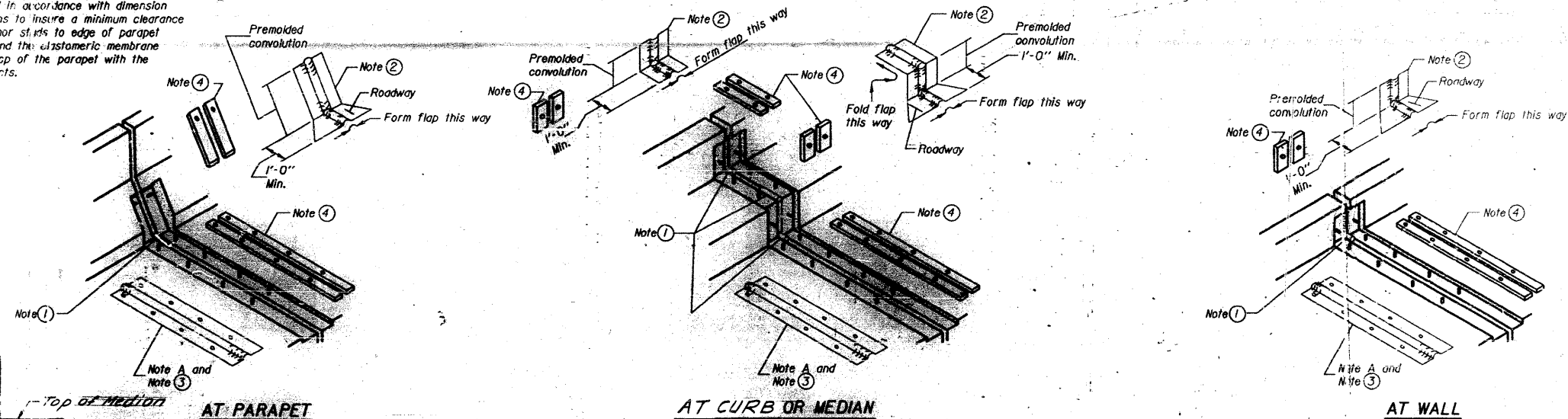


**CROSS SECTION**

**ANCHOR BLOCK REINFORCEMENT WITH ASPHALT SURFACE**

**GENERAL NOTES**

Continuous Seal Neoprene Expansion Joint shall consist of molded anchor blocks of elastomer and steel, field assembled over continuous lengths of elastomeric membrane. See Special Provisions. The elastomeric membrane shall be premolded with a single or a double upward convolution that will have a "memory" to return to its molded position upon joint closure. The steel reinforcement must extend up the back face of anchor blocks when asphalt surfaces are used but is optional in concrete breakout. The convolution length shall be such that the extended length will not be greater than the manufactured length when the joint is fully expanded in its design range and will not protrude above the anchor blocks when the joint is fully compressed. Joint openings shall be adjusted in accordance with Article 503.07(c) of the Standard Specifications when the deck is poured at an ambient temperature other than 50° F. The parapet and curb flaps may be furnished factory vulcanized to the roadway membrane provided the centerline of the convolution is maintained and the process and method meet the approval of the Engineer.



**CONTINUOUS SEAL TYPE NEOPRENE EXPANSION JOINTS**  
 For 2", 2 1/2" and 4" Movement  
**EA. RTE. 14 SEC. 64-1VB1**  
**S.T. CLAIR COUNTY**  
**STA. 218+07.13**

FOR INFORMATION ONLY

**CB Coombe-Bloxdorf P.C.**  
 - CIVIL ENGINEERS -  
 - STRUCTURAL ENGINEERS -  
 - LAND SURVEYORS -  
 Design Firm License No. 184-002703

FILE NAME =	USER NAME = CFC...	DESIGNED -	REVISED -	<b>STATE OF ILLINOIS DEPARTMENT OF TRANSPORTATION</b>	<b>SN 082-0030 PLANS (REHABILITATION PLANS)</b>	F.A.P. R.T.E.	SECTION	COUNTY	TOTAL SHEETS	SHEET NO.
...1155-0876882-exist-bridge-repair-plans-25.dgn	PLOT SCALE = 40,000,000 // IN.	DRAWN -	REVISED -			312	64-1VBR	ST. CLAIR	259	155
PLOT DATE = 8/5/2010	DATE - / /	CHECKED -	REVISED -			CONTRACT NO. 76882				
CB JOB NO 09021		DATE - / /	REVISED -			ILLINOIS FED. AID PROJECT				