

STATE OF ILLINOIS  
DEPARTMENT OF TRANSPORTATION

ROUTE NO.	SECTION	COUNTY	SHEET NO.	TOTAL SHEETS
14	64-1VBR	ST. CLAIR	25	156
SHEET NO. 156				

Joint Size	1/2"	2"	4"
2"	2"	2"	2"
2 1/2"	2 1/2"	3 1/2"	3 1/2"
4"	3"	2 1/2"	2 1/2"

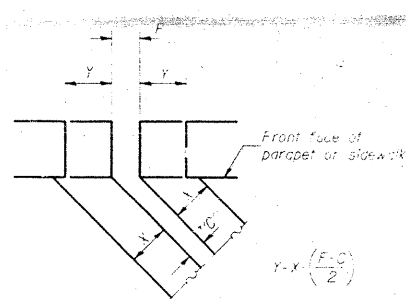
**INSTALLATION NOTES**

1. Install sponge mastic into position against form flap convolution.
2. Install parapet or sidewalk after roadway has to fit before applying sealant.
3. Install continuous seal in roadway.
4. Install anchor bolts as indicated.

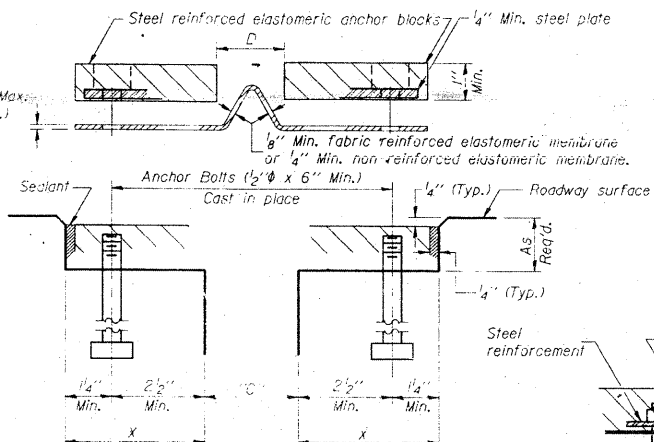
NOTE A: Maximum spacing of anchor bolts shall be 2' centers.

**SKEW LIMITATIONS**

The details of the anchor blocks and the elastomeric membrane in the parapet, as shown, are for up to 50° skew. For skews greater than 50°, the anchor blocks and the elastomeric membrane, installed in accordance with dimensions 'D', might require modifications to insure a full seal at the opening. The anchor blocks and the elastomeric membrane shall also be installed to the top of the parapet with the anchor studs spaced at 12" cts.

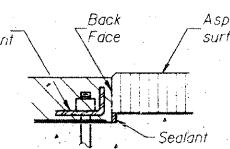


**FORMING BLOCKOUT SKETCH**



**CROSS SECTION**

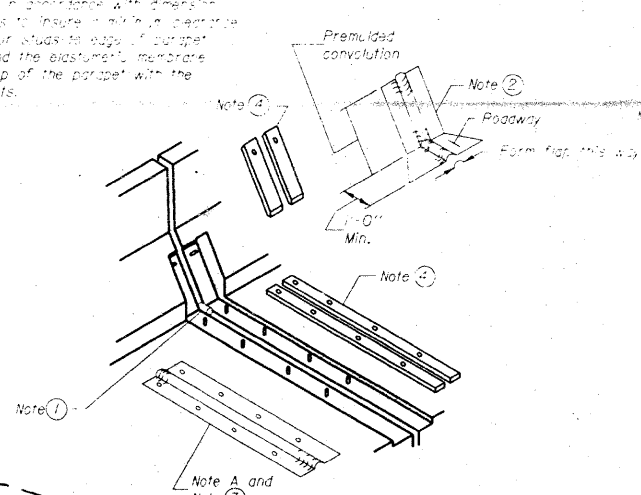
**ANCHOR BLOCK REINFORCEMENT WITH ASPHALT SURFACE**



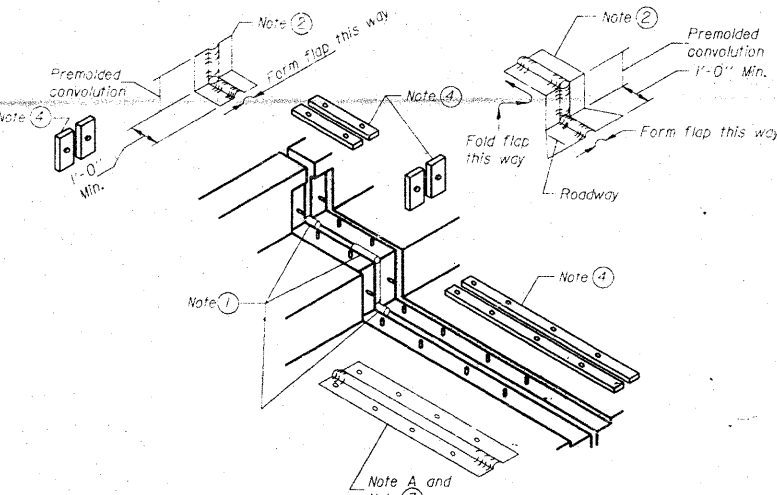
**GENERAL NOTES**

Continuous Seal Neoprene Expansion Joint shall consist of molded anchor blocks of elastomer and steel, field assembled over continuous lengths of elastomeric membrane. See Special Provisions.  
The elastomeric membrane shall be pre-molded with a single or a double upward convolution that will have a "memory" to return to its molded position upon joint closure.  
The steel reinforcement must extend up the back face of anchor blocks when asphalt surfaces are used but is optional in concrete blockout.  
The convolution length shall be such that the extended length will not be greater than the manufactured length when the joint is fully expanded in its design range and will not protrude above the anchor blocks when the joint is fully compressed.  
Joint openings shall be adjusted in accordance with Article 503.07(c) of the Standard Specifications when the deck is poured at an ambient temperature other than 50° F.  
The parapet and curb flaps may be furnished factory vulcanized to the roadway membrane provided the centerline of the convolution is maintained and the process and method meet the approval of the Engineer.

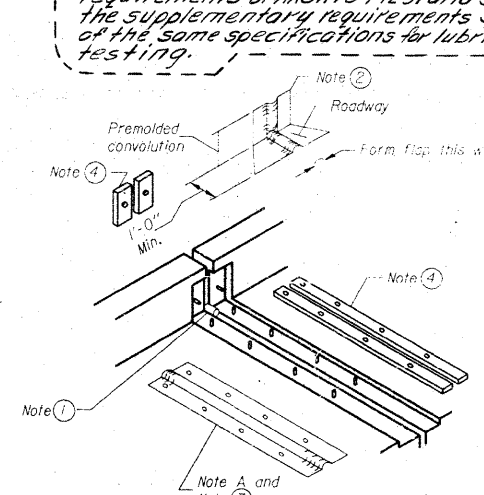
Anchor bolts, washers and nuts, to be plated against corrosion in accordance with the special provisions, shall be zinc-coated by the mechanical plating method conforming to ASTM B695, Class 50, zinc-coated nuts shall be tapered oversize in accordance with the requirements of AASHTO M291 and shall meet the supplementary requirements S1.1 thru S12.1 of the same specifications for lubricant and testing.



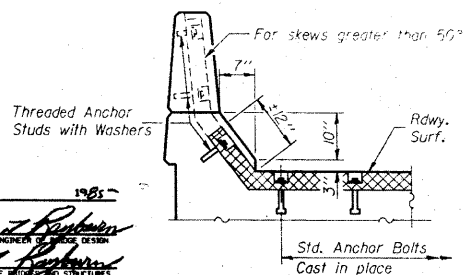
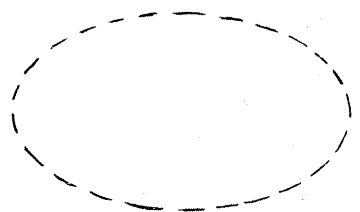
**AT PARAPET**



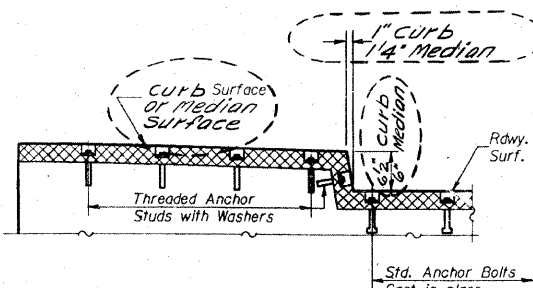
**AT CURB OR MEDIAN**



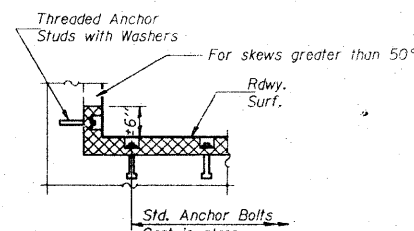
**AT WALL**



**AT PARAPET**



**AT CURB OR MEDIAN  
TYPICAL END TREATMENTS**



**AT WALL**

**CONTINUOUS SEAL TYPE  
NEOPRENE EXPANSION JOINTS**  
For 2", 2 1/2" and 4" Movement  
**FA. RTE. 14 SEC. 64-1VBI**  
**ST. CLAIR COUNTY**  
**STA. 218+07.13**

AS REVISED 3-28-86 R.E.A.

DESIGNED: *James J. Rayburn*  
CHECKED: *David S. ...*  
DRAWN: *L.H.*  
CHECKED: *D.G.*  
EJ-CS 12-1-83

EXAMINER: *James J. Rayburn*  
PASSED: *James J. Rayburn*  
APPROVED: *James J. Rayburn*  
DIRECTOR OF HIGHWAYS



FOR INFORMATION ONLY

FILE NAME =	USER NAME = CFC...	DESIGNED -	REVISED -	STATE OF ILLINOIS DEPARTMENT OF TRANSPORTATION	SN 082-0030 PLANS (REHABILITATION PLANS)	SCALE: SHEET NO. OF SHEETS STA. TO STA.	ILLINOIS FED. AID PROJECT
...1156-D876882-exist-bridge-repair-plans-26.dgn	PLOT SCALE = 40.000000' / IN.	DRAWN -	REVISED -				
CB JOB NO 09021	PLOT DATE = 8/5/2010	CHECKED -	REVISED -				
		DATE - / /	REVISED -				

**CB** Coombe-Bloxdorf P.C.  
- CIVIL ENGINEERS -  
- STRUCTURAL ENGINEERS -  
- LAND SURVEYORS -  
Design Firm License No. 184-002703

F.A.P. RTE.	SECTION	COUNTY	TOTAL SHEETS	SHEET NO.
312	64-1VBR	ST. CLAIR	259	156
CONTRACT NO. 76882				