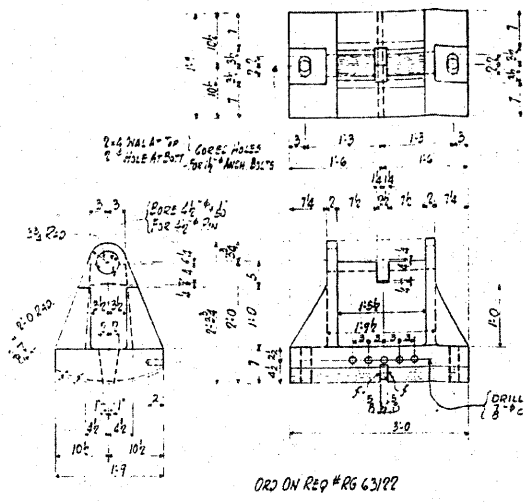
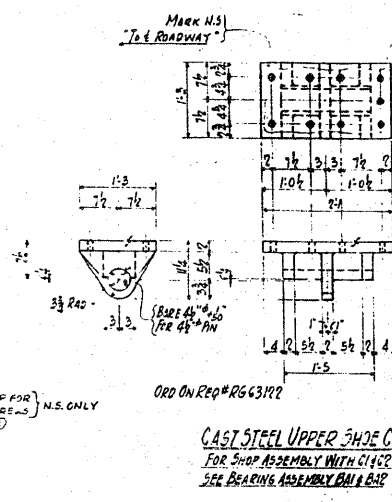


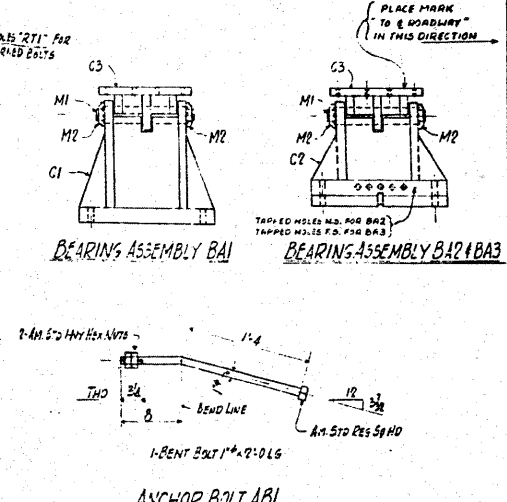
CAST STEEL BOLSTER C1
FOR SHOP ASSEMBLY WITH C3
SEE BEARING ASSEMBLY BAI



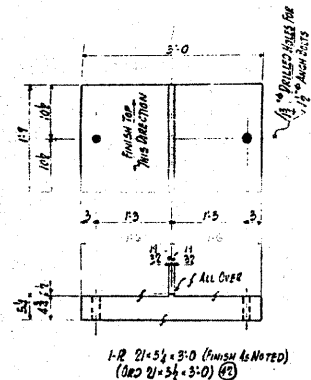
CAST STEEL ROCKER C2
FOR SHOP ASSEMBLY WITH C3
SEE BEARING ASSEMBLY BAI



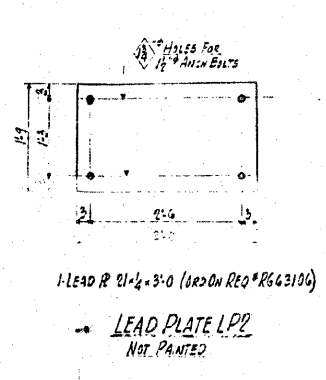
CAST STEEL UPPER SHOE C3
FOR SHOP ASSEMBLY WITH C1 & C2
SEE BEARING ASSEMBLY BAI & B1P



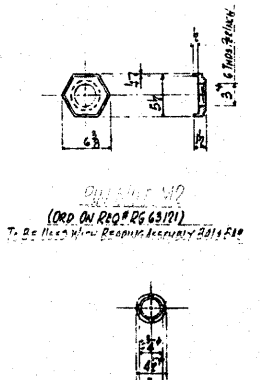
ANCHOR BOLT A61
NOT PAINTED



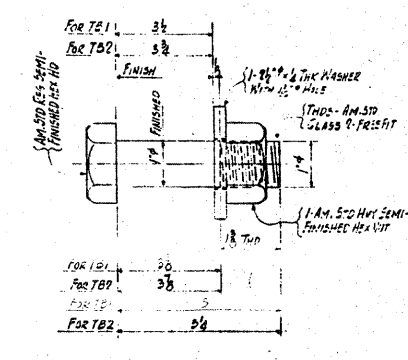
ROCKER PLATE RPI
NOT PAINTED



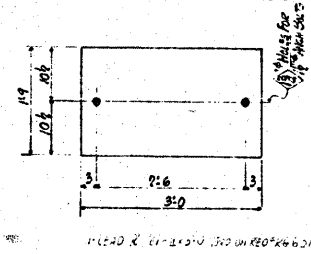
LEAD PLATE LPP
NOT PAINTED



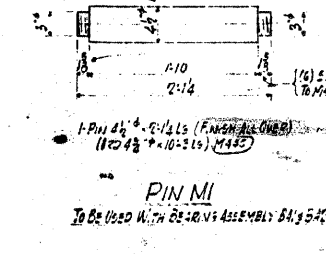
PILOT NUT M3
(ORD ON REQ #RG63191)
NOT PAINTED



TURNED BOLT TB1 AND TB2
NOT PAINTED



LEAD PLATE LPI
NOT PAINTED



PIN MI
TO BE USED WITH BEARING ASSEMBLY BAI & B1P

GENERAL NOTES
MATERIAL SPEC: STRUCTURAL STEEL ASTM A7
CASTINGS A.S.T.M. A27 GRADE 65-55 FULL ANNEAL
LEAD PLATES - COMMERCIAL STANDARD
WORKMANSHIP SPEC: ILLINOIS STATE HIGHWAY DEPT
SHOP INSPECTION: NOTIFY STATE OF ILLINOIS DIVISION OF HIGHWAYS
FINISHING & DRILLING: ALL FINISHING & DRILLING OF CASTINGS TO BE DONE BY BETHLEHEM STEEL CO.
PAINTING: ALL FINISHED SURFACES FOR & INCLUDING PINS SHALL BE OILED WITH ANTI-RUST COMPOUND OR LACQUER. ALL OTHER SURFACES SHALL BE GIVEN ONE COAT OF RED LEAD PAINT PER SPEC. UNLESS NOTED OTHERWISE. THREADS ON PINS & NUTS SHALL NOT BE PAINTED.
NUTS NONE
OPEN HOLES AS NOTED
BEAM SEE GENERAL NOTES
FINISHING AS NOTED
WELDING NONE
SHOP CONTACT SURFACES NOT PAINTED

TOTAL REQD	DESCRIPTION	MARK	SECTION
			A B C D
1	BEARING ASSEMBLY BAI	BAI	1
ONE	BEARING ASSEMBLY BAI2	BAI2	1
2	PACKED PLATE RPI	RPI	2
2	LEAD PLATE LPP	LPP	2
ONE	PILOT NUT M3	M3	1
ONE	DRIVING NUT M4	M4	1
20	TURNED BOLT TB1	TB1	20
8	TURNED BOLT TB2	TB2	8
300	ANCHOR BOLT A61	A61	72 72 72 72
ONE	BEARING ASSEMBLY BAI3	BAI3	1

DESIGN	GRADE SEPARATION FOR MISSOURI PACIFIC R.R.
PROJECT	PROJECT F-11351A ROUTE 4 SECTION 64-1V
LOCATION	NORTH OF DPO, ST. CLAIR COUNTY, ILLINOIS
DESIGNED BY	BETHLEHEM STEEL COMPANY
CHECKED BY	FABRICATED STEEL CONSTRUCTION
DATE	Drawings of Chicago - Fabrication at CHICAGO
IN CHARGE	DR. PRITCHER MADE BY
REVISION	REVISION
CONTRACT	CONTRACT C63364-1

FOR INFORMATION ONLY