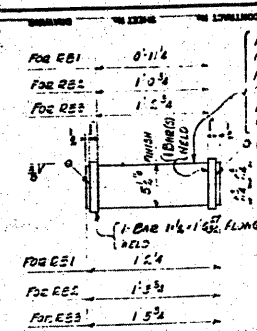
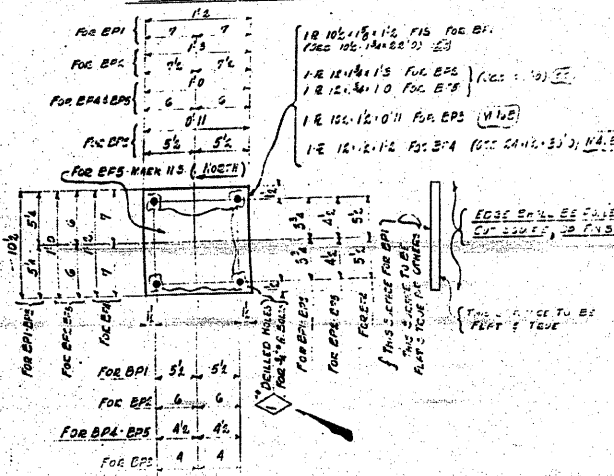


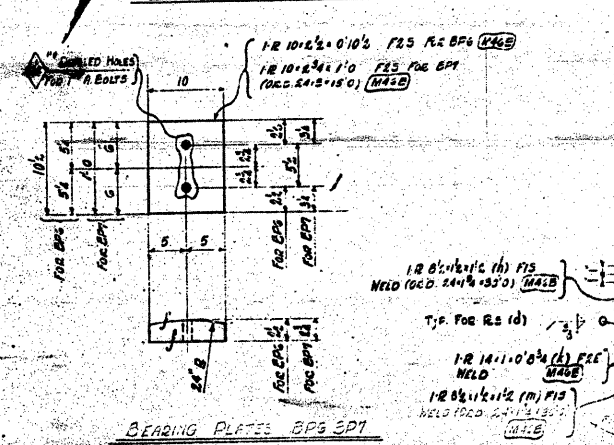
ER 12-7-9-10



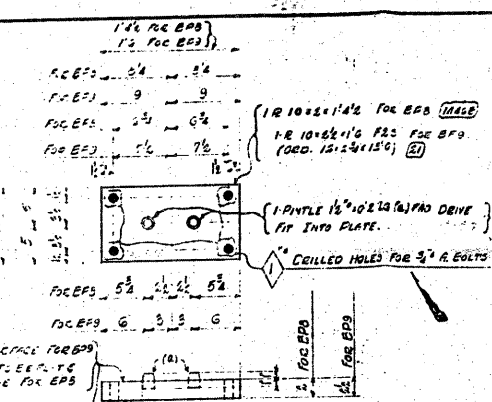
ROLLER BEARINGS RB1-RB3



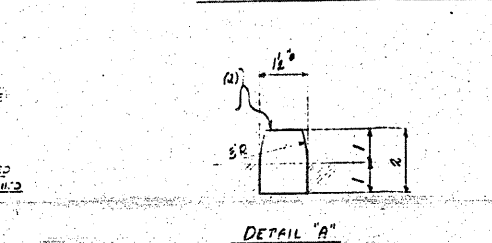
BEARING PLATES BP1-BP100



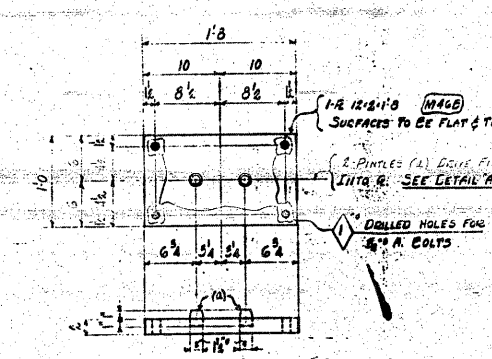
BEARING PLATES BP1-BP10



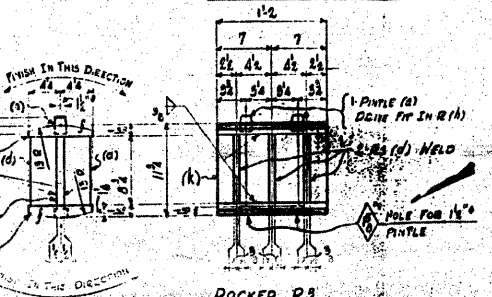
BEARING PLATES BP11-BP20



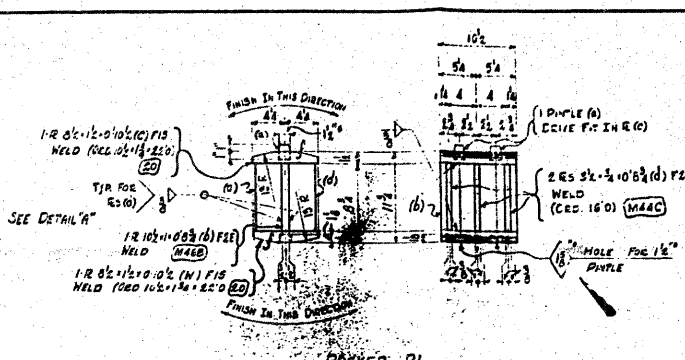
DETAIL "A"



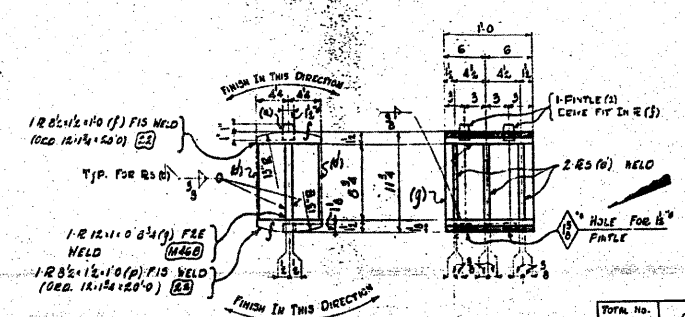
BEARING PLATE BP10



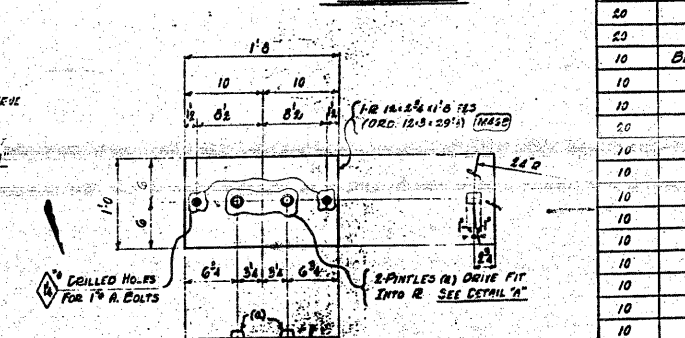
ROCKER R3



ROCKER R1



ROCKER R2



BEARING PLATE BP11

FOR GENERAL NOTES SEE SHEET 1

TOTAL No. Des'd	DESCRIPTION	MATERIAL	SECTION			
			A	B	C	D
20	ROLLER BEARINGS	RB1	24			
20		RB2				20
20		RB3	10			
10	BEARING PLATES	BP1	10			
10		BP2				10
10		BP3	10			
20		BP4				20
10		BP5	10			
10		BP6				10
10		BP7	10			
10		BP8	10			
10		BP9				10
10		BP10	10			
10		BP11	10			
10	ROCKERS	R1	10			
10		R2				10
10		R3	10			

STEERING MATERIAL - SPANS 1-2-3-4-5-6-8-9-10

TYPE: **GRADE SEPARATION FOR MISSOURI PACIFIC R.R.**

PROJECT: **PASSAGE OF GRADE 4 - SECTION 64-117**

LOC: **NORTH OF D.P.O. ST. CLAIR COUNTY, ILLINOIS**

BETHLEHEM STEEL COMPANY

PREPARED BY: **STEEL DEPARTMENT**

DESIGNED BY: **ENGINEER**

CHECKED BY: **ENGINEER**

DATE: **11-11-54**

CONTRACT: **CG 3344-1**

SHEET: **2**

FOR INFORMATION ONLY