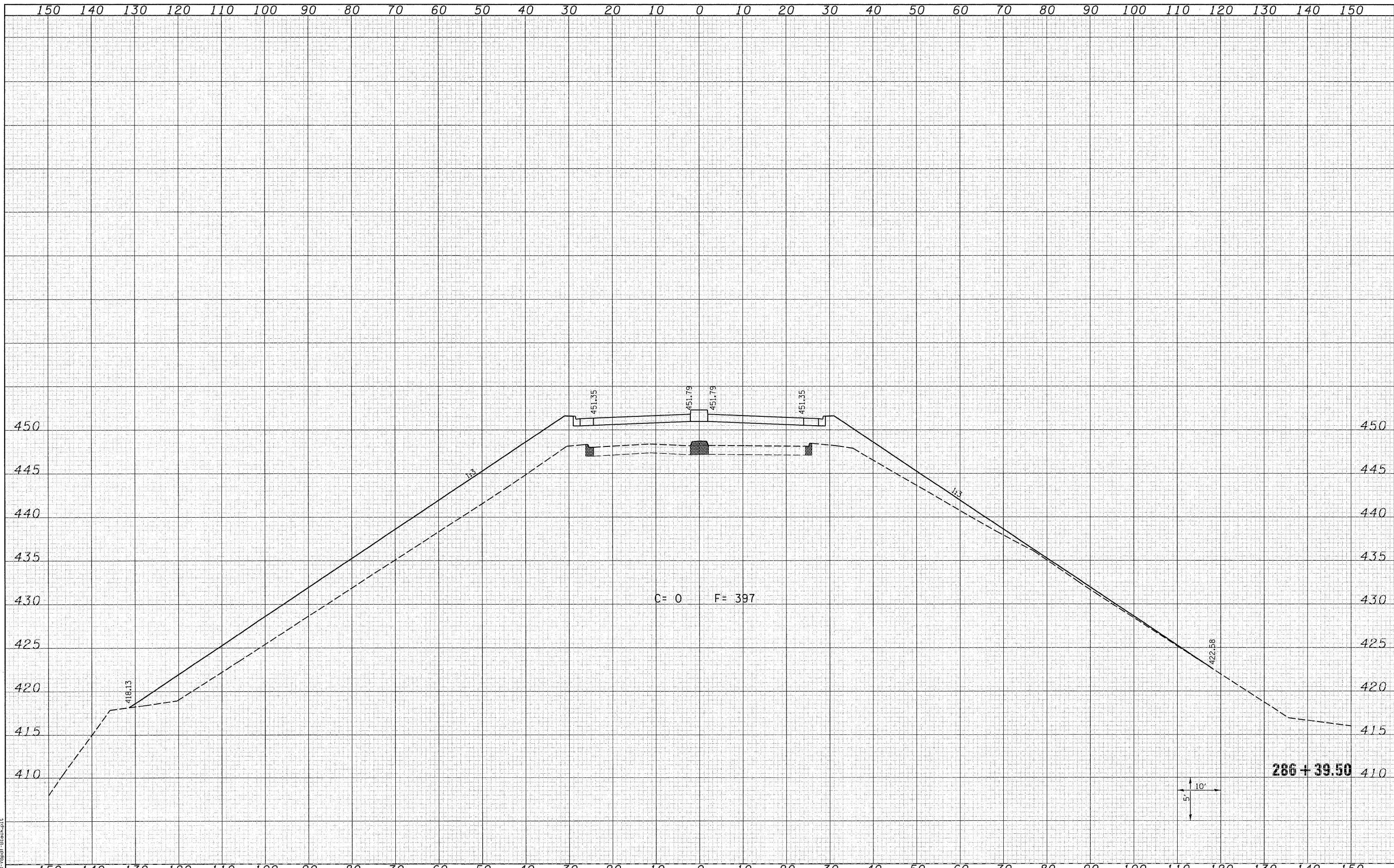


DATE	
BY	
FINAL SURVEY	SURVEYED
NOTE BOOK	PLOTTED
NO.	TEMPLATE
	AREAS
	CHECKED

DATE	
BY	
ORIGINAL SURVEY	SURVEYED
NOTE BOOK	PLOTTED
NO.	TEMPLATE
	AREAS
	CHECKED



LAST SAVED = 8/4/2010
 PEN TABLE = 18-Hgt.tbl
 PLOT DRIVER = TR-86dfr-Block.plt

FILE NAME =	ist:\07078\cad\1\plans\099-0876882-XSSht-IL3.dwg
USER NAME =	berrechmann
DESIGNED -	REVISD -
DRAWN -	REVISD -
CHECKED -	REVISD -
PLOT DATE = 8/9/2010 10:22:24 AM	DATE -
	REVISD -

DESIGNED -	REVISD -
DRAWN -	REVISD -
CHECKED -	REVISD -
DATE -	REVISD -

STATE OF ILLINOIS
 DEPARTMENT OF TRANSPORTATION



IL 3 CROSS SECTIONS

SCALE: 1=10'H =5'V SHEET NO. 19 OF 25 SHEETS STA. 286+39.50 TO STA. 286+39.50

F.A.P. RTE.	SECTION	COUNTY	TOTAL SHEETS	SHEET NO.
312	64-IVBR	ST. CLAIR	259	247
CONTRACT NO. 76882			ILLINOIS FED. AID PROJECT	