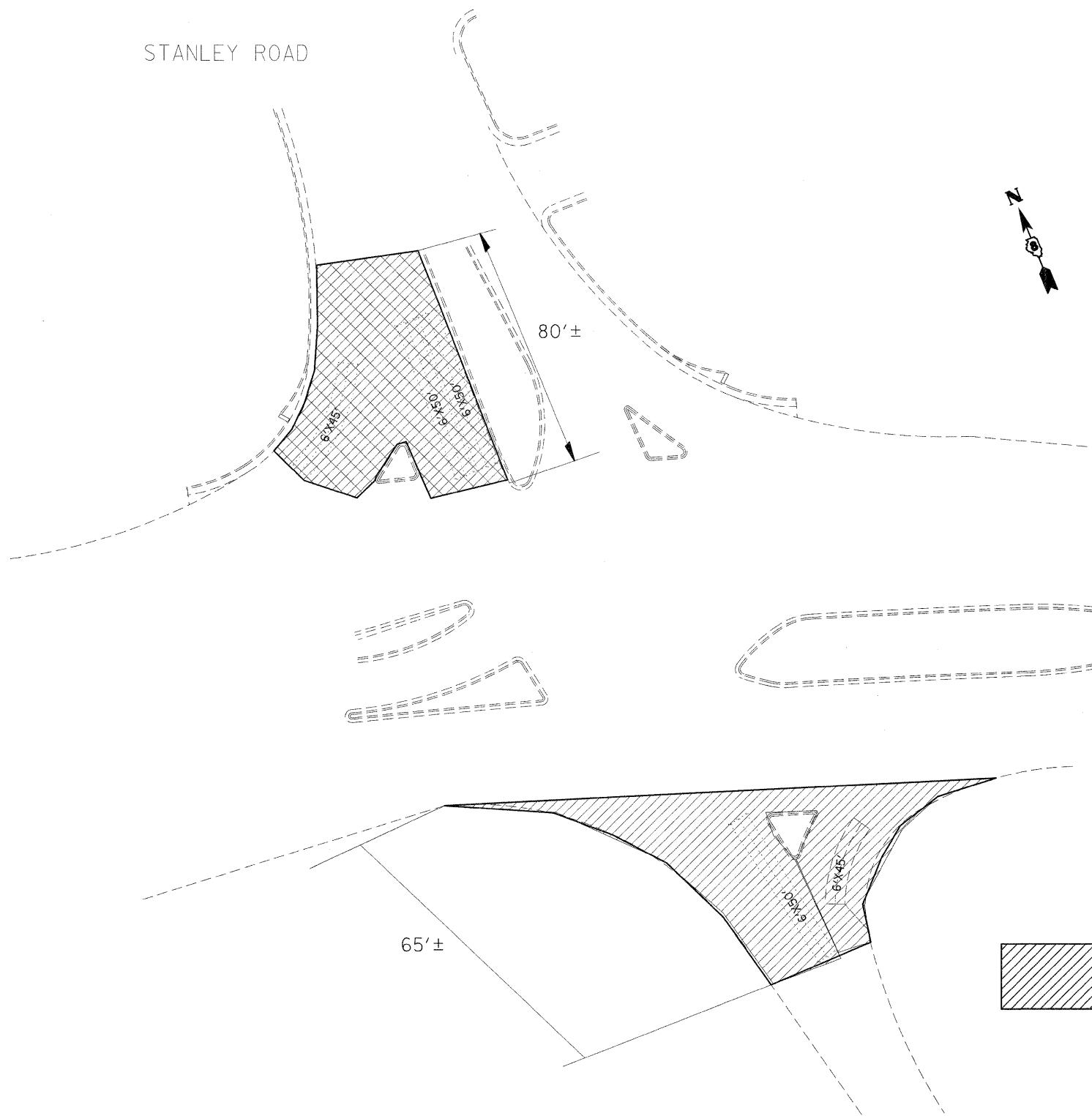


PROPOSED  
 10" PCC PAVEMENT  
 4" AGGREGATE SUBBASE  
 PAVEMENT REMOVAL

STANLEY ROAD



PROPOSED 1 1/2" BUTT JOINT (BJ)  
 INCIDENTAL HMA SURFACING  
 (2 1/2" @ EOP TO 1 1/2" @ BJ)

▲ REVISED SHEET 4/13/11

NOT TO SCALE

FILE NAME =	USER NAME = karlassal	DESIGNED -	REVISED -	<b>STATE OF ILLINOIS DEPARTMENT OF TRANSPORTATION</b>	<b>DETAILS</b>	F.A.P. RTE.	SECTION	COUNTY	TOTAL SHEETS	SHEET NO.	
ct:\pr_work\p\dot\karlassal\ad0169744\d87	bb00-sht-plan.dgn	DRAWN -	REVISED -			785	(132-2,3,4, 133-1)RS	MADISON	122	75	
	PLOT SCALE = 50.0000' / IN.	CHECKED -	REVISED -			CONTRACT NO. 76B80					
	PLOT DATE = 3/18/2011	DATE -	REVISED -			FED. ROAD DIST. NO. ILLINOIS FED. AID PROJECT					