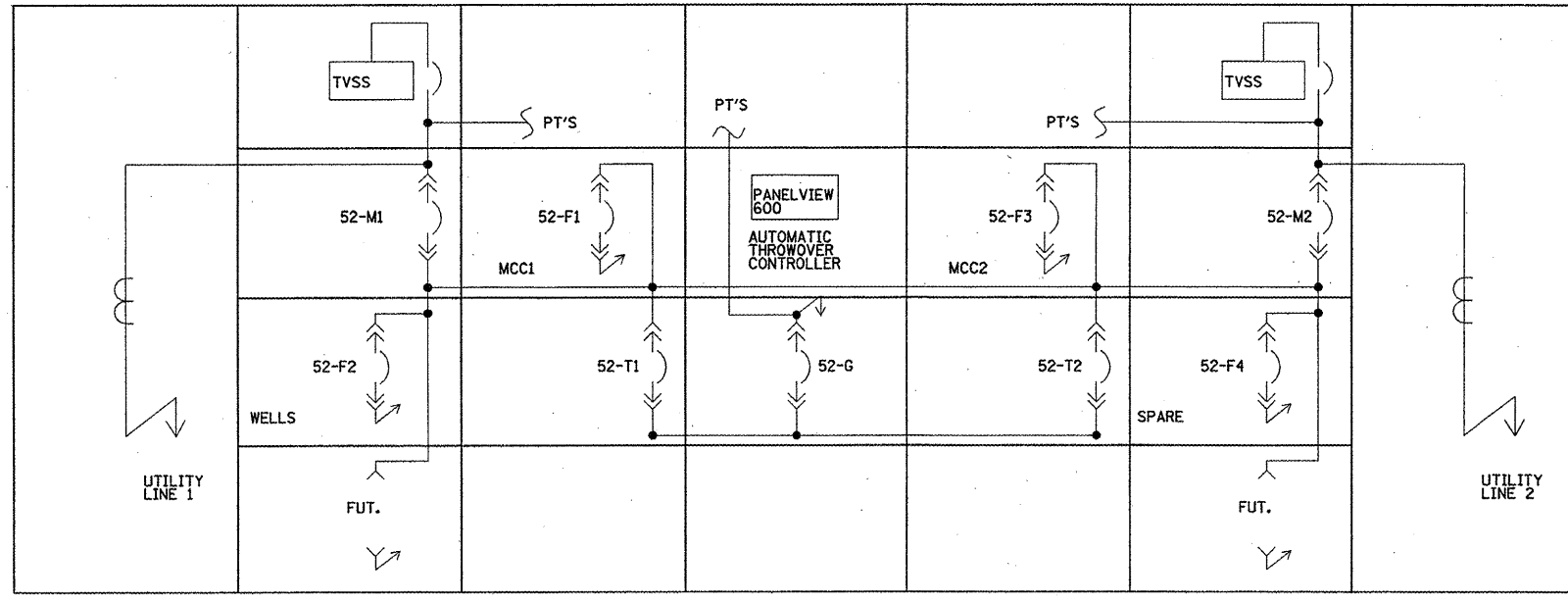


480V SWITCHGEAR ONE LINE DIAGRAM

- LEGEND:**
- AS CURRENT SENSOR
 - CT CURRENT TRANSFORMER
 - EO ELECTRIC OPERATOR
 - MO MANUALLY OPERATED
 - MCCB MOLDED CASE CIRCUIT BREAKER
 - PT POTENTIAL TRANSFORMER
 - CPT CONTROL POWER TRANSFORMER
 - CLF INDICATES CURRENT LIMITING TYPE
 - ↕ HIGH VOLTAGE CABLE LOAD BREAK CONNECTOR
 - ⊞ FUSE
 - ⊞ AS DRAW OUT TYPE LOW VOLTAGE POWER CIRCUIT BREAKER WITH BUILT-IN CURRENT SENSOR
 - ⊞ AS SOLID STATE TRIP DEVICE
 - LOWER LETTERS: L - LONG TIME DELAY, S - SHORT TIME DELAY, I - INSTANTANEOUS, G - GROUND FAULT
 - ⊞ SHUNT TRIP
 - ⊞ AMMETER

- NOTES:**
- SPACE SHALL BE PREPARED TO ACCEPT A FUTURE BREAKER.
 - ALL BREAKERS SHALL HAVE DIGITRIP DT-1150, WITH SYSTEM COMMUNICATION.



480V SWITCHGEAR FRONT ELEVATION

FOR INFORMATION ONLY

FILE NAME =	USER NAME = sifordb	DESIGNED -	REVISED -	STATE OF ILLINOIS DEPARTMENT OF TRANSPORTATION	BOWMAN AVENUE PUMP STATION SWITCHGEAR ONE LINE DIAGRAM & ELEVATION	F.A.I. RTE.	SECTION	COUNTY	TOTAL SHEETS	SHEET NO.
ct:\pw_work\pwsdpt\alfordb\20187823\d876182-sht-plan.dgn		DRAWN -	REVISED -			TO	82-(1,2)T-17	ST CLAIR	6	6
	PLOT SCALE = 814.7989' / IN.	CHECKED -	REVISED -			CONTRACT NO. 76E02				
	PLOT DATE = 10/20/2010	DATE -	REVISED -			FED. ROAD DIST. NO. ILLINOIS FED. AID PROJECT				
						SCALE:	SHEET NO. OF SHEETS STA. TO STA.			