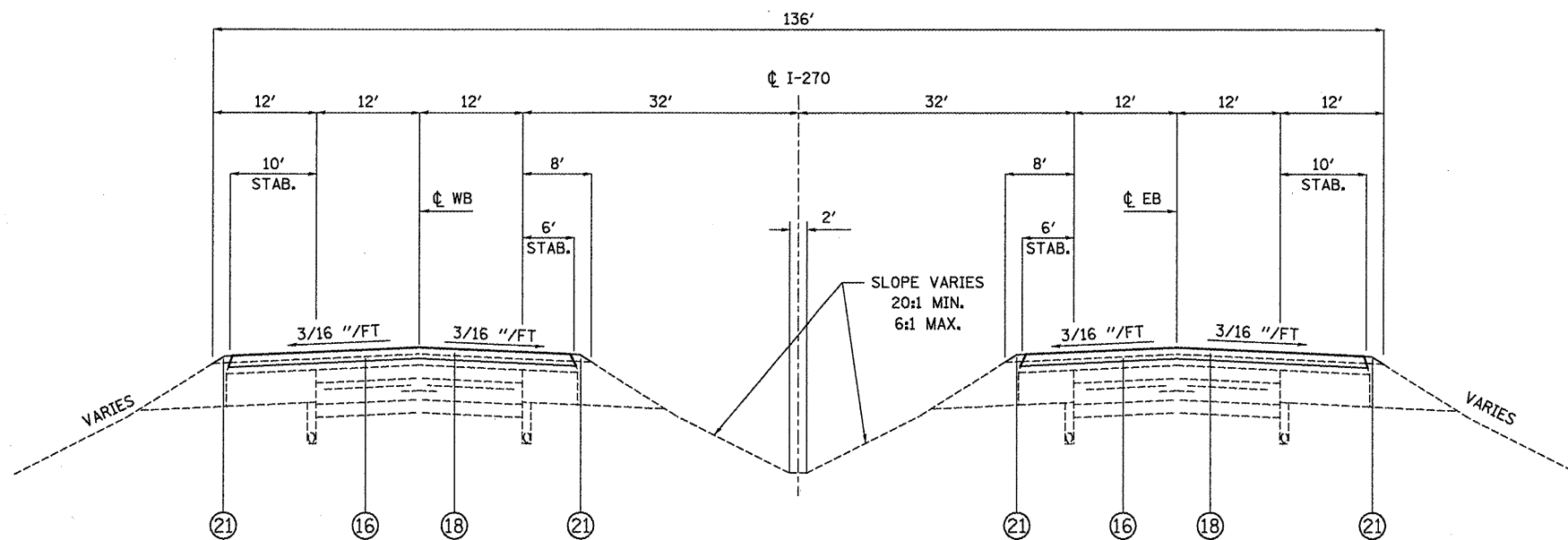


PROPOSED TYPICAL SECTION

EB STA 689+96.40 TO STA 690+26.00
 WB STA 684+65.00 TO STA 685+38.28
 WB STA 690+49.51 TO STA 691+69.00



PROPOSED TYPICAL SECTION

EB STA 685+12.50 TO STA 686+19.59
 EB STA 689+42.30 TO STA 689+96.40
 WB STA 685+41.83 TO STA 686+46.52
 WB STA 689+99.35 TO STA 691+69.00

LEGEND

- ① EXISTING PAVEMENT (10" JOINTED PCC)
- ② EXISTING 6" GRANULAR SUB-BASE
- ③ EXISTING HMA SHOULDERS (INSIDE DEPTH 7" - 15", OUTSIDE DEPTH 14" - 17 1/4")
- ④ EXISTING AGGREGATE SHOULDERS, TYPE B
- ⑤ EXISTING PIPE UNDERDRAIN
- ⑥ EXISTING HMA RESURFACING (8 5/8" - 10 1/4")
- ⑦ EXISTING PCC BRIDGE APPROACH PAVEMENT & PCC PAVEMENT CONNECTOR
- ⑧ EXISTING PAVEMENT FABRIC
- ⑨ EXISTING #5 DOWEL BARS @ 2'-6" CTRS
- ⑩ EXISTING P.C.C. PAVEMENT (9"-6"-9")
- ⑪ EXISTING P.C.C. WIDENING - 9"
- ⑫ EXISTING HMA SURFACING (±4")
- ⑬ EXISTING HMA SHOULDER - 6"
- ⑭ EXISTING AGGREGATE SHOULDER TYPE B (WEDGE)
- ⑮ EXISTING SLAB STRUCTURE - ±22"
- ⑯ PROPOSED PCC SURFACE REMOVAL - VARIES
- ⑰ PROPOSED HMA SURFACE REMOVAL - VARIES
- ⑱ PROPOSED POLYMERIZED HMA SURFACE COURSE - VARIES
- ⑲ PROPOSED HMA SURFACE REMOVAL - 1 1/2"
- ⑳ PROPOSED POLYMERIZED HMA SURFACE COURSE - 1 1/2"
- ㉑ PROPOSED AGGREGATE SHOULDER, TYPE B

• VARIOUS
 •• D-8 BRIDGE APPROACH 2011-1
 ••• BOND & MADISON

FILE NAME = #FILE#	USER NAME = #USER#	DESIGNED -	REVISED -	STATE OF ILLINOIS DEPARTMENT OF TRANSPORTATION	I-270 TYPICAL SECTIONS			F.A. RTE.	SECTION	COUNTY	TOTAL SHEETS	SHEET NO.	
	PLOT SCALE = #SCALE#	DRAWN -	REVISED -		SCALE:	SHEET NO. 2 OF 3 SHEETS	STA.	TO STA.	•	••	•••	14	6
	PLOT DATE = #DATE#	CHECKED -	REVISED -									CONTRACT NO. 76E22	
		DATE -	REVISED -									ILLINOIS FED. AID PROJECT	