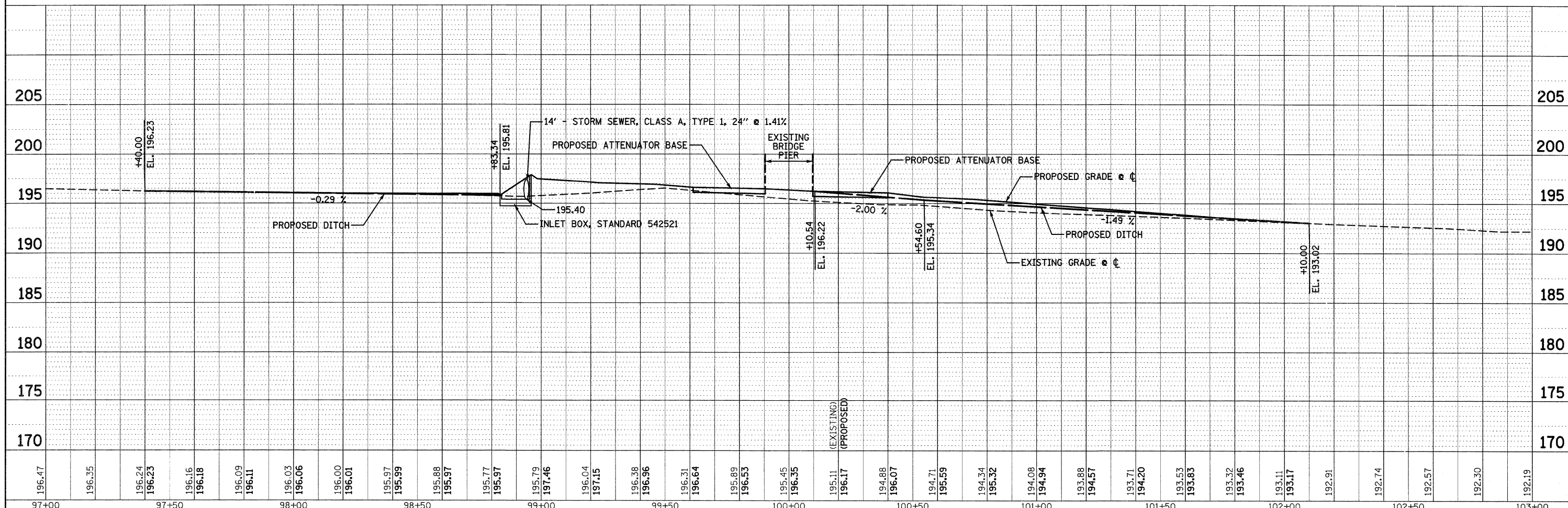
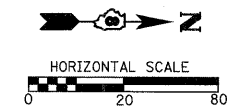
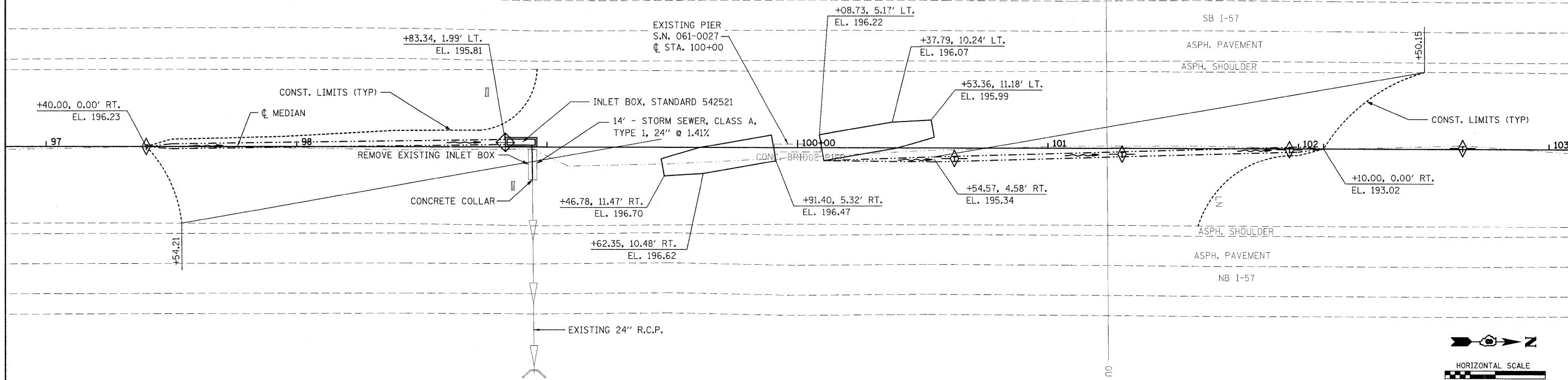


BENCHMARK: T.B.M. CUT SQUARE ON CONC. HEADWALL
 STA. 99+45.70, 82.5' LT.
 EL. 200.00



PLAN	SURVEYED	DATE
	NOTED	
	BY	
	DATE	
	NO. CHECKED	
	BY	
	DATE	
	NO. CHECKED	
	BY	
	DATE	

PROFILE	SURVEYED	DATE
	NOTED	
	BY	
	DATE	
	NO. CHECKED	
	BY	
	DATE	
	NO. CHECKED	
	BY	
	DATE	



196.47	196.35	196.24	196.23	196.16	196.18	196.09	196.11	196.03	196.06	196.00	196.01	195.97	195.99	195.88	195.97	195.77	195.97	195.79	197.46	196.04	197.15	196.38	196.36	196.31	196.64	195.89	196.53	195.45	196.35	195.11	196.17	194.88	196.07	194.71	195.59	194.34	195.32	194.08	194.94	191.88	194.57	193.71	194.20	193.53	193.83	193.32	193.46	193.11	193.17	192.91	192.74	192.57	192.30	192.19
97+00	97+50	98+00	98+50	99+00	99+50	100+00	100+50	101+00	101+50	102+00	102+50	103+00																																										

**STATE OF ILLINOIS
 DEPARTMENT OF TRANSPORTATION**

PLAN & PROFILE REVISED SHEET 4/12/11

F.A.I. RTE.	SECTION	COUNTY	TOTAL SHEETS	SHEET NO.
57	61-(1,2,3,4,5,6)-1	MARION	86	12
S.N. 061-0027		CONTRACT NO. 76E30		
FED. ROAD DIST. NO.		ILLINOIS FED. AID PROJECT		

HMG NO. 6513.01