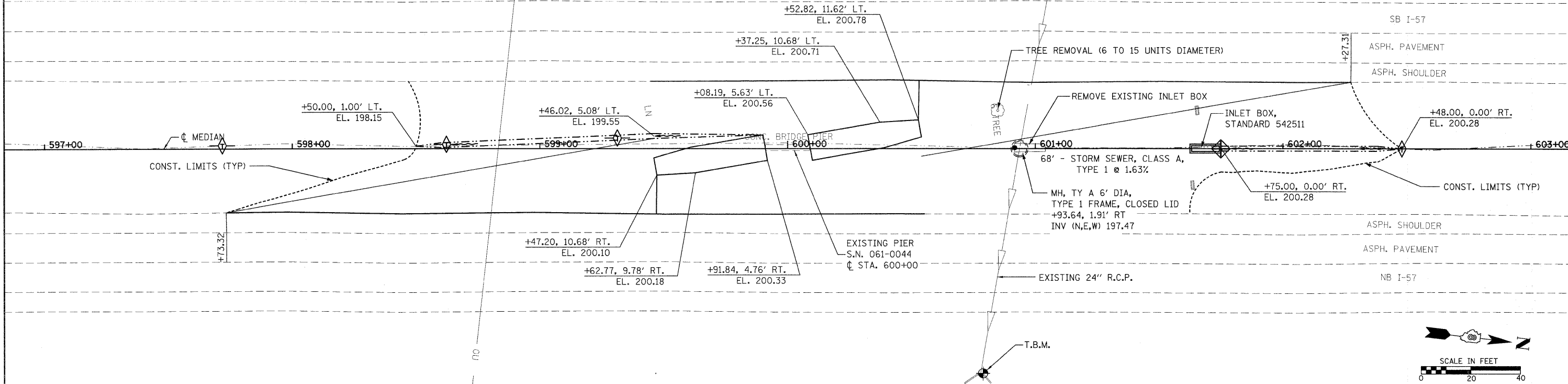
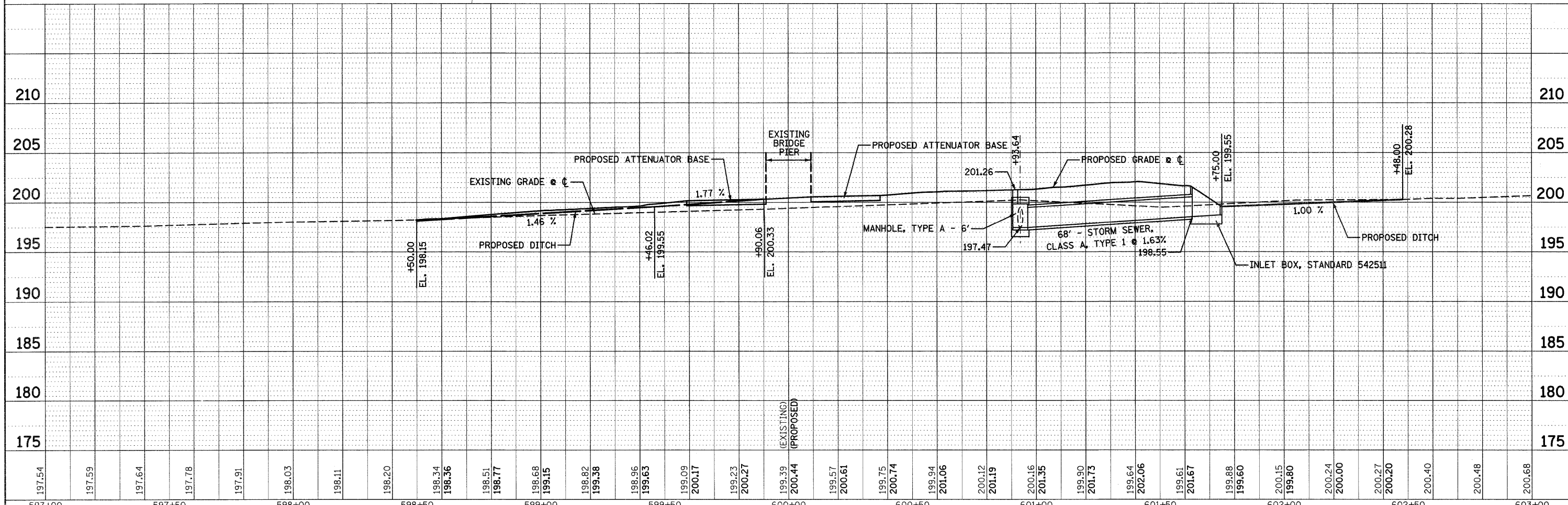


BENCHMARK: T.B.M. CUT SQUARE ON CONC. HEADWALL
 STA. 600+78.82, 90.53' RT.
 EL. 200.00

DATE	
BY	
PLAN	
NO.	
NO.	
NO.	
NO.	
NO.	
NO.	
NO.	
NO.	



DATE	
BY	
PROFILE	
NO.	
NO.	
NO.	
NO.	
NO.	
NO.	
NO.	
NO.	



597+00	597+50	598+00	598+50	599+00	599+50	600+00	600+50	601+00	601+50	602+00	602+50	603+00																																						
197.54	197.59	197.64	197.78	197.91	198.03	198.11	198.20	198.34	198.36	198.51	198.77	198.68	199.15	198.82	199.38	198.96	199.63	199.09	200.17	199.23	200.27	199.39	200.44	199.57	200.61	199.75	200.74	199.94	201.06	200.12	201.19	200.16	201.35	199.90	201.73	199.64	202.06	199.61	201.67	199.88	199.60	200.15	199.80	200.24	200.00	200.27	200.20	200.40	200.48	200.68

FILE NAME = USER NAME = keplarc1 DESIGNED - KMM REVISED -
 DRAWN - KHL REVISED -
 CHECKED - BGH REVISED -
 DATE - REVISED -

STATE OF ILLINOIS
DEPARTMENT OF TRANSPORTATION

PLAN & PROFILE **REVISED SHEET 4/12/11**

SCALE: SHEET NO. 1 OF 1 SHEETS STA. 597+00 TO STA. 603+00

F.A.I. SECTION COUNTY TOTAL SHEETS SHEET NO.
 57 61-(1,2,3,4,5,6)-1 MARION 86 17
 S.N. 061-0044 CONTRACT NO. 76E30
 FED. ROAD DIST. NO. ILLINOIS FED. AID PROJECT