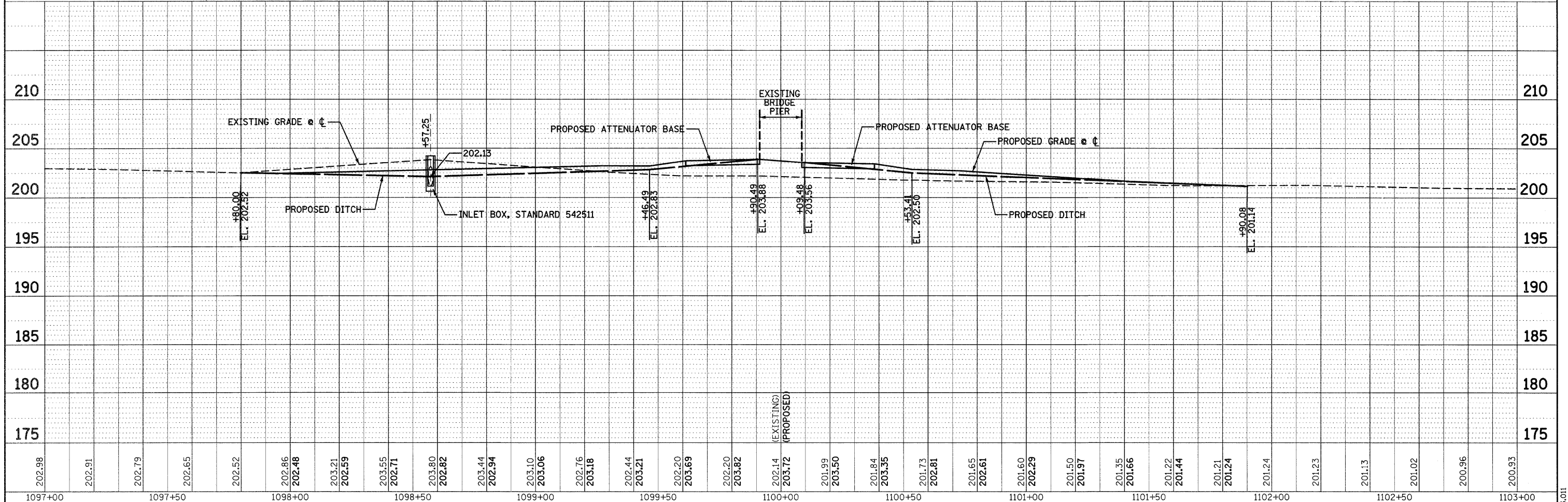
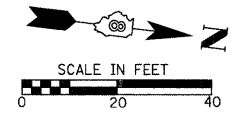
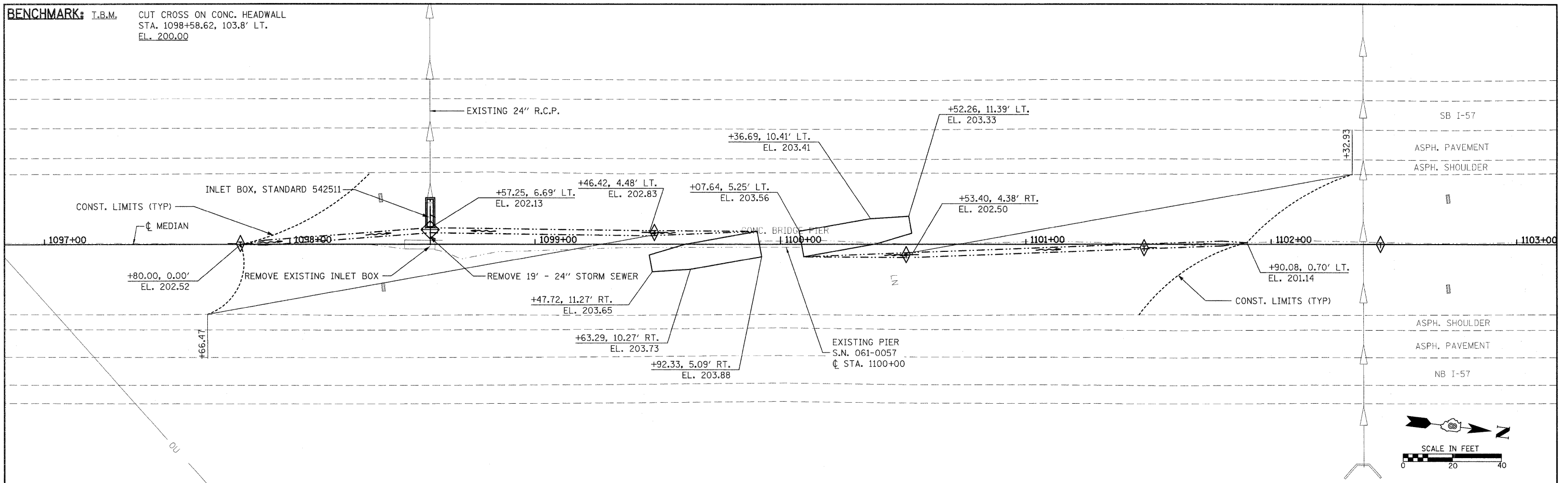


BENCHMARK: I.B.M. CUT CROSS ON CONC. HEADWALL
 STA. 1098+58.62, 103.8' LT.
 EL. 200.00

DATE	
BY	
PLAN	
NO.	
DATE	
BY	
PROFILE	
NO.	

DATE	
BY	
PROFILE	
NO.	
DATE	
BY	
PLAN	
NO.	



202.98	202.91	202.79	202.65	202.52	202.86	202.48	203.21	202.59	203.55	202.71	203.80	202.82	203.44	202.94	203.10	203.06	202.76	203.18	202.44	203.21	202.20	203.69	202.20	203.82	202.14	203.72	201.99	203.50	201.84	203.35	201.73	202.61	201.65	202.61	201.60	202.29	201.50	201.97	201.35	201.66	201.22	201.44	201.21	201.24	201.24	201.24	201.23	201.13	201.02	200.96	200.93
1097+00	1097+50	1098+00	1098+50	1099+00	1099+50	1100+00	1100+50	1101+00	1101+50	1102+00	1102+50	1103+00																																							

FILE NAME = USER NAME = keplerc1 DESIGNED - KMM REVISED - ---
 DRAWN - KHL REVISED - ---
 CHECKED - BGH REVISED - ---
 DATE - --- REVISED - ---

**STATE OF ILLINOIS
 DEPARTMENT OF TRANSPORTATION**

PLAN & PROFILE **REVISED SHEET 4/12/11**

F.A.I. RTE.	SECTION	COUNTY	TOTAL SHEETS	SHEET NO.
57	61-(1,2,3,4,5,6)-1	MARION	86	22
S.N. 061-0057		CONTRACT NO. 76E30		
FED. ROAD DIST. NO. - ILLINOIS FED. AID PROJECT				

HMC NO. 6513.01