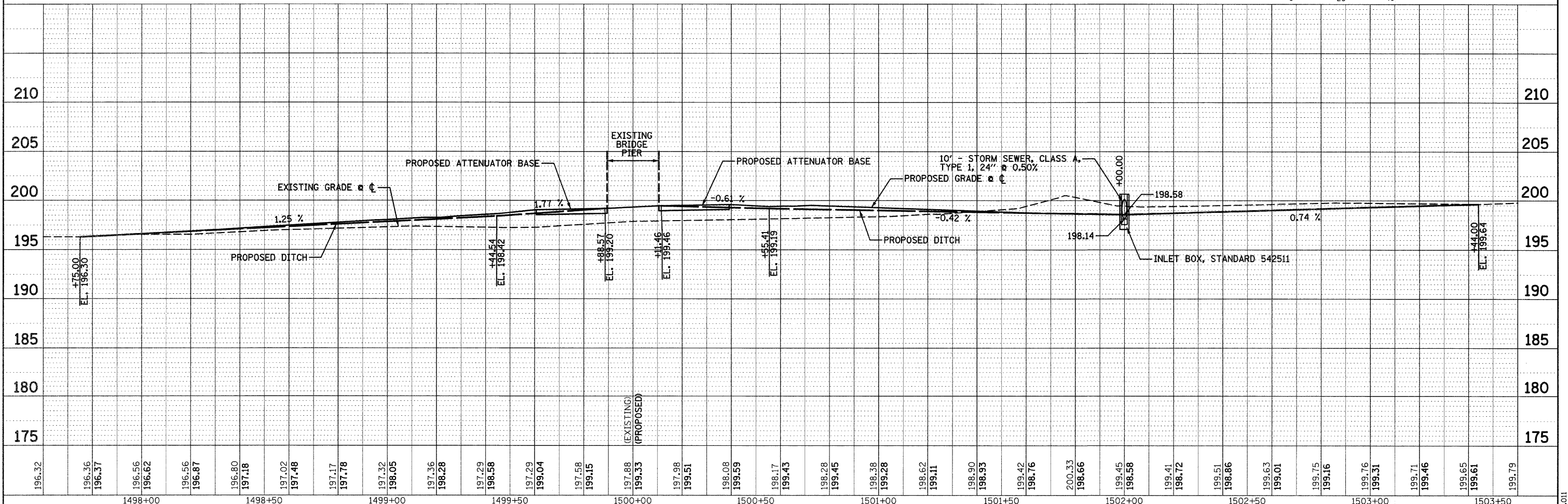
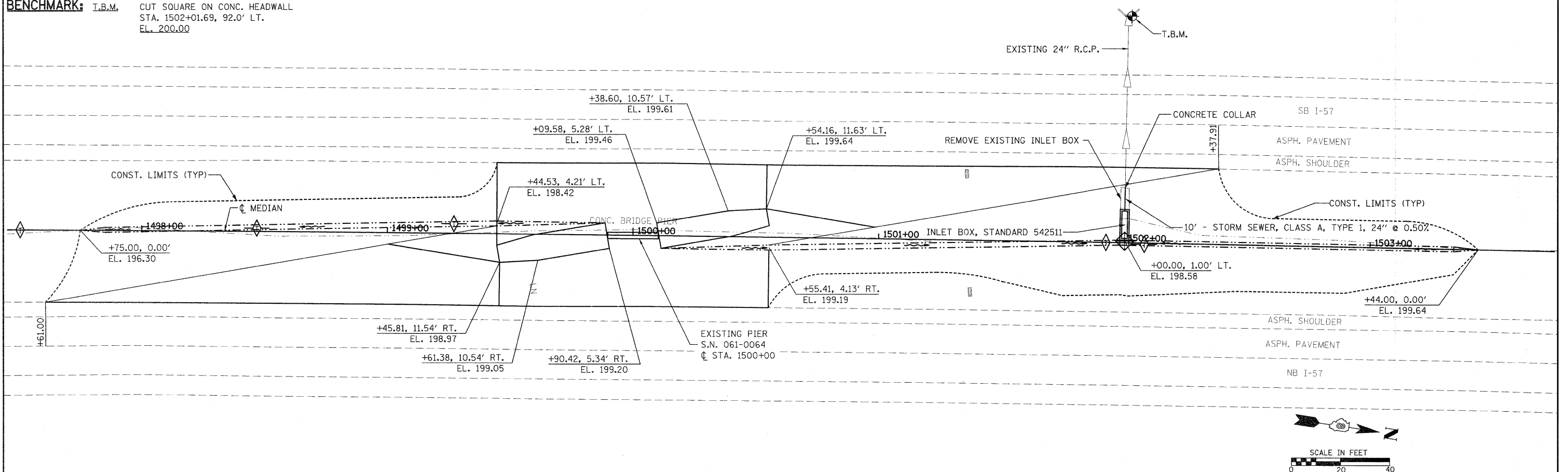


BENCHMARK: T.B.M. CUT SQUARE ON CONC. HEADWALL
 STA. 1502+01.69, 92.0' LT.
 EL. 200.00

DATE	
BY	
PLAN	
NO.	
NO.	
NO.	
NO.	
NO.	

DATE	
BY	
PROFILE	
NO.	
NO.	
NO.	
NO.	
NO.	



FILE NAME =	USER NAME = keplerc1	DESIGNED - KMM	REVISED -	STATE OF ILLINOIS DEPARTMENT OF TRANSPORTATION	PLAN & PROFILE REVISION SHEET 4/12/11	F.A.T. RTE. 57	SECTION 61-(1,2,3,4,5,6)-1	COUNTY MARION	TOTAL SHEETS 86	SHEET NO. 26
ea:\pw\work\pzd\dot\keplerc1\d\0263834\0876	08-shr-plnprf-0610064-26.dgn	DRAWN - KHL	REVISED -			S.N. 061-0064	CONTRACT NO. 76C30			
	PLOT SCALE = 20.0000' / IN.	CHECKED - BGH	REVISED -			FED. ROAD DIST. NO. ILLINOIS FED. AID PROJECT				
	PLOT DATE = 3/16/2011	DATE -	REVISED -							