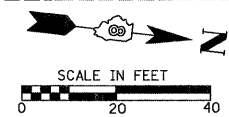
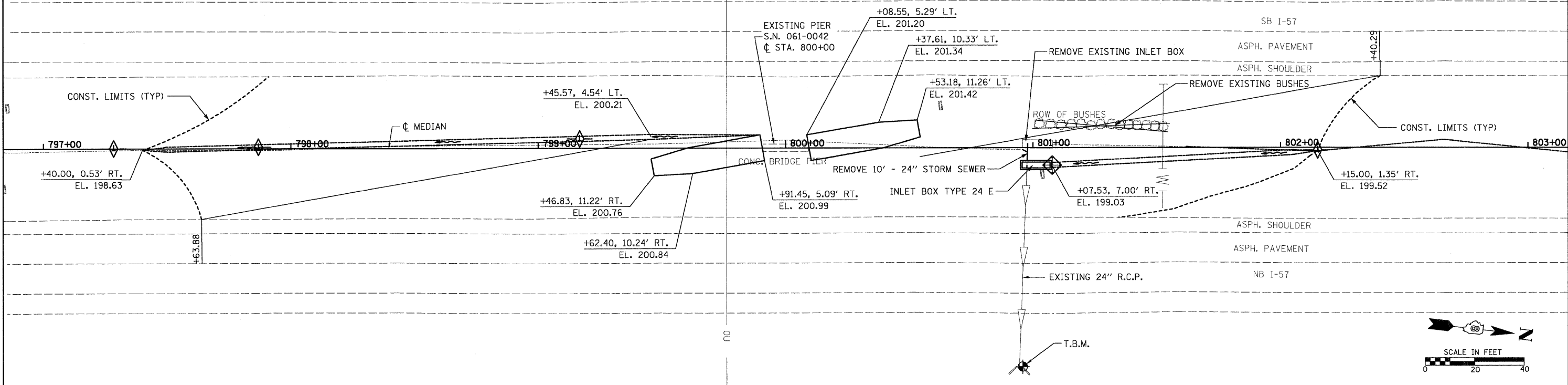
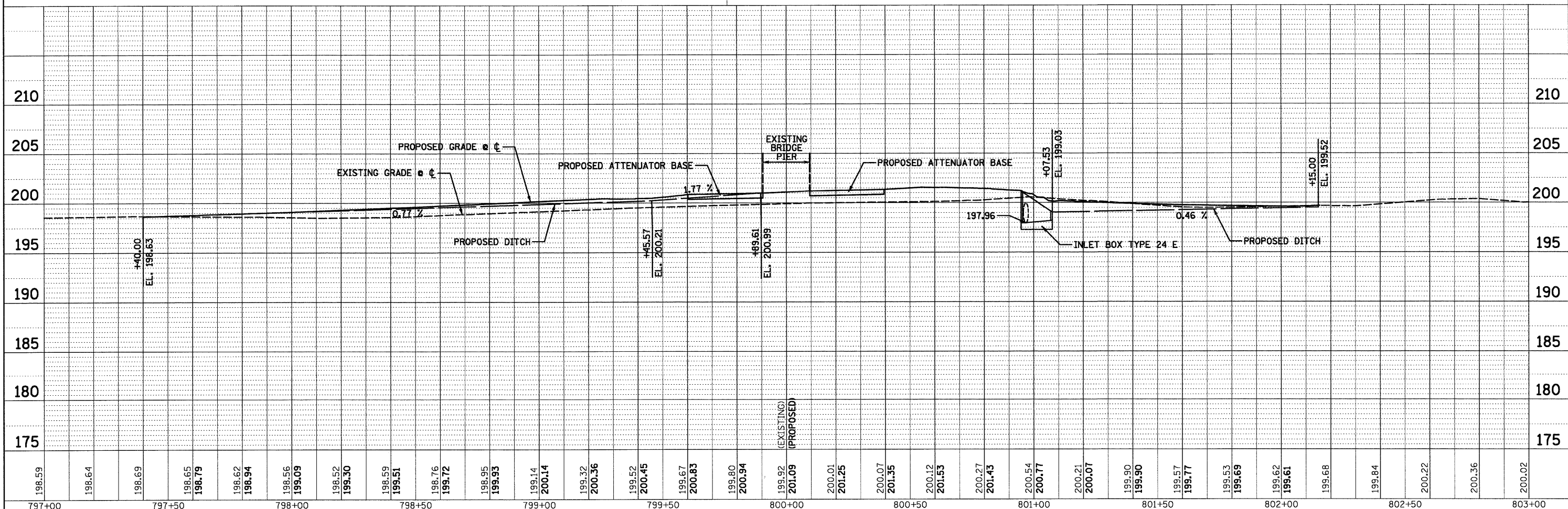


BENCHMARK: I.B.M. CUT SQUARE ON CONC. HEADWALL
 STA. 800+95.81, 88.2' RT.
 EL. 200.00

PLAN
 DATE: _____ BY: _____
 NO. _____
 FILE NAME: _____



PROFILE
 DATE: _____ BY: _____
 NO. _____
 FILE NAME: _____



198.59	198.64	198.69	198.65	198.79	198.62	198.94	198.56	199.09	198.52	199.30	198.59	199.51	198.76	199.72	198.95	199.93	199.14	200.14	199.32	200.36	199.52	200.45	199.67	200.83	199.80	200.94	199.92	201.09	200.01	201.25	200.07	201.35	200.12	201.53	200.27	201.43	200.54	200.77	200.21	200.07	199.90	199.90	199.57	199.77	199.53	199.69	199.62	199.61	199.68	199.84	200.22	200.36	200.02
797+00	797+50	798+00	798+50	799+00	799+50	800+00	800+50	801+00	801+50	802+00	802+50	803+00																																									

FILE NAME = USER NAME = .USERDESCR.
 h:\6513 idot d8 var\6513.01\w\1\cadd\sheet\0876E30-sht-plnprf-0610042-19.dgn
 PLOT SCALE = 20.0000" / IN.
 PLOT DATE = 2/2/2011

DESIGNED - KMM
 DRAWN - KHL
 CHECKED - BGH
 DATE -

REVISED -
 REVISED -
 REVISED -
 REVISED -

**STATE OF ILLINOIS
 DEPARTMENT OF TRANSPORTATION**

PLAN & PROFILE
 SCALE: SHEET NO. 1 OF 1 SHEETS STA. 797+00 TO STA. 803+00

F.A.I. RTE. 57	SECTION 61-(1,2,3,4,5,6)-1	COUNTY MARION	TOTAL SHEETS 86	SHEET NO. 19
S.N. 061-0042		CONTRACT NO. 76E30		
FED. ROAD DIST. NO. ILLINOIS FED. AID PROJECT				