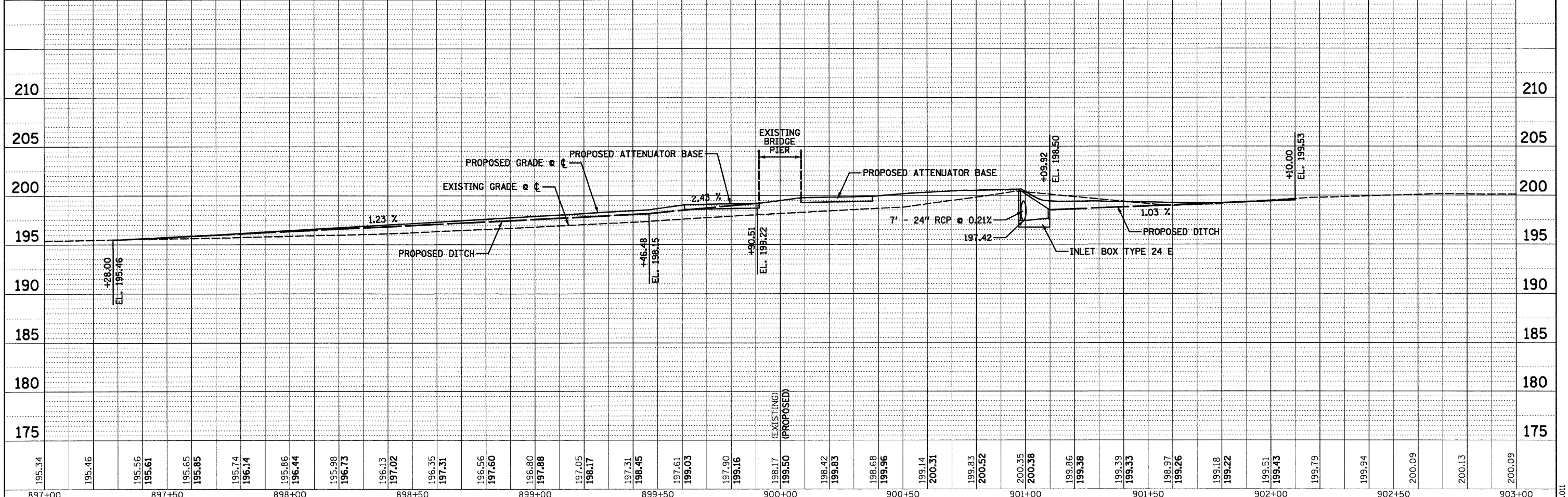
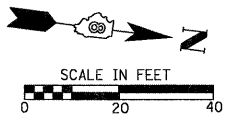
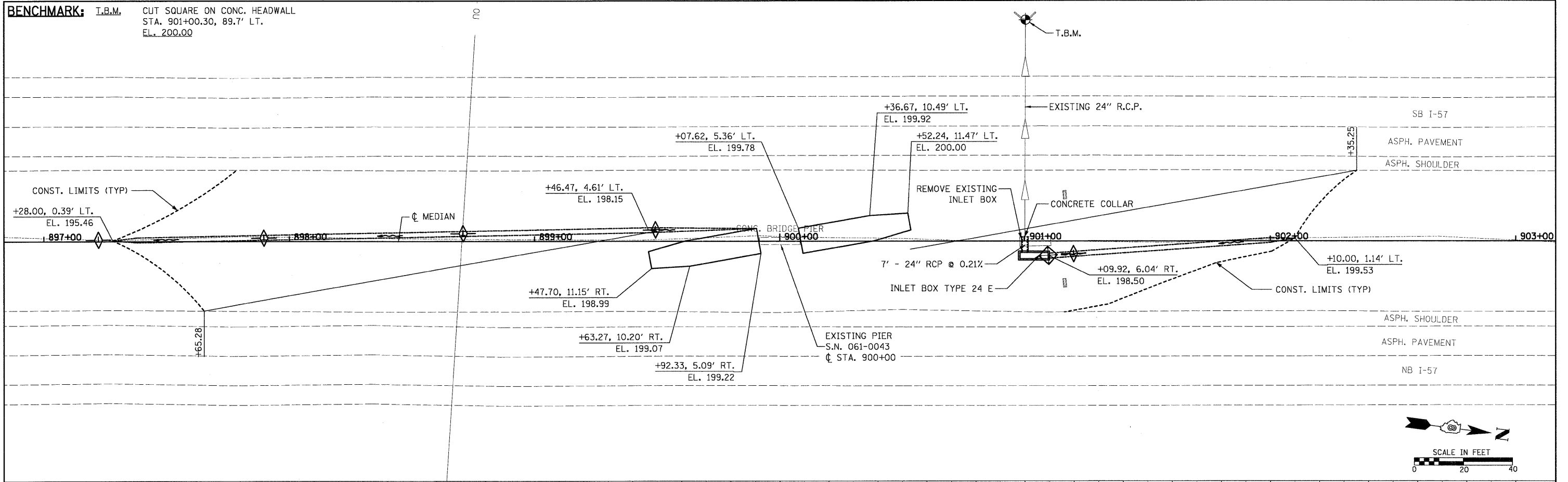


BENCHMARK: T.B.M. CUT SQUARE ON CONC. HEADWALL
STA. 901+00.30, 89.7' LT.
EL. 200.00



195.34	195.46	195.56	195.61	195.65	195.85	195.74	196.14	195.86	196.44	195.98	196.73	196.13	197.02	196.35	197.31	196.56	197.60	196.80	197.88	197.05	198.17	197.31	198.45	197.61	199.03	197.90	199.16	198.17	199.50	198.42	199.83	198.68	199.96	199.14	200.31	199.83	200.52	200.35	200.38	199.86	199.38	199.39	199.33	198.97	199.26	199.18	199.22	199.51	199.43	199.79	199.94	200.09	200.13	200.09
897+00		897+50		898+00		898+50		899+00		899+50		900+00		900+50		901+00		901+50		902+00		902+50		903+00																														

STATE OF ILLINOIS
DEPARTMENT OF TRANSPORTATION

PLAN & PROFILE

F.A.I. RTE. 57	SECTION 61-(1,2,3,4,5,6)-I	COUNTY MARION	TOTAL SHEETS 86	SHEET NO. 20
S.N. 061-0043		CONTRACT NO. 76E30		