

F.A.P. RTE.	SECTION	COUNTY	TOTAL SHEETS	SHEET NO.
310	60-15SG	MADISON	54	1
		ILLINOIS	CONTRACT NO. 76E76	

INDEX OF SHEETS

- 1 COVER SHEET
- 2 GENERAL NOTES & COMMITMENTS
- 3 SUMMARY OF QUANTITIES
- 4-6 SCHEDULES OF QUANTITIES
- 7 GUARDRAIL DETAILS
- 8-28 SIGNING DETAILS
- 29-30 BREAKAWAY WIDE FLANGE STEEL SIGN POST TABLES
- 31-44 SIGN PANEL DETAILS
- 45-50 OVERHEAD SIGN STRUCTURE PLANS
- 51-54 BRIDGE MOUNT SIGN STRUCTURE PLANS
- HIGHWAY STANDARDS

STATE OF ILLINOIS
DEPARTMENT OF TRANSPORTATION
DIVISION OF HIGHWAYS

PROPOSED
HIGHWAY PLANS

FAP ROUTE 310 (ILLINOIS 255)
SECTION 60-15SG

SIGNING & ROADSIDE BARRIERS
MADISON COUNTY

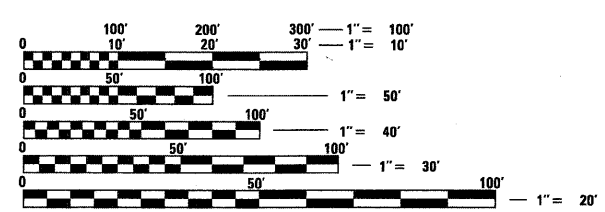
C-98-037-11

IDOT HIGHWAY STANDARDS

000001-06	630201-06	701006-03	720021-02
001001-02	630301-05	701901-01	728001-01
001006	631011-07	720001-01	729001-01
280001-05	635006-03	720006-02	
630001-09	635011-02	720011-01	

TRAFFIC DATA

I-255
ADT = 18,300
SU = 3%
MU = 5%

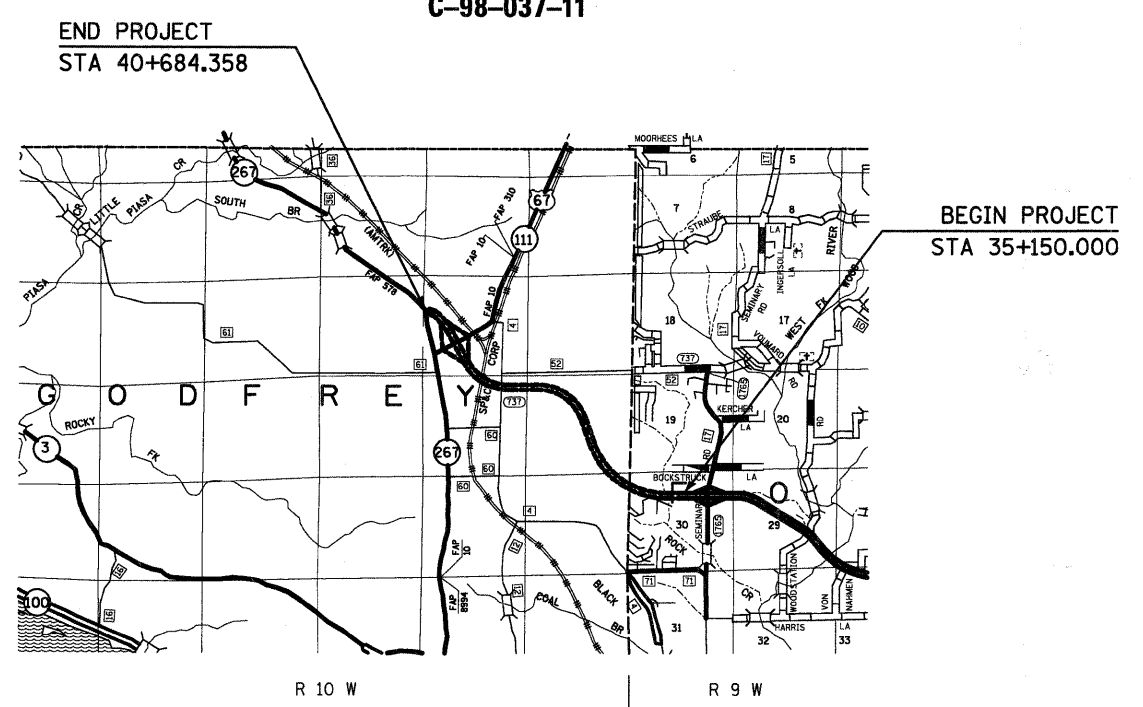


FULL SIZE PLANS HAVE BEEN PREPARED USING STANDARD ENGINEERING SCALES. REDUCED SIZED PLANS WILL NOT CONFORM TO STANDARD SCALES. IN MAKING MEASUREMENTS ON REDUCED PLANS, THE ABOVE SCALES MAY BE USED.

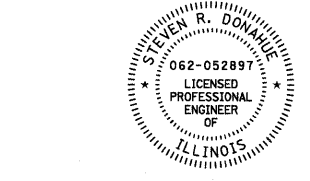
J.U.L.I.E.
JOINT UTILITY LOCATION INFORMATION FOR EXCAVATION
1-800-892-0123
OR 811

PROJECT ENGINEER PATTI LEBEAU, P.E. 618-346-3179
PROJECT MANAGER ARTHUR MUEHLFIELD, P.E. 618-346-3209

CONTRACT NO. 76E76



GROSS LENGTH OF PROJECT = 5,534.358 m (5,534 km)
GROSS LENGTH OF PROJECT = 18,157.343 ft (3,439 mi)
NET LENGTH OF PROJECT = 5,534.358 m (5,534 km)
NET LENGTH OF PROJECT = 18,157.343 ft. (3,439 mi)

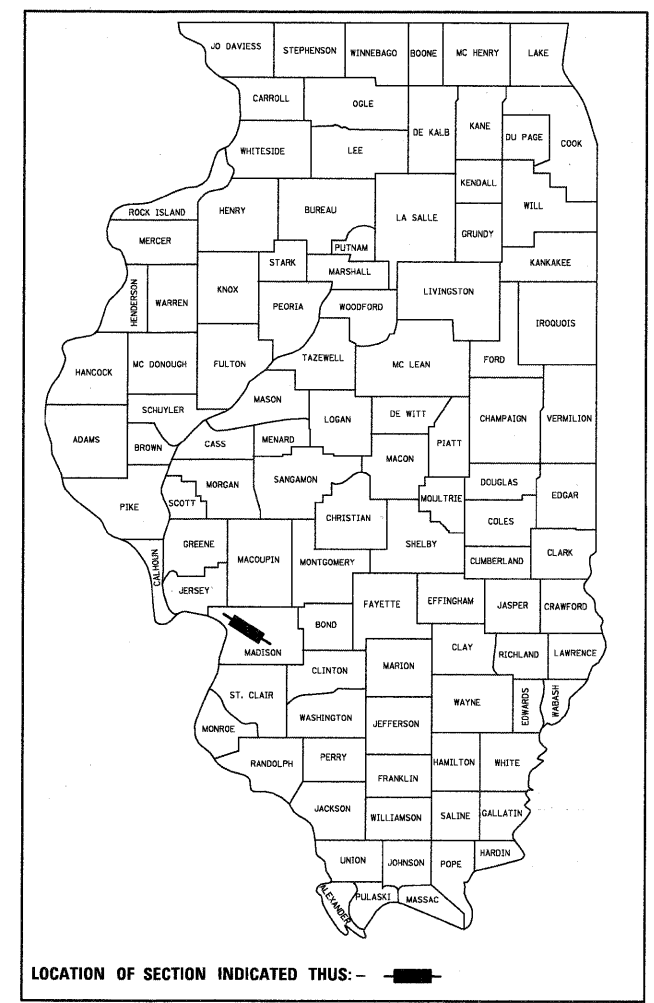


Steven R. Donahue 2/4/11
Steven R. Donahue, P.E.
License Expires 11/30/2011
My seal applies to sheets:
1-2, 6-7



Mary Coombe Bloxdorf 02-01-11
Mary C. Bloxdorf, P.E.
License Expires 11/30/2011
My seal applies to sheets:
3-5, 8-30

D-98-038-92



PLANS PREPARED BY
HORNER & SHIFRIN, INC.
ENGINEERS
www.HornerShifrin.com
640 Pierce Boulevard, Suite 200
O'Fallon, Illinois 62269
Phone: (618) 622-3040
Illinois Professional Design Firm
No. 184-000435
License Expires 4/30/2011

STATE OF ILLINOIS
DEPARTMENT OF TRANSPORTATION
DIVISION OF HIGHWAYS

SUBMITTED February 9 20 11
Mary C. Jamme
DEPUTY DIRECTOR OF HIGHWAYS, REGION 5 ENGINEER
March 25 20 11
Scott E. Stull, P.E.
acting ENGINEER OF DESIGN AND ENVIRONMENT
March 25 20 11
Christine M. Reed
DIRECTOR OF HIGHWAYS, CHIEF ENGINEER

PRINTED BY THE AUTHORITY
OF THE STATE OF ILLINOIS