

STATE OF ILLINOIS
 DEPARTMENT OF TRANSPORTATION
 DIVISION OF HIGHWAYS

**PROPOSED
 HIGHWAY PLANS**

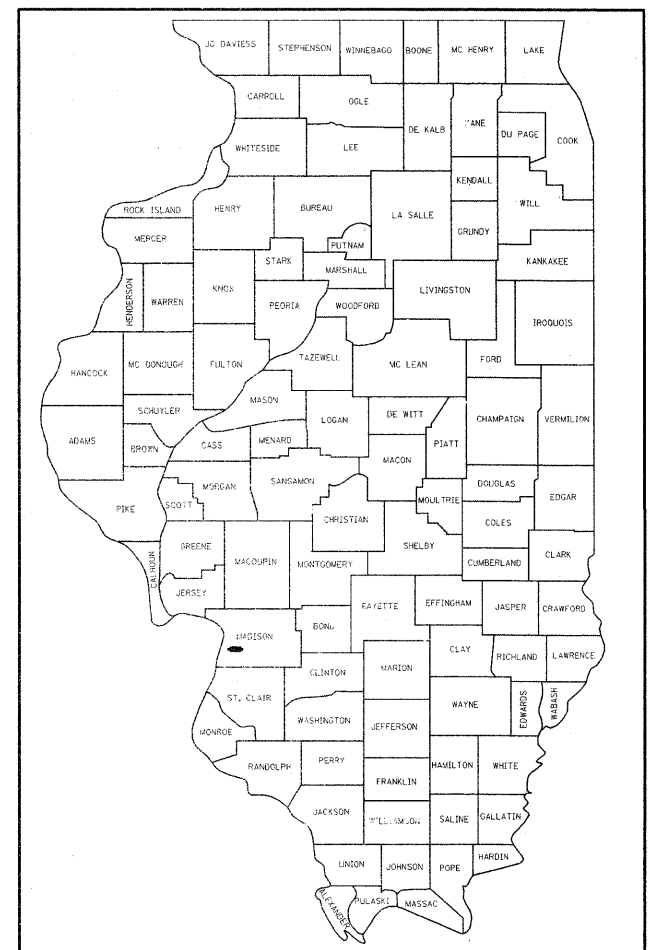
FAI ROUTE 55/70 (I-55/70)
 SECTION Dist 8 ITS 2011-1
 PROJECT ITS-000S(847)
 ITS COMMUNICATION & SURVEILLANCE
 DEVICE INSTALLATION
 MADISON COUNTY

C-98-043-11

END PROJECT
 WEST OF US-40
 STA. 775+00

F.A.I. RTE.	SECTION	COUNTY	TOTAL SHEETS	SHEET NO.
55/70	DIST 8 ITS 2011-1	MADISON	39	1
		ILLINOIS	CONTRACT NO. 76E82	

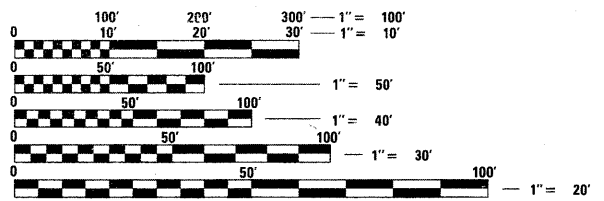
D-98-042-11



LOCATION OF SECTION INDICATED THUS: - [black rectangle] -

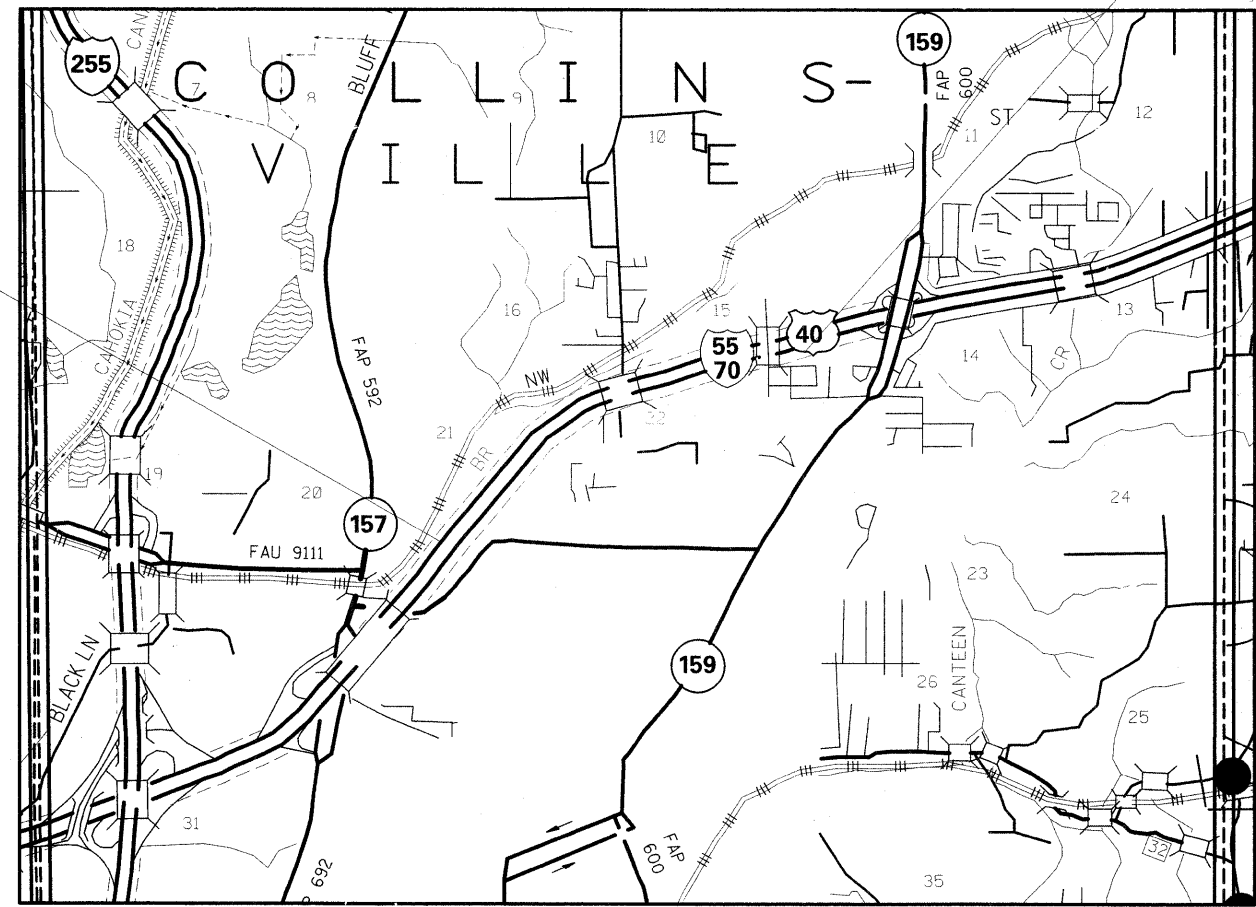
FOR INDEX OF SHEETS, SEE SHEET NO. 2

BEGIN PROJECT
 1.3 MILES EAST OF IL 157
 STA. 579+50



FULL SIZE PLANS HAVE BEEN PREPARED USING STANDARD ENGINEERING SCALES. REDUCED SIZED PLANS WILL NOT CONFORM TO STANDARD SCALES. IN MAKING MEASUREMENTS ON REDUCED PLANS, THE ABOVE SCALES MAY BE USED.

J.U.L.I.E.
 JOINT UTILITY LOCATION INFORMATION FOR EXCAVATION
 1-800-892-0123
 OR 811



GROSS LENGTH = 19,550 FT. FT. = 3.703 MILE
 NET LENGTH = 19,550 FT. FT. = 3.703 MILE

PROJECT ENGINEER TIM PADGETT (618)-346-3325
 PROJECT MANAGER JEFF ABEL (618) 346-3283

CONTRACT NO. 76E82

STATE OF ILLINOIS
 DEPARTMENT OF TRANSPORTATION
 DIVISION OF HIGHWAYS

SUBMITTED 3/2 20 11

Mass Kamis
 DEPUTY DIRECTOR OF HIGHWAYS, REGION ENGINEER

March 25 20 11
Scott E. Stitt, P.E.
 ENGINEER OF DESIGN AND ENVIRONMENT

March 25 20 11
Christine M. Roodla
 DIRECTOR OF HIGHWAYS, CHIEF ENGINEER

**PRINTED BY THE AUTHORITY
 OF THE STATE OF ILLINOIS**