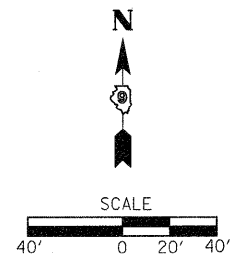
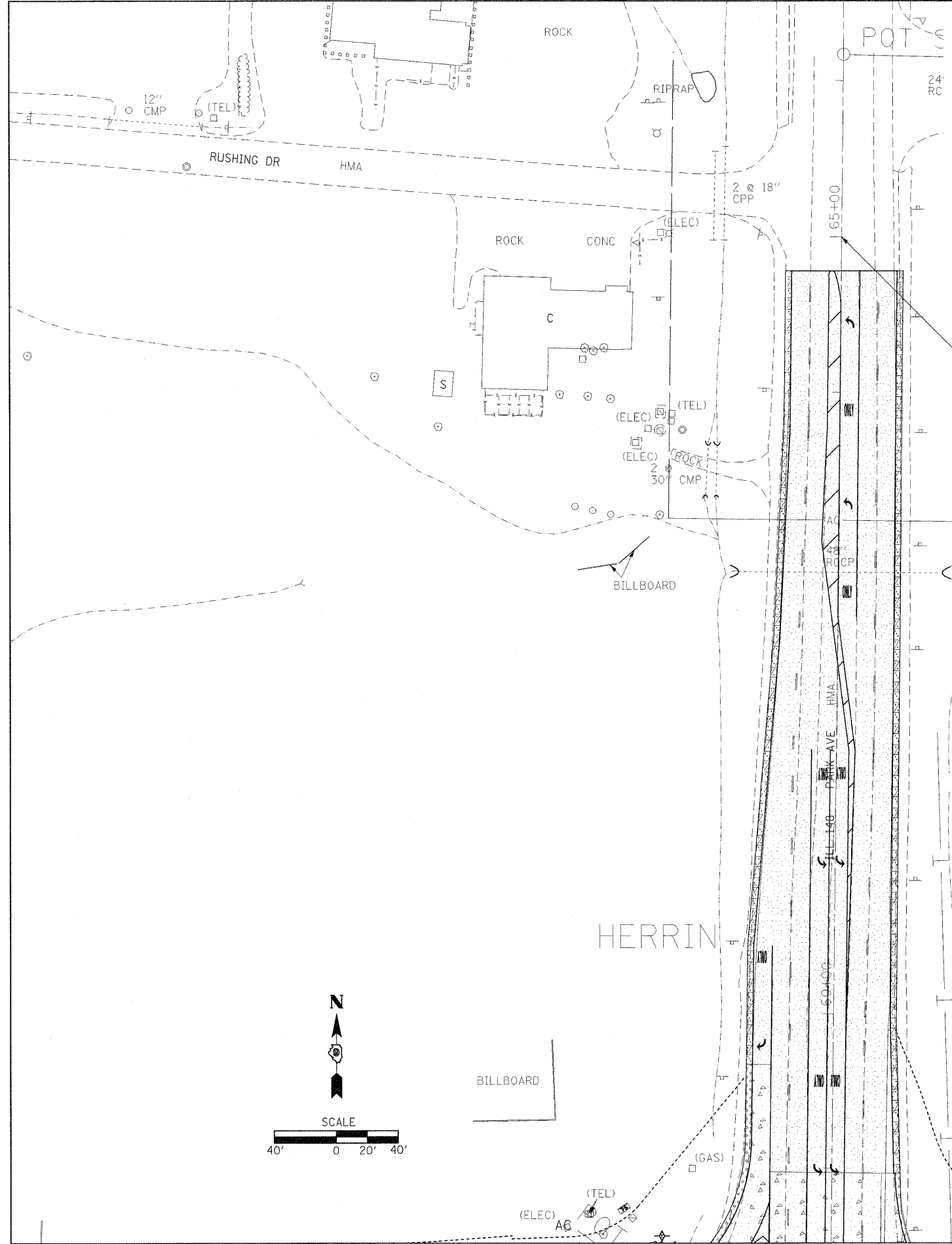


LEGEND

	- HOT-MIX ASPHALT SHOULDERS, 14 3/4"		- POLYMERIZED HOT-MIX ASPHALT SURFACE COURSE, MIX "D", 1 1/2"
	- POLYMERIZED HOT-MIX ASPHALT BINDER COURSE, N105, IL-19.0, 2 3/4"		- POLYMERIZED HOT-MIX ASPHALT SURFACE COURSE, MIX "C", 1 3/4"
	- HOT-MIX ASPHALT BINDER COURSE, IL-19.0, N90, 10 1/2"		- HOT-MIX ASPHALT SHOULDERS, 8"
	- SUB-BASE GRANULAR MATERIAL, TYPE A, 8"		- POLYMERIZED HOT-MIX ASPHALT SURFACE COURSE, MIX D, 1 1/2"
	- PORTLAND CEMENT CONCRETE 9 1/2" (JOINTED)		- HOT-MIX ASPHALT SURFACE COURSE, MIX C, N70, 4"
	- PORTLAND CEMENT SHOULDERS, 9 1/2"		- HOT-MIX ASPHALT SURFACE COURSE, MIX C, N70, 1 1/2"



33+18.04

FILE NAME =	USER NAME = knightsm	DESIGNED -	REVISED -	<b>STATE OF ILLINOIS DEPARTMENT OF TRANSPORTATION</b>	<b>CONSTRUCTION SHEET</b>	F.A.P. RTE.	SECTION	COUNTY	TOTAL SHEETS	SHEET NO.	
ct:\pw\work\p\dot\knightsm\d0135592\7813-sht-eros.dgn	PLOT SCALE = 40,000 / IN.	DRAWN -	REVISED -			331	(I-3,I-2)N-1,TS-2	WILLIAMSON	251	67	
	PLOT DATE = 1/3/2011	CHECKED -	REVISED -			CONTRACT NO. 78133					
		DATE -	REVISED -			ILLINOIS FED. AID PROJECT					
						SCALE:	SHEET NO.	OF	SHEETS	STA.	TO STA.