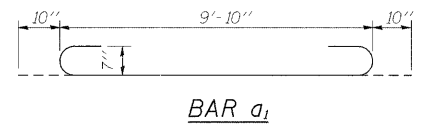
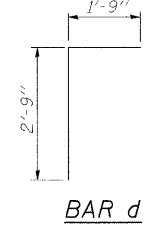
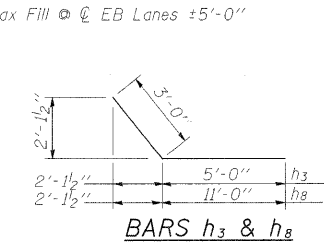
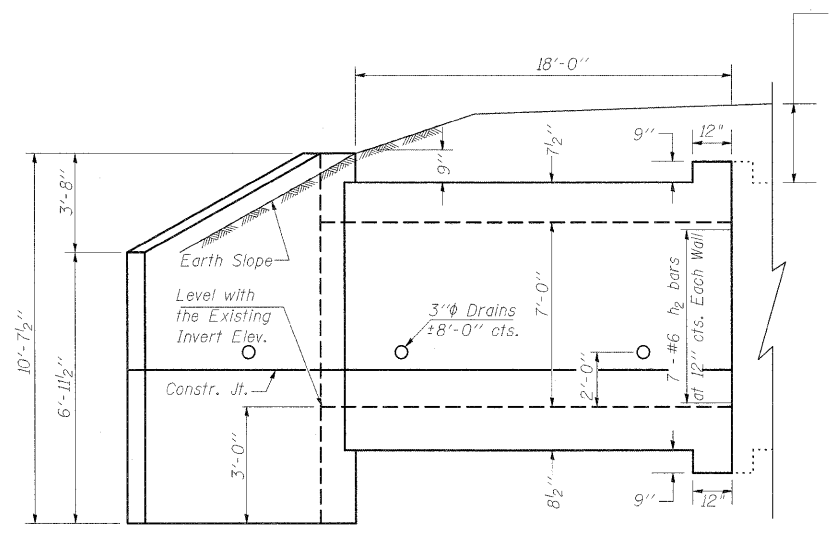
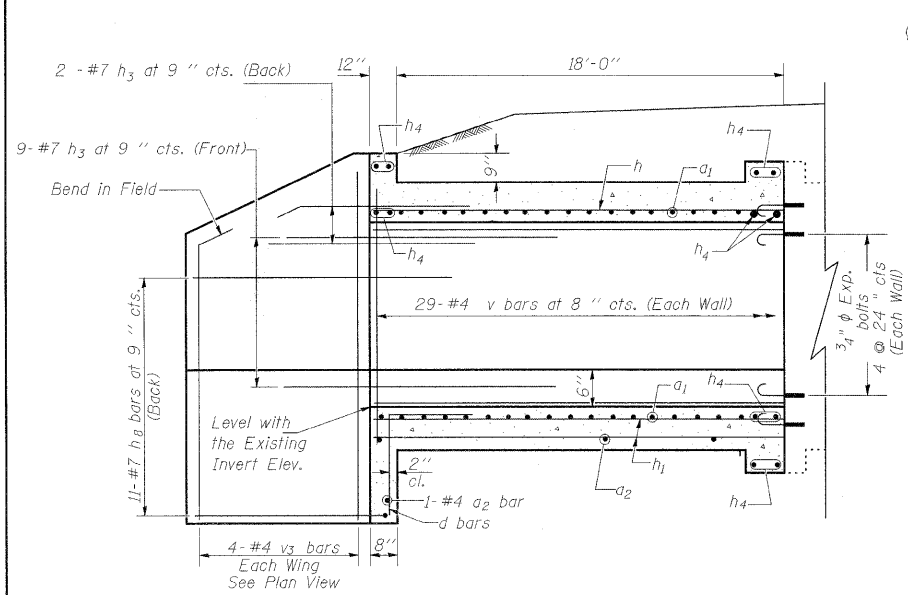
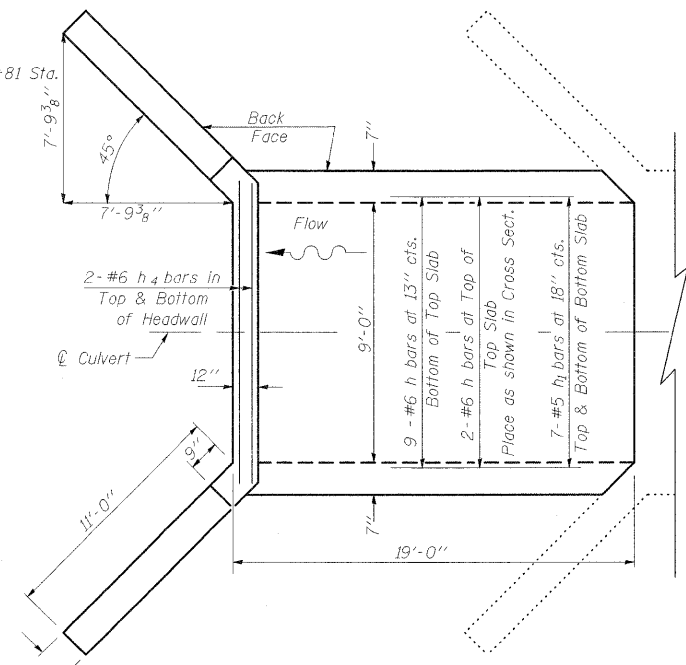
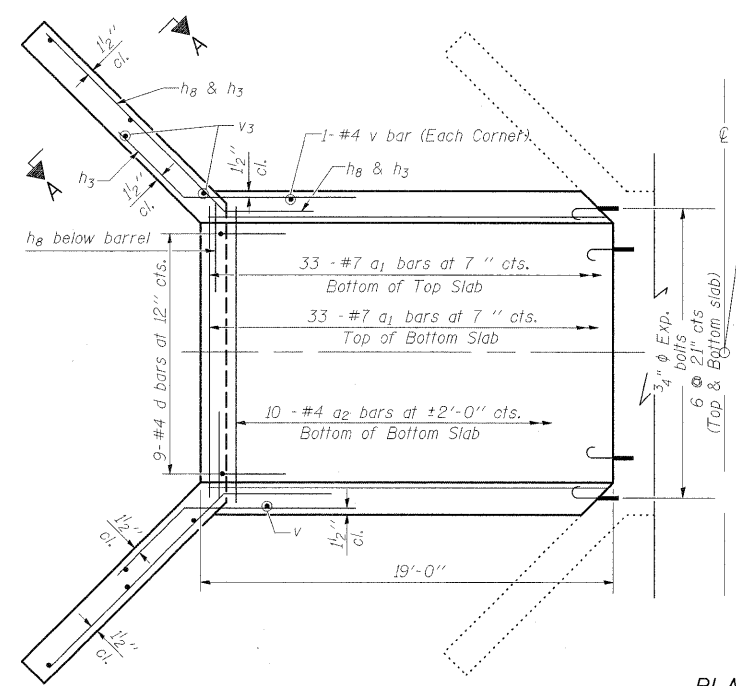


STATE OF ILLINOIS
DEPARTMENT OF TRANSPORTATION



ELEVATION

Dimensions at Rt. L's to Centerline Roadway Looking West



PLAN

NOTES

Reinforcement Bars shall conform to the requirements of AASHTO M-31, M-42 or M-53, Grade 60.
A distance of half the length of the wingwall but not less than six feet of the barrel shall be poured monolithically with the wingwalls.

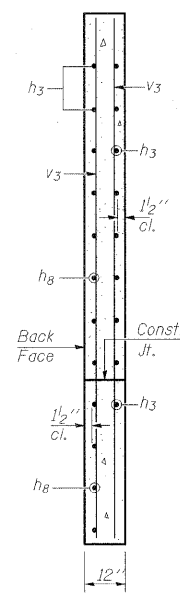
All construction joints shall be bonded.
Expansion bolts shall be 3/4 inch diameter by 12 inch hooked bolts. Hooked bolts shall extend a minimum of 9 inches into new concrete and have a minimum certified proof load of 4,080 lbs.

DESIGN STRESSES
fy = 60,000 psi
fc = 3,500 psi
LOADING HS 20-44

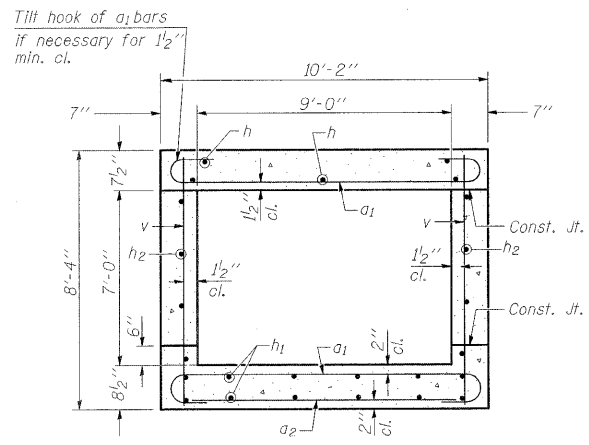
*** BILL OF MATERIAL**

Bar	No.	Size	Length	Shape
a1(E)	66	#7	11'-6"	U
a2(E)	10	#4	9'-6"	—
d(E)	9	#4	4'-6"	L
h(E)	11	#6	18'-8"	—
h1(E)	14	#5	18'-8"	—
h2(E)	14	#6	18'-8"	—
h3(E)	22	#7	8'-0"	—
h4(E)	12	#6	9'-6"	—
h8(E)	22	#7	14'-0"	—
v(E)	60	#4	8'-0"	—
v3(E)	8	#4	10'-3"	—
Concrete Box Culverts	Cu. Yd.	23.9		
Reinforcement Bars	Pound	4630		
Epoxy Coated				
3/4" Expansion bolts	Each	20		

* All Reinforcement Bars shall be Epoxy Coated



SECTION A-A



SECTION THRU BARREL

REVISIONS

DRAWN	2-04
REVISED	5-09 SHT CELL
REVISED	
REVISED	

BASED ON: SSB-H-0 6-1-2000

FILE NAME =	USER NAME = knightsm	DESIGNED -	REVISED -	STATE OF ILLINOIS DEPARTMENT OF TRANSPORTATION	BOX CULVERT EXTENSION STATION ±629+81 9' X 7', SKEW 0° EXTEND 19'- 0''	F.A.P. RTE.	SECTION	COUNTY	TOTAL SHEETS	SHEET NO.	
ci:\paw_work\pawidot\knightsm\d0125501\78133-culvert.dgn		DRAWN -	REVISED -			331	(I-3,I-2)N-1,TS-1	WILLIAMSON	25	107	
PLOT SCALE = 50,0000' / IN.		CHECKED -	REVISED -			CONTRACT NO. 78133					
PLOT DATE = 1/3/2011		DATE -	REVISED -			ILLINOIS FED. AID PROJECT					