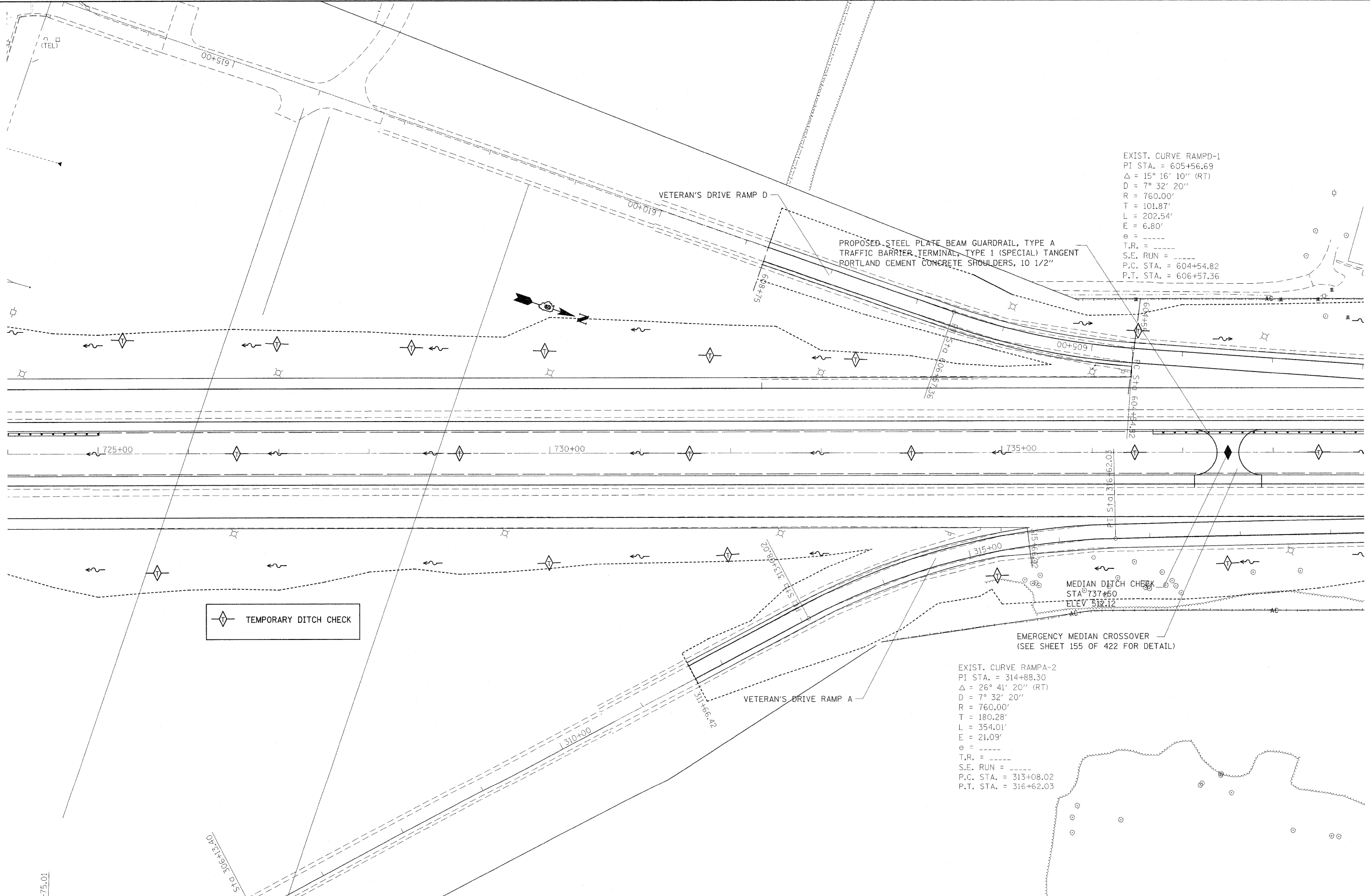


EXIST. CURVE RAMPD-1
 PI STA. = 605+56.69
 $\Delta = 15^\circ 16' 10''$ (RT)
 $D = 7^\circ 32' 20''$
 $R = 760.00'$
 $T = 101.87'$
 $L = 202.54'$
 $E = 6.80'$
 $e =$
 T.R. =
 S.E. RUN =
 P.C. STA. = 604+54.82
 P.T. STA. = 606+57.36

PROPOSED STEEL PLATE BEAM GUARDRAIL, TYPE A
 TRAFFIC BARRIER TERMINAL, TYPE 1 (SPECIAL) TANGENT
 PORTLAND CEMENT CONCRETE SHOULDERS, 10 1/2"



TEMPORARY DITCH CHECK

MEDIAN DITCH CHECK
 STA 737+50
 ELEV 512.12

EMERGENCY MEDIAN CROSSOVER
 (SEE SHEET 155 OF 422 FOR DETAIL)

EXIST. CURVE RAMP A-2
 PI STA. = 314+88.30
 $\Delta = 26^\circ 41' 20''$ (RT)
 $D = 7^\circ 32' 20''$
 $R = 760.00'$
 $T = 180.28'$
 $L = 354.01'$
 $E = 21.09'$
 $e =$
 T.R. =
 S.E. RUN =
 P.C. STA. = 313+08.02
 P.T. STA. = 316+62.03

FILE NAME =
 c:\pwwork\pwwork\rollavr\0169788\78172

USER NAME = rollavr
 sht-pln.dgn
 PLOT SCALE = 50,0000' / IN.
 PLOT DATE = 2/22/2011

DESIGNED -
 DRAWN -
 CHECKED -
 DATE -

REVISED -
 REVISED -
 REVISED -
 REVISED -

STATE OF ILLINOIS
 DEPARTMENT OF TRANSPORTATION

PLAN 157

SCALE: SHEET NO. OF SHEETS STA. TO STA.

F.A.I. RTE.	SECTION	COUNTY	TOTAL SHEETS	SHEET NO.
57		Jefferson	422	109
ILLINOIS FED. AID PROJECT			CONTRACT NO. 78172	