

EAST CURB LINE

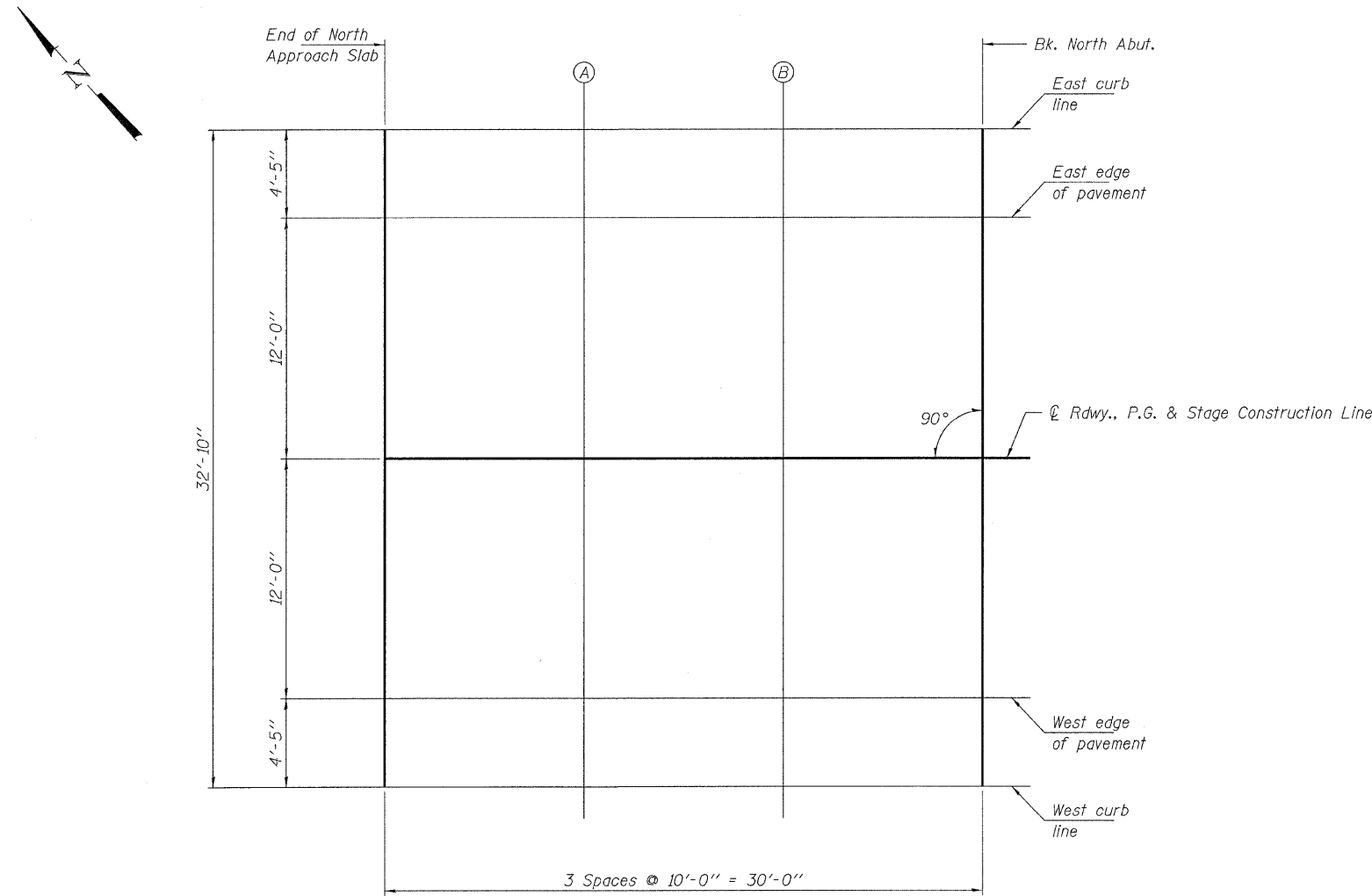
| Location | Station | Offset | Theoretical Grade Elevations |
|-------------------------|-----------|--------|------------------------------|
| End of N. Approach Slab | 807+50.00 | -16.42 | 384.58 |
| A | 807+60.00 | -16.42 | 384.59 |
| B | 807+70.00 | -16.42 | 384.61 |
| Bk. N. Abutment | 807+80.00 | -16.42 | 384.62 |

EAST EDGE OF PAVEMENT

| Location | Station | Offset | Theoretical Grade Elevations |
|-------------------------|-----------|--------|------------------------------|
| End of N. Approach Slab | 807+50.00 | -12.00 | 384.67 |
| A | 807+60.00 | -12.00 | 384.68 |
| B | 807+70.00 | -12.00 | 384.70 |
| Bk. N. Abutment | 807+80.00 | -12.00 | 384.71 |

☉ RDWY., P.G. & STAGE CONSTRUCTION LINE

| Location | Station | Offset | Theoretical Grade Elevations |
|-------------------------|-----------|--------|------------------------------|
| End of N. Approach Slab | 807+50.00 | 0.00 | 384.86 |
| A | 807+60.00 | 0.00 | 384.87 |
| B | 807+70.00 | 0.00 | 384.89 |
| Bk. N. Abutment | 807+80.00 | 0.00 | 384.90 |



NORTH APPROACH SLAB - PLAN

WEST EDGE OF PAVEMENT

| Location | Station | Offset | Theoretical Grade Elevations |
|-------------------------|-----------|--------|------------------------------|
| End of N. Approach Slab | 807+50.00 | 12.00 | 384.67 |
| A | 807+60.00 | 12.00 | 384.68 |
| B | 807+70.00 | 12.00 | 384.70 |
| Bk. N. Abutment | 807+80.00 | 12.00 | 384.71 |

WEST CURB LINE

| Location | Station | Offset | Theoretical Grade Elevations |
|-------------------------|-----------|--------|------------------------------|
| End of N. Approach Slab | 807+50.00 | 16.42 | 384.58 |
| A | 807+60.00 | 16.42 | 384.59 |
| B | 807+70.00 | 16.42 | 384.61 |
| Bk. N. Abutment | 807+80.00 | 16.42 | 384.62 |

| | | | |
|--|----------------------|-------------------|--------------------|
| FILE NAME = 290116-shr-bridge.dgn | USER NAME = | DESIGNED - S.M.S. | REVISED - 10/14/10 |
| HAMPTON, LENZINI AND RENWICK, INC. 3035 STEVENSON DRIVE, SUITE 201 SPRINGFIELD, ILLINOIS 62763 | PLOT SCALE = | CHECKED - A.S.L. | REVISED - 12/10/10 |
| ILLINOIS PROFESSIONAL DESIGN FIRM LS / PE / SE CORP. 184.000399 | PLOT DATE = 1/5/2011 | DRAWN - D.A.B. | REVISED - |
| | | CHECKED - M.D.C. | REVISED - |

**STATE OF ILLINOIS
DEPARTMENT OF TRANSPORTATION**

**TOP OF NORTH APPROACH SLAB ELEVATIONS
STRUCTURE NO. 097-0075**

SHEET NO. 8 OF 24 SHEETS

| | | | | |
|---------------------------|---------|--------|--------------|-----------|
| FAP | SECTION | COUNTY | TOTAL SHEETS | SHEET NO. |
| 328 | 105B-2 | WHITE | 55 | 29 |
| CONTRACT NO. 78188 | | | | |
| ILLINOIS FED. AID PROJECT | | | | |