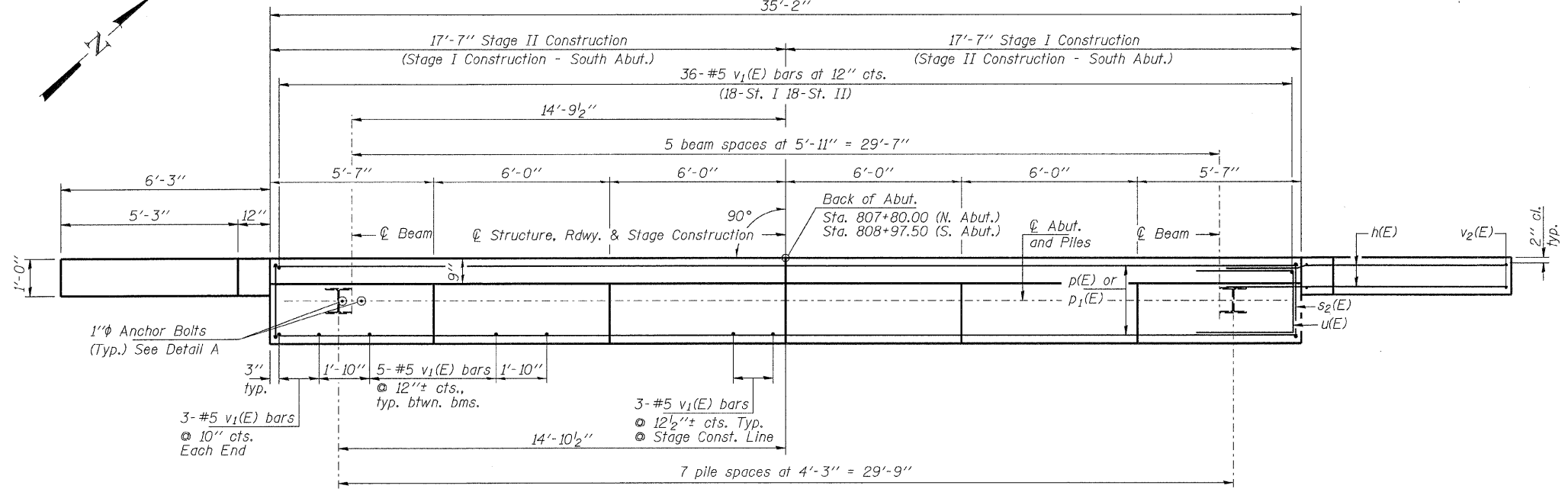


SEC. THRU ABUT.

BILL OF MATERIAL
(2 ABUTMENTS)

Bar	No.	Size	Length	Shape
h(E)	64	#6	10'-0"	—
p(E)	32	#7	17'-3"	—
p1(E)	40	#5	17'-3"	—
s2(E)	72	#5	11'-5"	□
u(E)	16	#6	10'-1"	—
v1(E)	136	#5	4'-4"	—
v2(E)	28	#5	9'-9"	—
Structure Excavation		Cu. Yd.	158	
Concrete Structures		Cu. Yd.	28.0	
Concrete Encasement		Cu. Yd.	8.4	
Reinforcement Bars, Epoxy Coated		Pound	4,810	
Bar Splicers		Each	36	
Furnishing Steel Piles HP14x89		Foot	1,064	
Driving Piles HP14x89		Foot	1,064	
Test Pile Steel HP14x89		Each	1	
Pile Shoes		Each	16	

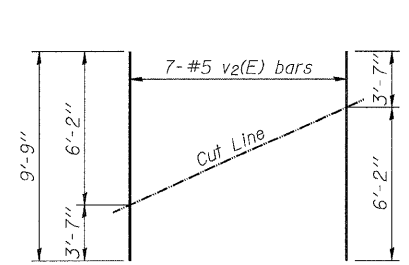
Notes:
 Pour steps monolithically with cap.
 Space reinforcement in cap to miss anchor bolts.
 For details of Bar Splicers, see sheet 20 of 24.
 For details of piles and Concrete Encasement, see sheet 22 of 24.



PLAN

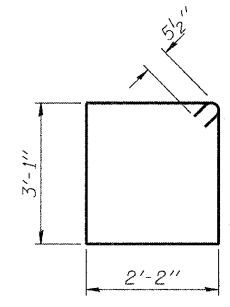
PILE DATA

Type: Steel HP14x89 with Pile Shoes
 Nominal Required Bearing: 705 Kips/pile
 Factored Resistance Available: 387 Kips/pile
 Est. Length: 72' (North Abut.)
 Est. Length: 70' (South Abut.)
 No. Production Piles: 15
 No. Test Piles: 1 (North Abut.)

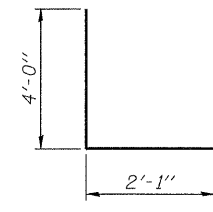


FIELD CUTTING DIAGRAM

Order v2(E) full length. Cut as shown and use remainder of bars in opposite face.



BAR s2(E)



BAR u(E)