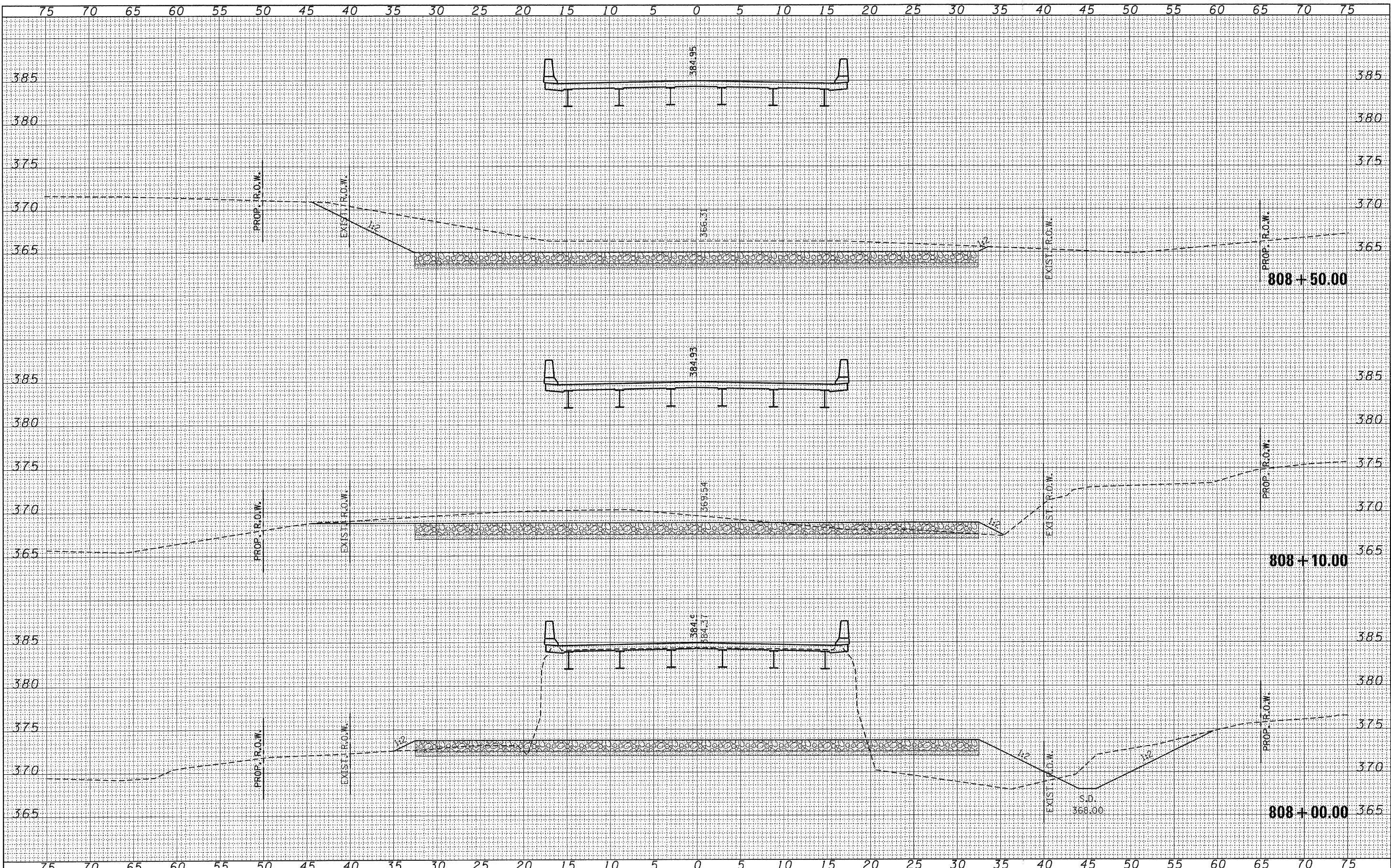


BY \_\_\_\_\_ DATE \_\_\_\_\_  
 SURVEYED \_\_\_\_\_  
 PLOTTED \_\_\_\_\_  
 TEMPLATE \_\_\_\_\_  
 AREAS CHECKED \_\_\_\_\_  
 AREAS CHECKED \_\_\_\_\_  
 ORIGINAL SURVEY NO. \_\_\_\_\_  
 FINAL SURVEY NO. \_\_\_\_\_

BY \_\_\_\_\_ DATE \_\_\_\_\_  
 SURVEYED \_\_\_\_\_  
 PLOTTED \_\_\_\_\_  
 TEMPLATE \_\_\_\_\_  
 AREAS CHECKED \_\_\_\_\_  
 AREAS CHECKED \_\_\_\_\_  
 ORIGINAL SURVEY NO. \_\_\_\_\_  
 FINAL SURVEY NO. \_\_\_\_\_



FILE NAME = 092116-shr-xe.dgn	USER NAME =	DESIGNED - L.F.S.	REVISED -	<b>STATE OF ILLINOIS DEPARTMENT OF TRANSPORTATION</b>	<b>CROSS SECTIONS U.S. ROUTE 45</b>			F.A.P.	SECTION	COUNTY	TOTAL SHEETS	SHEET NO.
HAMPTON, LENZINI AND RENWICK, INC. 3948 STEVENSON DRIVE, SUITE 201 SPRINGFIELD, ILLINOIS 62708 ILLINOIS PROFESSIONAL DESIGN FIRM LS / PE / SE CORP. 184-000889	PLOT SCALE =	DRAWN - T.W.K.	REVISED -		328	105B-2	WHITE	55	50			
	PLOT DATE = 1/5/2011	CHECKED - S.W.M.	REVISED -		SCALE: 5H:5V			SHEET NO. OF SHEETS STA. 808+00.00 TO STA. 808+50.00			FED. ROAD DIST. NO.	ILLINOIS FED. AID PROJECT
		DATE - 11/08/10	REVISED -								CONTRACT NO. 78188	