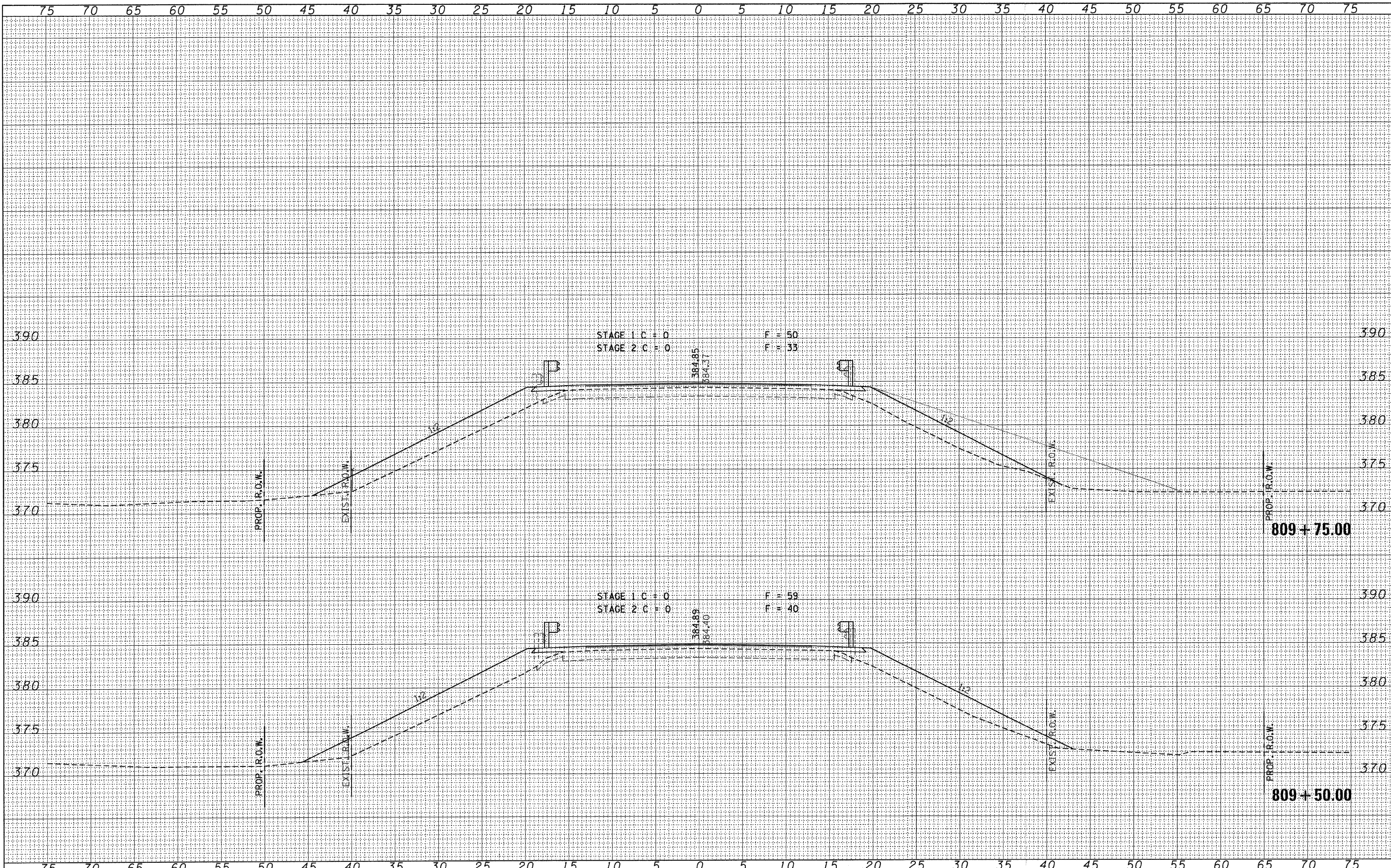


FINAL SURVEY NO.	DATE
SURVEYED	
PLOTTED	
TEMPLATE	
AREAS	
CHECKED	

ORIGINAL SURVEY NO.	DATE
SURVEYED	
PLOTTED	
TEMPLATE	
AREAS	
CHECKED	



FILE NAME = 090116-shr-xs.dgn	USER NAME =	DESIGNED - L.F.S.	REVISED -	<b>STATE OF ILLINOIS DEPARTMENT OF TRANSPORTATION</b>	<b>CROSS SECTIONS U.S. ROUTE 45</b>			F.A.P. 328	SECTION 105B-2	COUNTY WHITE	TOTAL SHEETS 55	SHEET NO. 52
HAMPTON, LENZINI AND RENWICK, INC. 308 STEVENSON DRIVE, SUITE 201 SPRINGFIELD, ILLINOIS 62760	PLOT SCALE =	DRAWN - T.W.K.	REVISED -		SCALE: 5H:5V	SHEET NO. OF SHEETS	STA. 809+50.00 TO STA. 809+75.00	FED. ROAD DIST. NO.	ILLINOIS FED. AID PROJECT	CONTRACT NO. 78188		
ILLINOIS PROFESSIONAL DESIGN FIRM L8 / PE / SE CORP. 184.000392	PLOT DATE = 1/5/2011	CHECKED - S.W.M.	REVISED -									
		DATE - 11/08/10	REVISED -									