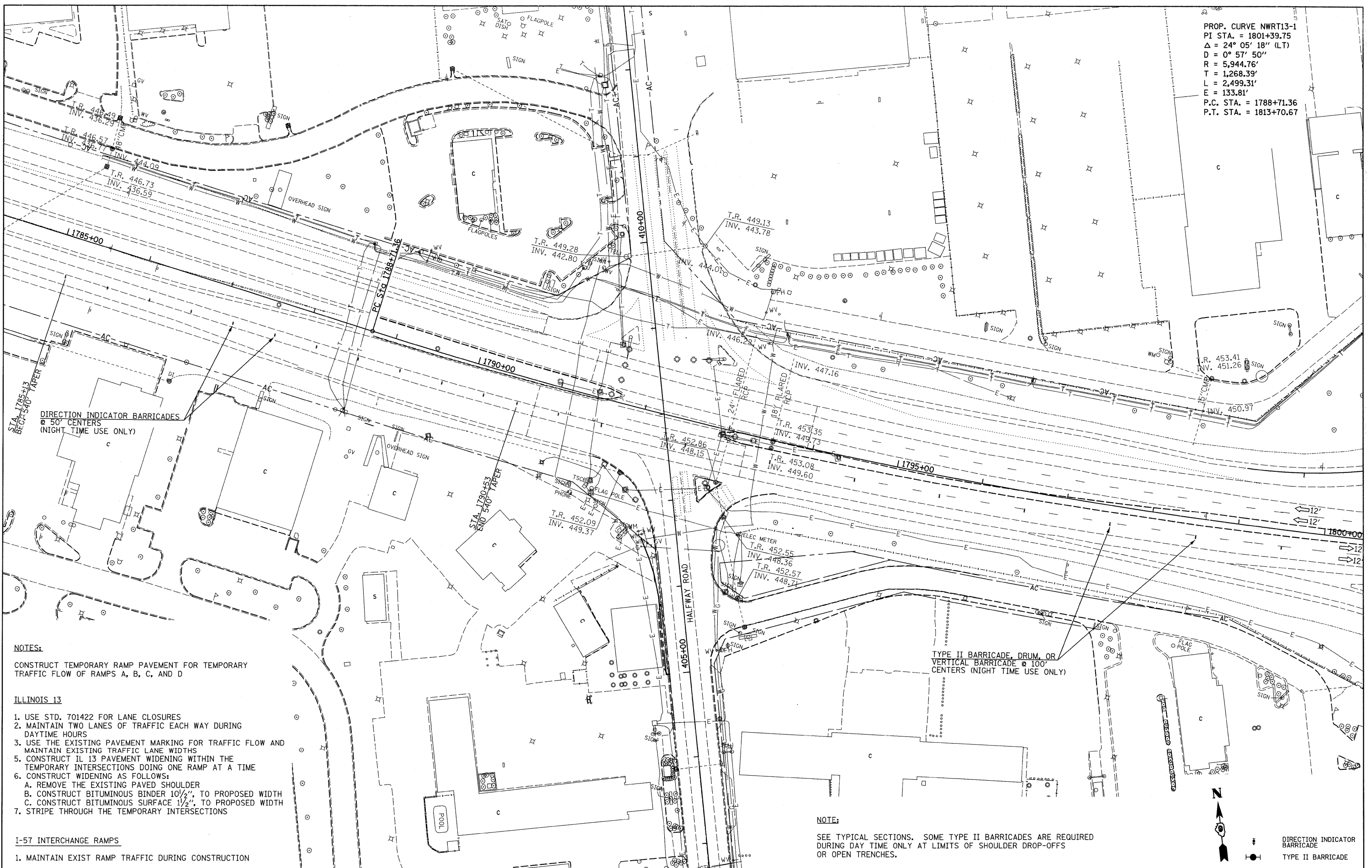


PROP. CURVE NWRT13-1
 PI STA. = 1801+39.75
 $\Delta = 24^\circ 05' 18''$ (LT)
 $D = 0^\circ 57' 50''$
 $R = 5,944.76'$
 $T = 1,268.39'$
 $L = 2,499.31'$
 $E = 133.81'$
 P.C. STA. = 1788+71.36
 P.T. STA. = 1813+70.67



DIRECTION INDICATOR BARRICADES
 @ 50' CENTERS
 (NIGHT TIME USE ONLY)

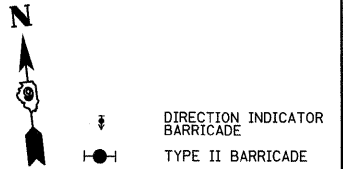
NOTES:
 CONSTRUCT TEMPORARY RAMP PAVEMENT FOR TEMPORARY TRAFFIC FLOW OF RAMPS A, B, C, AND D

- ILLINOIS 13**
- USE STD. 701422 FOR LANE CLOSURES
 - MAINTAIN TWO LANES OF TRAFFIC EACH WAY DURING DAYTIME HOURS
 - USE THE EXISTING PAVEMENT MARKING FOR TRAFFIC FLOW AND MAINTAIN EXISTING TRAFFIC LANE WIDTHS
 - CONSTRUCT IL 13 PAVEMENT WIDENING WITHIN THE TEMPORARY INTERSECTIONS FOLLOWING ONE RAMP AT A TIME
 - CONSTRUCT WIDENING AS FOLLOWS:
 - REMOVE THE EXISTING PAVED SHOULDER
 - CONSTRUCT BITUMINOUS BINDER 10 1/2", TO PROPOSED WIDTH
 - CONSTRUCT BITUMINOUS SURFACE 1 1/2", TO PROPOSED WIDTH
 - STRIPE THROUGH THE TEMPORARY INTERSECTIONS

- I-57 INTERCHANGE RAMPS**
- MAINTAIN EXIST RAMP TRAFFIC DURING CONSTRUCTION

TYPE II BARRICADE, DRUM, OR VERTICAL BARRICADE @ 100' CENTERS (NIGHT TIME USE ONLY)

NOTE:
 SEE TYPICAL SECTIONS. SOME TYPE II BARRICADES ARE REQUIRED DURING DAY TIME ONLY AT LIMITS OF SHOULDER DROP-OFFS OR OPEN TRENCHES.



FILE NAME =	USER NAME = #USER#	DESIGNED -	REVISED -
#FILE#		DRAWN -	REVISED -
	PLOT SCALE = #SCALE#	CHECKED -	REVISED -
	PLOT DATE = #DATE#	DATE -	REVISED -

**STATE OF ILLINOIS
 DEPARTMENT OF TRANSPORTATION**

**PLAN VIEW & TRAFFIC CONTROL
 ILLINOIS ROUTE 13**

SCALE: 1" = 50' SHEET NO. 1 OF 5 SHEETS STA. 1785+00 TO STA. 1800+00

F.A.P. RTE.	SECTION	COUNTY	TOTAL SHEETS	SHEET NO.
331	(1X-1A-1,R-6,N-6,TS-5	WILLIAMSON	52	19
CONTRACT NO. 78223			[ILLINOIS] FED. AID PROJECT	