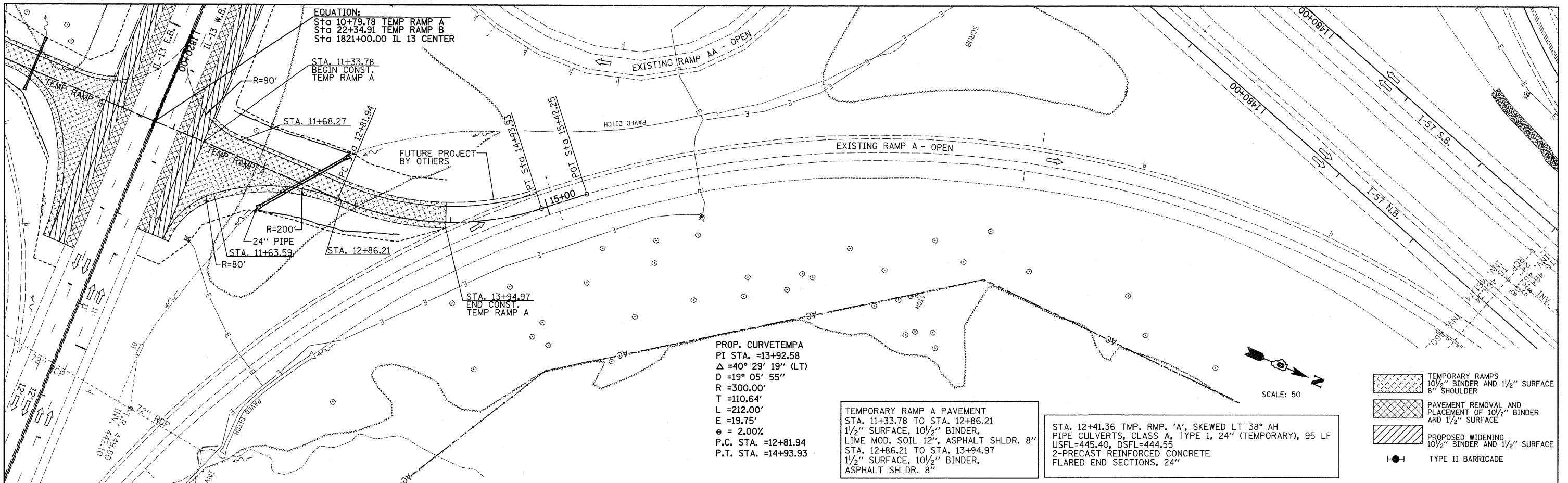


PLAN  
 SURVEYED  
 ALIGNMENT CHECKED  
 RT. OF WAY CHECKED  
 DATE FILE NAME

PROFILE  
 SURVEYED  
 GRADES CHECKED  
 B.M. NOTED  
 STRUCTURE NOTATIONS CHFD  
 DATE

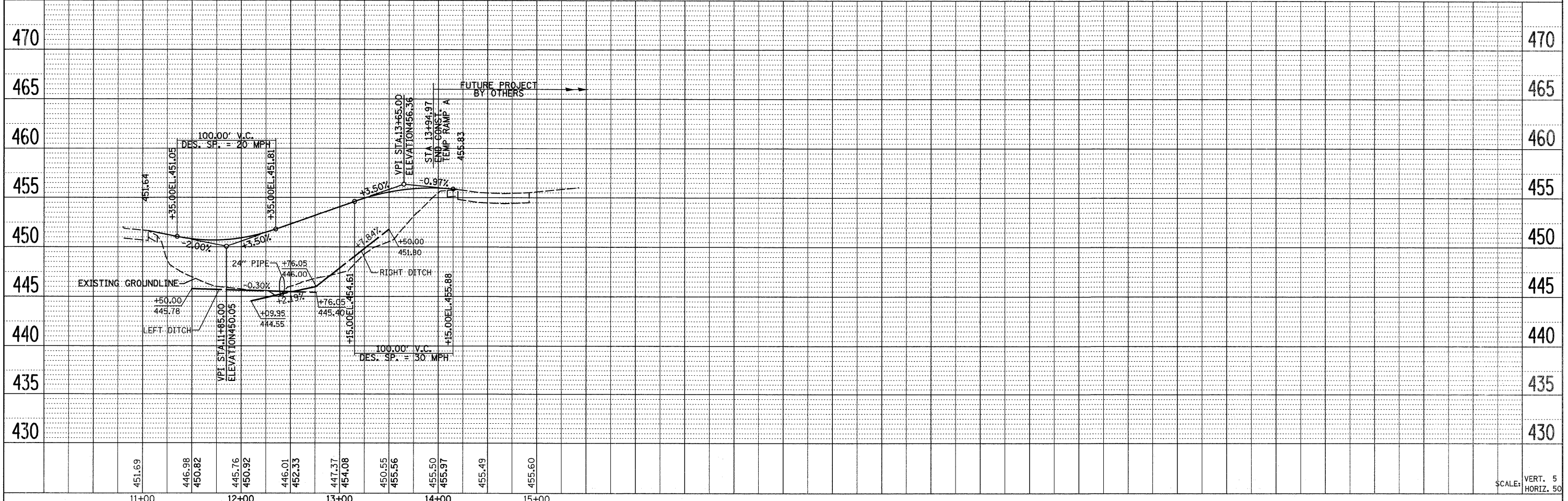


PROP. CURVETEMPA  
 PI STA. =13+92.58  
 $\Delta = 40^\circ 29' 19''$  (LT)  
 $D = 19^\circ 05' 55''$   
 $R = 300.00'$   
 $T = 110.64'$   
 $L = 212.00'$   
 $E = 19.75'$   
 $e = 2.00\%$   
 P.C. STA. =12+81.94  
 P.T. STA. =14+93.93

TEMPORARY RAMP A PAVEMENT  
 STA. 11+33.78 TO STA. 12+86.21  
 1 1/2" SURFACE, 10 1/2" BINDER,  
 LIME MOD. SOIL 12", ASPHALT SHLDR. 8"

STA. 12+41.36 TMP. RMP. 'A', SKEWED LT 38° AH  
 PIPE CULVERTS, CLASS A, TYPE 1, 24" (TEMPORARY), 95 LF  
 USFL=445.40, DSFL=444.55  
 2-PRECAST REINFORCED CONCRETE  
 FLARED END SECTIONS, 24"

- TEMPORARY RAMPS  
10 1/2" BINDER AND 1 1/2" SURFACE  
8" SHOULDER
- PAVEMENT REMOVAL AND  
PLACEMENT OF 10 1/2" BINDER  
AND 1 1/2" SURFACE
- PROPOSED WIDENING  
10 1/2" BINDER AND 1 1/2" SURFACE
- TYPE II BARRICADE



FILE NAME =	USER NAME = *USER*	DESIGNED -	REVISED -
*FILE#*		DRAWN -	REVISED -
	PLOT SCALE = *SCALE*	CHECKED -	REVISED -
	PLOT DATE = *DATE*	DATE -	REVISED -

STATE OF ILLINOIS  
 DEPARTMENT OF TRANSPORTATION

TEMPORARY RAMP A  
 PLAN & PROFILE

F.A.P. RTE.	SECTION	COUNTY	TOTAL SHEETS	SHEET NO.
331	(1X-1A-1,R-6,N-6,TS-5	WILLIAMSON	52	24
CONTRACT NO. 78223				
ILLINOIS FED. AID PROJECT				

SCALE: SHEET NO. 1 OF 1 SHEETS STA. 10+79.78 TO STA. 15+42.25

SCALE: VERT. 5  
 HORIZ. 50