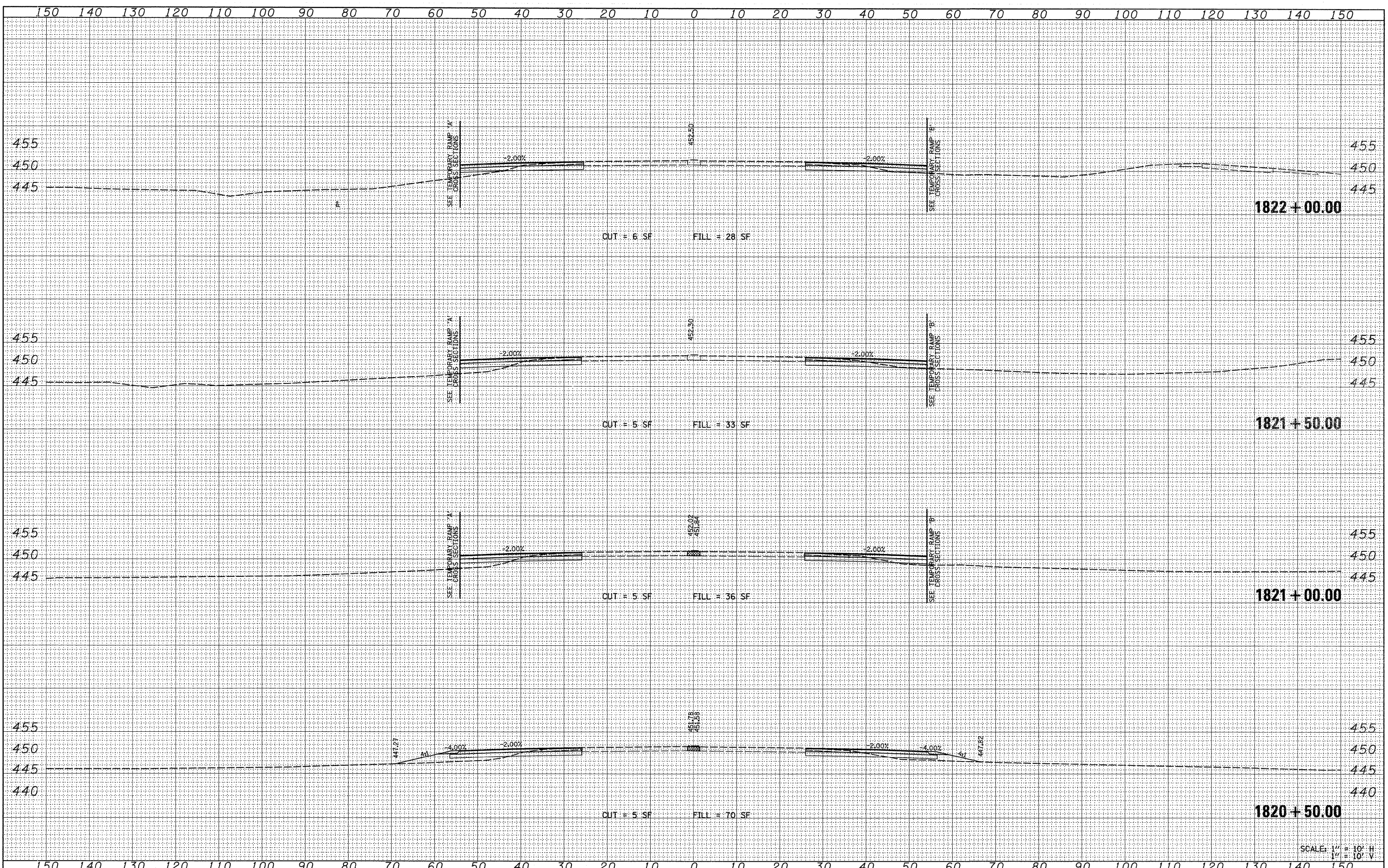


DATE	
BY	
SURVEYED	
PLOTTED	
NOTE BOOK	
AREAS CHECKED	
NO.	

DATE	
BY	
SURVEYED	
PLOTTED	
NOTE BOOK	
AREAS CHECKED	
NO.	



SCALE: 1" = 10' H
1" = 10' V

FILE NAME =	USER NAME = *USER*	DESIGNED -	REVISED -	STATE OF ILLINOIS DEPARTMENT OF TRANSPORTATION	CROSS SECTIONS ILLINOIS ROUTE 13		F.A.P. RTE. 331	SECTION (1X-1A-1,R-6,N-6,TS-5)	COUNTY WILLIAMSON	TOTAL SHEETS 52	SHEET NO. 41	
FILEL		DRAWN -	REVISED -		SCALE: 1" = 10'	SHEET NO. 6 OF 7 SHEETS	STA. 1820+50.00 TO STA. 1822+00.00	CONTRACT NO. 78223				
		PLOT SCALE = *SCALE*	REVISED -		FED. ROAD DIST. NO. ILLINOIS FED. AID PROJECT							
		PLOT DATE = *DATE*	REVISED -									