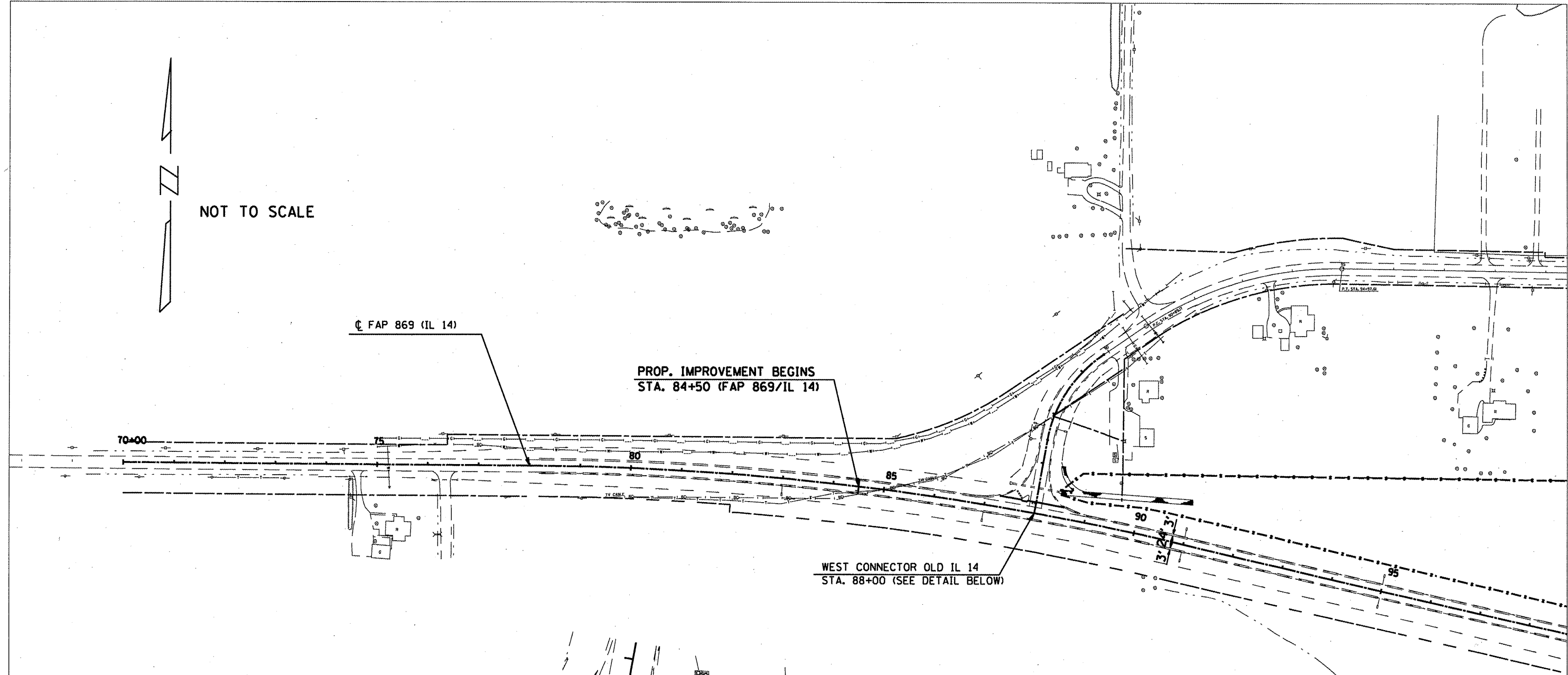




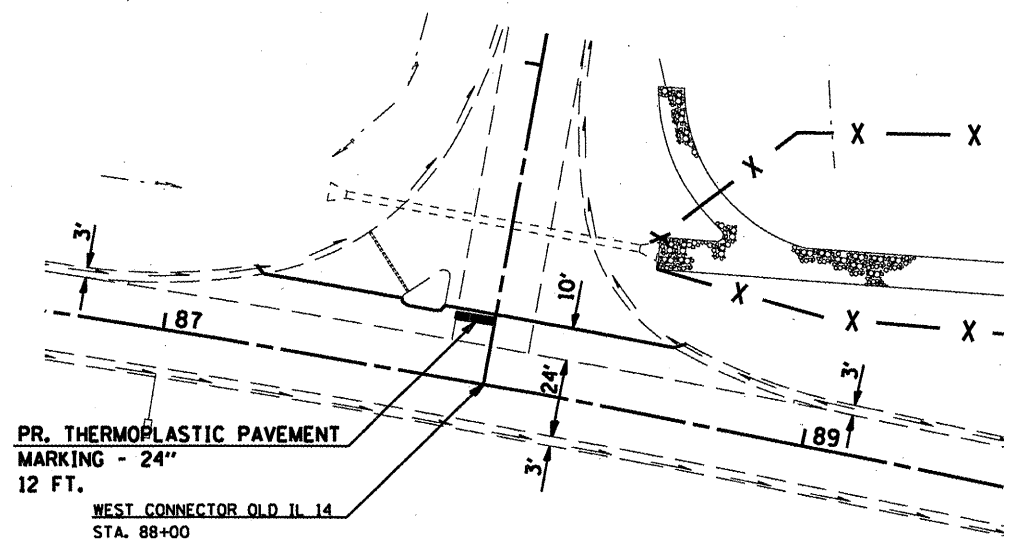
NOT TO SCALE



CL FAP 869 (IL 14)

PROP. IMPROVEMENT BEGINS
STA. 84+50 (FAP 869/IL 14)

WEST CONNECTOR OLD IL 14
STA. 88+00 (SEE DETAIL BELOW)



PR. THERMOPLASTIC PAVEMENT
MARKING - 24"
12 FT.

WEST CONNECTOR OLD IL 14
STA. 88+00

**DETAIL OF INTERSECTION
FAP 869 (IL 14) AND WEST CONNECTOR
FOR OLD RTE. 14**

FILE NAME =	USER NAME = maoardkr	DESIGNED -	REVISED -	STATE OF ILLINOIS DEPARTMENT OF TRANSPORTATION	PLAN LAYOUT -- STA. 84±50 -- TO STA. 99±00		F.A.P. RTE.	SECTION	COUNTY	TOTAL SHEETS	SHEET NO.	
at\p\work\p\dot\maoardkr\d0239288\78227-sht-plan.dgn		DRAWN -	REVISED -		SCALE: _____	SHEET NO. _____ OF _____ SHEETS	STA. _____ TO STA. _____	-869	09_PAVT_EBESEBY_2011-2	EBBY	11	8
	PLOT SCALE = 1/99.9996 "/> IN.	CHECKED -	REVISED -					CONTRACT NO. 78227				
	PLOT DATE = 1/13/2011	DATE -	REVISED -					ILLINOIS FED. AID PROJECT				