

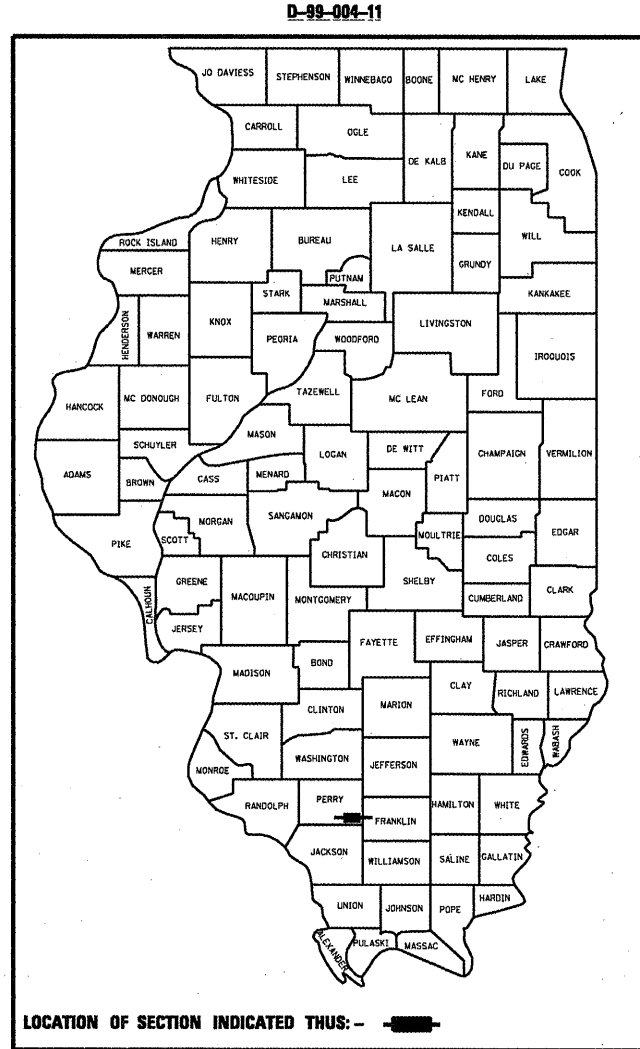
STATE OF ILLINOIS
 DEPARTMENT OF TRANSPORTATION
 DIVISION OF HIGHWAYS

**PROPOSED
 HIGHWAY PLANS**

FAP ROUTE 869 (IL 14)
 SECTION D9 PAVT PRESERVATION 2011-2

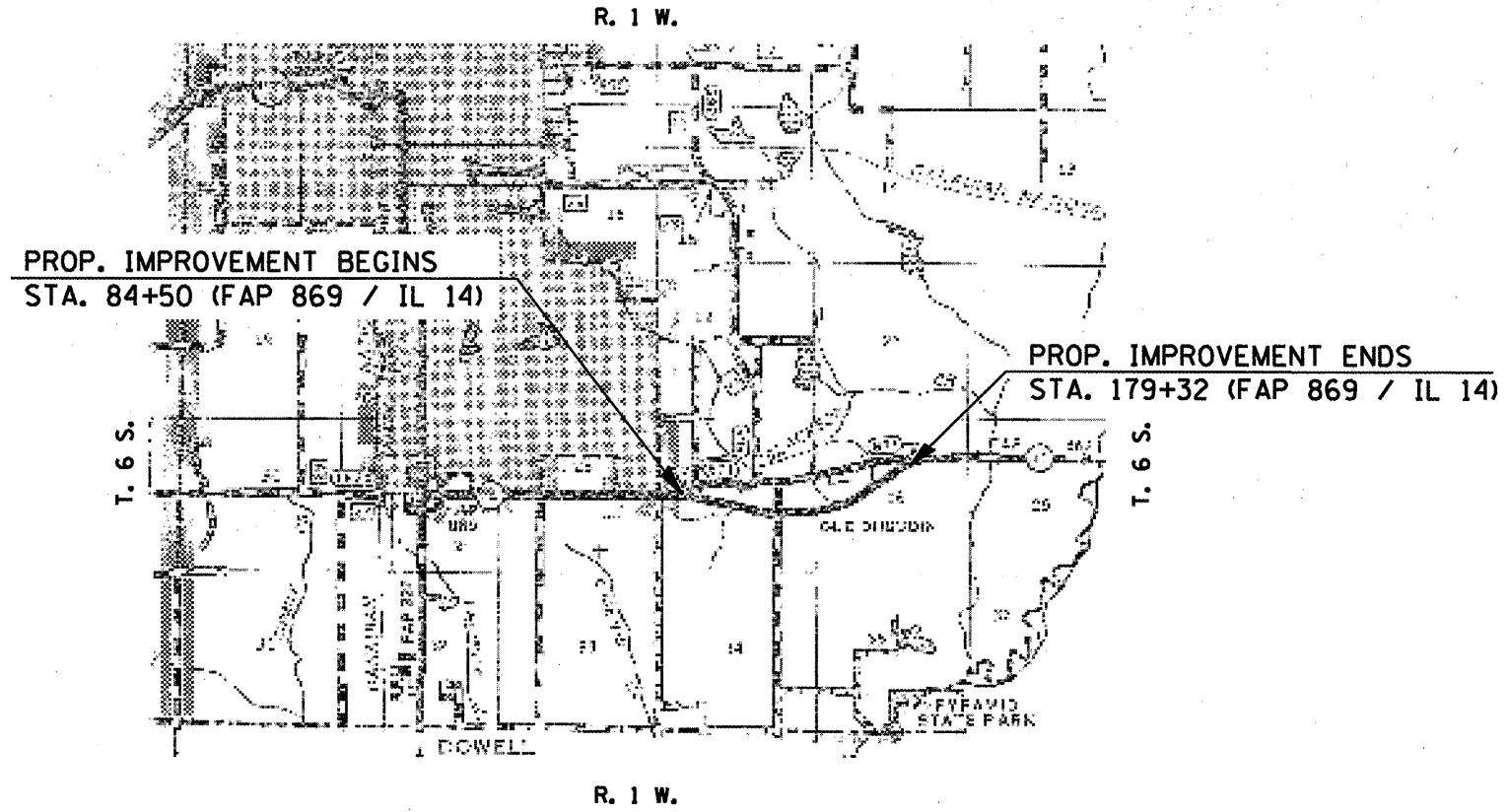
PERRY COUNTY
 C-99-006-11

F.A.P. RTE.	SECTION	COUNTY	TOTAL SHEETS	SHEET NO.
869	D9 PAVT PRESERV 2011-2	PERRY	11	1
ILLINOIS		CONTRACT NO. 78227		

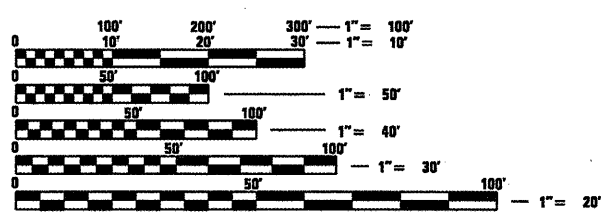


FOR INDEX OF SHEETS, SEE SHEET NO. 3

ADT (2009) 3300
 MU = 250
 SU = 175
 TRUCK = 12.8%



TOWNSHIP: DUQUOIN



FULL SIZE PLANS HAVE BEEN PREPARED USING STANDARD ENGINEERING SCALES. REDUCED SIZED PLANS WILL NOT CONFORM TO STANDARD SCALES. IN MAKING MEASUREMENTS ON REDUCED PLANS, THE ABOVE SCALES MAY BE USED.

J.U.L.I.E.
 JOINT UTILITY LOCATION INFORMATION FOR EXCAVATION
 1-800-892-0123
 OR 811

PROJECT ENGINEER CHARLES STEIN - (618) 351-5210
 PROJECT MANAGER KATHI MCCORD - (618) 351-5319

GROSS LENGTH = 9482 FT. = 1.79 MILE
 NET LENGTH = 9482 FT. = 1.79 MILE

CONTRACT NO. 78227

STATE OF ILLINOIS
 DEPARTMENT OF TRANSPORTATION
 DIVISION OF HIGHWAYS

SUBMITTED Jan 31 2011

Mary C. Zarnia
 DEPUTY DIRECTOR OF HIGHWAYS, REGION ENGINEER

March 26 2011
Scott E. Stitt, P.E.
 ASSISTING ENGINEER OF DESIGN AND ENVIRONMENT

March 25 2011
Christine M. Reed
 DIRECTOR OF HIGHWAYS, CHIEF ENGINEER

**PRINTED BY THE AUTHORITY
 OF THE STATE OF ILLINOIS**

Prepared By: Joe Zambonino
DISTRICT STUDIES & PLANS ENGINEER

Examined By: John S. Gray
DISTRICT LAND ACQUISITION ENGINEER

Examined By: Carrie Nuber
DISTRICT PROGRAM DEVELOPMENT ENGINEER

Examined By: Victor M. Kelly
DISTRICT OPERATIONS ENGINEER

Examined By: K. R. L.
DISTRICT CONSTRUCTION ENGINEER

Examined By: Bruce W. Puckler
DISTRICT MATERIALS ENGINEER

Examined By: K. R. L.
DISTRICT PROJECT IMPLEMENTATION ENGINEER

~~Examined By:~~
~~ASSISTANT REGIONAL ENGINEER~~

Approved By: Mary C. Lomic
DEPUTY DIRECTOR OF HIGHWAYS, REGION ENGINEER

Jan 31 2011
DATE

FILE NAME =	USER NAME = mcoordkr	DESIGNED -	REVISED -
c:\pwwork\pwwork\mcoordkr\ad0239288\782	27-shr-plan.dgn	DRAWN -	REVISED -
	PLOT SCALE = 100.0000' / IN.	CHECKED -	REVISED -
	PLOT DATE = 1/13/2011	DATE -	REVISED -

**STATE OF ILLINOIS
DEPARTMENT OF TRANSPORTATION**

-----SIGNATURE BLOCK-----

SCALE: _____ SHEET NO. _____ OF _____ SHEETS STA. _____ TO STA. _____

F.A.P. RTE.	SECTION	COUNTY	TOTAL SHEETS	SHEET NO.
869	D9_PAVT_PBESEBY_2011-2	PERBY	11	2
CONTRACT NO. 78227			ILLINOIS FED. AID PROJECT	

INDEX OF SHEETS

SHEET NO.	DESCRIPTION
1	COVER SHEET
2	SIGNATURE BLOCK
3	INDEX OF SHEETS; HIGHWAY STANDARDS; STRUCTURE RATINGS; GENERAL NOTES
4	TYPICAL SECTION
5	SUMMARY OF QUANTITIES
6	SCHEDULES: RESURFACING; THERMOPLASTIC PAVEMENT MARKING
7	LOCATION MAP FAP 869 / IL 14
8 - 11	PLAN SHEETS

HIGHWAY STANDARDS

- 701306-03
- 701311-03
- 701901-01
- 780001-02
- 781001-03

GENERAL NOTES

THE AGGREGATE TO BE USED IN THE MICRO-SURFACING SHALL BE TYPE II APPLIED AT 16 LB/SQ YD PER PASS.

BITUMINOUS MATERIAL (PRIME COAT) SHALL BE APPLIED PRIOR TO PLACING THE FIRST PASS OF MICRO-SURFACING AT A RATE OF 0.05 - 0.10 GAL/SQ. YD.

THE QUANTITY OF SHORT TERM PAVEMENT MARKING SHOWN IN THE PLANS WAS BASED ON ONE APPLICATION EACH FOR 1 LAYER OF THE PRIME COAT AND 1 LAYER OF SURFACE TREATMENT.

PRIOR TO PLACEMENT OF THE FINAL PAVEMENT MARKINGS THE RESIDENT ENGINEER SHOULD CONTACT THE BUREAU OF OPERATIONS AND ARRANGE FOR INSPECTION AND APPROVAL OF THE PAVEMENT MARKING LAYOUT.

THE CONTRACTOR SHALL PRESERVE EXISTING STAMPED STATIONING.

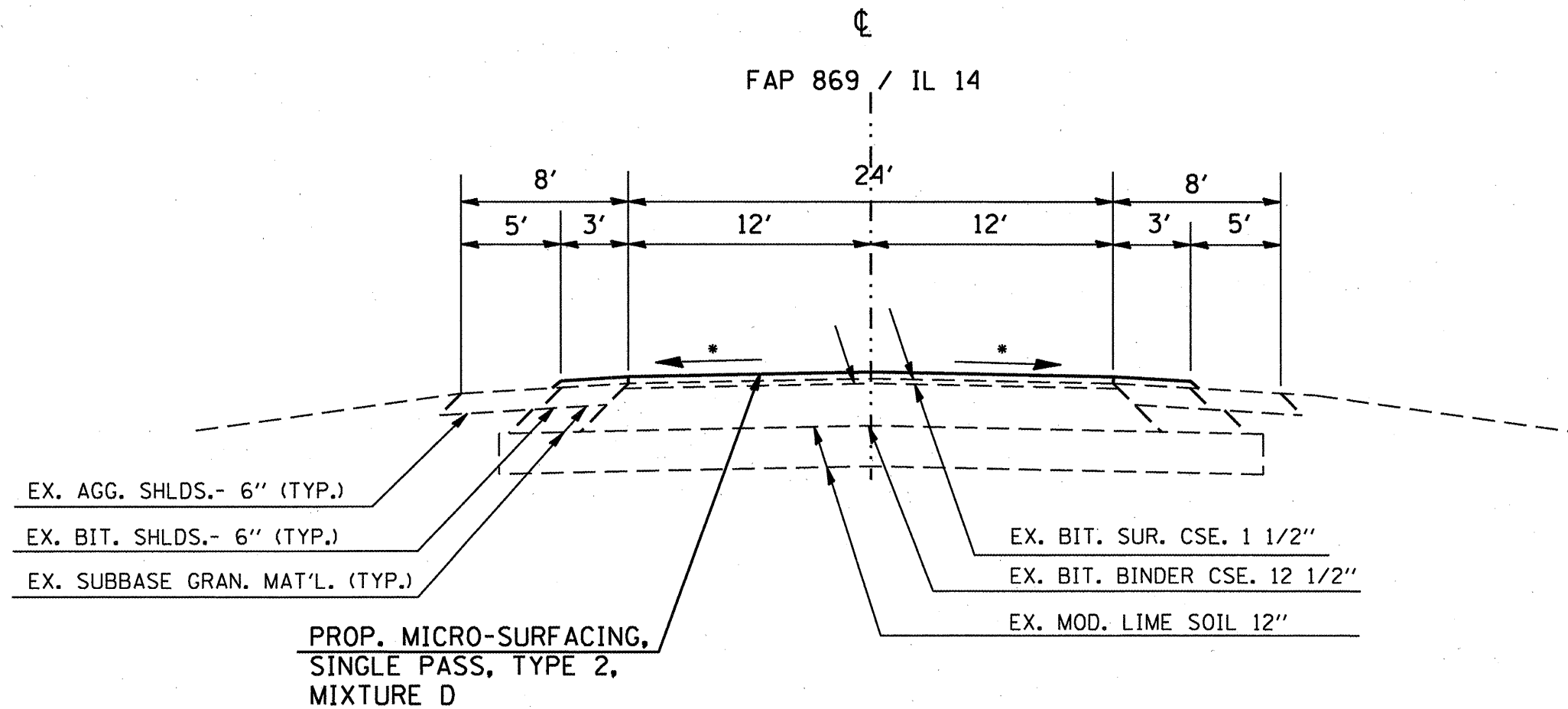
THE CONTRACTOR SHOULD FOLLOW THE EXISTING HOT-MIX LAYOUT AS CLOSELY AS POSSIBLE. EACH INDIVIDUAL LANE SHOULD BE DONE EDGE TO EDGE IN ONE PASS. SHOULDERS SHALL BE DONE SEPARATELY.

THE FRICTION AGGREGATE SHALL BE MIXTURE D.

STRUCTURE RATINGS

STRUCTURE NO.	INV. RATING	OPER. RATING	SUFF. RATING
FAP 869 (IL 14) - PERRY COUNTY			
073-7020	NA	NA	100
073-7021	NA	NA	100

TYPICAL SECTION



TO BE USED:
 STA. 84+50 TO STA. 179+32

*MATCH EXISTING SLOPE.

FILE NAME =	USER NAME = mcoordkr	DESIGNED -	REVISED -	STATE OF ILLINOIS DEPARTMENT OF TRANSPORTATION	TYPICAL SECTION	F.A.P. RTE. =	SECTION	COUNTY	TOTAL SHEETS	SHEET NO.
c:\pw\work\pwwork\mcoordkr\d0239288\78227-sh-t-plen.dgn	PLOT SCALE = 100.0000' / IN.	DRAWN -	REVISED -			869	09_PAVT_PBESEBY_2011-2	PEBBY	11	4
PLOT DATE = 2/3/2011	DATE -	CHECKED -	REVISED -		SCALE: _____ SHEET NO. ____ OF ____ SHEETS STA. _____ TO STA. _____	CONTRACT NO. 70227 ILLINOIS FED. AID PROJECT				

SUMMARY OF QUANTITIES

FAP 869 (IL 14)
WESTBOUND LANES

RURAL
100% STATE
MICROSURFACING
PERRY
0005

CODE NUMBER	CONSTRUCTION TYPE CODE ITEM DESCRIPTION	UNIT	QUANTITY
X0326218	FIBER-MODIFIED ASPHALT CRACK SEALING	FOOT	38006
Z0063804	MICRO-SURFACING, SINGLE PASS, TYPE II, MIXTURE D	SQ YD	32057
40600100	BITUMINOUS MATERIALS (PRIME COAT)	GALLON	2885.1
67100100	MOBILIZATION	L SUM	1.0
70100460	TRAFFIC CONTROL AND PROTECTION, STANDARD 701306	L SUM	1.0
70300100	SHORT TERM PAVEMENT MARKING	FOOT	1896
70300220	TEMPORARY PAVEMENT MARKING- LINE 4"	FOOT	20931
70300280	TEMPORARY PAVEMENT MARKING- LINE 24"	FOOT	48
70301000	WORK ZONE PAVEMENT MARKING REMOVAL	SQ FT	1033
* 78000200	THERMOPLASTIC PAVEMENT MARKING - LINE 4"	FOOT	20931
* 78000650	THERMOPLASTIC PAVEMENT MARKING - LINE 24"	FOOT	48
* 78100100	RAISED REFLECTIVE PAVEMENT MARKER	EACH	120
78300100	PAVEMENT MARKING REMOVAL	SQ FT	6955
78300200	RAISED REFLECTIVE PAVEMENT MARKER REMOVAL	EACH	120
	* SPECIALTY ITEM		

RESURFACING SCHEDULE FAP 869 (IL 14)

LOCATION - STATION TO STATION				LENGTH	PAVEMENT WIDTH	PAVEMENT AREA	SHOULDER WIDTH		MICRO-SURF., SINGLE PASS, TY. 2, MIX. D SHOULDER AREA		MICRO-SURF., SINGLE PASS, TY. 2, MIX. D PAVEMENT AREA	BIT. MATLS. (PR. CT.) (SEE NOTE 2)	FIBER-MOD. ASPHALT CR. SEAL (SEE NOTE 1)
				FOR INFORMATIONAL PURPOSE ONLY			LEFT	RIGHT	LEFT	RIGHT			
				(FT)	(FT)	(SQ YD)	(FT)	(FT)	(SQ YD)	(SQ YD)			
FAP 869 (IL 14) Perry Co.													
	84+50	TO	179+32	9482	24.0	25285					25285	2275.7	18,964
Lt.	84+50	TO	87+27	277			3.0		92			8.3	277
Lt.	88+00			161		210				210		18.9	161
Lt.	88+56	TO	116+40	2784			3.0		928			83.5	2,784
Lt.	116+91			81		90				90		8.1	81
Lt.	117+25	TO	168+78	5153			3.0		1718			154.6	5,153
Lt.	169+50			163		191				191		17.2	163
Lt.	170+06	TO	179+32	926			3.0		309			27.8	926
Rt.	84+50	TO	116+57	3207				3.0		1069		96.2	3,207
Rt.	116+91			77		94				94		8.4	77
Rt.	117+19	TO	179+32	6213				3.0		2071		186.4	6,213
SUB-TOTALS									3047	3140	25870		
TOTALS										32,057		2885.1	38,006

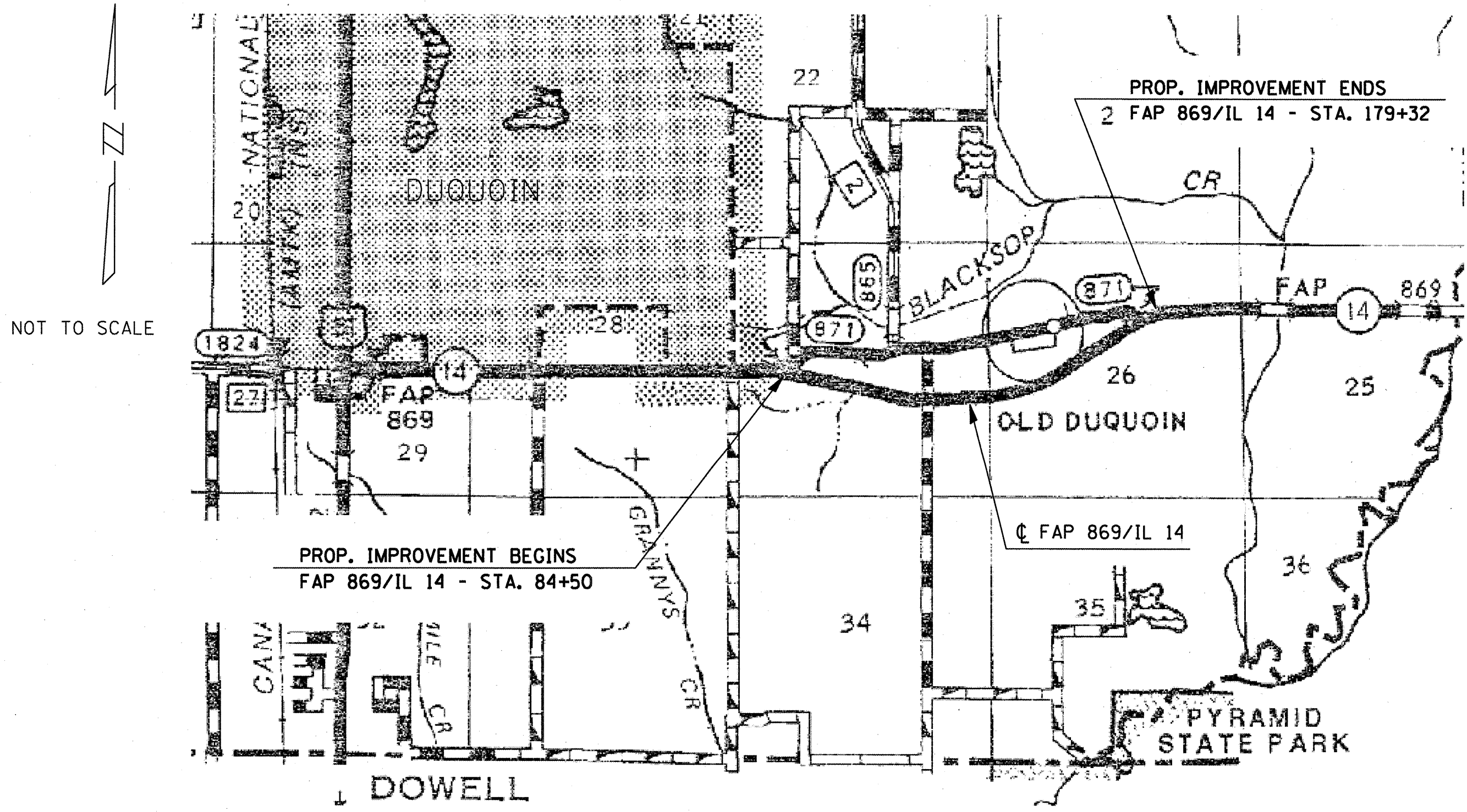
Note 1: Fiber-Modified Asphalt Crack Seal is calculated using 1 lb. of material per 2.8 lineal foot. Use 1 strip each for each lane and shoulder on IL 14 through the length of the project, unless otherwise noted on plans.

Note 2: Bituminous Materials (Prime Coat) quantity includes shoulder and pavement areas.

PAVEMENT MARKING SCHEDULE

STATION TO STATION				THPL PAVEMENT MARKING		TEMPORARY		SHORT TERM PVT MARKING
				4 INCH WHITE (EDGE LINE)	24 INCH WHITE (STOP BAR)	4 INCH (SKIP-DASH)	24 INCH (STOP BAR)	
				FOOT	FOOT	FOOT	FOOT	
FAP 869 (IL 14) PERRY COUNTY								
STA. 84+50 TO STA. 179+32								
	84+50.0	TO	179+32.0	2,371		2,371		1,896
LT	84+50.0	TO	87+27.0	277		277		
LT	88+00.0				12		12	
LT	88+56.0	TO	116+40.0	2,784		2,784		
LT	116+91.0				12		12	
RT	116+91.0				12		12	
LT	117+25.0	TO	168+78.0	5,153		5,153		
LT	169+50.0				12		12	
LT	170+06.0	TO	179+32.0	926		926		
RT	84+50.0	TO	116+57.0	3,207		3,207		
RT	117+19.0	TO	179+32.0	6,213		6,213		
TOTALS				20,931	48	20,931	48	1,896

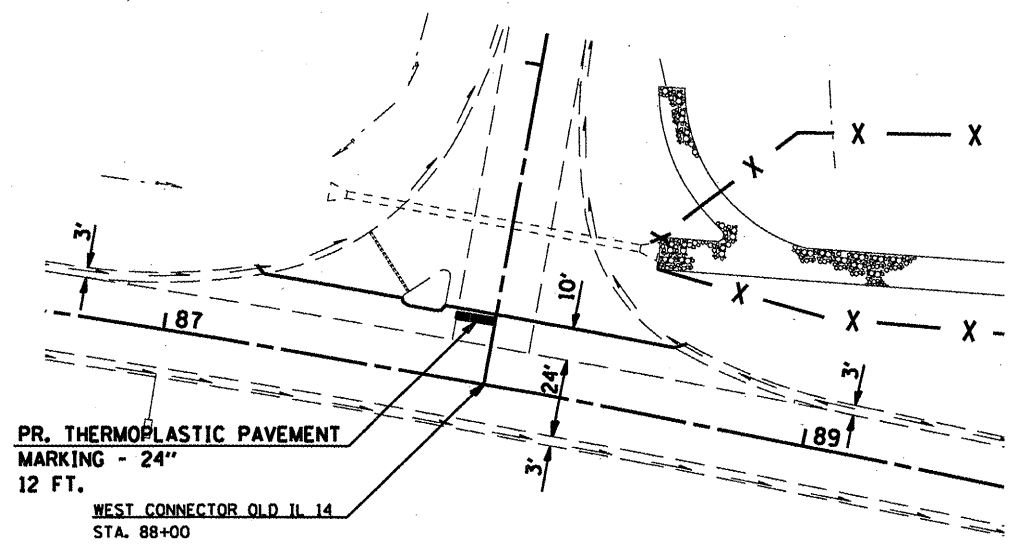
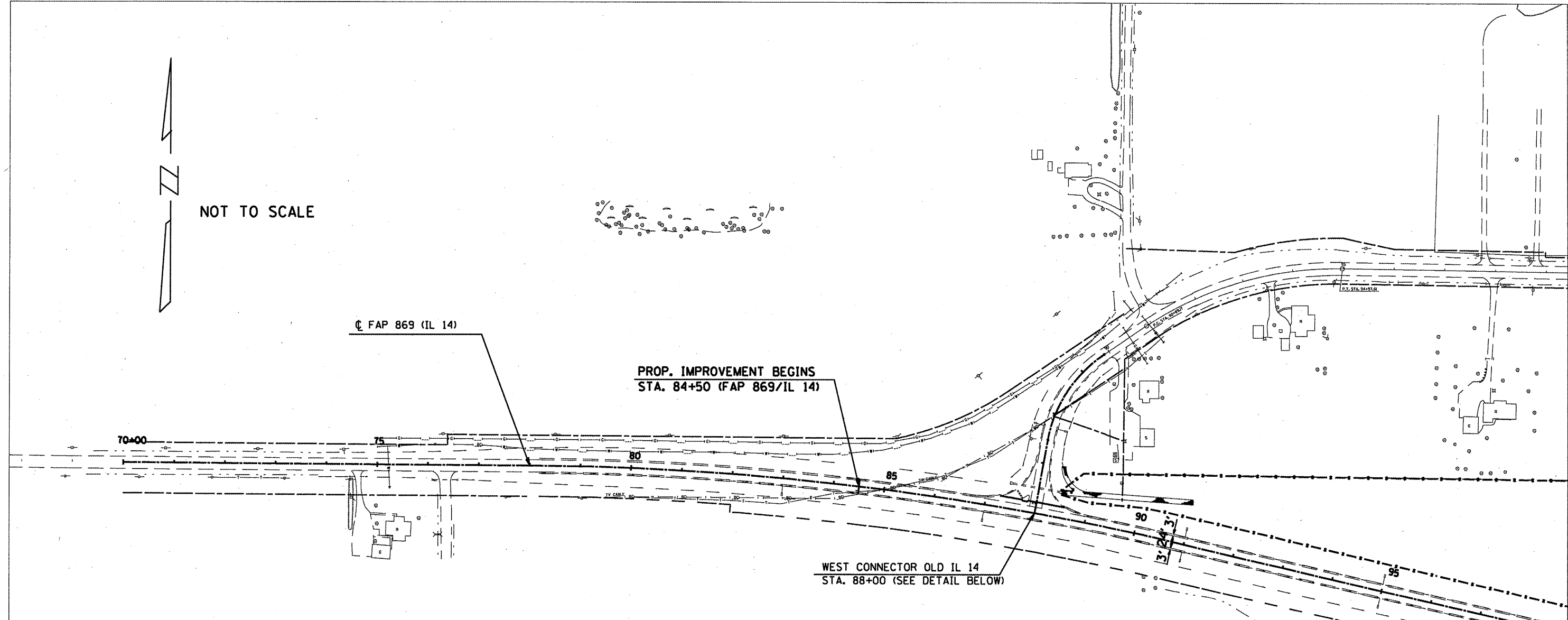
LOCATION MAP
 FAP 869 / IL 14
 NEAR OLD DUQUOIN



FILE NAME =	USER NAME = mcoordkr	DESIGNED -	REVISED -	STATE OF ILLINOIS DEPARTMENT OF TRANSPORTATION	FAP 869/IL 14 LOCATION MAP		F.A.P. -	SECTION	COUNTY	TOTAL	SHEET	
ct:\pwwork\pwwdot\mcoordkr\d0239288\78227-shr-plot.dgn	PLOT SCALE = 100.0000' / IN.	DRAWN -	REVISED -		SCALE: _____	SHEET NO. _____ OF _____ SHEETS	STA. _____ TO STA. _____	869	09_P&VI_PBESEBY_2011-2	PEBBY	11	7
PLOT DATE = 1/13/2011	DATE -	CHECKED -	REVISED -					CONTRACT NO. 78227				
								ILLINOIS FED. AID PROJECT				

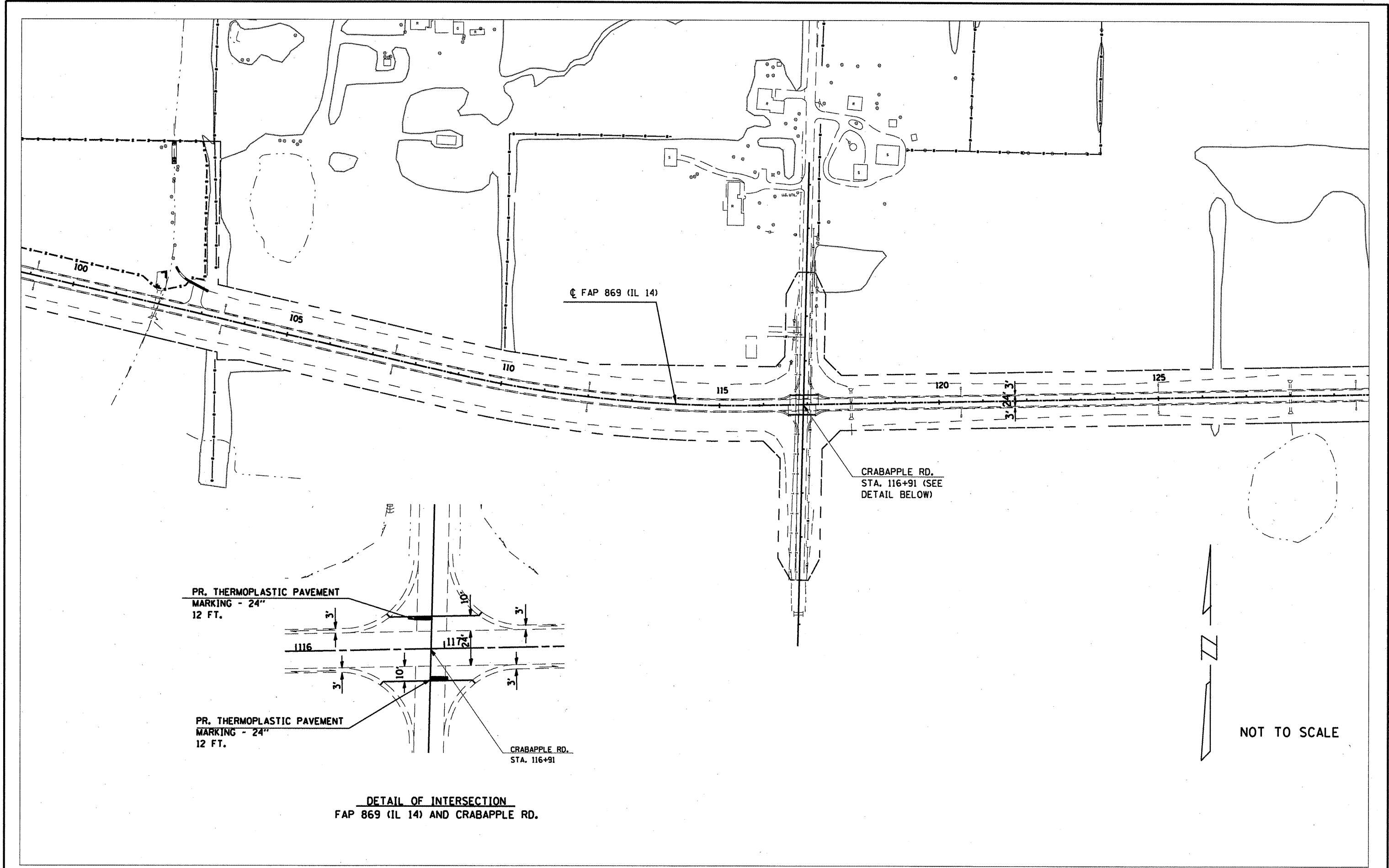


NOT TO SCALE



DETAIL OF INTERSECTION
FAP 869 (IL 14) AND WEST CONNECTOR
FOR OLD RTE. 14

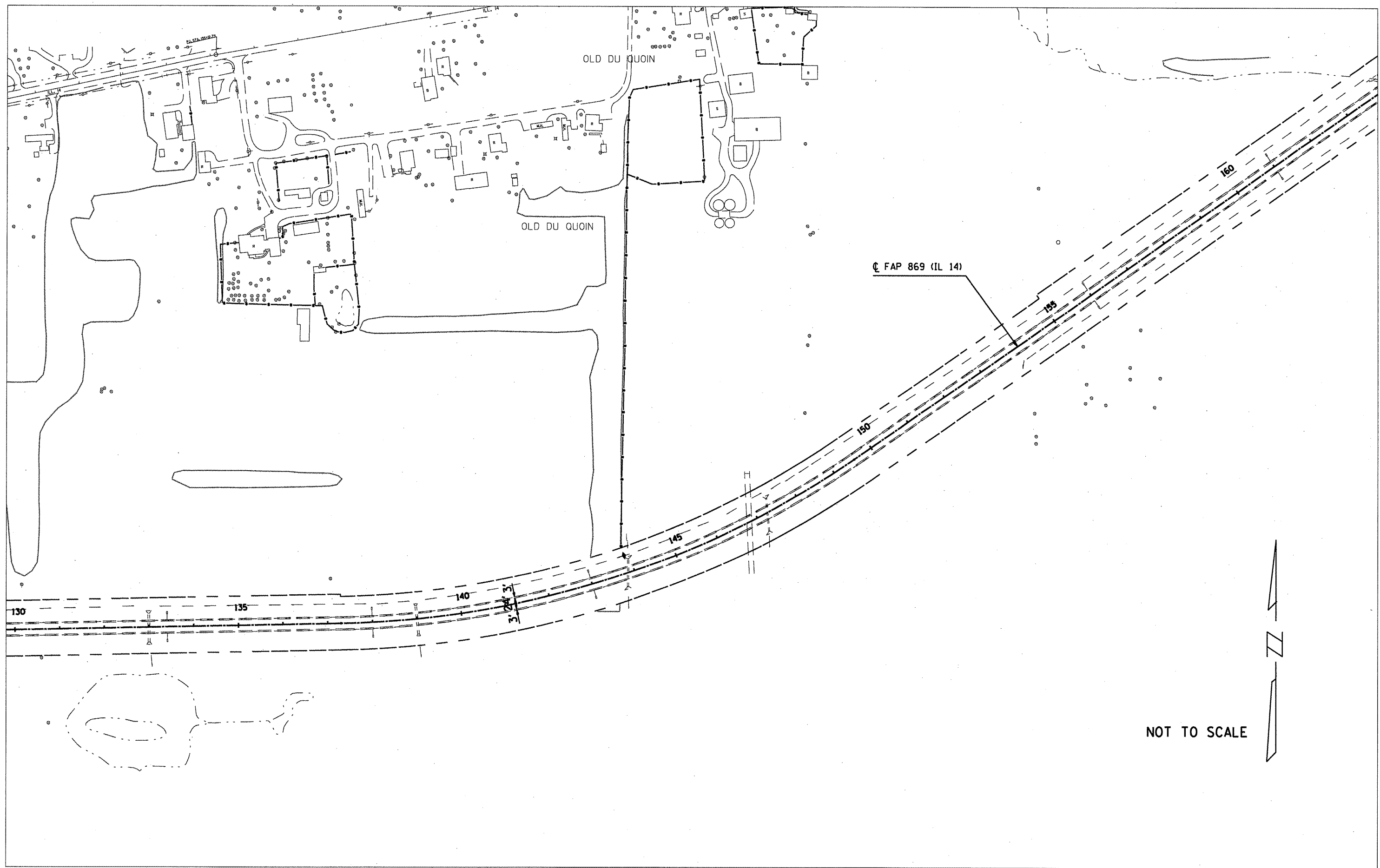
FILE NAME = c:\p\work\p\dot\m\acordkr\d0239288\78227-shr-plan.dgn	USER NAME = maoardkr	DESIGNED - ---	REVISED - ---	STATE OF ILLINOIS DEPARTMENT OF TRANSPORTATION	PLAN LAYOUT -- STA. 84±50 -- TO STA. 99±00		F.A.P. RTE. -869	SECTION 09.PAVT.EBESEBY.2011-2	COUNTY EBBY	TOTAL SHEETS 11	SHEET NO. 8		
	PLOT SCALE = 1/99.9996 "/> IN.	CHECKED - ---	REVISED - ---		SCALE: _____	SHEET NO. _____ OF _____ SHEETS	STA. _____ TO STA. _____	CONTRACT NO. 78227 ILLINOIS FED. AID PROJECT					
	PLOT DATE = 1/13/2011	DATE - ---	REVISED - ---		REVISED - ---								



**DETAIL OF INTERSECTION
FAP 869 (IL 14) AND CRABAPPLE RD.**

NOT TO SCALE

FILE NAME = c:\pwwork\pwwork\mccoordkr\10239208\782	USER NAME = mccoordkr	DESIGNED - ---	REVISED - ---	STATE OF ILLINOIS DEPARTMENT OF TRANSPORTATION	--- PLAN LAYOUT --- STA. 99 ± 00 TO STA. 130 ± 00 ---		F.A.P. RTE. 869	SECTION 09_PAVI_PBESEBY_2011-2	COUNTY PEBBY	TOTAL SHEETS 11	SHEET NO. 9
	PLOT SCALE = 1/8" = 1' IN.	CHECKED - ---	REVISED - ---		SCALE: _____	SHEET NO. _____ OF _____ SHEETS	STA. _____ TO STA. _____	CONTRACT NO. 78227		ILLINOIS FED. AID PROJECT	
PLOT DATE = 1/13/2011	DATE - ---	REVISED - ---	REVISED - ---								



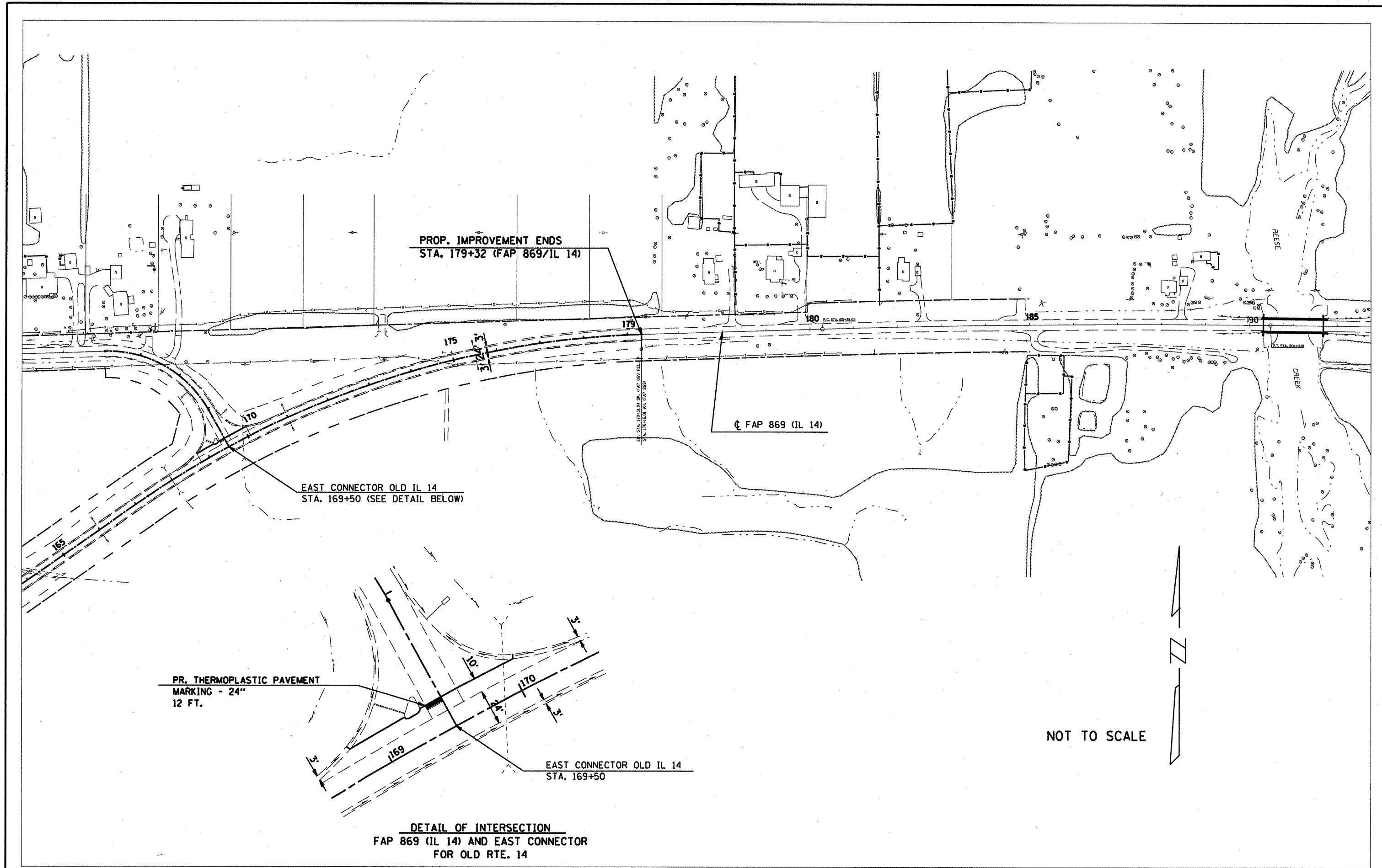
FILE NAME =	USER NAME = mcoordkr	DESIGNED -	REVISED -
cr:\pw_work\pwt\dot\mcoordkr\8239288\7827-sht-plandgn		DRAWN -	REVISED -
	PLOT SCALE = 1/99.9996 "/td> <td>CHECKED -</td> <td>REVISED -</td>	CHECKED -	REVISED -
	PLOT DATE = 1/13/2011	DATE -	REVISED -

**STATE OF ILLINOIS
DEPARTMENT OF TRANSPORTATION**

--- PLAN LAYOUT --- STA. 130 ± 00 ---
TO STA. 164 ± 00 ---

SCALE: _____ SHEET NO. _____ OF _____ SHEETS STA. _____ TO STA. _____

F.A.P. RTE.	SECTION	COUNTY	TOTAL SHEETS	SHEET NO.
869	D9_PAVT_PRESERVY_2011-2	PERBY	11	10
				CONTRACT NO. 18227
ILLINOIS FED. AID PROJECT				



NOT TO SCALE

DETAIL OF INTERSECTION
FAP 869 (IL 14) AND EAST CONNECTOR
FOR OLD RTE. 14

FILE NAME =
 c:\p\work\p\dot\mccordkr\0239288\7827-sht-plan.dgn

USER NAME = mcoordkr
 27-sht-plan.dgn
 PLOT SCALE = 1/99.9996 / IN.
 PLOT DATE = 1/13/2011

DESIGNED -	---	REVISED -	-----
DRAWN -	---	REVISED -	-----
CHECKED -	---	REVISED -	-----
DATE -	---	REVISED -	-----

STATE OF ILLINOIS
DEPARTMENT OF TRANSPORTATION

--- **PLAN LAYOUT -- STA. 164 ± 00.** ---
 --- **TO STA. 179 ± 32.** ---
 SCALE: _____ SHEET NO. _____ OF _____ SHEETS STA. _____ TO STA. _____

F.A.P. RTE.	SECTION	COUNTY	TOTAL SHEETS	SHEET NO.
869	D9_PAVT_PRESERV_2011-2	PERBY	11	11
				CONTRACT NO. 78227
ILLINOIS FED. AID PROJECT				