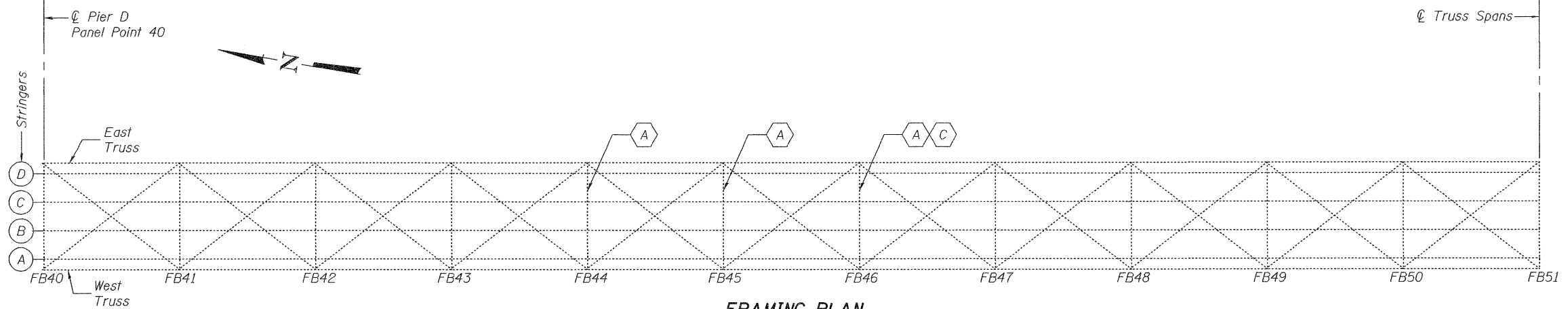


**ELEVATION**

350'-0" Span D



**FRAMING PLAN**

- A Repair Top Angles
- B Repair Web
- C Repair Bottom Angles
- D Replace Missing Rivets
- E Remove and Replace Neoprene Joint
- F Jack and Reposition Truss Bearing
- G Jack Remove and Reinstall Approach Bearings
- H Stringer Repair

DESIGNED - G.G.E.  
 CHECKED - V.H.V.  
 DRAWN - **Drew Christopher**  
 CHECKED - G.G.E. V.H.V.

EXAMINED *Jaime F. [Signature]* DATE - MARCH 14, 2011  
 ACTING ENGINEER OF STRUCTURAL SERVICES  
 PASSED *Carl [Signature]*  
 ACTING ENGINEER OF BRIDGES AND STRUCTURES

**STATE OF ILLINOIS  
 DEPARTMENT OF TRANSPORTATION**

**SPAN D PARTIAL PLAN AND ELEVATION  
 SN 002-0005**

SHEET NO. 4 OF 14 SHEETS

F.A.S. RTE.	SECTION	COUNTY	TOTAL SHEETS	SHEET NO.
944	(138D-BR)I-6	Alexander	22	12
CONTRACT NO. 78250			ILLINOIS FED. AID PROJECT	