

GENERAL NOTES

Reinforcement bars shall conform to the requirements of ASTM A 706 Gr 60. See Special Provisions.

Reinforcement bars designated (E) shall be epoxy coated.

Layout of slope protection system may be varied in the field to suit ground conditions as directed by the Engineer.

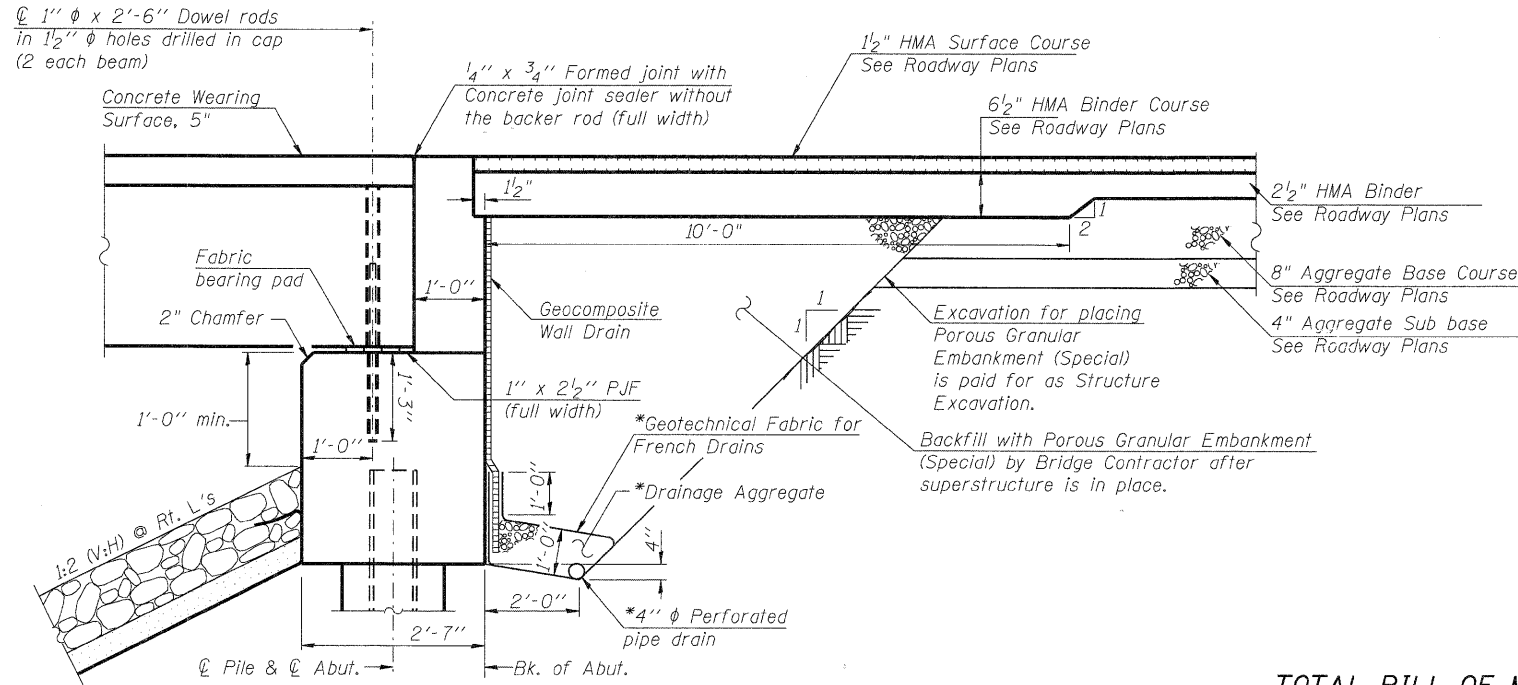
The Contractor shall obtain a construction permit from the Illinois Department of Natural Resources (IDNR), Office of Water Resources for any temporary construction activity placed in the water except cofferdams. This shall include the placement of material for run-arounds, causeways, etc. Any permit application by the Contractor shall refer to the IDOT Floodway permit and ACOE Section 404 permit numbers as shown in the contract documents.

The existing abutments shall be removed to an elevation 2'-0" below finished grade at a minimum, and as necessary to construct the new abutments and / or place rip rap. Cost included under Removal of Existing Structures. Any reinforcing bars projecting from the remainder of the existing structure shall be cut off flush with surface of the remaining concrete.

Bidders please note limited usage of Stoneridge north of the bridge will be permitted for demolition and construction activities. See note 19 on Sheet 2, General Notes.

INDEX OF SHEETS

- S-1 General Plan and Elevation
- S-2 Bill of Material and General Notes
- S-3 Deck Plan and Cross Section
- S-4 Superstructure Details
- S-5 Superstructure Details
- S-6 Superstructure Details
- S-7 South Abutment Details
- S-8 North Abutment Details
- S-9 Railing Details
- S-10 Steel Pile Details
- S-11 Soil Boring Logs
- S-12 Soil Boring Logs

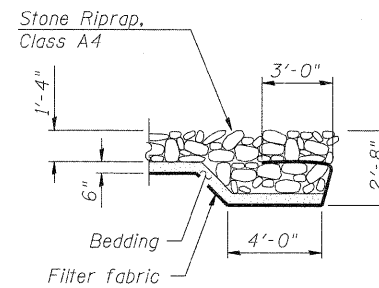


SECTION THRU ABUTMENT

(Horiz. dim. @ Rt. L's)

*Included in the cost of Pipe Underdrains for Structures.

Note: All drainage system components shall extend to 2'-0" from the end of each wingwall except an outlet pipe shall extend until intersecting with the side slopes. The pipes shall drain into concrete headwalls. (See Article 601.05 of the Standard Specifications and Highway Standard 601101).

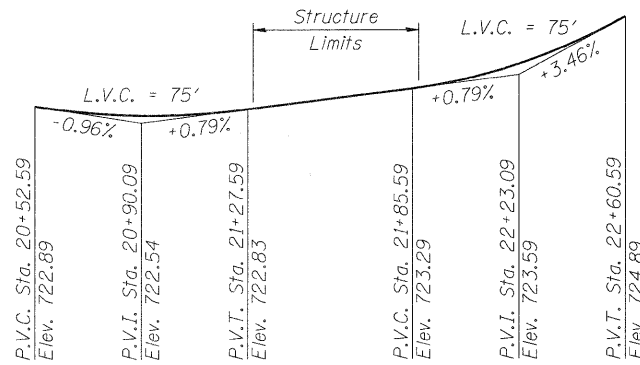


SECTION A-A

(See S-1)

TOTAL BILL OF MATERIAL

ITEM	UNIT	SUPER	SUB	TOTAL
Stone Riprap, Class A4	Sq. Yds.		390	390
Filter Fabric	Sq. Yds.		390	390
Removal of Existing Structures	Each	0.5	0.5	1
Structure Excavation	Cu. Yds.		167	167
Concrete Structures	Cu. Yds.		21.4	21.4
Concrete Superstructures	Cu. Yds.	5.6		5.6
Bridge Deck Grooving	Sq. Yds.	136		136
Concrete Encasement	Cu. Yds.		6.6	6.6
Protective Coat	Sq. Yds.	154		154
Precast, Prestressed Concrete Deck Beams, 27 inch	Sq. Ft.	1,335		1,335
Reinforcement Bars, Epoxy Coated	Pound	1,910	4,100	6,010
Steel Railing, Type SM	Foot	114		114
Furnishing Steel Piles HP12x53	Foot		600	600
Driving Piles	Foot		600	600
Test Pile Steel HP 12 x 53	Each	2		2
Name Plates	Each	1		1
Geocomposite Wall Drain	Sq. Yds.	49		49
Concrete Headwalls for Pipe Drains	Each	4		4
Porous Granular Embankment, (Special)	Cu. Yds.		84	84
Concrete Wearing Surface, 5"	Sq. Yds.	149		149
Pipe Underdrains for Structures, 4"	Foot	110		110



PROFILE GRADE

(along roadway)

SPRING CREEK
 BUILT 20... BY CITY OF ROCKFORD
 SEC. 09-00559-00-BR
 STA. 21+58.30
 STR. NO. 101-6011 LOADING HL93

NAME PLATE

See Std. 515001

SEC GROUP, INC.
 PROJECT CONTACT: Kevin Hart
 CLIENT: City of Rockford
 DATE PLOTTED: 12/16/2010 11:17:08 AM
 FILE NAME: 09-00559-00-br-01.dgn
 PLOT DRIVER: PLOT.plt
 PEN TABLE: standard-trans.tbl

SEC Group, Inc.
 An HR Green Company
 425 N. Hunt Street
 Mokena, IL 60452-2138
 L 815.281.1778 F 815.281.1781
 www.secgroupinc.com

USER NAME = whood	DESIGNED - JMW	REVISED -
PLOT SCALE = N.T.S.	CHECKED - RGD	REVISED -
PLOT DATE = 12/16/2010	DRAWN - RCB	REVISED -
	CHECKED - 12/16/10	REVISED -

**STATE OF ILLINOIS
 DEPARTMENT OF TRANSPORTATION**

**BILL OF MATERIAL AND GENERAL NOTES
 STONERIDGE DRIVE - S.N. 101-6011**

F.A. RTE.	SECTION	COUNTY	TOTAL SHEETS	SHEET NO.
	09-00559-00-BR	WINNEBAGO	21	9
CONTRACT NO. 85528			ILLINOIS FED. AID PROJECT	