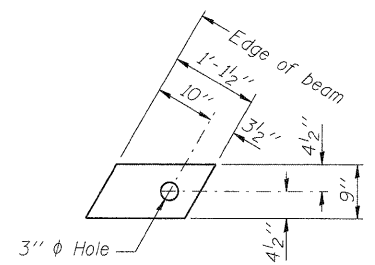


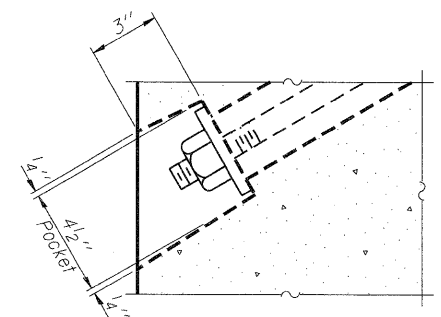
**FABRIC BEARING PAD**  
(Interior)



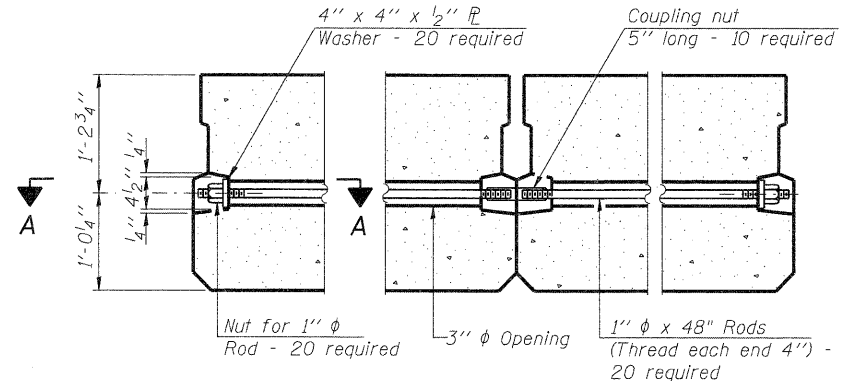
**FABRIC BEARING PAD**  
(Exterior)

**FIXED**

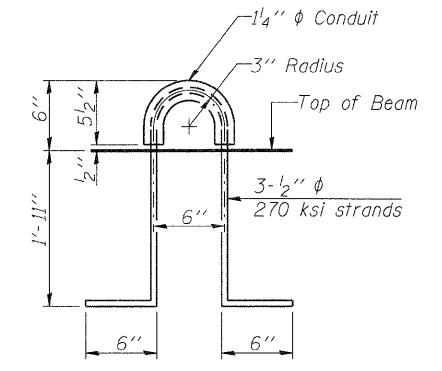
Notes:  
All bearing pads shall be 1" thick.  
Omit holes when using expansion bearings.  
Expansion bearing pad shall be bonded to the substructure.



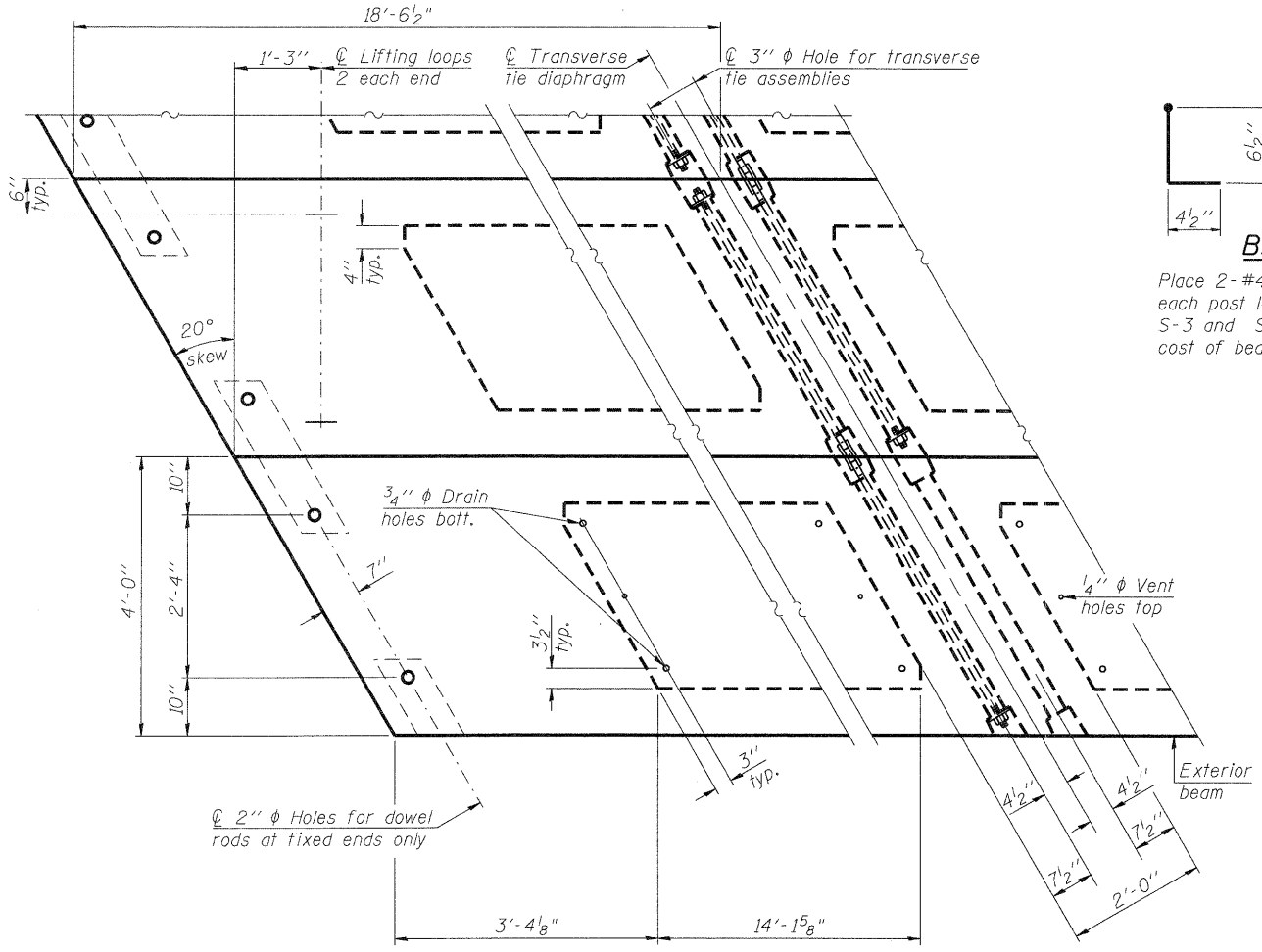
**SECTION A-A**



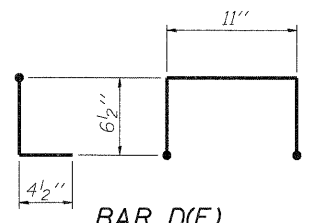
**TYPICAL TRANSVERSE TIE ASSEMBLY**



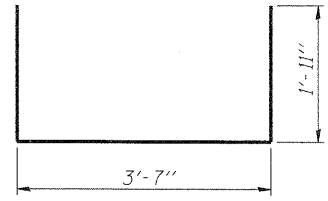
**LIFTING LOOP DETAIL**



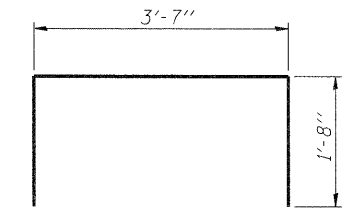
**PLAN VIEW**



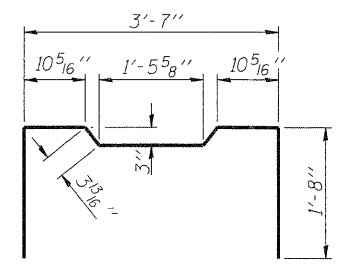
**BAR D(E)**  
Place 2-#4 D(E) bars in beam at each post location as shown on Sheets S-3 and S-4. D(E) bar included in cost of beam.



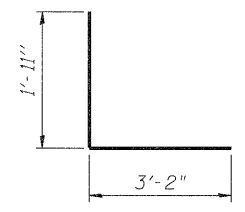
**BAR S(E)**



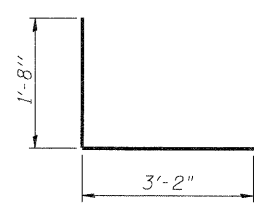
**BAR S1(E)**



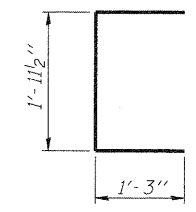
**BAR S2(E)**



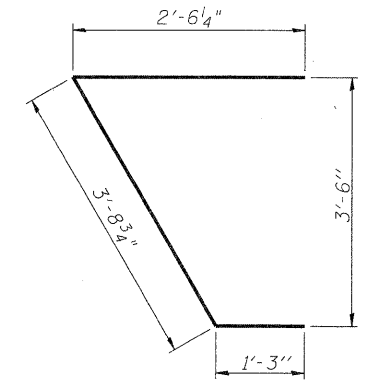
**BAR S3(E)**



**BAR S4(E)**



**BAR U(E)**



**BAR U1(E)**

**NOTES**

Prestressing steel shall be uncoated high strength, low relaxation 7-wire strand, Grade 270. The nominal diameter shall be 1/2" and the nominal cross-sectional area shall be 0.153 sq. in. The 1" phi rods in the transverse tie assembly shall be tightened to a snug fit and the threads set. Pockets on exterior faces of bridge shall be filled with grout after transverse tie assembly is in place.  
Reinforcement bars shall conform to ASTM A 706, Grade 60. (See Special Provisions).  
Two 1/8" fabric adjusting shims of the dimensions of the exterior bearing pad shall be provided for each bearing pad location.  
A minimum 2 1/2" phi lifting pin shall be used to engage the lifting loops during handling.  
Corrosion Inhibitor, per Article 1020.05(b)(12) and 1021.06 of the Standard Specifications, shall be used in the concrete for precast prestressed concrete deck beams.  
Compressive strength of prestressed concrete, f'c, shall be 6000 psi.  
Compressive strength of prestressed concrete at release, f'ci, shall be 5000 psi.

**BILL OF MATERIAL**

Precast Prestressed Conc. Deck Bms. (27" depth)	Sq. Ft.	1,335
---	---------	-------

COMPANY NAME: SEC GROUP, INC.  
PROJECT CONTACT: Keith A. Art  
CLIENT: City of Rockford  
DATE PLOTTED: 12/16/2010 11:28 AM  
FILE NAME: 86100020-sup-03.dgn  
PLOT DRIVER: PDP.plt  
PEN TABLE: standard-trans.tbl

**SEC Group, Inc.**  
420 N. Front Street  
Rockford, IL 61102-2138  
Tel: 815.395.1778 Fax: 815.395.1781  
www.secgroupinc.com

USER NAME = whood	DESIGNED - JMW	REVISIONS
PLOT SCALE = N.T.S.	CHECKED - RGD	REVISIONS
PLOT DATE = 12/16/2010	DRAWN - RCB	REVISIONS
	CHECKED - 12/16/10	REVISIONS

**STATE OF ILLINOIS**  
**DEPARTMENT OF TRANSPORTATION**

**SUPERSTRUCTURE DETAILS**  
**STONERIDGE DRIVE - S.N. 101-6011**

F.A. RTE.	SECTION	COUNTY	TOTAL SHEETS	SHEET NO.
	09-00559-00-BR	WINNEBAGO	21	13
CONTRACT NO. 85528			ILLINOIS FED. AID PROJECT	