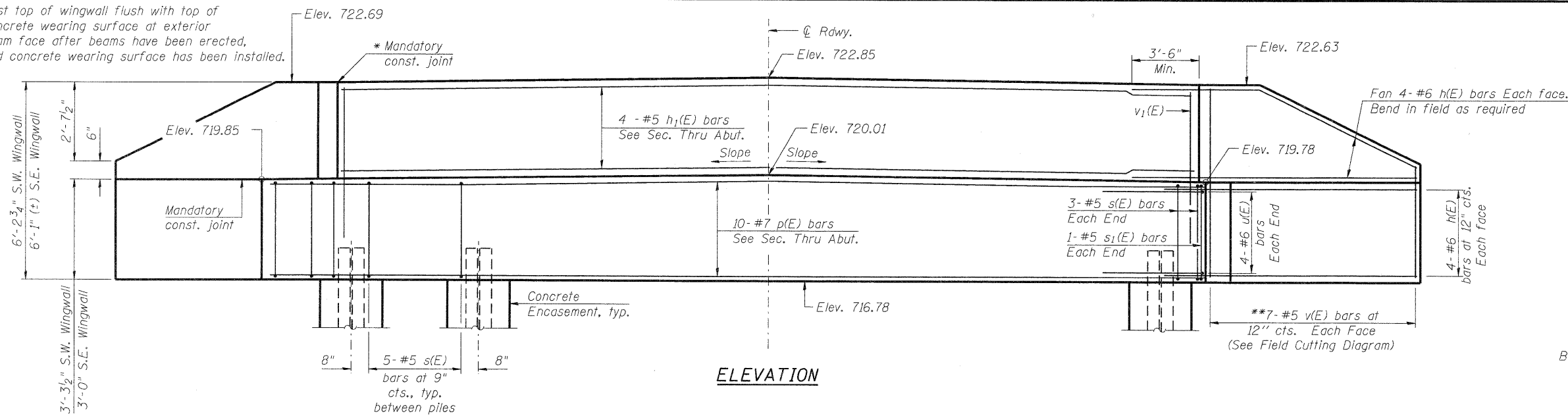
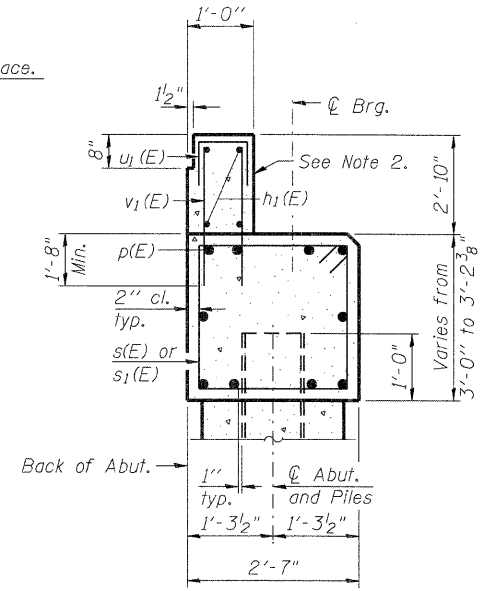


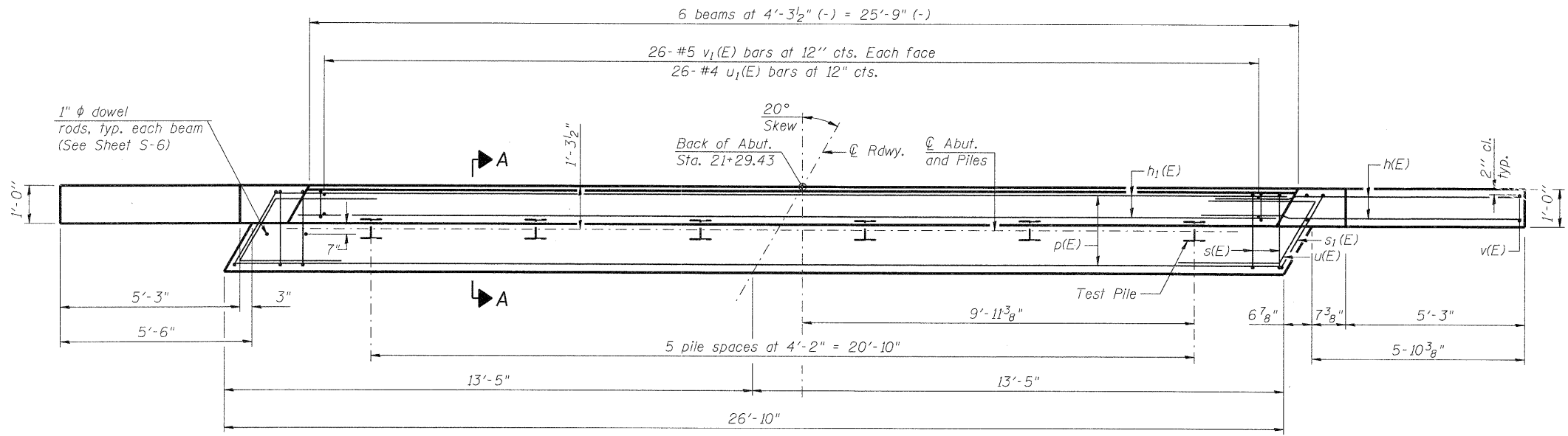
*Cast top of wingwall flush with top of concrete wearing surface at exterior beam face after beams have been erected, and concrete wearing surface has been installed.



ELEVATION



SECTION A-A
(Dimensions are at Rt. L's)



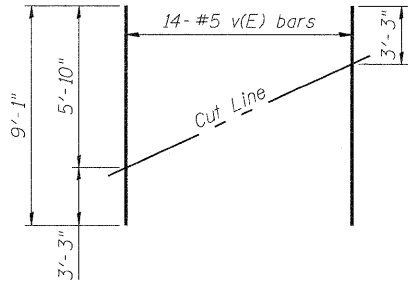
PLAN

BILL OF MATERIAL

Bar	No.	Size	Length	Shape
h(E)	32	#6	10'-6"	—
h1(E)	4	#5	25'-5"	—
p(E)	10	#7	26'-6"	—
s(E)	31	#5	10'-9"	□
s1(E)	2	#5	11'-0"	□
u(E)	8	#6	7'-5"	┌
u1(E)	26	#4	3'-7"	┌
v(E)	14	#5	9'-1"	—
v1(E)	52	#5	4'-6"	—
Structure Excavation		Cu. Yd.	83.5	
Concrete Superstructure		Cu. Yd.	2.8	
Concrete Structures		Cu. Yd.	10.7	
Reinforcement Bars, Epoxy Coated		Pound	2,050	
Furnishing Steel Piles, HP12x53		Foot	300	
Driving Piles		Foot	300	
Test Pile, Steel HP 12x53		Each	1	
Concrete Encasement		Cu. Yd.	3.3	

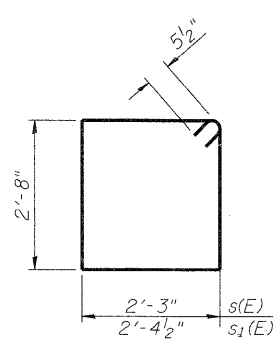
PILE DATA

Type: Steel - HP12x53
Nominal Required Bearing: 225K
Factored Resistance Available: 110K
Est. Length: 60'
No. Production Piles: 5
No. Test Piles: 1

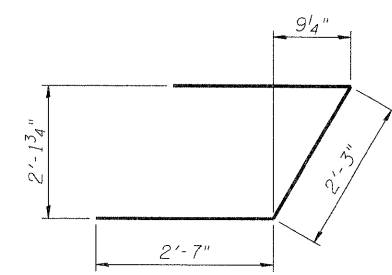


FIELD CUTTING DIAGRAM

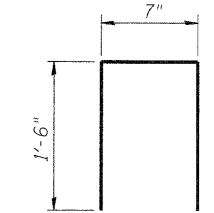
**Order v(E) full length. Cut as shown and use remainder of bars in opposite face.



BARS s(E) & s1(E)



BAR u(E)



BAR u1(E)

Notes:
1. For details of piles and Concrete Encasement, see sheet S-10.
2. Cast backwall after beams and concrete wearing surface have been erected.

SEC GROUP, INC.
PROJECT CONTACT: Kevin Arft
CLIENT: City of Rockford
DATE PLOTTED: 12/16/2010 11:13:33 AM
FILE NAME: 86100020-abt-01.dgn
PLOT DRIVER: PLOT.DWT
PEN TABLE: standard-trans.tbl

SEC Group, Inc.
423 N. First Street
Rockford, IL 61103-2138
Tel: 815.395.1778 Fax: 815.395.1781
www.secgroupinc.com

USER NAME = jwhood	DESIGNED = JMW	REVISED =
PLOT SCALE = N.T.S.	CHECKED = RGD	REVISED =
PLOT DATE = 12/16/2010	DRAWN = RCB	REVISED =
	CHECKED = 12/16/10	REVISED =

STATE OF ILLINOIS
DEPARTMENT OF TRANSPORTATION

SOUTH ABUTMENT DETAILS
STONERIDGE DRIVE - S.N. 101-6011

SHEET NO. S-7 OF S-12 SHEETS

F.A. RTE.	SECTION	COUNTY	TOTAL SHEETS	SHEET NO.
	09-00559-00-BR	WINNEBAGO	21	14
CONTRACT NO. 85528			ILLINOIS FED. AID PROJECT	