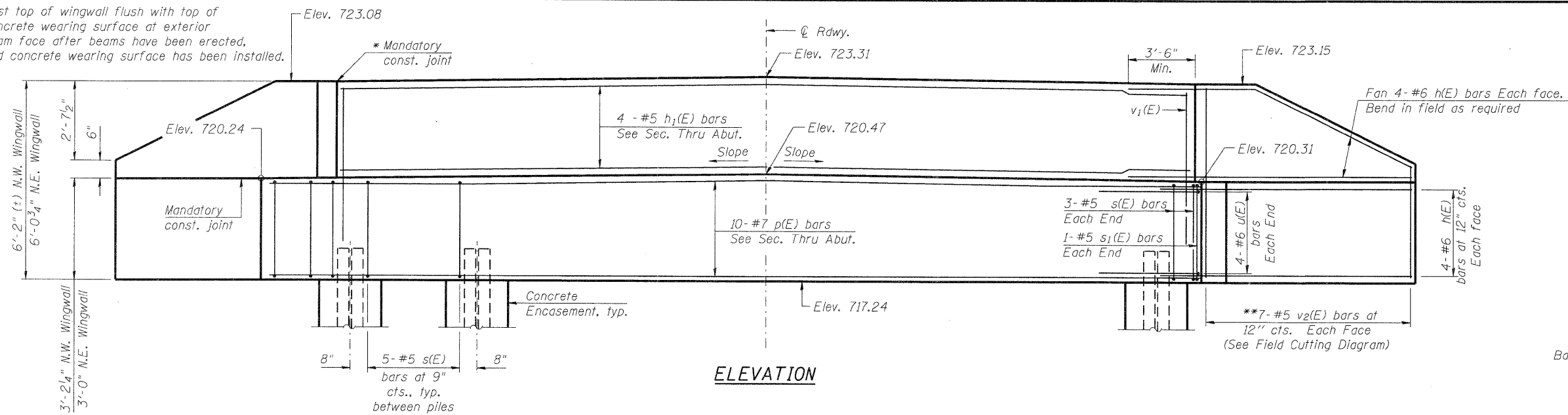
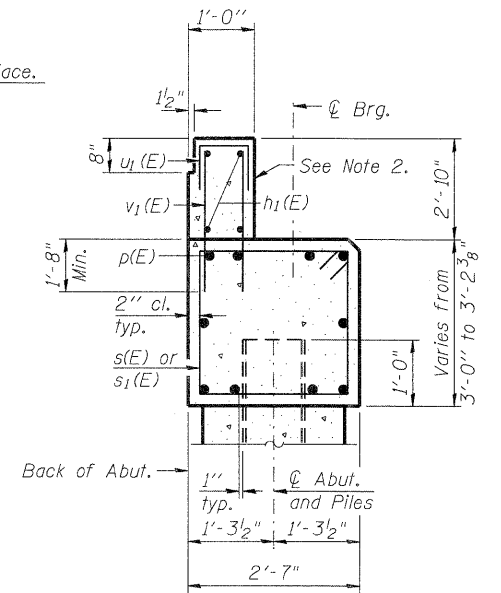


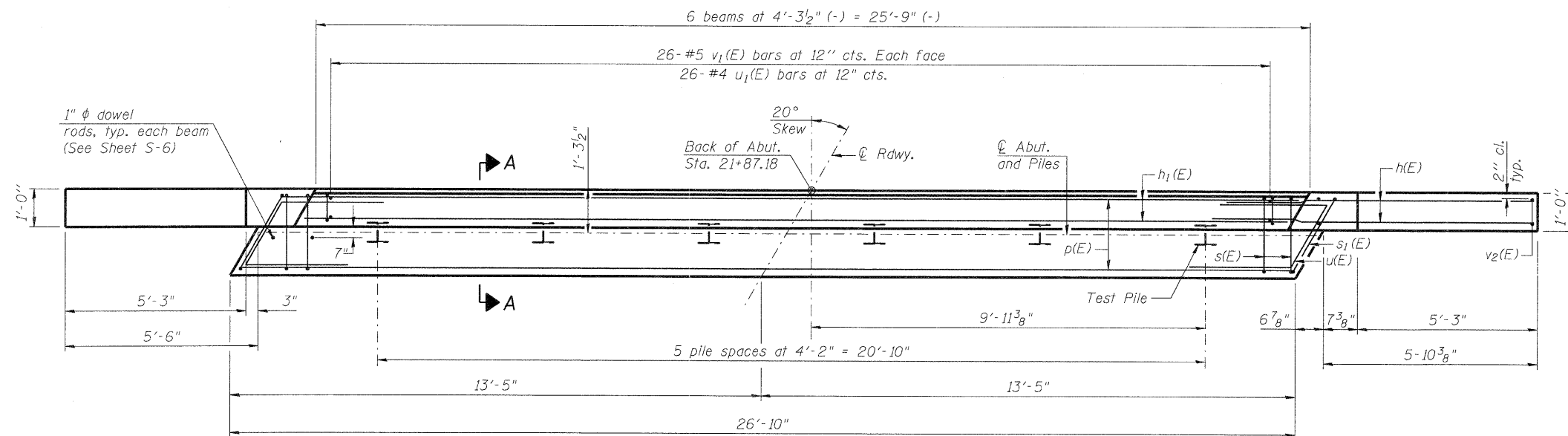
*Cast top of wingwall flush with top of concrete wearing surface at exterior beam face after beams have been erected, and concrete wearing surface has been installed.



ELEVATION



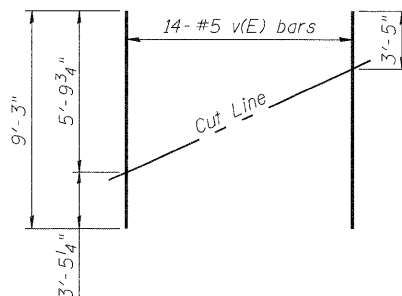
SECTION A-A
(Dimensions are at Rt. L's)



PLAN

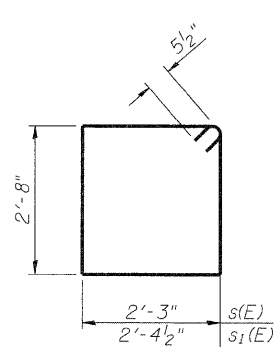
PILE DATA

Type: Steel - HP12x53
 Nominal Required Bearing: 225K
 Factored Resistance Available: 110K
 Est. Length: 60'
 No. Production Piles: 5
 No. Test Piles: 1

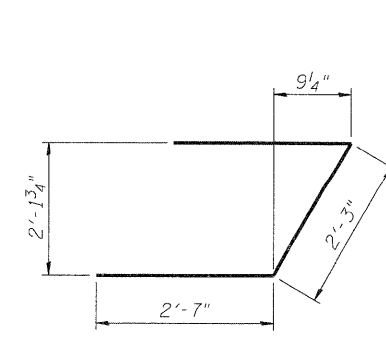


FIELD CUTTING DIAGRAM

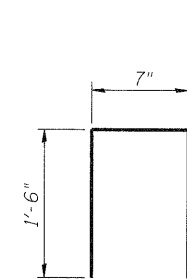
**Order v2(E) full length. Cut as shown and use remainder of bars in opposite face. Trim to fit in N.E. wing wall.



BARS s(E) & s1(E)



BAR u1(E)



BAR u1(E)

BILL OF MATERIAL

Bar	No.	Size	Length	Shape	
h(E)	32	#6	10'-6"	—	
h1(E)	4	#5	25'-5"	—	
p(E)	10	#7	26'-6"	—	
s(E)	31	#5	10'-9"	□	
s1(E)	2	#5	11'-0"	□	
u(E)	8	#6	7'-5"	┘	
u1(E)	26	#4	3'-7"	┘	
v1(E)	52	#5	4'-6"	—	
v2(E)	14	#5	9'-3"	—	
Structure Excavation				Cu. Yd.	83.5
Concrete Superstructure				Cu. Yd.	2.8
Concrete Structures				Cu. Yd.	10.7
Reinforcement Bars, Epoxy Coated				Pound	2,050
Furnishing Steel Piles, HP12x53				Foot	300
Driving Piles				Foot	300
Test Pile, Steel HP 12x53				Each	1
Concrete Encasement				Cu. Yd.	3.3

Notes:
 1. For details of piles and Concrete Encasement, see sheet S-10.
 2. Cast backwall after beams and concrete wearing surface have been erected.

COMPANY NAME: SEC GROUP, INC.
 PROJECT CONTACT: Kevin Arff
 CLIENT: City of Rockford
 DATE PLOTTED: 12/16/2010 11:17:39 AM
 FILE NAME: 86100020-abt-02.dgn
 PLOT DRIVER: PdfPlot
 PEN TABLE: Standard-Trans.tbl

SEC Group, Inc.
 An HR Group Company
 420 N. First Street
 Moline, IL 62950-2158
 U.S. 905.1778 • FAX 905.585.1791
 www.secgroupinc.com
 ©2009 SEC Group, Inc. All Rights Reserved.

USER NAME = whoad	DESIGNED - JMW	REVISD -
PLLOT SCALE = N.T.S.	CHECKED - RGD	REVISD -
PLLOT DATE = 12/16/2010	DRAWN - RCB	REVISD -
	CHECKED - 12/16/10	REVISD -

STATE OF ILLINOIS
 DEPARTMENT OF TRANSPORTATION

NORTH ABUTMENT DETAILS
 STONERIDGE DRIVE - S.N. 101-6011

SHEET NO. S-8 OF S-12 SHEETS

F.A. RTE.	SECTION	COUNTY	TOTAL SHEETS	SHEET NO.
	09-00559-00-BR	WINNEBAGO	21	15
CONTRACT NO. 85528				

ILLINOIS FED. AID PROJECT