

STRUCTURE SCHEDULE

STATION	LT/RT	OFFSET	TYPE	CONTROL ELEVATION	FLOWLINE ELEVATION	INVERT ELEVATIONS				NOTE
						N	E	S	W	
8										
9										
9A										
10										
11										
12										
13										
13A										
14										
15										
16										
17										

SEC. 18, T26N, R3W, 3rd PM

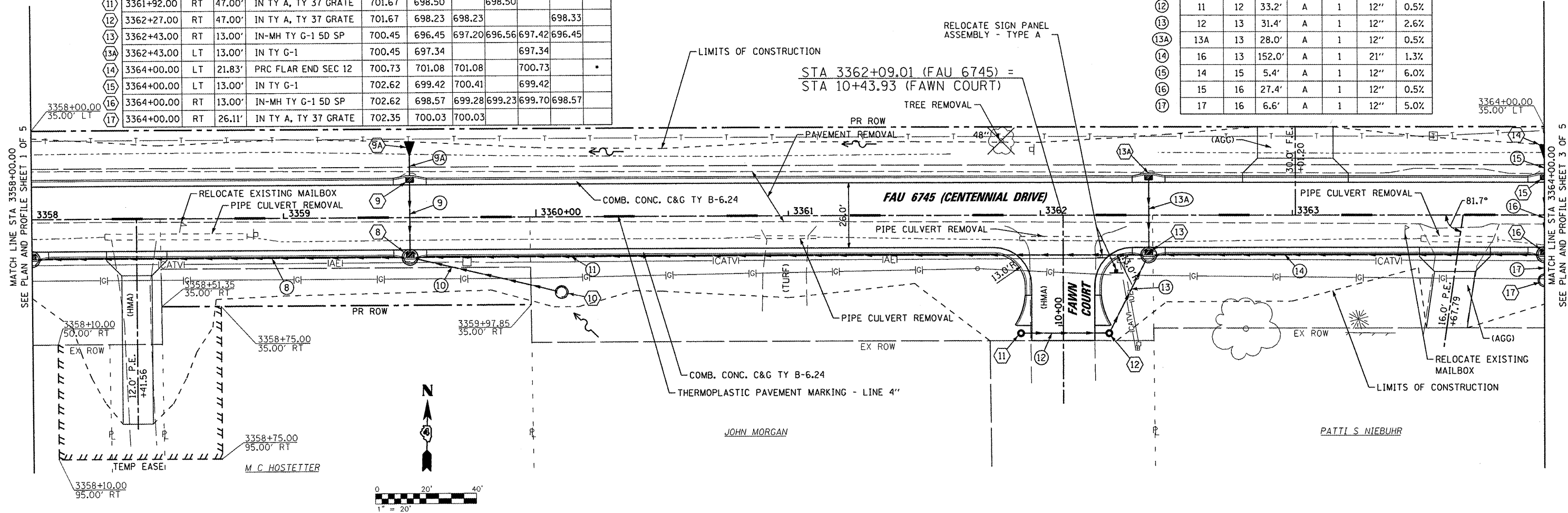
NOTE: FOR PRC FLARED END SECTIONS, FLOWLINE ELEVATION IS AT THE OPEN (FLARED) END, AND CONTROL ELEVATION IS AT THE CONNECTION TO THE PIPE.

PIPE SCHEDULE

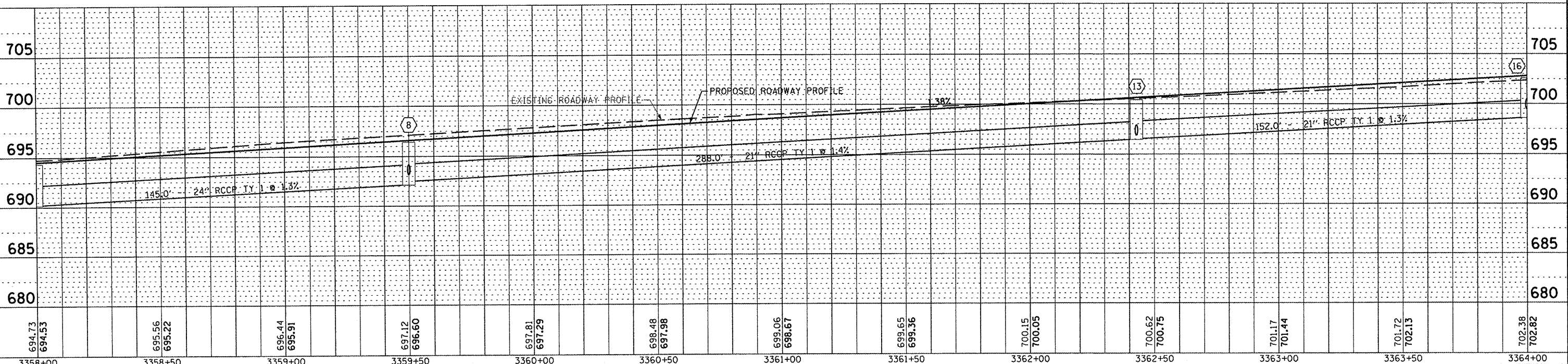
FROM STR.	TO STR.	LENGTH	CLASS	TYPE	DIA	SLOPE
8	7	145.0'	A	1	24"	1.3%
9	8	27.4'	A	1	12"	0.5%
9A	9	7.6'	A	1	12"	6.2%
10	8	57.2'	A	1	12"	2.1%
11	8	288.0'	A	1	21"	1.4%
12	11	33.2'	A	1	12"	0.5%
13	12	31.4'	A	1	12"	2.6%
13A	13	28.0'	A	1	12"	0.5%
14	16	152.0'	A	1	21"	1.3%
15	14	5.4'	A	1	12"	6.0%
16	15	27.4'	A	1	12"	0.5%
17	16	6.6'	A	1	12"	5.0%

DATE	BY

DATE	BY



SEC. 19, T26N, R3W, 3rd PM



FILE NAME =	USER NAME = rmbroadie	DESIGNED - BAB/RAW	REVISED -	STATE OF ILLINOIS DEPARTMENT OF TRANSPORTATION	CENTENNIAL DRIVE PHASE IV PLAN & PROFILE			F.A.U. RTE. = 6745	SECTION = 07-00130-03-PV	COUNTY = TAZEWELL	TOTAL SHEETS = 39	SHEET NO. = 10
		DRAWN - BAB	REVISED -		SCALE: 1" = 20'	SHEET NO. 2 OF 5 SHEETS	STA. 3358+00.00 TO STA. 3363+00.00	CONTRACT NO. 89481				
		CHECKED - RMB	REVISED -		ILLINOIS FED. AID PROJECT							
		DATE = 03/02/2011	REVISED -									