

DATE: _____ BY: _____
 SURVEYED: _____
 PLANNED: _____
 CHECKED: _____
 NO. _____

DATE: _____ BY: _____
 SURVEYED: _____
 PROFILE: _____
 NO. _____

STRUCTURE SCHEDULE

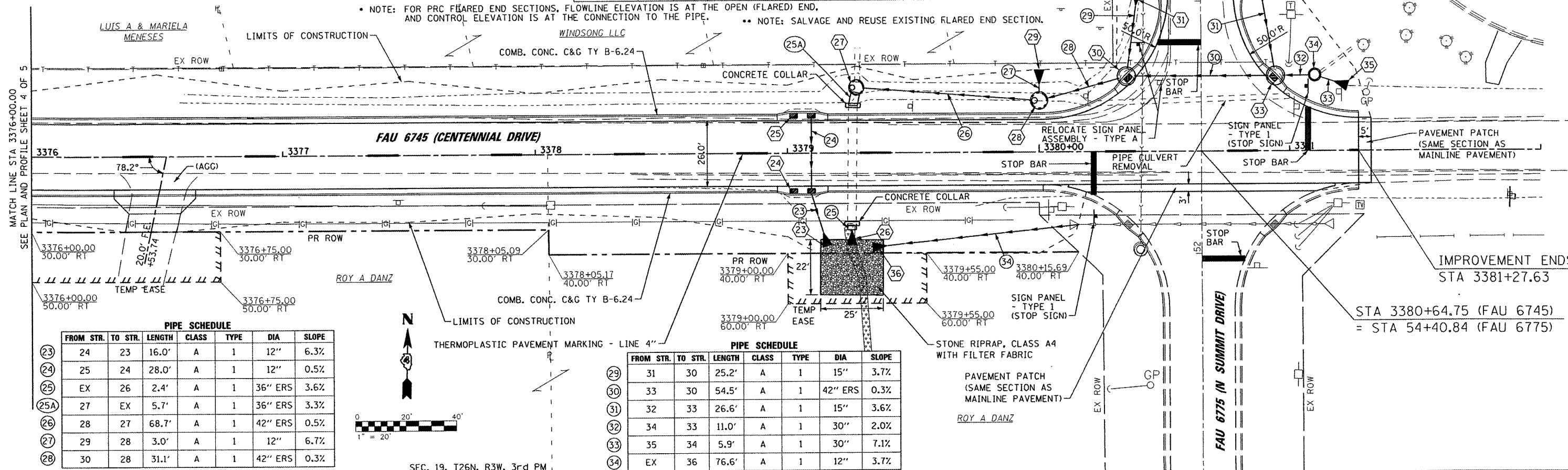
STATION	LT / RT	OFFSET	TYPE	CONTROL ELEVATION	FLOWLINE ELEVATION	INVERT ELEVATIONS				NOTE
						N	E	S	W	
3379+14.00	RT	31.34'	PRC FLAR END SEC 12	711.26	710.73	711.26		710.73		*
3379+06.00	RT	13.00'	INLETS TG-1 DBL (SPL)	716.06	712.26	712.65		712.26		
3379+06.00	LT	13.00'	INLETS TG-1 DBL (SPL)	716.06	712.79			712.79		
3379+25.55	RT	30.57'	PRC FL END S E O RS 36	710.58	710.32	710.58		710.32		*
3379+27.40	LT	26.00'	MAN TA 6 DIA TY 37 CRT	715.85	712.20	713.19	712.20	712.25		
3380+00.00	LT	20.50'	MAN TA 6 DIA TIF CL	717.10	712.56	713.83	712.58		712.56	
3380+00.00	LT	26.46'	PRC FLAR END SEC 12	714.03	714.75	714.75		714.03		*

SEC. 18, T26N, R3W, 3rd PM

STRUCTURE SCHEDULE

STATION	LT / RT	OFFSET	TYPE	CONTROL ELEVATION	FLOWLINE ELEVATION	INVERT ELEVATIONS				NOTE
						N	E	S	W	
3380+37.01	LT	27.68'	IN-MH TY G-1 6D SP	717.29	712.68	714.06	712.70		712.68	
3380+38.76	LT	57.18'	PRC FLAR END SEC 15	715.00	715.22	715.22		715.00		*
3380+89.56	LT	58.43'	PRC FLAR END SEC 15	715.25	715.47	715.47		715.25		*
3380+92.32	LT	27.66'	IN-MH TY G-1 6D SP	716.91	712.88	714.29	713.68		712.88	
3381+10.00	LT	30.00'	MAN TA 6 DIA TIF CL	718.00	713.90	715.95	715.27		713.90	
3381+17.47	LT	27.52'	PRC FLAR END SEC 30	715.85	715.69		715.69		715.85	*
3379+39.66	RT	37.03'	PRC FLAR END SEC 12	710.93	710.70	710.93		710.70		**

* NOTE: FOR PRC FLARED END SECTIONS, FLOWLINE ELEVATION IS AT THE OPEN (FLARED) END, AND CONTROL ELEVATION IS AT THE CONNECTION TO THE PIPE.
 ** NOTE: SALVAGE AND REUSE EXISTING FLARED END SECTION.

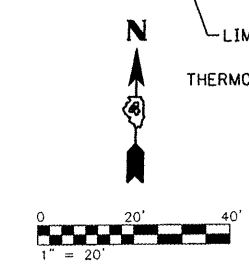


PIPE SCHEDULE

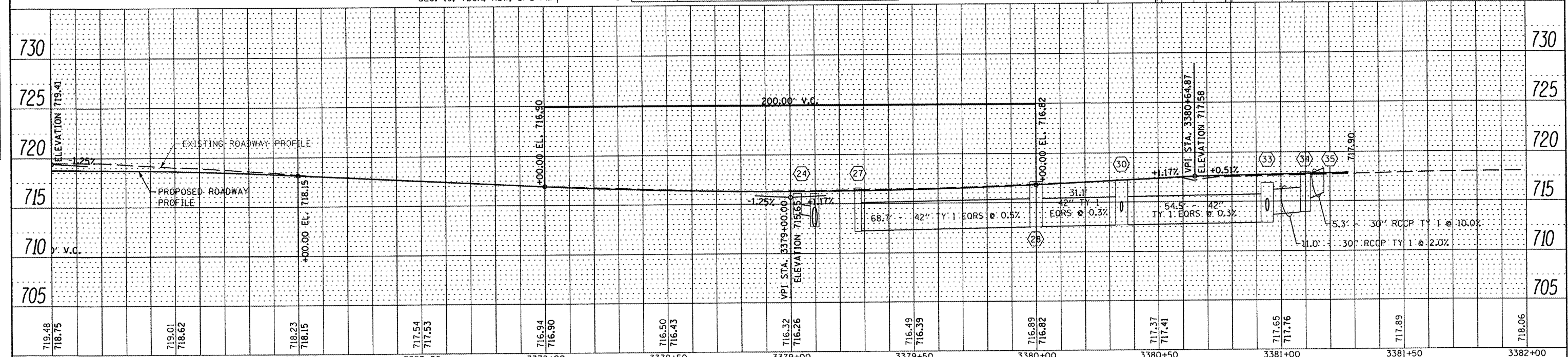
FROM STR.	TO STR.	LENGTH	CLASS	TYPE	DIA	SLOPE
24	23	16.0'	A	1	12"	6.3%
25	24	28.0'	A	1	12"	0.5%
EX	26	2.4'	A	1	36" ERS	3.6%
27	EX	5.7'	A	1	36" ERS	3.3%
28	27	68.7'	A	1	42" ERS	0.5%
29	28	3.0'	A	1	12"	6.7%
30	28	31.1'	A	1	42" ERS	0.3%

PIPE SCHEDULE

FROM STR.	TO STR.	LENGTH	CLASS	TYPE	DIA	SLOPE
31	30	25.2'	A	1	15"	3.7%
33	30	54.5'	A	1	42" ERS	0.3%
32	33	26.6'	A	1	15"	3.6%
34	33	11.0'	A	1	30"	2.0%
35	34	5.9'	A	1	30"	7.1%
EX	36	76.6'	A	1	12"	3.7%



SEC. 19, T26N, R3W, 3rd PM



FILE NAME: es:\237\2010\23710006 (Centennial Drive Segment)\VPH\I\CADD\CADD Sheets\0489481-sh1-pln	USER NAME: rmbadla	DESIGNED: BAB/RAW	REVISIONS:	STATE OF ILLINOIS DEPARTMENT OF TRANSPORTATION	CENTENNIAL DRIVE PHASE IV PLAN & PROFILE	F.A.U. R.T.E.: 6745	SECTION: 07-00130-03-PV	COUNTY: TAZEWELL	TOTAL SHEETS: 39	SHEET NO.: 13
PLOT SCALE: 40.0000' / IN.	CHECKED: RMB	DATE: 03/02/2011	REVISIONS:	SCALE: 1" = 20'	SHEET NO. 5 OF 5 SHEETS	STA. 3376+00.00 TO STA. 3381+27.63	CONTRACT NO. 89481		ILLINOIS FED. AID PROJECT	