

CO. HWY#	SECTION	COUNTY	TOTAL SHEETS	SHEET NO.
39	10-00056-09-SP	MCLEAN	7	1

INDEX OF SHEETS

- Cover Sheet
- Summary of Quantities and Schedules
- Proposed Typical Cross Sections
- Plan & Profile Sheet
- 5-7. Cross Section Sheets

**STATE OF ILLINOIS
DEPARTMENT OF TRANSPORTATION
DIVISION OF HIGHWAYS**

**PROPOSED
HIGHWAY PLANS**

**F.A.S. ROUTE 2473
SECTION 10-00056-09-SP
ROPP RD (CH 39) REALIGNMENT
MCLEAN COUNTY
PROJECT NO. HRR-2473(150)
JOB NO. C-95-302-11**

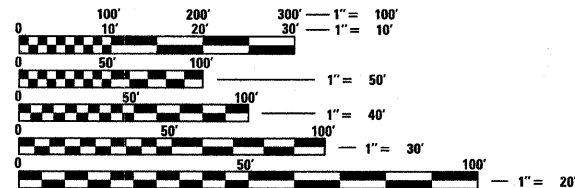
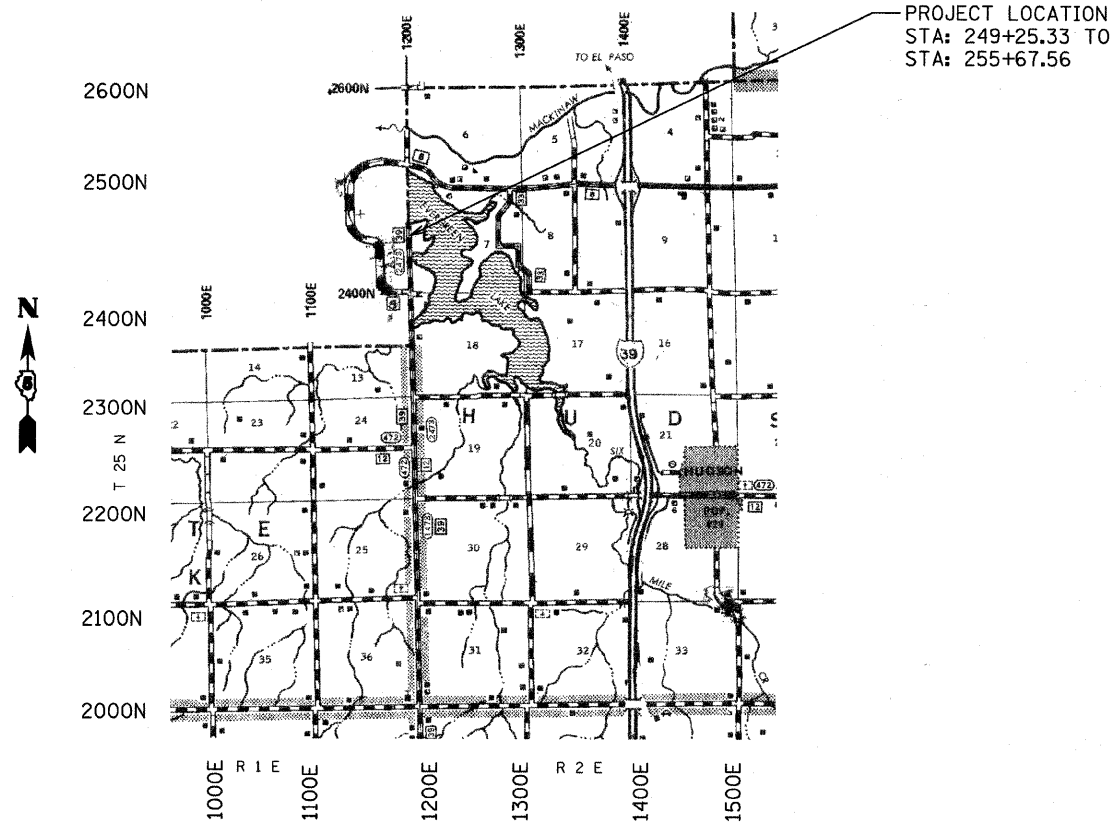
STATE STANDARD DETAILS

602306-03	INLET - TYPE B
604036-02	GRATE TYPE 8
701001-02	OFF-RD OPERATIONS, 2L, 2W, MORE THAN 15' AWAY
701006-03	OFF-RD OPERATIONS, 2L, 2W, 15' TO 24' FROM PAVEMENT EDGE
701011-02	OFF-RD MOVING OPERATIONS, 2L, 2W, DAY ONLY
701201-04	LANE CLOSURE, 2L, 2W, DAY
701301-04	LANE CLOSURE, 2L, 2W, SHORT TIME OPERATIONS
701326-04	LANE CLOSURE, 2L, 2W, PAVEMENT WIDENING
701901-01	TRAFFIC CONTROL DEVICES

UTILITIES

CORN BELT ELECTRIC

FRONTIER TELEPHONE



FULL SIZE PLANS HAVE BEEN PREPARED USING STANDARD ENGINEERING SCALES. REDUCED SIZED PLANS WILL NOT CONFORM TO STANDARD SCALES. IN MAKING MEASUREMENTS ON REDUCED PLANS, THE ABOVE SCALES MAY BE USED.

J.U.L.I.E.
JOINT UTILITY LOCATION INFORMATION FOR EXCAVATION
1-800-892-0123
OR 811

CONTRACT NO. 91448

APPROXIMATE SCALE: 0 1 MILE
FUNCTIONAL CLASSIFICATION : MAJOR COLLECTOR ADT 100
GROSS LENGTH = 624.23 FT. = 0.122 MILE
NET LENGTH = 624.23 FT. = 0.122 MILE
3R IMPROVEMENT



ILLINOIS PROFESSIONAL ENGINEER #57636
EXPIRES 11-30-11

**McLEAN COUNTY
HIGHWAY DEPARTMENT**

APPROVED Jan 4 20 11
[Signature]
COUNTY ENGINEER

PASSED 1/21 20 11
[Signature]
DISTRICT FIVE ENGINEER OF
LOCAL ROADS & STREETS

Releasing For
Bid Based on
Limited Review January 21, 2011 20
[Signature]
DEPUTY DIRECTOR OF HIGHWAYS,
REGION THREE ENGINEER

STATE OF ILLINOIS
DEPARTMENT OF TRANSPORTATION

**PRINTED BY THE AUTHORITY
OF THE STATE OF ILLINOIS**