

CO. HWY#	SECTION	COUNTY	TOTAL SHEETS	SHEET NO.
39	10-00056-09-SP	MCLEAN	7	1

INDEX OF SHEETS

- Cover Sheet
- Summary of Quantities and Schedules
- Proposed Typical Cross Sections
- Plan & Profile Sheet
- 5-7. Cross Section Sheets

**STATE OF ILLINOIS
DEPARTMENT OF TRANSPORTATION
DIVISION OF HIGHWAYS**

**PROPOSED
HIGHWAY PLANS**

**F.A.S. ROUTE 2473
SECTION 10-00056-09-SP
ROPP RD (CH 39) REALIGNMENT
MCLEAN COUNTY
PROJECT NO. HRR-2473(150)
JOB NO. C-95-302-11**

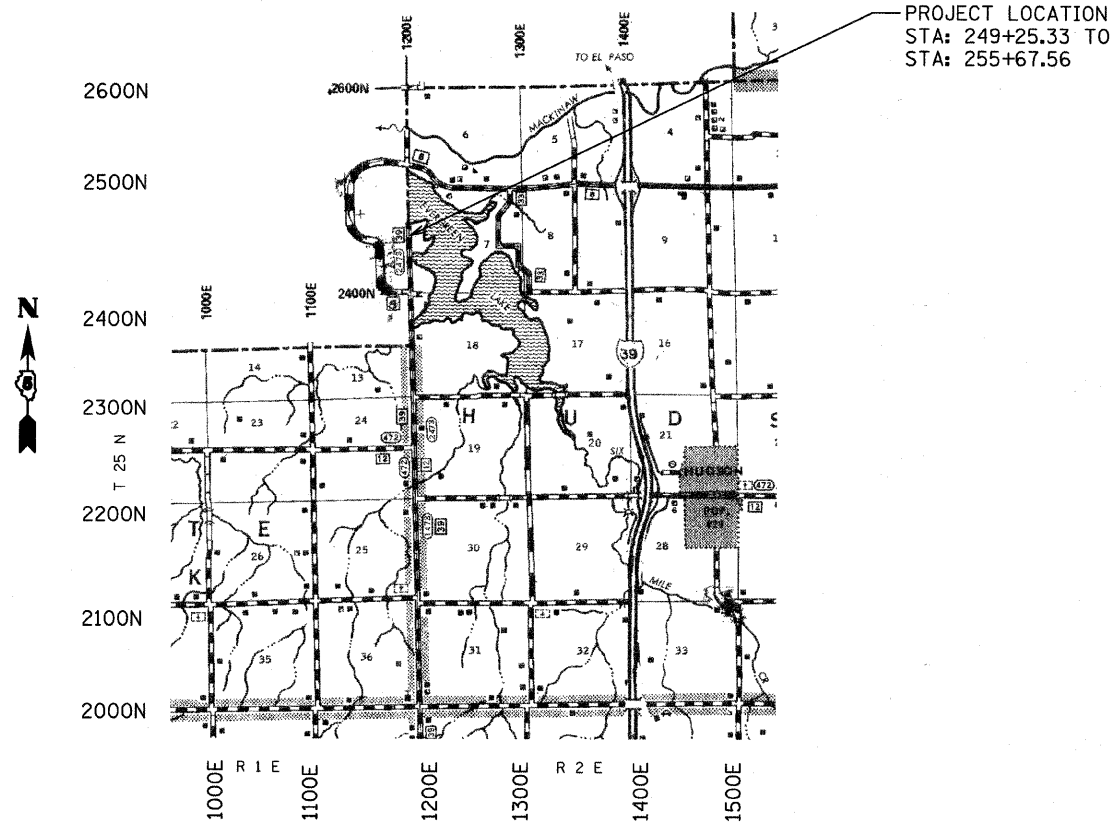
STATE STANDARD DETAILS

602306-03	INLET - TYPE B
604036-02	GRATE TYPE 8
701001-02	OFF-RD OPERATIONS, 2L, 2W, MORE THAN 15' AWAY
701006-03	OFF-RD OPERATIONS, 2L, 2W, 15' TO 24' FROM PAVEMENT EDGE
701011-02	OFF-RD MOVING OPERATIONS, 2L, 2W, DAY ONLY
701201-04	LANE CLOSURE, 2L, 2W, DAY
701301-04	LANE CLOSURE, 2L, 2W, SHORT TIME OPERATIONS
701326-04	LANE CLOSURE, 2L, 2W, PAVEMENT WIDENING
701901-01	TRAFFIC CONTROL DEVICES

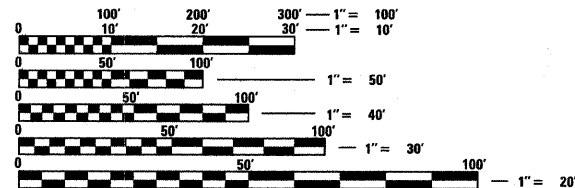
UTILITIES

CORN BELT ELECTRIC

FRONTIER TELEPHONE



PROJECT LOCATION
STA: 249+25.33 TO
STA: 255+67.56



FULL SIZE PLANS HAVE BEEN PREPARED USING STANDARD ENGINEERING SCALES. REDUCED SIZED PLANS WILL NOT CONFORM TO STANDARD SCALES. IN MAKING MEASUREMENTS ON REDUCED PLANS, THE ABOVE SCALES MAY BE USED.

J.U.L.I.E.
JOINT UTILITY LOCATION INFORMATION FOR EXCAVATION
1-800-892-0123
OR 811

CONTRACT NO. 91448

APPROXIMATE SCALE: 0 1 MILE
FUNCTIONAL CLASSIFICATION : MAJOR COLLECTOR ADT 100
GROSS LENGTH = 624.23 FT. = 0.122 MILE
NET LENGTH = 624.23 FT. = 0.122 MILE
3R IMPROVEMENT



ILLINOIS PROFESSIONAL ENGINEER #57636
EXPIRES 11-30-11

**McLEAN COUNTY
HIGHWAY DEPARTMENT**

APPROVED JAN 4 20 11
[Signature]
COUNTY ENGINEER

PASSED 1/21 20 11
[Signature]
DISTRICT FIVE ENGINEER OF
LOCAL ROADS & STREETS

Releasing For Bid Based on Limited Review January 21, 2011 20
[Signature]
DEPUTY DIRECTOR OF HIGHWAYS,
REGION THREE ENGINEER

STATE OF ILLINOIS
DEPARTMENT OF TRANSPORTATION

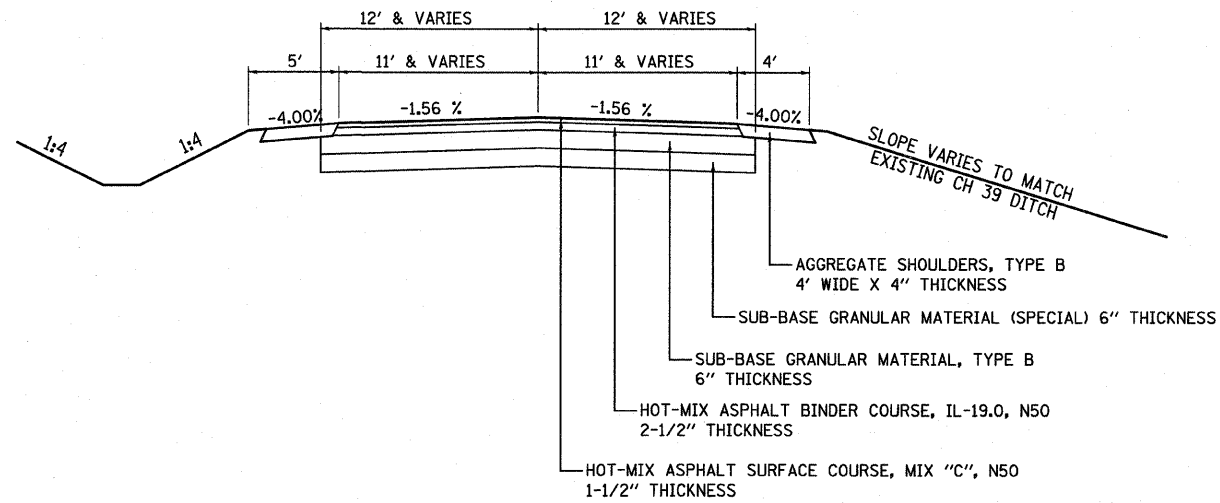
**PRINTED BY THE AUTHORITY
OF THE STATE OF ILLINOIS**

SUMMARY OF QUANTITIES

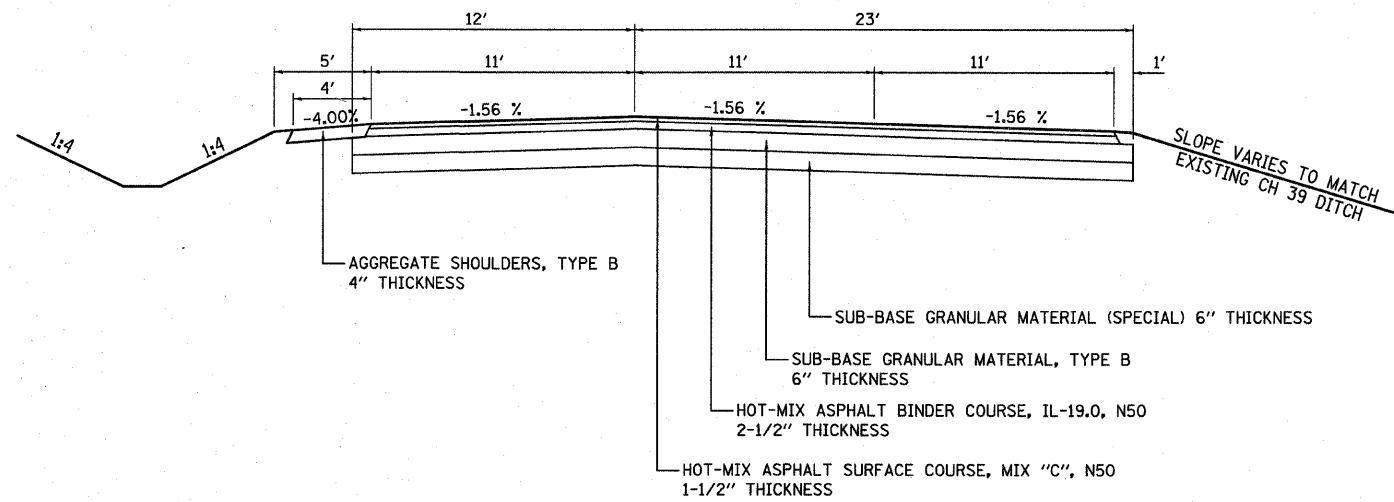
ITEM NUMBER	ITEM	QUANTITY	UNIT
20200100	EARTH EXCAVATION	800	CU YDS
21001000	GEOTECHNICAL FABRIC FOR GROUND STABILIZATION	1635	SQ YDS
28000400	PERIMETER EROSION BARRIER	663	FOOT
28000500	INLET AND PIPE PROTECTION	1	EACH
31101000	SUB-BASE GRANULAR MATERIAL, TYPE B	630	TON
X3112800	SUB-BASE GRANULAR MATERIAL (SPECIAL)	615	TON
40300100	BITUMINOUS MATERIALS (PRIME COAT)	680	GALLON
40600100	BITUMINOUS MATERIALS (PRIME COAT)	85	GALLON
40603080	HOT-MIX ASPHALT BINDER COURSE, IL-19.0, N50	250	TON
40603310	HOT-MIX ASPHALT SURFACE COURSE, MIX "C", N50	150	TON
44000100	PAVEMENT REMOVAL	1002	SQ YDS
48101200	AGGREGATE SHOULDERS, TYPE B	105	TON
542C1069	PIPE CULVERTS, CLASS C, TYPE 2, 24"	66	FOOT
54215559	METAL END SECTIONS 24"	1	EACH
60240395	INLET, TYPE B	1	EACH
67100100	MOBILIZATION	1	L SUM
X7010216	TRAFFIC CONTROL & PROTECTION (SPECIAL)	1	L SUM

NEW ROAD EARTHWORK SCHEDULE						
STATION	AREAS SQUARE FEET		VOLUMES CUBIC YARDS		CUMULATIVE VOLUMES CUBIC YARDS	
	CUT	FILL	CUT	FILL	CUT	FILL
249+25.23	0	0				
249+50	3.84	.79	1.8	0.4	1.8	0.4
250+00	11.72	6.54	14.4	6.8	16.2	7.1
250+20.71	12.75	8.96	9.4	5.9	25.6	13.1
250+50	40.47	9.84	28.9	10.2	54.4	23.3
251+00	113.22	8.81	142.3	17.3	196.7	40.6
251+50	128.68	0	224.0	8.2	420.7	48.7
252+00	105.1	0	216.5	0	637.2	48.7
252+30.58	48.56	0	87	0	724.2	48.7
252+50	13.91	6.38	22.5	2.3	746.7	51
253+00	0	117.62	12.9	114.8	759.5	165.8
253+50	0	197.47	0	291.8	759.5	457.6
254+00	.32	36.76	0.3	216.9	759.8	674.5
254+50	13.55	17.70	12.8	50.4	772.7	724.9
255+00	7.17	2.92	19.2	19.1	791.9	744.0
255+50	0	0	6.6	2.7	798.5	746.7
			0	0	798.5	746.7
TOTALS					799	747

TYPICAL CROSS SECTION #1
STA: 249+25.33 TO STA: 253+41



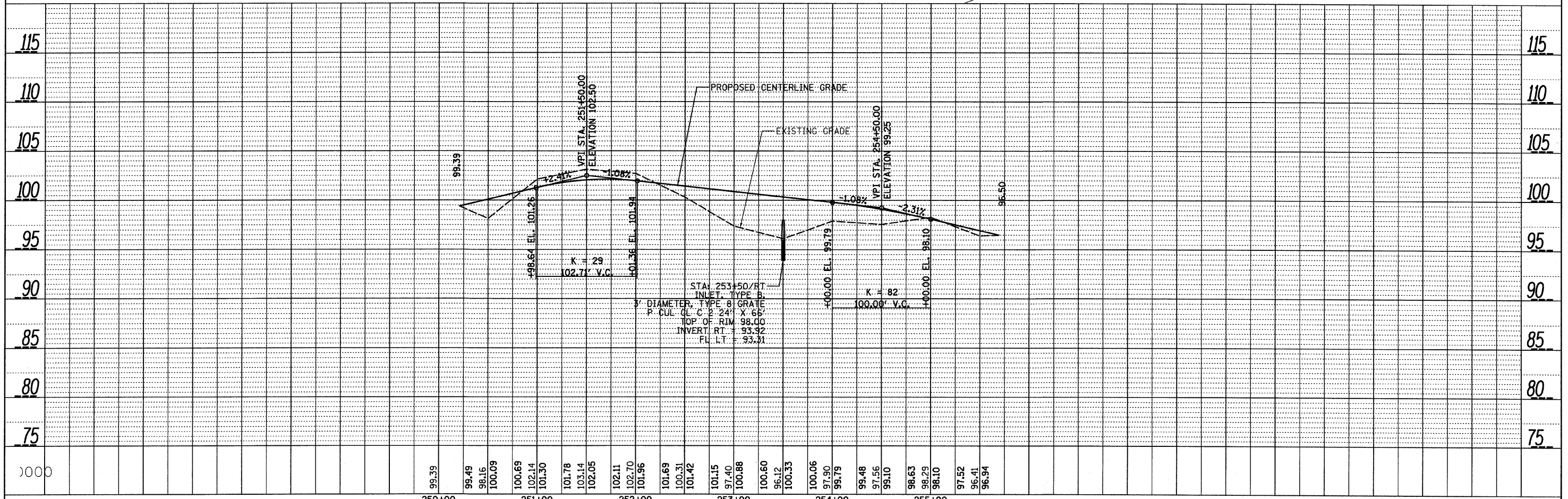
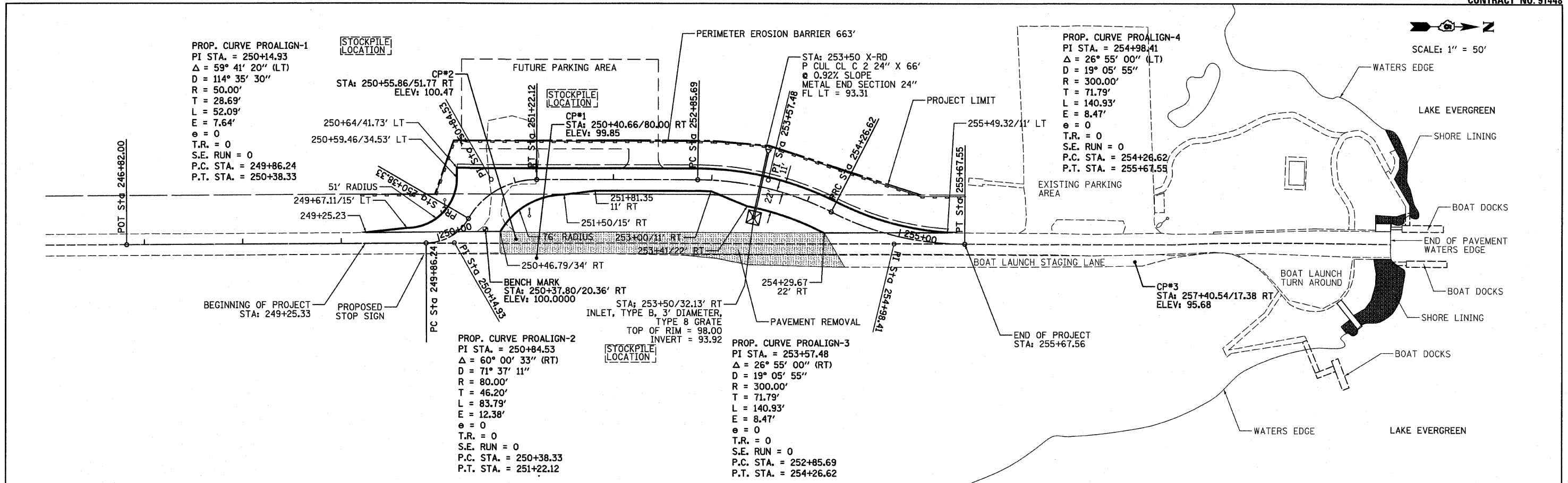
TYPICAL CROSS SECTION #2
STA: 253+41 TO STA: 255+67.56



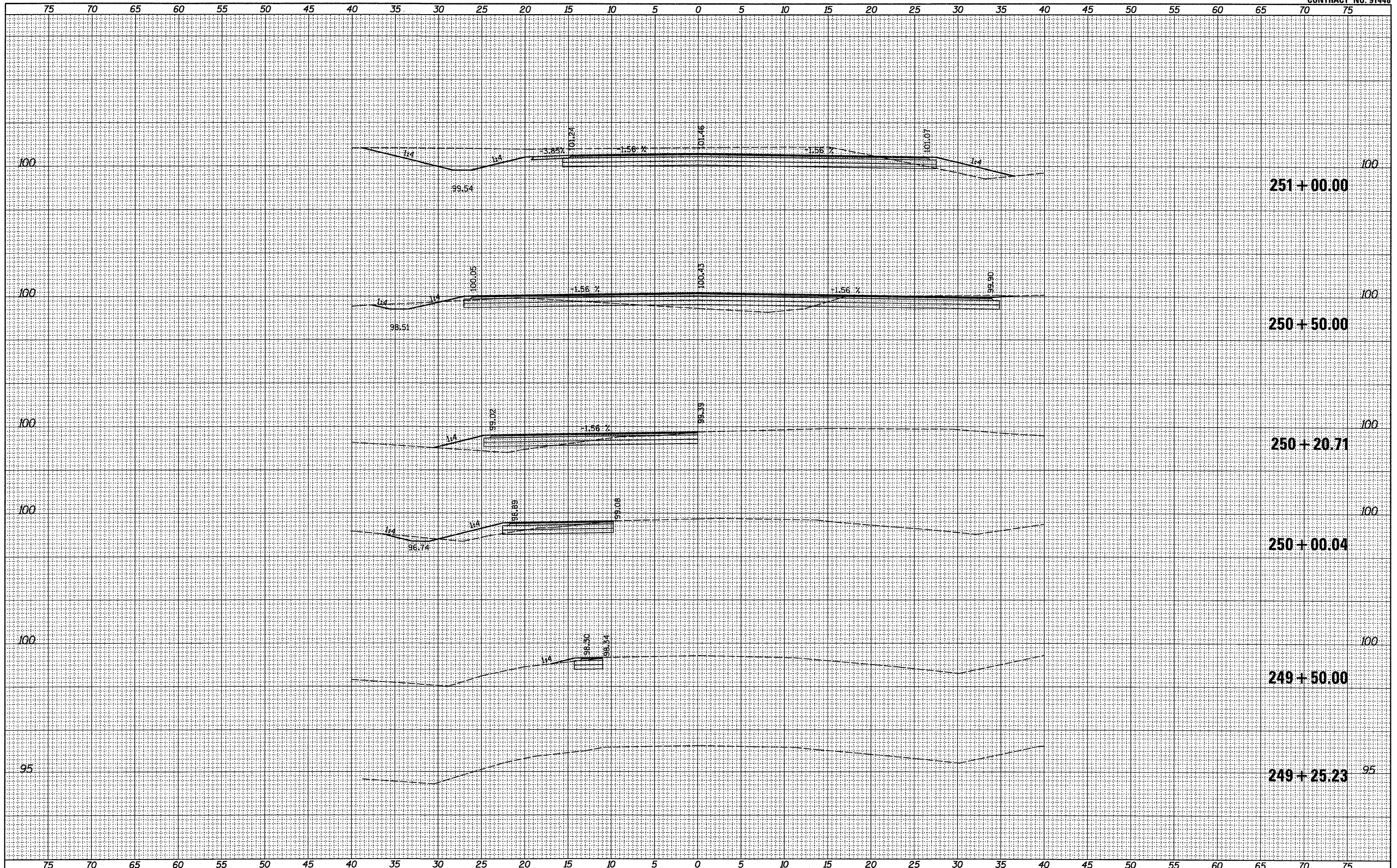
FILE NAME = #FILEL#	USER NAME = #USER#	DESIGNED - ---	REVISED - ---	STATE OF ILLINOIS DEPARTMENT OF TRANSPORTATION	PROPOSED CROSS SECTIONS			F.A.S. RTE. 2473	SECTION 10-00056-09-SP	COUNTY McLEAN	TOTAL SHEETS 7	SHEET NO. 3
PLOT SCALE = #SCALE#								SCALE: NO. SCALE SHEET NO. 1 OF 1 SHEETS STA. 249+25.23 TO STA. 255+49.32			CONTRACT NO. 91448	
PLOT DATE = #DATE#								ILLINOIS FED. AID PROJECT				
		CHECKED - ---	REVISED - ---									
		DATE - ---	REVISED - ---									

PLAN	SURVEYED	DATE
	BY	
	NOTED	
	CHECKED	
	DATE	
	NO.	

PROFILE	SURVEYED	DATE
	BY	
	NOTED	
	CHECKED	
	DATE	
	NO.	



FILE NAME =	USER NAME = #USER#	DESIGNED -	REVISED -	STATE OF ILLINOIS DEPARTMENT OF TRANSPORTATION	PLAN & PROFILE	F.A.S. RTE.	SECTION	COUNTY	TOTAL SHEETS	SHEET NO.
#FILE#		DRAWN -	REVISED -			2473	10-00056-09-SP	McLEAN	7	4
		CHECKED -	REVISED -			COUNTY HIGHWAY 12		CONTRACT NO. 91448		
		DATE -	REVISED -			ILLINOIS FED. AID PROJECT				



DATE _____ BY _____

ORIGINAL SURVEY _____ SURVEYED _____

NOTE BOOK _____ PLOTTED _____

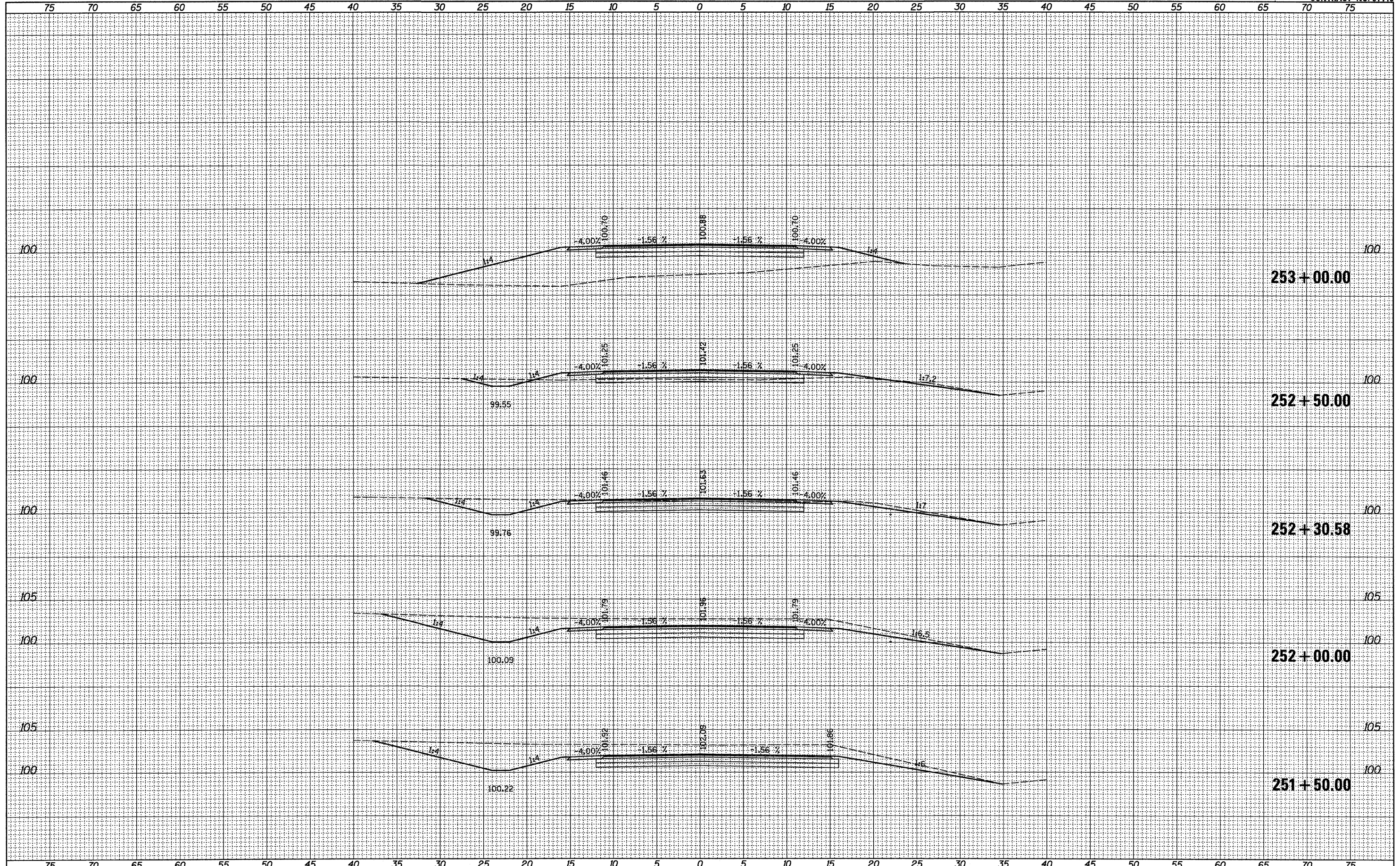
NO. _____ AREAS CHECKED _____

DATE _____ BY _____

ORIGINAL SURVEY _____ SURVEYED _____

NOTE BOOK _____ PLOTTED _____

NO. _____ AREAS CHECKED _____

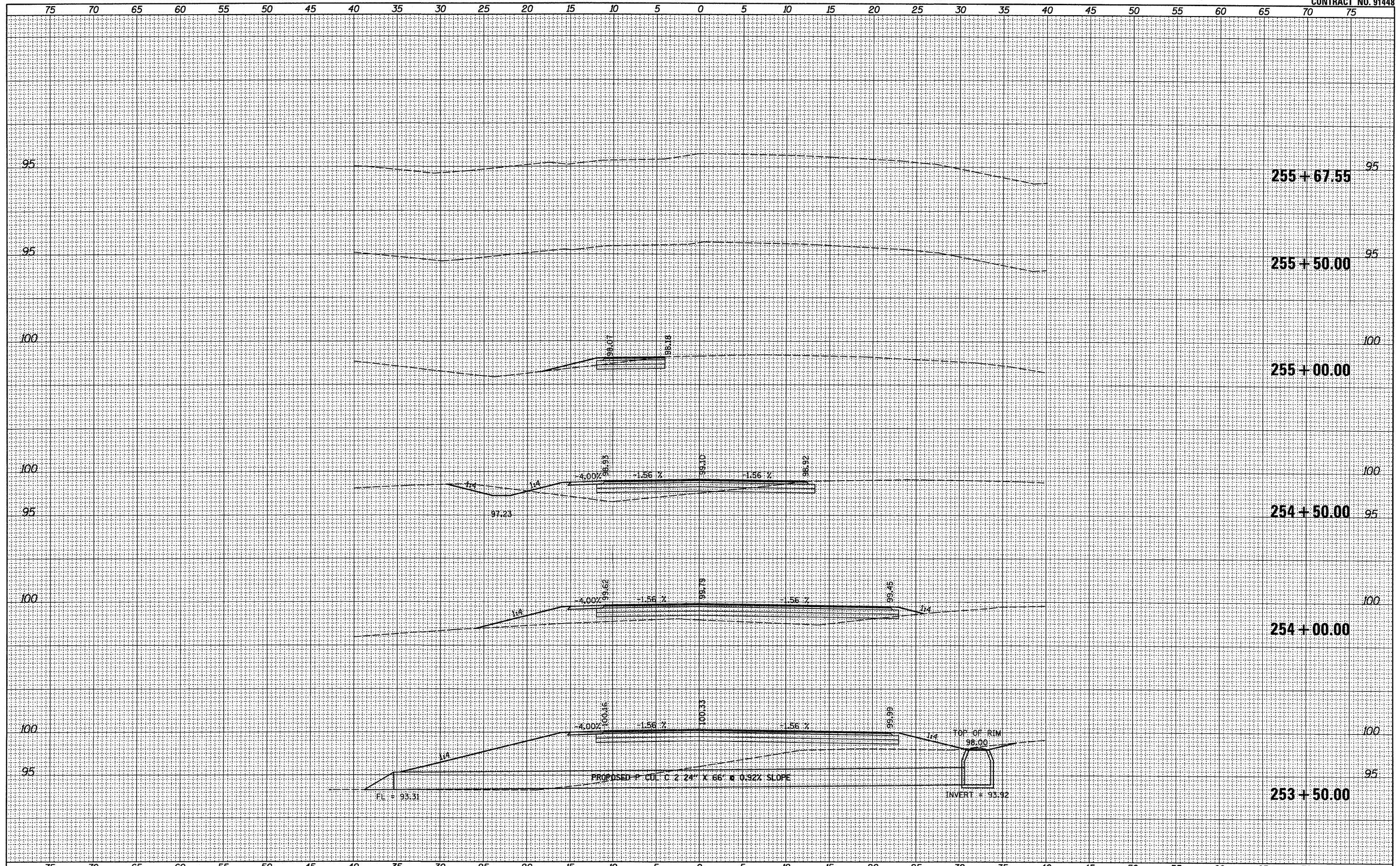


FINAL SURVEY NO.	DATE
SURVEYED	BY
PLOTTED	
TEMPLATE	
NOTE BOOK	
AREAS CHECKED	

ORIGINAL SURVEY NO.	DATE
SURVEYED	BY
PLOTTED	
TEMPLATE	
NOTE BOOK	
AREAS CHECKED	

FINAL SURVEY	SURVEYED	BY	DATE
NOTE BOOK	PLOTTED		
NO.	TEMPLATE		
	AREAS		
	CHECKED		

ORIGINAL SURVEY	SURVEYED	BY	DATE
NOTE BOOK	PLOTTED		
NO.	TEMPLATE		
	AREAS		
	CHECKED		



FILE NAME =	USER NAME = #USER#	DESIGNED -	REVISED -	STATE OF ILLINOIS DEPARTMENT OF TRANSPORTATION	CROSS SECTIONS			F.A.S. RTE.	SECTION	COUNTY	TOTAL SHEETS	SHEET NO.
#FILE#		DRAWN -	REVISED -		SCALE: 1" = 5'	SHEET NO. 3 OF 3 SHEETS	STA. 253+50.00 TO STA. 255+67.55	2473	10-00056-09-RS	MCLEAN	7	7
		CHECKED -	REVISED -					COUNTY HIGHWAY 39		CONTRACT NO. 91448		
		DATE -	REVISED -					ILLINOIS FED. AID PROJECT				