

F.A.U. RTE.	SECTION	COUNTY	TOTAL SHEETS	SHEET NO.
7982	*	SANGAMON	63	1

\* 10-00447-04-PV

UTILITY NOTE

THE LOCATIONS OF THOSE BURIED AND ABOVEGROUND UTILITIES SHOWN ARE APPROXIMATE, ARE SHOWN FOR CONTRACTOR INFORMATIONAL USE ONLY, AND ARE NOT TO BE REFERENCED FOR CONSTRUCTION PURPOSES. THE IMPLIED PRESENCE OR ABSENCE OF UTILITIES IS NOT TO BE CONSTRUED BY THE OWNER, ENGINEER, CONTRACTOR, OR SUBCONTRACTORS TO BE AN ACCURATE AND COMPLETE REPRESENTATION OF UTILITIES THAT MAY OR MAY NOT EXIST ON THE CONSTRUCTION SITE. BURIED AND ABOVEGROUND UTILITY LOCATION, IDENTIFICATION, AND MARKING ARE THE SOLE RESPONSIBILITY OF THE CONTRACTOR. REROUTING, DISCONNECTION, PROTECTION, ETC. OF ANY UTILITIES MUST BE COORDINATED BETWEEN THE CONTRACTOR, UTILITY COMPANY, AND OWNER. SITE SAFETY, INCLUDING THE AVOIDANCE OF HAZARDS ASSOCIATED WITH BURIED AND ABOVEGROUND UTILITIES, REMAIN THE SOLE RESPONSIBILITY OF THE CONTRACTOR.

J.U.L.I.E.  
JOINT UTILITY LOCATION INFORMATION FOR EXCAVATION  
1-800-892-0123

SEE SHEET 3 FOR LIST OF UTILITY COMPANIES

STATE OF ILLINOIS  
DEPARTMENT OF TRANSPORTATION  
DIVISION OF HIGHWAYS

**PROPOSED HIGHWAY PLANS**  
ILLINOIS TRANSPORTATION ENHANCEMENT PROGRAM  
(FOR CONSTRUCTION SECTION)  
FAU ROUTE 7982 (CAPITOL AVENUE)  
SECTION 10-00447-04-PV  
PROJECT HPP-TE-00D6(099)  
CITY OF SPRINGFIELD, SANGAMON COUNTY  
JOB NUMBER C-96-208-11

FOR INDEX OF SHEETS, SEE SHEET NO. 2  
FOR LIST OF STANDARDS, SEE SHEET NO. 2



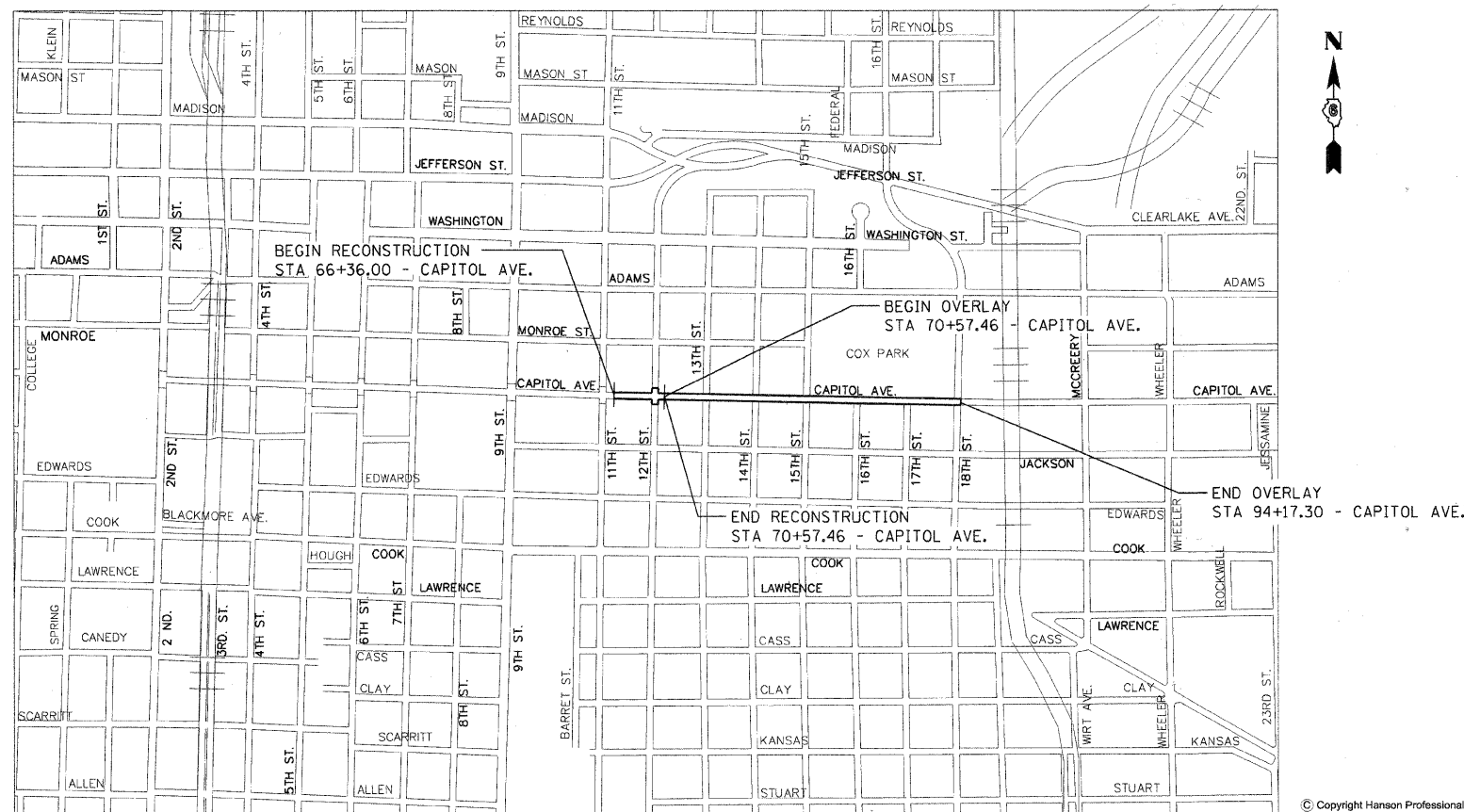
LOCATION OF SECTION INDICATED THUS: -

TYPE OF IMPROVMENT / PROJECT DESCRIPTION

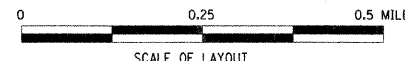
THE RECONSTRUCTION SECTION BETWEEN 11TH STREET AND 12TH STREET CONSISTS OF THE REMOVAL OF ALL EXISTING PAVEMENT, SIDEWALK, LIGHTING AND STREET APPURTENANCES IN THE EXISTING RIGHT OF WAY. AT THE INTERSECTION OF 12TH STREET THE RECONSTRUCTION EXTENDS TO THE ADJACENT STREETS APPROXIMATELY 30 FEET AND THE CURB LINES ARE MOVED IN, REMOVING PARKING IN THESE AREAS. THE PROPOSED IMPROVEMENTS CONSIST OF THE INSTALLATION OF CONCRETE PAVERS IN THE MID-BLOCK AREAS, THE ADJACENT FLEXIBLE USE AREAS AND THE CROSSWALKS, SEVERAL PLANTING BEDS LOCATED ALONG THE CORRIDOR AND INTERSECTIONS AND ADJACENT TO ALLEY AND PARKING ENTRANCES.

INSTALLATION OF LIGHTING AND CONSTRUCTION OF A ROUNDABOUT AT THE 12TH STREET CAPITOL AVENUE INTERSECTION.

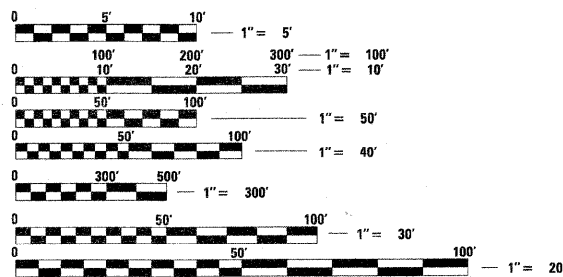
THE OVERLAY SECTION BETWEEN 12TH STREET AND MARTIN LUTHER KING DRIVE CONSISTS OF THE MILLING AND OVERLAY OF THE EXISTING STREET TO THE RADIUS RETURNS OF THE ADJACENT STREETS, CURB AND SIDEWALK REPAIRS, BURYING OF OVERHEAD UTILITIES ALONG THE NORTH SIDE OF CAPITOL AVENUE AND INSTALLATION OF ADDITIONAL LIGHTING AND TREES.



LENGTH RECONSTRUCTION= 421.46 FT. = 0.080 MILES  
LENGTH OVERLAY= 2,359.84 FT. = 0.447 MILES  
NET LENGTH OF PROJECT = 2,781.3 FT. = 0.527 MILES



CONTRACT NO. 93544



FULL SIZE PLANS HAVE BEEN PREPARED USING STANDARD ENGINEERING SCALES. REDUCED SIZED PLANS WILL NOT CONFORM TO STANDARD SCALES. IN MAKING MEASUREMENTS ON REDUCED PLANS, THE ABOVE SCALES MAY BE USED.

DESIGN DESIGNATION: URBAN COLLECTOR (ADT=1840(27))  
FAU ROUTE 7982 CAPITOL AVENUE RECONSTRUCTION

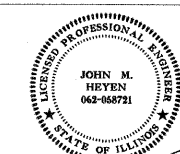
DESIGN SPEED: 30 M.P.H.  
CAPITOL AVENUE RECONSTRUCTION

© Copyright Hanson Professional Services Inc. 2011



Massie & Massie  
Associates  
Inc.

FERRY AND ASSOCIATES • ARCHITECTS



SIGNATURE: *John M. Heynen*  
DATE SIGNED: 1-20-2011  
LIC. EXP. DATE: 11-30-2011

APPROVED *[Signature]* 2/10/2011  
MAYOR

APPROVED *[Signature]* 02/08/2011  
CITY ENGINEER

APPROVED *[Signature]* 2/16/2011  
DISTRICT LOCAL ROADS AND STREETS ENGINEER

APPROVED *[Signature]* 2-15-2011  
DISTRICT CONSTRUCTION ENGINEER

APPROVED *[Signature]* 2/16/2011  
DEPUTY DIRECTOR OF HIGHWAYS, REGION FOUR ENGINEER

PRINTED BY THE AUTHORITY OF THE STATE OF ILLINOIS

1DOT DISTRICT 6  
PROJECT ENGINEER  
STUDY TEAM ENGINEER

DATE: 02/23/07  
DRAWN: DAP  
CHECKED: MH  
REVIEWED: MH

FILE NAME: I:\P2\proj\02260414\CA00\Road\Map\Information\Sheet\Section\_3-11.th - 1B\A.C.001.CDW.dgn  
PLOT SCALE: 1:2000  
USER NAME: JohnM8914