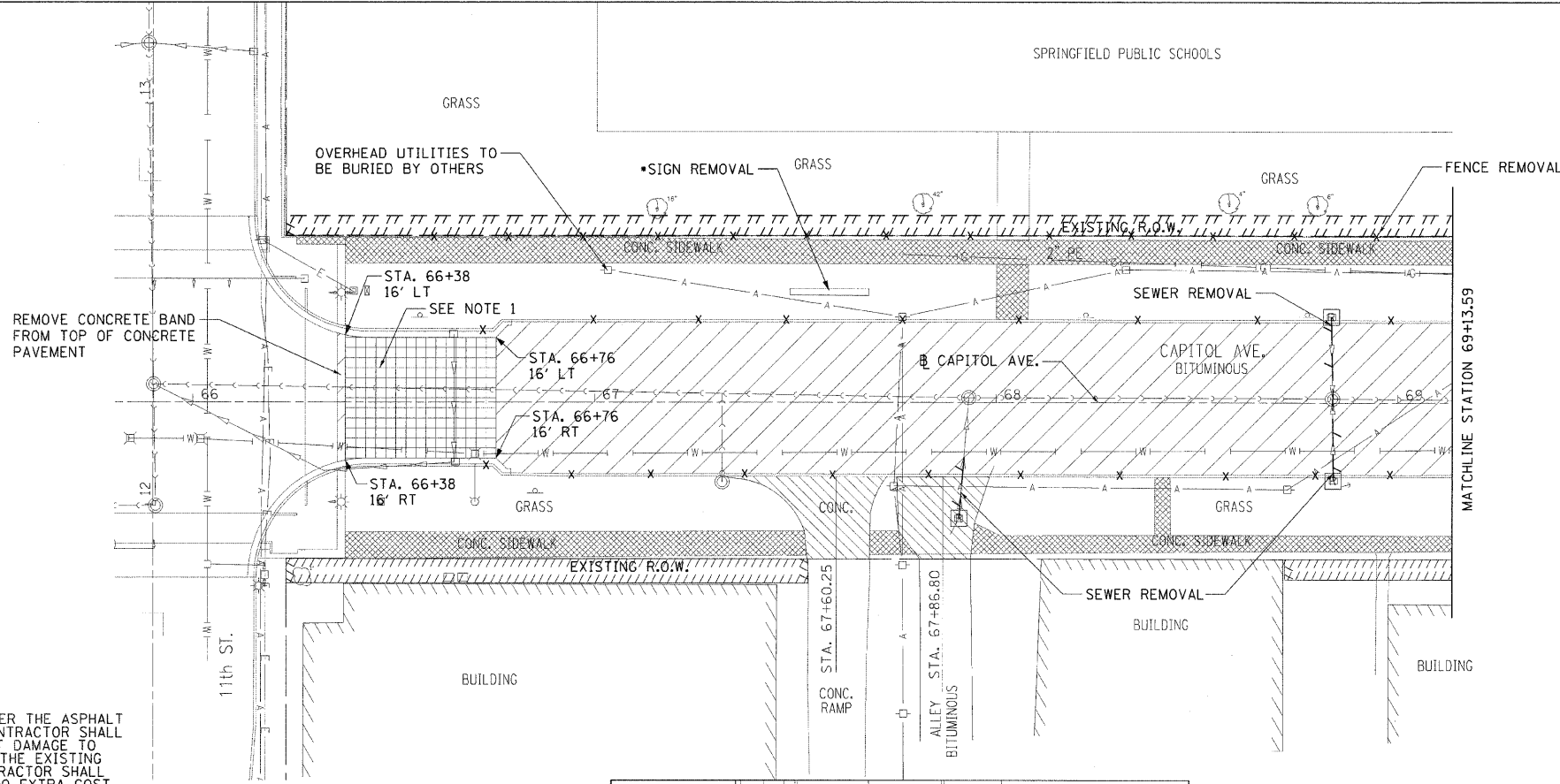


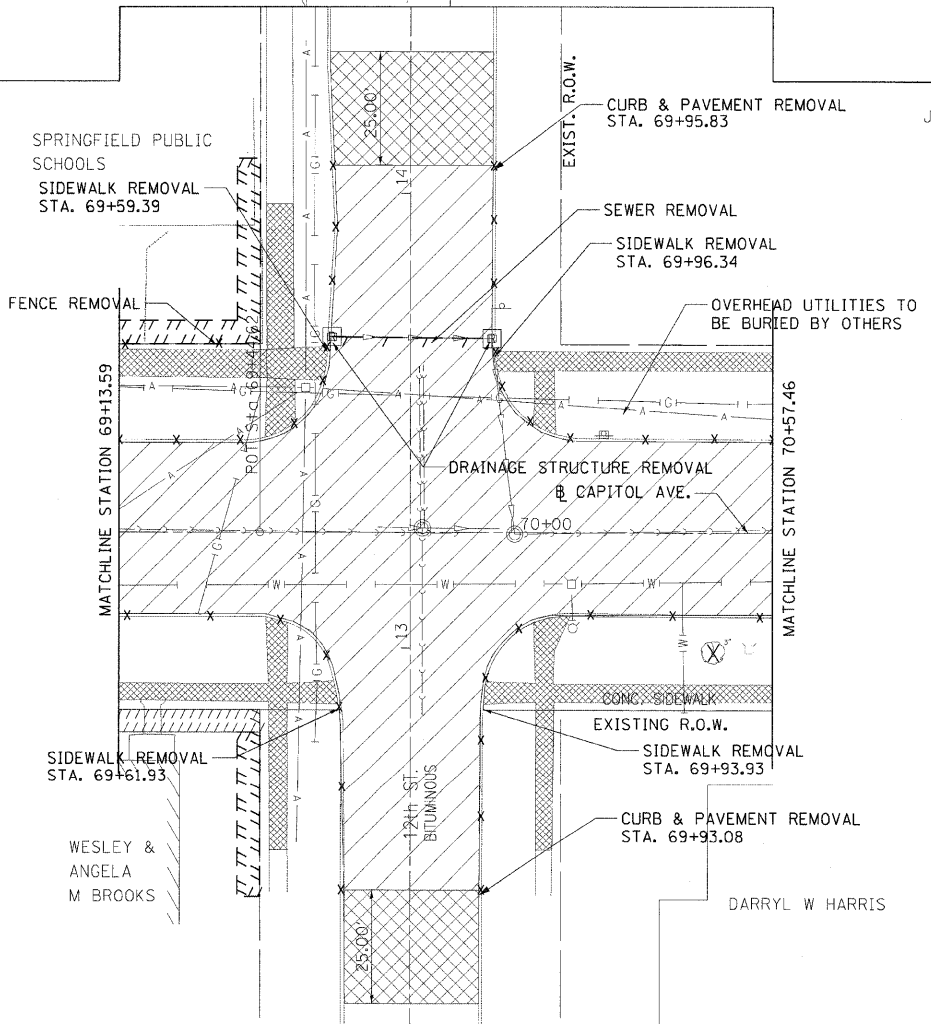
F.A.U. RTE.	SECTION	COUNTY	TOTAL SHEETS	SHEET NO.
7982	*	SANGAMON	63	24
STA.		TO STA.		
FED. ROAD DIST. NO.		ILLINOIS FED. AID PROJECT		
10-00447-04-PV		CITY OF SPRINGFIELD		



LEGEND

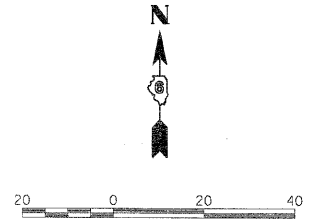
- CONCRETE SIDEWALK REMOVAL
 - CURB & GUTTER REMOVAL
 - PAVEMENT REMOVAL
 - BRICK SIDEWALK REMOVAL
 - BITUMINOUS REMOVAL
 - DRIVEWAY PAVEMENT REMOVAL
 - BITUMINOUS MILLING
 - TREE REMOVAL
 - TRAFFIC SIGNAL POST REMOVAL
 - SEWER REMOVAL
 - DRAINAGE STRUCTURE REMOVAL
- NOTE: THESE ITEMS TO BE PAID FOR AS SPECIAL EXCAVATION (CU. YD.)

NOTE 1 - THE CONCRETE PAVEMENT UNDER THE ASPHALT WAS PREVIOUSLY CONSTRUCTED. THE CONTRACTOR SHALL REMOVE THE EXISTING ASPHALT WITHOUT DAMAGE TO THE EXISTING CONCRETE SLAB. SHOULD THE EXISTING CONCRETE SLAB BE DAMAGED, THE CONTRACTOR SHALL REPLACE THE CONCRETE PAVEMENT AT NO EXTRA COST TO THE CONTRACT. THIS WORK SHALL BE INCLUDED IN THE COST FOR SPECIAL EXCAVATION.



JENNIFER L LEWIS

DARRYL W HARRIS



LAYOUT DATE: 00/00/00
 DRAWN: ZZZ 00/00/00
 REVIEWED: MH 03/19/07
 PLOT DATE: 01/11/2011
 FILE NAME: I:\02\pba\025281A\CADD\Road\Microstation\Sheet\Section_3\11th - 18th\c-3081.REM.11-12.mcd
 PLOT SCALE: 20.0000 / in.
 USER NAME: John08944