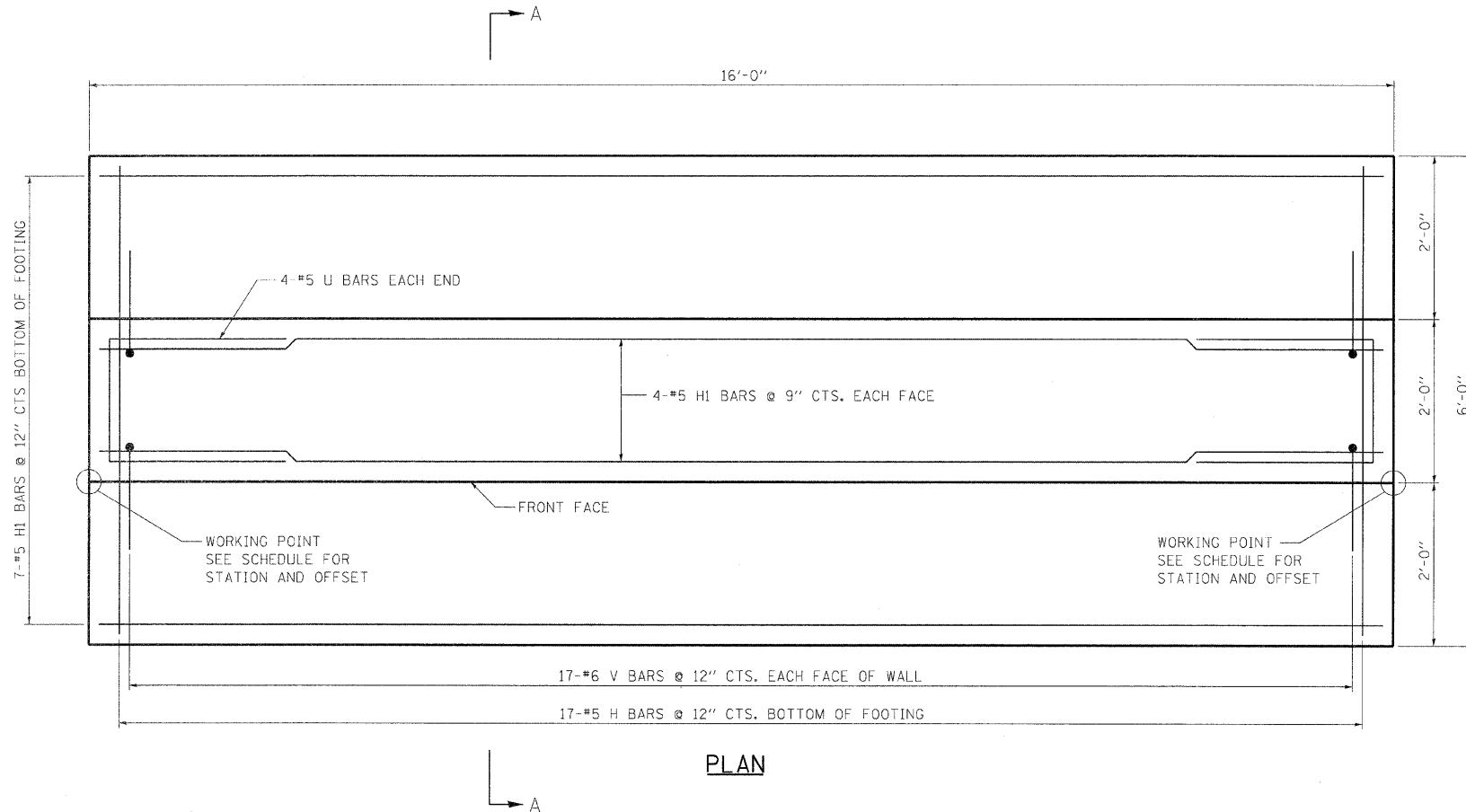
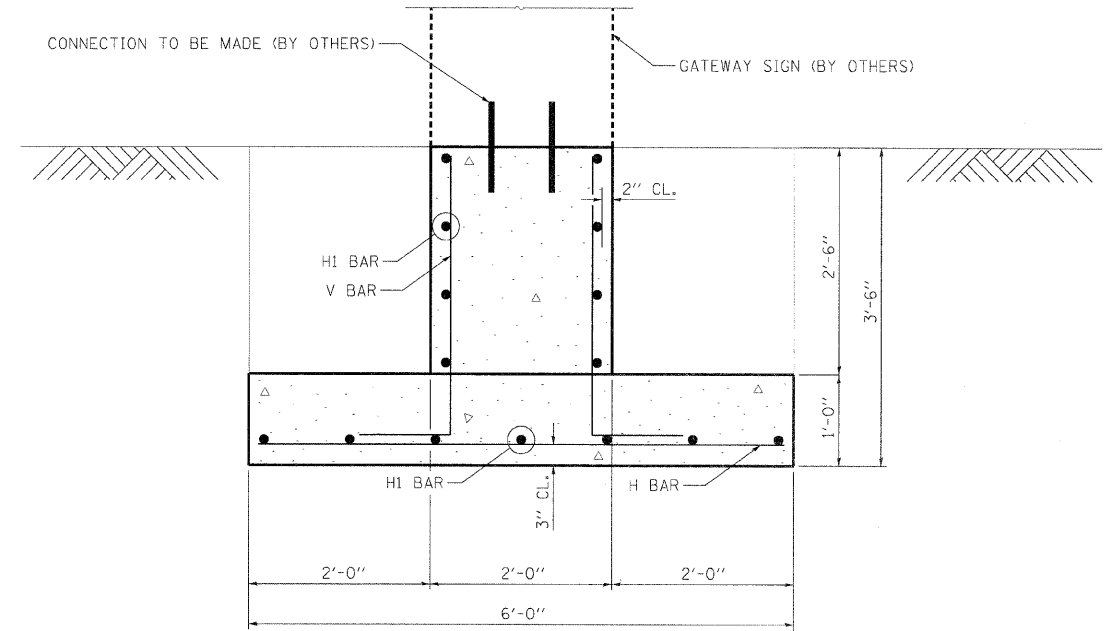


F.A.U. RTE.	SECTION	COUNTY	TOTAL SHEETS	SHEET NO.
7982		SANGAMON	63	55
STA.		TO STA.		
FED. ROAD DIST. NO.		ILLINOIS FED. AID PROJECT		
10-00447-04-PV		CITY OF SPRINGFIELD		



PLAN



SECTION A-A

MIN. BAR LAPS

#5 BAR: 2'-2"

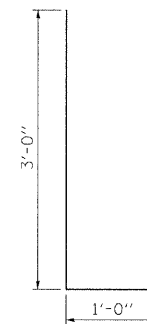
NOTES:
SEE GATEWAY SIGN FOUNDATION SCHEDULE AND STREETSCAPE PLANS FOR LOCATIONS OF FOUNDATIONS.

BILL OF MATERIAL
ONE GATEWAY SIGN FOUNDATION

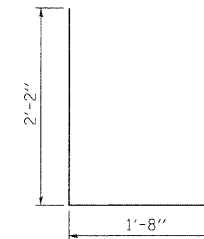
BAR	NO.	SIZE	LENGTH	SHAPE
H	17	#5	5'-8"	—
HI	15	#5	15'-8"	—
U	8	#5	6'-0"	⊔
V	34	#6	4'-0"	⊔
Reinforcement Bars		Pounds	600	
Concrete Structures		Cu. Yd.	6.5	
Structure Excavation		Cu. Yd.	26	

2 GATEWAY SIGN FOUNDATIONS REQUIRED.

FROM STATION OFFSET	TO STATION OFFSET	REINFORCEMENT BARS	CONCRETE STRUCTURES	STRUCTURE EXCAVATION
		POUNDS	CU YD	CU YD
93+26.00, -20.37'	93+37.32, -31.66'	600	6.5	26
93+27.57, 20.72'	93+28.91, 32.01'	600	6.5	26
TOTAL GATEWAY SIGN FOUNDATION QUANTITIES		1200	13.0	52



V BAR



U BAR

REVISIONS	
NAME	DATE

ILLINOIS DEPARTMENT OF TRANSPORTATION
GATEWAY SIGN FOUNDATION
FAU RTE 7982 CAPITOL AVE
SEC NO. 10-00447-04-PV
SANGAMON COUNTY, ILLINOIS

SCALE: VERT. DATE 11/19/10
DRAWN BY: DAP
CHECKED BY: MNM



LAYOUT DATE: 11/28/09
DRAWN: DAB 11/17/10
REVIEWED: MNM 11/19/10
PLT DATE: 11/19/10
FILE NAME: I:\2010\10-00447-04-PV\Roadway\Structure\Sheet\Structure\Section_311th - 18th_Ve_889_Gateway_Mon_Foundation.dgn
PLT SCALE: 1/8" = 1'-0"
USER NAME: Jahn88944