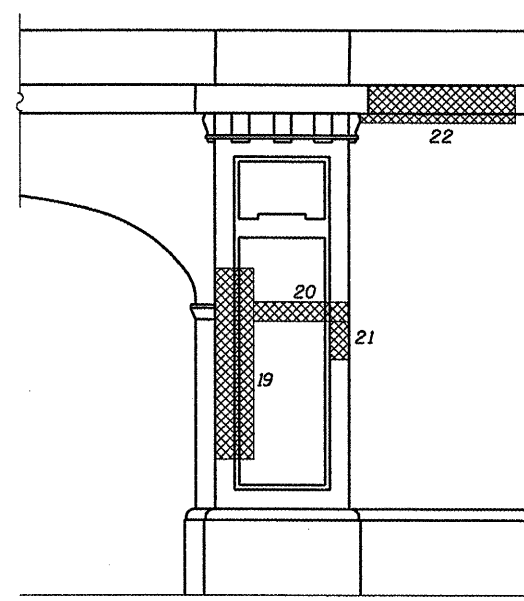


STRUCTURE REPAIR PLAN AT FLOOR BEAMS
(Spans 2-4)

STRUCTURAL REPAIR OF CONCRETE
SPAN 2-4

Patch No.	Vert. or Horiz.	Dimensions	Area (SQ. FT.)
1	V	0.75x4.00'	3.00
2	H	1.00x4.50'	4.50
3	V	1.00x9.50'	9.50
4	V	(5.50x7.00')/2*	19.25
5	H	1.00x1.00'	1.00
6	H	1.00x1.00'	1.00
7	H	1.00x1.00'	1.00
8	V	2.00x3.00'	6.00
9	H	7.50x1.00'	7.50
10	H	2.00x1.00'	2.00
11	V	3.00x1.00'	3.00
12	V	3.00x2.50'	7.50
13	V	0.50x3.00'	1.50
14	V	6.00x1.50'	9.00
15	V	(3.00x1.00')/2*	1.50
16	H	6.00x1.00'	6.00
17	H	3.00x0.67'	2.00
18	V	1.00x1.00'	1.00
19	V	10.00x2.00'	20.00
20	V	6.00x1.00'	6.00
21	V	2.00x1.00'	2.00
22	V	8.00x2.00'	16.00
Subtotal of Vertical Repair Areas			105.25
Subtotal of Horizontal Repair Areas			25.00
Subtotal			130.25

* Indicates a triangular repair area



REPAIR AT SOUTH FACE OF PIER 5

LEGEND

- Indicates Area of Horizontal Structural Repair
- Indicates Area of Vertical Structural Repair

STRUCTURE REPAIR DETAILS
SPANS 2-4
VACHEL LINDSAY BRIDGE REHABILITATION
LONG BAY DRIVE OVER LAKE SPRINGFIELD
SPRINGFIELD, ILLINOIS

CEC Cummins Engineering Corporation <small>Civil and Structural Engineering</small>	JOB = 2207	DESIGNED A.A.N.
	FILE = 2207structure.dgn	CHECKED M.D.C.
	DATE = 2/10/2011	DRAWN A.J.H.
		CHECKED M.D.C.

F.A.U. RTE.	SECTION	COUNTY	TOTAL SHEETS	SHEET NO.
8003	09-00469-00-BR	SANGAMON	36	15
CITY OF SPRINGFIELD		CONTRACT NO.		
FED. ROAD DIST. NO.	ILLINOIS FED. AID PROJECT	93546		