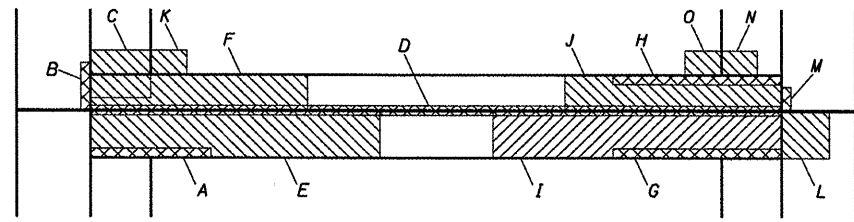


STRUCTURE REPAIR PLAN AT FLOOR BEAMS
(Span 10)



PLAN AT EXPANSION JOINT

LEGEND

- Indicates Area of Horizontal Structural Repair
- Indicates Area of Vertical Structural Repair

STRUCTURAL REPAIR OF CONCRETE
SPAN 10

Patch No.	Vert. or Horiz.	Dimensions	Area (SQ. FT.)
1	V	2.00'x1.00'	2.00
2	H	2.50'x1.33'	3.33
3	V	1.00'x1.00'	1.00
4	H	1.00'x1.33'	1.33
5	V	2.00'x1.00'	2.00
6	H	2.50'x0.83'	2.08
7	H	5.00'x5.00'	25.00
8	H	1.00'x0.83'	0.83
9	V	2.00'x2.00'	4.00
10	V	1.00'x1.00'	1.00
11	V	3.50'x1.00'	3.50
12	V	1.00'x1.00'	1.00
13	V	3.00'x1.00'	3.00
14	H	1.00'x1.00'	1.00
15	V	3.50'x0.50'	1.75
16	V	3.00'x1.00'	3.00
17	H	3.50'x1.33'	4.66
18	H	3.00'x5.00'	15.00
19	H	3.00'x5.00'	15.00
20	H	2.00'x1.33'	2.66
21	H	2.00'x1.33'	2.66
22	V	2.00'x1.33'	2.66
23	V	1.00'x1.33'	1.33
24	H	2.00'x0.50'	1.00
25	H	2.00'x1.00'	2.00
26	V	3.00'x1.00'	3.00
27	V	1.00'x1.00'	1.00
28	V	3.00'x1.00'	3.00
29	V	4.00'x2.00'	8.00
30	H	1.33'x1.00'	1.33
31	H	2.00'x1.00'	2.00
32	V	2.00'x4.00'	8.00
Subtotal of Vertical Repair Areas			49.24
Subtotal of Horizontal Repair Areas			79.88
Subtotal			129.12

STRUCTURAL REPAIR OF CONCRETE
SPAN 10

Patch No.	Vert. or Horiz.	Dimensions	Area (SQ. FT.)
A	V	2.67'x5.00'	13.35
B	V	2.00'x1.50'	3.00
C	V	4.50'x3.83'	17.24
D	V	28.67'x0.75'	21.50
E	H	12.00'x2.00'	24.00
F	H	9.00'x1.33'	11.97
G	V	7.00'x1.25'	8.75
H	V	7.00'x1.25'	8.75
I	V	2.50'x1.00'	2.50
J	H	12.00'x2.00'	24.00
K	H	9.00'x1.33'	11.97
L	H	2.00'x2.00'	4.00
M	V	1.00'x1.00'	1.00
N	H	1.50'x1.00'	1.50
O	H	1.50'x1.00'	1.50
Subtotal of Vertical Repair Areas			76.09
Subtotal of Horizontal Repair Areas			78.94
Subtotal			155.03

STRUCTURE REPAIR DETAILS
SPAN 10
VACHEL LINDSAY BRIDGE REHABILITATION
LONG BAY DRIVE OVER LAKE SPRINGFIELD
SPRINGFIELD, ILLINOIS

CEC Cummins Engineering Corporation <small>Civil and Structural Engineering</small>	JOB = 2207	DESIGNED	A.A.N.
	FILE = 2207structure.dgn	CHECKED	M.D.C.
	DATE = 2/10/2011	DRAWN	A.J.H.
		CHECKED	M.D.C.

F.A.U. RTE.	SECTION	COUNTY	TOTAL SHEETS	SHEET NO.
8003	09-00469-00-BR	SANGAMON	36	20
CITY OF SPRINGFIELD		CONTRACT NO.		
FED. ROAD DIST. NO.		ILLINOIS FED. AID PROJECT		

93546