

REMOVE AND REPLACE RAILING CAP STONE

Span No.	North (Ft.)	South (Ft.)
3		5
5	5	
9		9
11	5	
15	5	
16		5
18	5	
TOTAL	20	19

REMOVE AND REPLACE BASE STONE

Span No.	North (Ft.)	South (Ft.)
1	7.33	
2	6.25	
4	10.67	
5	10.67	
6	3.91	
7	13.67	
8	21.17	7.66
9	24.08	
10	20.58	3.92
11	10.17	
12	2.92	3.92
13	10.67	
14	6.25	
15	25.83	
16	16.58	2.92
TOTAL	190.75	18.42

REMOVE AND REPLACE FACE STONE

Span No.	North (Ft.)	South (Ft.)
1	3.67	1.50
2	8.83	
3		8.67
4	5.00	
5	5.00	
6	6.58	2.25
7	1.83	7.00
8	5.33	3.50
9	5.00	
10	1.83	7.00
11		3.50
12		13.08
13	5.33	3.50
14		2.58
15		4.08
16	0.00	7.75
17	6.33	2.50
18	8.83	
19	5.00	
20		3.58
21	8.83	
TOTAL	77.39	70.49

REMOVE AND REPLACE INTERMEDIATE STONE

Span No.	North (Ft.)	South (Ft.)
2	4.8	2.5
7	2.5	
13		2.5
14	2.5	
15		2.5
16		2.5
17		2.5
21		2.5
TOTAL	9.80	15.00

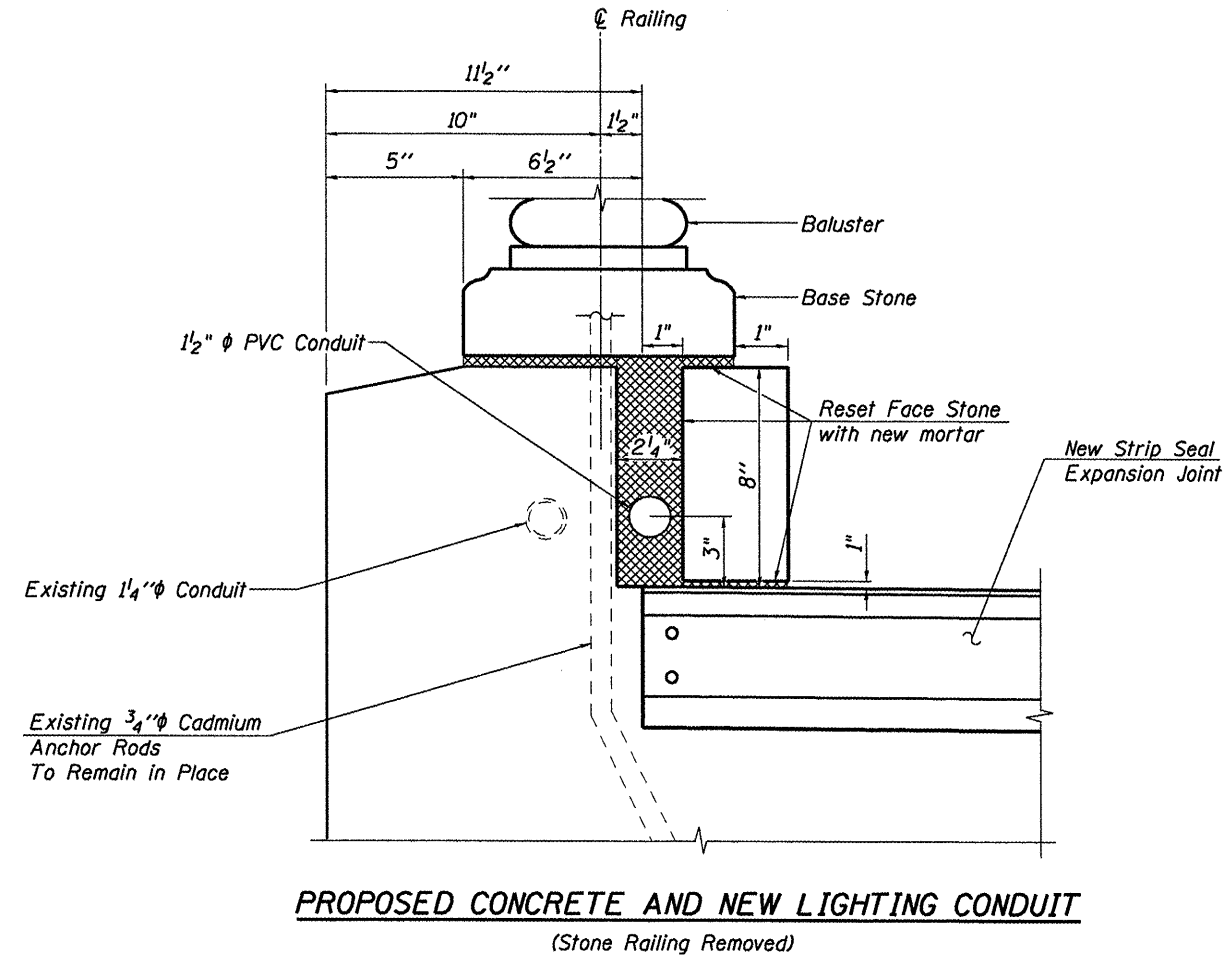
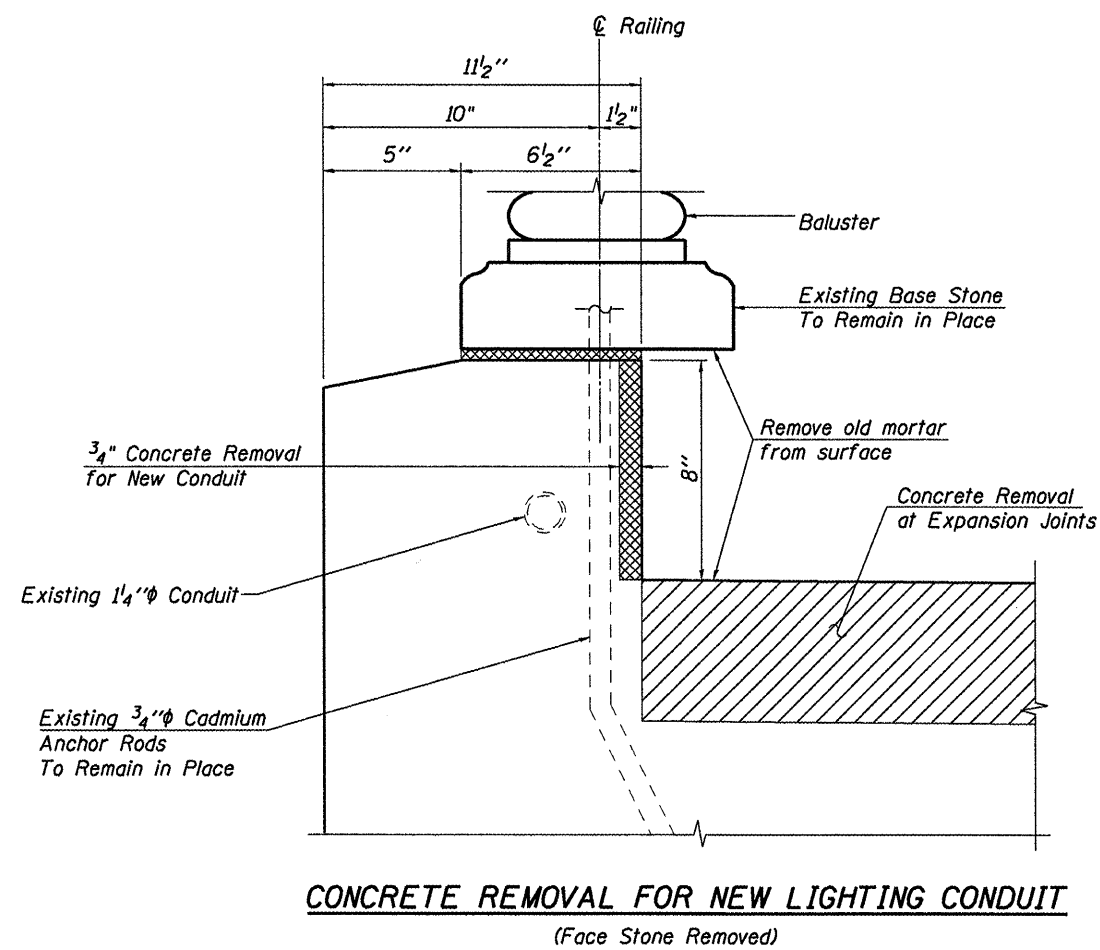
PIER STONE

Fill existing light openings with new material to match existing stone. See Special Provisions.

Required at 36 Locations

Opening Approx. 1'-2" x 1'-10" x 4" = 0.71 Cu. Ft.
x 36 Locations = 25.56 Cu. Ft.

SCHEDULE OF RAILING STONES TO BE REPLACED



**RAILING DETAILS
VACHEL LINDSAY BRIDGE REHABILITATION
LONG BAY DRIVE OVER LAKE SPRINGFIELD
SPRINGFIELD, ILLINOIS**