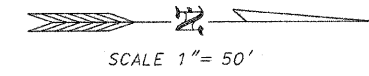


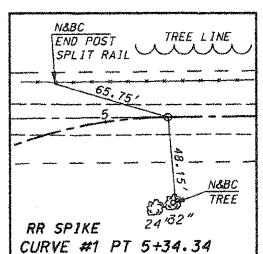
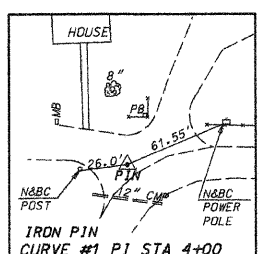
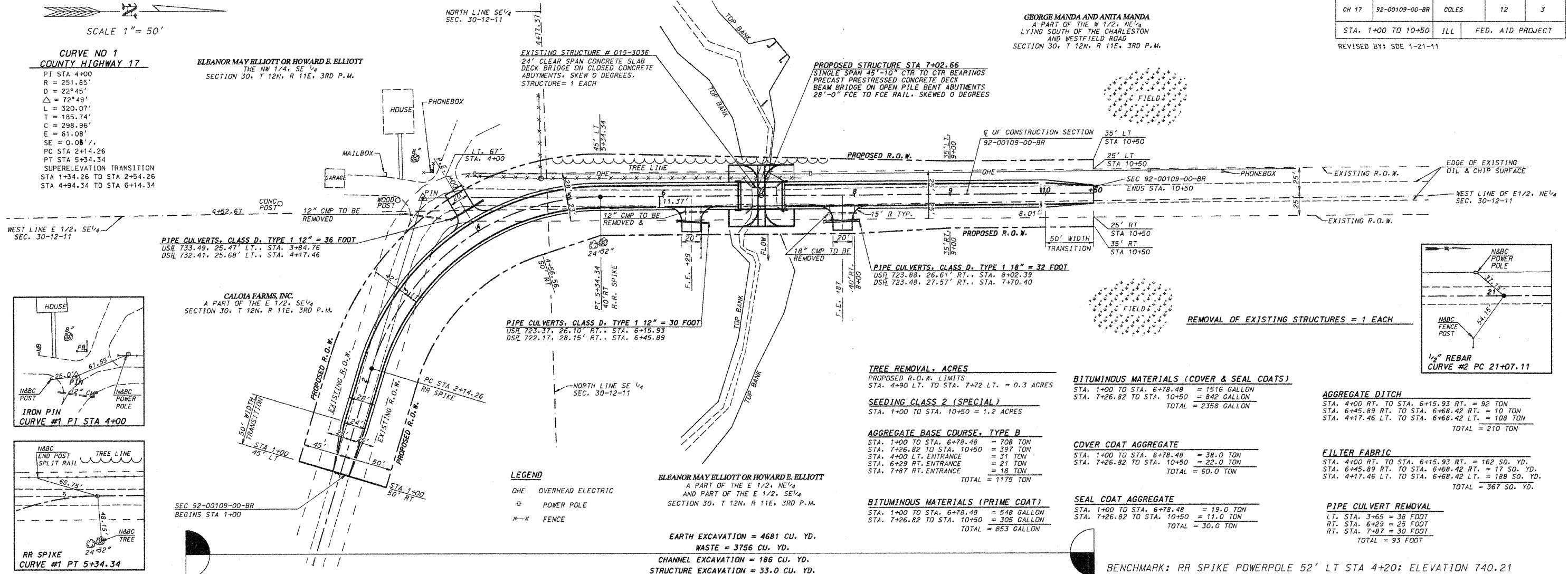
ROUTE #	SECTION	COUNTY	TOTAL	SHEET #
CH 17	92-00109-00-BR	COLES	12	3
STA. 1+00 TO 10+50			JLL	FED. AID PROJECT
REVISED BY: SDE 1-21-11				



**CURVE NO 1**  
**COUNTY HIGHWAY 17**  
 PI STA 4+00  
 R = 251.85'  
 D = 22°45'  
 Δ = 72°49'  
 L = 320.07'  
 T = 185.74'  
 E = 298.96'  
 SE = 0.08'  
 PC STA 2+14.26  
 PT STA 5+34.34  
 SUPERELEVATION TRANSITION  
 STA 1+34.26 TO STA 2+54.26  
 STA 4+94.34 TO STA 6+14.34

**ELEANOR MAY ELLIOTT OR HOWARD E. ELLIOTT**  
 THE NW 1/4, SE 1/4  
 SECTION 30, T 12N, R 11E, 3RD P.M.

**GEORGE MANDA AND ANITA MANDA**  
 A PART OF THE W 1/2, NE 1/4  
 LYING SOUTH OF THE CHARLESTON  
 AND WESTFIELD ROAD  
 SECTION 30, T 12N, R 11E, 3RD P.M.



**PIPE CULVERTS, CLASS D, TYPE 1 12" = 36 FOOT**  
 USE 733.49, 25.47' LT., STA. 3+84.76  
 DSR 732.41, 25.68' LT., STA. 4+17.46

**CALOIA FARMS, INC.**  
 A PART OF THE E 1/2, SE 1/4  
 SECTION 30, T 12N, R 11E, 3RD P.M.

**PIPE CULVERTS, CLASS D, TYPE 1 12" = 30 FOOT**  
 USR 723.37, 26.10' RT., STA. 6+15.93  
 DSR 722.17, 28.15' RT., STA. 6+45.89

**PROPOSED STRUCTURE STA 7+02.66**  
 SINGLE SPAN 45'-10" CTR TO CTR BEARINGS  
 PRECAST PRESTRESSED CONCRETE DECK  
 BEAM BRIDGE ON OPEN PILE BENT ABUTMENTS  
 28'-0" FCE TO FCE RAIL, SKEWED 0 DEGREES

**TREE REMOVAL, ACRES**  
 PROPOSED R.O.W. LIMITS  
 STA. 4+90 LT. TO STA. 7+72 LT. = 0.3 ACRES

**SEEDING CLASS 2 (SPECIAL)**  
 STA. 1+00 TO STA. 10+50 = 1.2 ACRES

**AGGREGATE BASE COURSE, TYPE B**  
 STA. 1+00 TO STA. 6+78.48 = 708 TON  
 STA. 7+26.82 TO STA. 10+50 = 397 TON  
 STA. 4+00 LT. ENTRANCE = 31 TON  
 STA. 6+29 RT. ENTRANCE = 21 TON  
 STA. 7+87 RT. ENTRANCE = 18 TON  
 TOTAL = 1175 TON

**BITUMINOUS MATERIALS (PRIME COAT)**  
 STA. 1+00 TO STA. 6+78.48 = 548 GALLON  
 STA. 7+26.82 TO STA. 10+50 = 305 GALLON  
 TOTAL = 853 GALLON

**BITUMINOUS MATERIALS (COVER & SEAL COATS)**  
 STA. 1+00 TO STA. 6+78.48 = 1516 GALLON  
 STA. 7+26.82 TO STA. 10+50 = 842 GALLON  
 TOTAL = 2358 GALLON

**COVER COAT AGGREGATE**  
 STA. 1+00 TO STA. 6+78.48 = 38.0 TON  
 STA. 7+26.82 TO STA. 10+50 = 22.0 TON  
 TOTAL = 60.0 TON

**SEAL COAT AGGREGATE**  
 STA. 1+00 TO STA. 6+78.48 = 19.0 TON  
 STA. 7+26.82 TO STA. 10+50 = 11.0 TON  
 TOTAL = 30.0 TON

**AGGREGATE DITCH**  
 STA. 4+00 RT. TO STA. 6+15.93 RT. = 92 TON  
 STA. 6+45.89 RT. TO STA. 6+68.42 RT. = 10 TON  
 STA. 4+17.46 LT. TO STA. 6+68.42 LT. = 108 TON  
 TOTAL = 210 TON

**FILTER FABRIC**  
 STA. 4+00 RT. TO STA. 6+15.93 RT. = 162 SQ. YD.  
 STA. 6+45.89 RT. TO STA. 6+68.42 RT. = 17 SQ. YD.  
 STA. 4+17.46 LT. TO STA. 6+68.42 LT. = 188 SQ. YD.  
 TOTAL = 367 SQ. YD.

**PIPE CULVERT REMOVAL**  
 LT. STA. 3+65 = 36 FOOT  
 RT. STA. 6+29 = 25 FOOT  
 RT. STA. 7+87 = 30 FOOT  
 TOTAL = 93 FOOT

**LEGEND**  
 OHE OVERHEAD ELECTRIC  
 □ POWER POLE  
 - - - FENCE

**ELEANOR MAY ELLIOTT OR HOWARD E. ELLIOTT**  
 A PART OF THE E 1/2, NE 1/4  
 AND PART OF THE E 1/2, SE 1/4  
 SECTION 30, T 12N, R 11E, 3RD P.M.

**EARTH EXCAVATION = 4681 CU. YD.**  
**WASTE = 3756 CU. YD.**  
**CHANNEL EXCAVATION = 186 CU. YD.**  
**STRUCTURE EXCAVATION = 33.0 CU. YD.**

**BENCHMARK: RR SPIKE POWERPOLE 52' LT STA 4+20; ELEVATION 740.21**

